

Exhibit O.

Neame Industrial Site Electrical Transmission Infrastructure



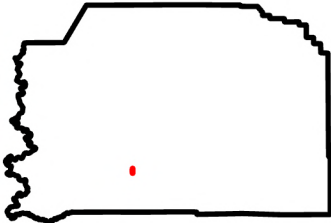
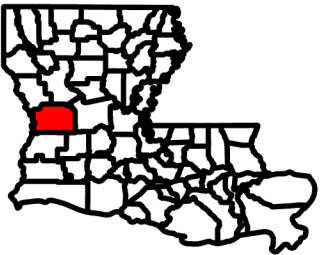
LOUISIANA CENTRAL
Industry & Entrepreneurship



Neame Industrial Site Electrical Transmission Infrastructure Map

Site Exhibit for
Neame Industrial Site
Vernon Parish, LA

Louisiana
Central

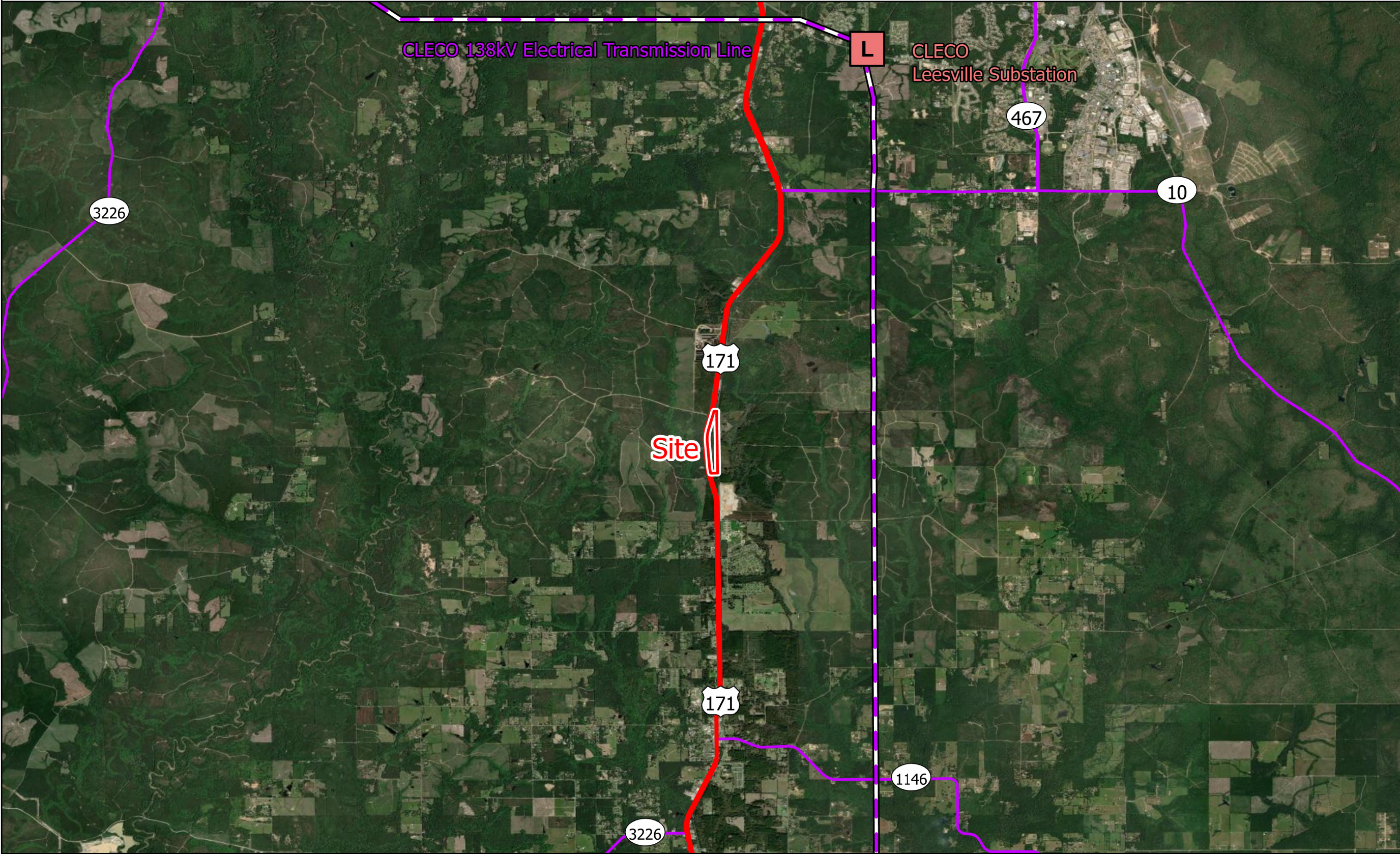


Legend

- Site Boundary (±50.49 Ac.)
- CLECO Leesville Substation
- CLECO 138 kV Electrical Transmission Line
- Major Roads
 - US Highway
 - State Highway



Date: 8/11/2025
Project Number: 222270
Drawn By: CFO
Checked By: EEB



General Notes:
1. The information presented herein is for planning purposes only. Further detailed due diligence MUST be completed prior to making decisions regarding the site.
2. No attempt has been made by CSRS, Inc. to verify site boundary, title, actual legal ownership, deed restrictions, servitudes, easements, or other burdens on the property, other than that furnished by the client or his representative.
3. Transportation data from 2023 TIGER datasets via U.S. Census Bureau at <https://www.census.gov/geographies/mapping-files/time-series/geo/tiger-line-file.html>.
4. Aerial imagery is compiled from multiple different sources to create one cohesive image and may not reflect current ground condition.
5. Utility information from visual inspection and/or the individual utility operators. Exact field location has not been determined by survey.
6. Utility data was derived and digitized from information provided by CLECO



0 5,000 10,000
Feet

P:\222270\1 Central LA Site Certification Program\T02 - Neame Industrial