

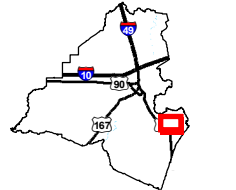
Exhibit Q. Girouard Site Local Product Pipelines Map



Girouard Site Local Product Pipelines Map

Girouard Site
Lafayette Parish, LA

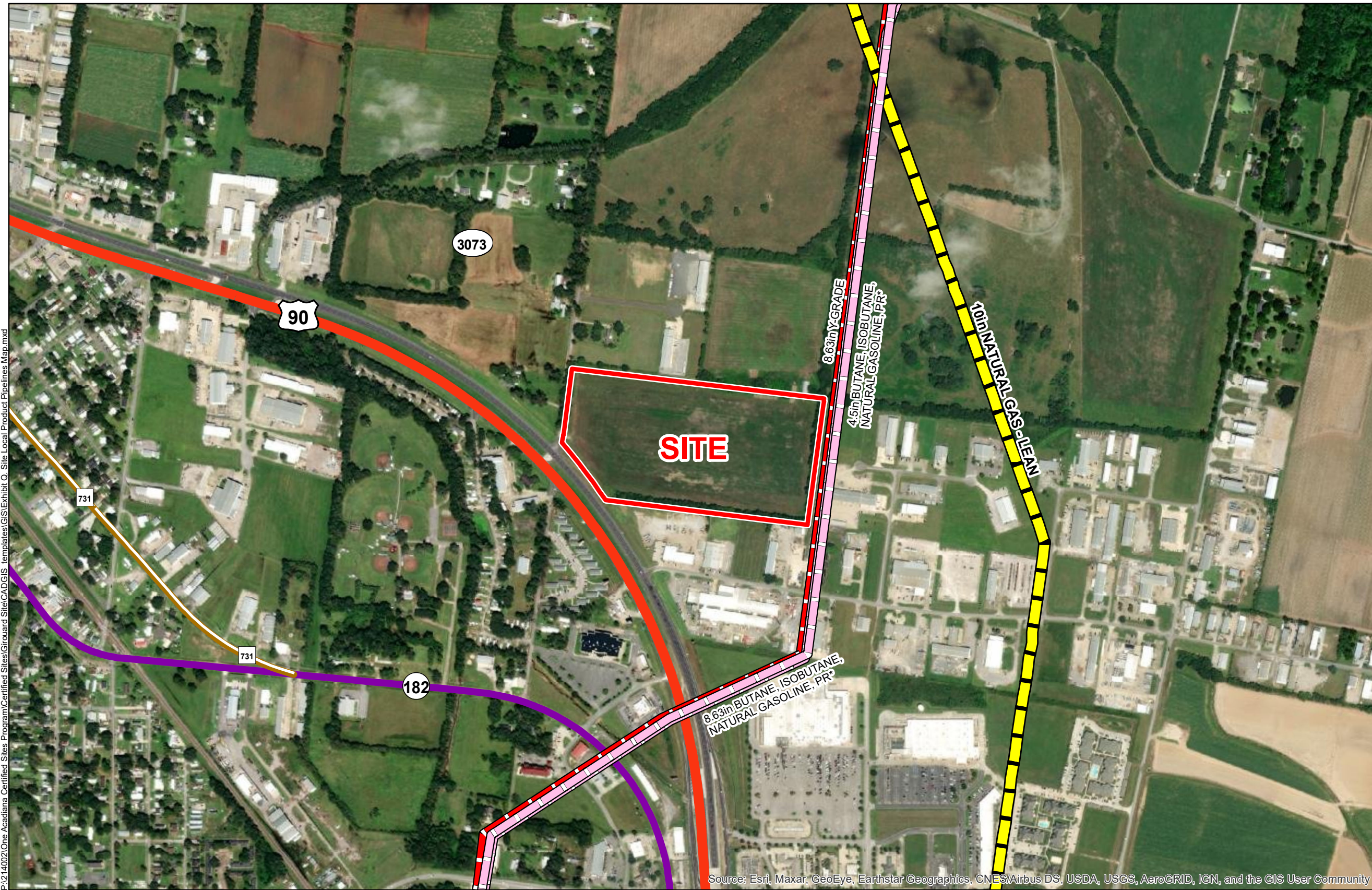
One Acadiana



Lafayette Parish

LEGEND

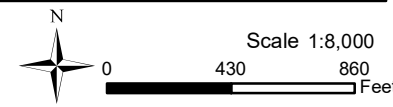
- Site Boundary (31.42 Ac.±)
- National Pipeline Mapping System Pipelines**
- PRODUCT SERVICE PIPELINE
- NATURAL GAS-LEAN
- Y-GRADE
- Existing Roadway**
- US Highway
- Urban State Highway
- Rural State Highway



P:\214002\One Acadiana Certified Sites Program\Certified Sites\Girouard Site\CAD\GIS templates\GIS\Exhibit Q - Site Local Product Pipelines Map.mxd

Source: Esri, Maxar, GeoEye, Earthstar Geographics, CNES/Airbus DS, USDA, USGS, AeroGRID, IGN, and the GIS User Community

- General Notes:
1. No attempt has been made by CSRS, Inc. to verify site boundary, title, actual legal ownership, deed restrictions, servitudes, easements, or other burdens on the property, other than that furnished by the client or his representative.
 2. Transportation data from 2013 TIGER datasets via U.S. Census Bureau at <ftp://ftp2.census.gov/geo/tiger/TIGER2013>.
 3. Pipeline information from IHS, Inc. and is current as of 09/2015. Product types in individual lines can vary and products represented here are current as of the publication of this exhibit, but may change depending on the demands and requirements of each system. Exact field location has not been determined by survey. The lines shown are an approximate representation only and may have been offset for depiction purposes.
 4. 2015 aerial imagery from USDA-APFO National Agricultural Inventory Project (NAIP) and may not reflect current ground conditions.



Date:	7/14/2021
Project Number:	214002
Drawn By:	SEW
Checked By:	EEB

