

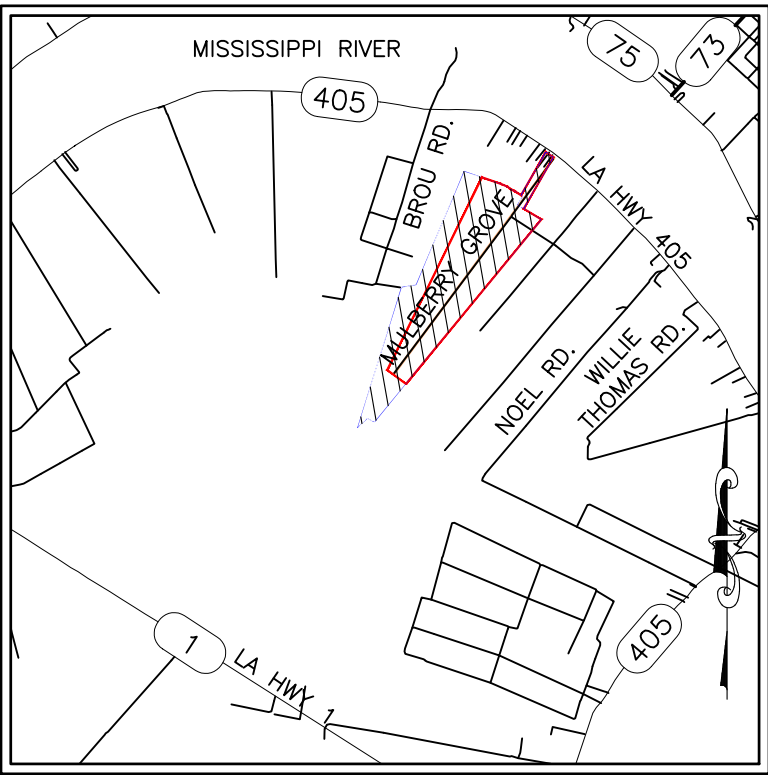
Exhibit C.

Germania Site

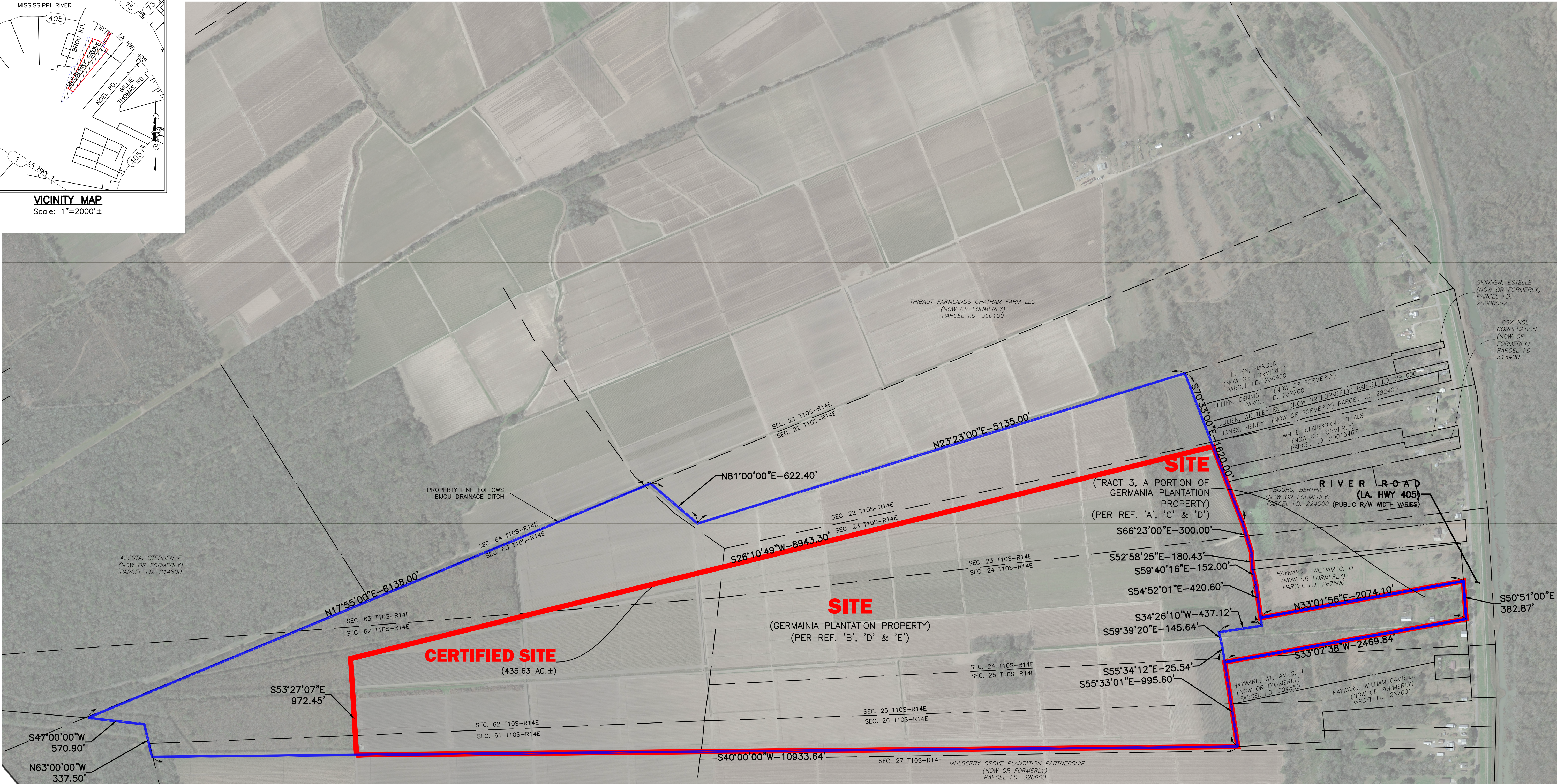
Property Boundary Aerial Exhibit



Germania Site Property Boundary Aerial Exhibit



VICINITY MAP
Scale: 1"=2000'±



LEGEND

— CERTIFIED SITE BOUNDARY (435.63 ACRES ±)

— PARENT SITE BOUNDARY (610 ACRES ±)

Revisions:

NO.	DESCRIPTION	DATE

CSRS

8555 United Plaza Blvd. Baton Rouge, LA 70809
Telephone: 225 769-0546 Fax: 225 767-0060
www.csrsinc.com

**PROPERTY BOUNDARY
AERIAL EXHIBIT**

OF
GERMANIA SITE

LOCATED IN
SECTIONS 22, 23, 24, 25, 26, 61, 62, 63 & 64
T-10-S R-14-E
SOUTHEASTERN LAND DISTRICT
WEST OF THE MISSISSIPPI RIVER

FOR
LED

Date:	FEBRUARY 27, 2023
Project Number:	212161
Drawn By:	dch
Checked By:	CBG
Sheet:	

- GENERAL NOTES:**
- PIPELINES ON THE FACE OF THIS MAP ARE SHOWN PER [HTTPS://PVNPM.PHMSA.DOT.GOV/](https://pvnpm.phmsa.dot.gov/) AND WERE NOT VERIFIED IN FIELD.
 - REFERENCE DOCUMENTS:
 - "MAP SHOWING BOUNDARY SURVEY OF FIVE (5) TRACTS OF LAND BEING A PORTION OF GERMANIA PLANTATION 'HELENE REUSS HAYWARD TESTAMENTARY TRUST'" BY WOODY T. TRICHE, P.L.S. DATED FEBRUARY 16, 2006. (COB:749162, PAGE 6 FILED 06/03/2010)
 - MAP SHOWING "NEW HOPE, ASCENSION, DELCIA, ARLINGTON PLANT'IONS..." BY FRANK H. WADDILL, CIVIL ENGINEER DATED JANUARY 17, 1940. (COB:14286, PAGE 1 FILED 10/29/1941) AND
 - "SURVEY OF THE FRONT PART OF GERMANIA PLT..." BY T.J. WEISHAUP, DATED MARCH 1962 (COB:77467, PAGE 1, FILED 12/31/1964).
 - CASH SALE FOR WILLIAM C. HAYWARD, III REFERENCING MAP BY FRANK H. WADDILL, CIVIL ENGINEER DATED JANUARY 17, 1940. (COB:14286, PAGE 1 FILED 10/29/1941) AND MAP BY T.J. WEISHAUP, DATED MARCH 1962 (COB:77467, PAGE 1, FILED 12/31/1964).
 - DEED OF "EXHIBIT C" SHOWING "A PART OF THE GERMANIA PLANTATION BEING APPROXIMATELY 600 ACRES OF WHICH APPROXIMATELY 400 ACRES OF WHICH IS CULTIVATABLE" AS SHOWN ON THE WADDILL MAP DATED JANUARY 17, 1940. (COB: 667297; PAGE 5 FILED: 05/07/2007)
 - "DRAINAGE SERVITUDE GRANT SHOWING A 15' TB SERVITUDE WITH EXISTING DITCH WITHIN ALONG THE NORTHEAST BOUNDARY OF A 610.51 ACRE TRACT OF LAND" "ALSO A 15' TB SERVITUDE ON A SOUTHWEST BOUNDARY OF A 21.31 ACRE TRACT OF LAND BEING TRACT 3..." SIGNED OCTOBER 03, 2019. (COB: 980696; PAGE 1 FILED: 10/17/2019)
 - NO ATTEMPT HAS BEEN MADE BY CSRS, INC. TO VERIFY TITLE, ACTUAL LEGAL OWNERSHIP, DEED RESTRICTIONS, SERVITUDES, EASEMENTS, OR OTHER BURDENS ON THE PROPERTY, OTHER THAN THAT FURNISHED BY THE CLIENT OR HIS REPRESENTATIVE.
 - THIS IS NOT A PROPERTY BOUNDARY SURVEY AND IS NOT INTENDED TO MEET THE LOUISIANA STANDARDS OF PRACTICE FOR PROPERTY BOUNDARY SURVEYS. BEARINGS AND DISTANCES OF TRACTS WERE OBTAINED FROM DOCUMENT REFERENCED ABOVE.
 - THE COORDINATE SYSTEM USED IS NAD83 LOUISIANA STATE PLANE SOUTH (US SURVEY FEET). COORDINATES WERE DERIVED BY OVERLAYING THE BOUNDARY ON AN AERIAL PHOTOGRAPH AND ARE WITHIN 100' OF TRUE LOCATION.
 - RIGHTS OF WAY, EASEMENTS, AND SERVITUDES SHOWN HEREON HAVE NOT BEEN VERIFIED IN THE FIELD AND ANY SHOWN ARE FOR GENERAL LOCATIVE INFORMATION ONLY.