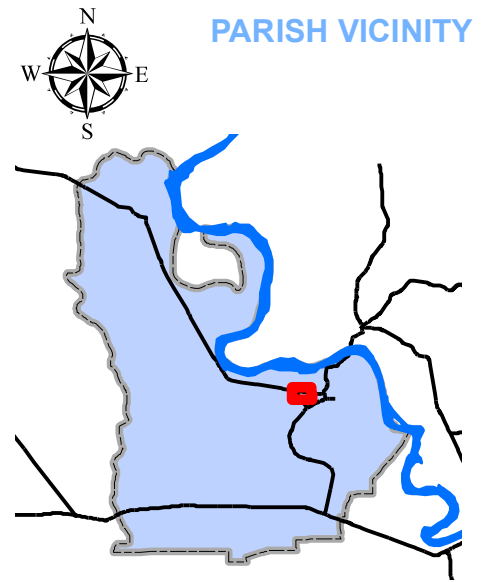


Exhibit L. New Roads Industrial Park Electricity Infrastructure Upgrade Plan Map



Legend

- PCP Electric
 - NEW 640 Feet 3 Phase Extension
 - Old-Existing 3 Phase Line
- Poydras Site
- School
- Church
- Truck Route
- Parish Boundary

CONFIDENTIAL

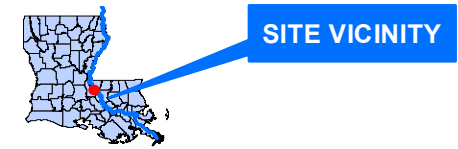
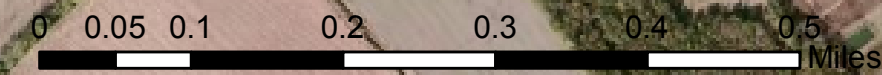
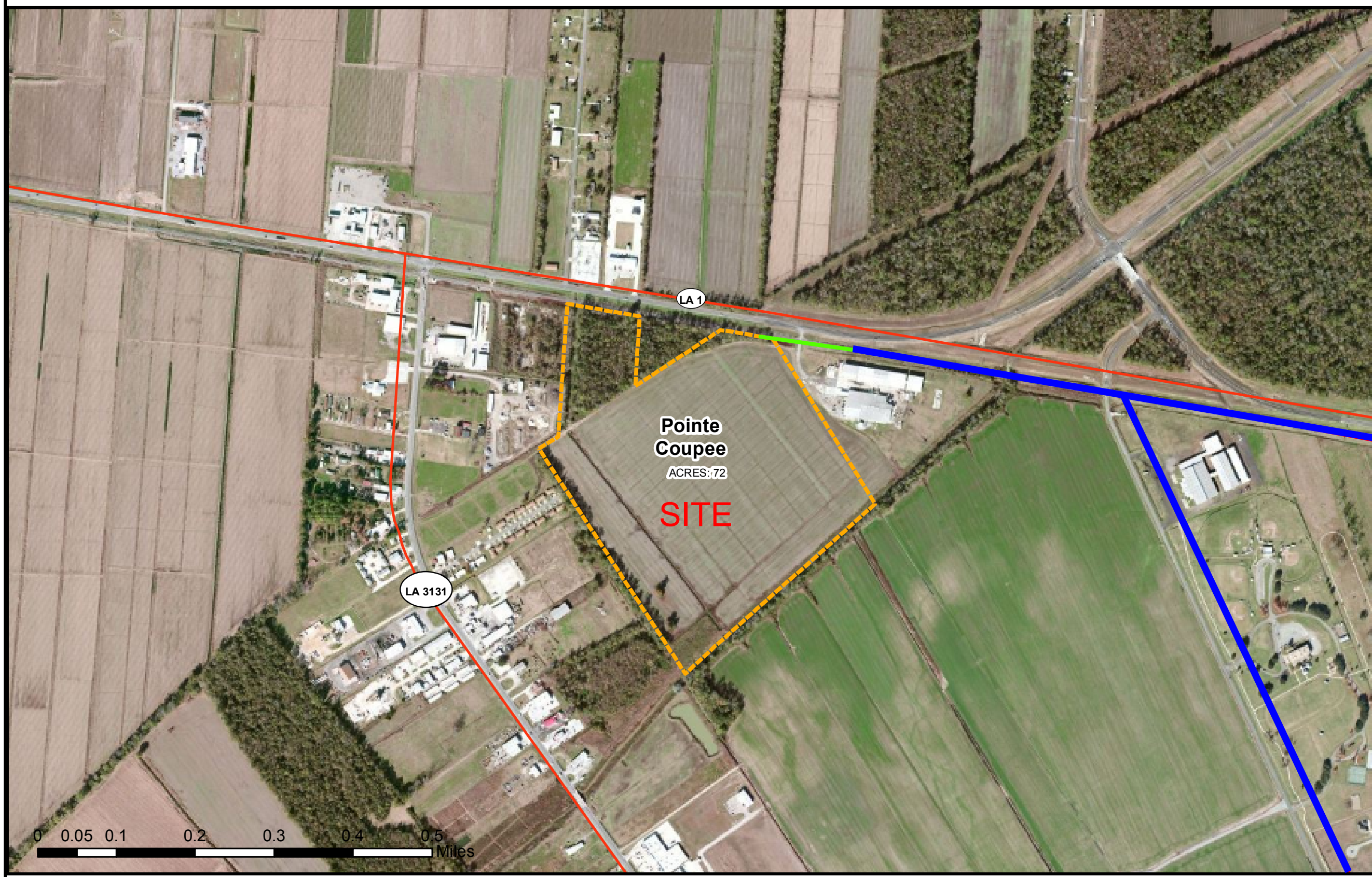
Source
 Parcel data supplied by Pointe Coupee Assessor.
 Parcel acreage values approximated.
 GIS features acquired from public domain state and federal data sources (GNIS, LOSCO, US Census Bureau).

Title
POINTE COUPEE PARISH
NEW ROADS
INDUSTRIAL PARK

Project

GIS Analyst	WBM	Date	9/13/12
LEO Project No.	12-003	Map No.	Version
			001

LEO, LLC
 17170 Perkins Road
 Baton Rouge, Louisiana 70810
 (225) 281-4202



SITE PROFILE: New Roads Industrial Park
Acres: 72