

# Exhibit W. Jamestown Business Park Soils Conservation Service Map



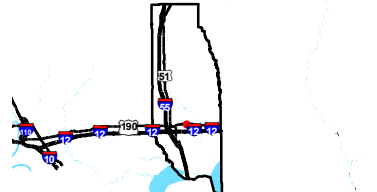
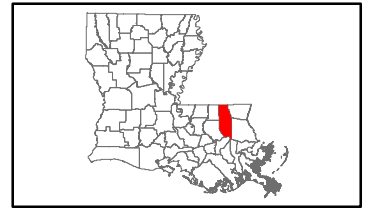
**GREATER NEW ORLEANS**  
INC  
REGIONAL ECONOMIC DEVELOPMENT



# Jamestown Business Park Soils Conservation Service Map

Jamestown Business Park  
Tangipahoa Parish, LA

GNO



Tangipahoa Parish

### LEGEND

Site Boundary (71.46 Ac.±)

### Soil Type

Aa - Abita silt loam, 0 to 2 percent slopes (6% hydric)

Ch - Cahaba fine sandy loam, 3 to 6 percent slopes

Go - Guyton silt loam, 0 to 1 percent slopes, rarely flooded (94% hydric)

Gy - Guyton silt loam, 0 to 1 percent slopes, occasionally flooded (91% hydric)

Mt - Myatt fine sandy loam (80% hydric)

St - Stough fine sandy loam, 0 to 1 percent slopes (10% hydric)

### Existing Roadway

US Highway

Local Roads

Stream



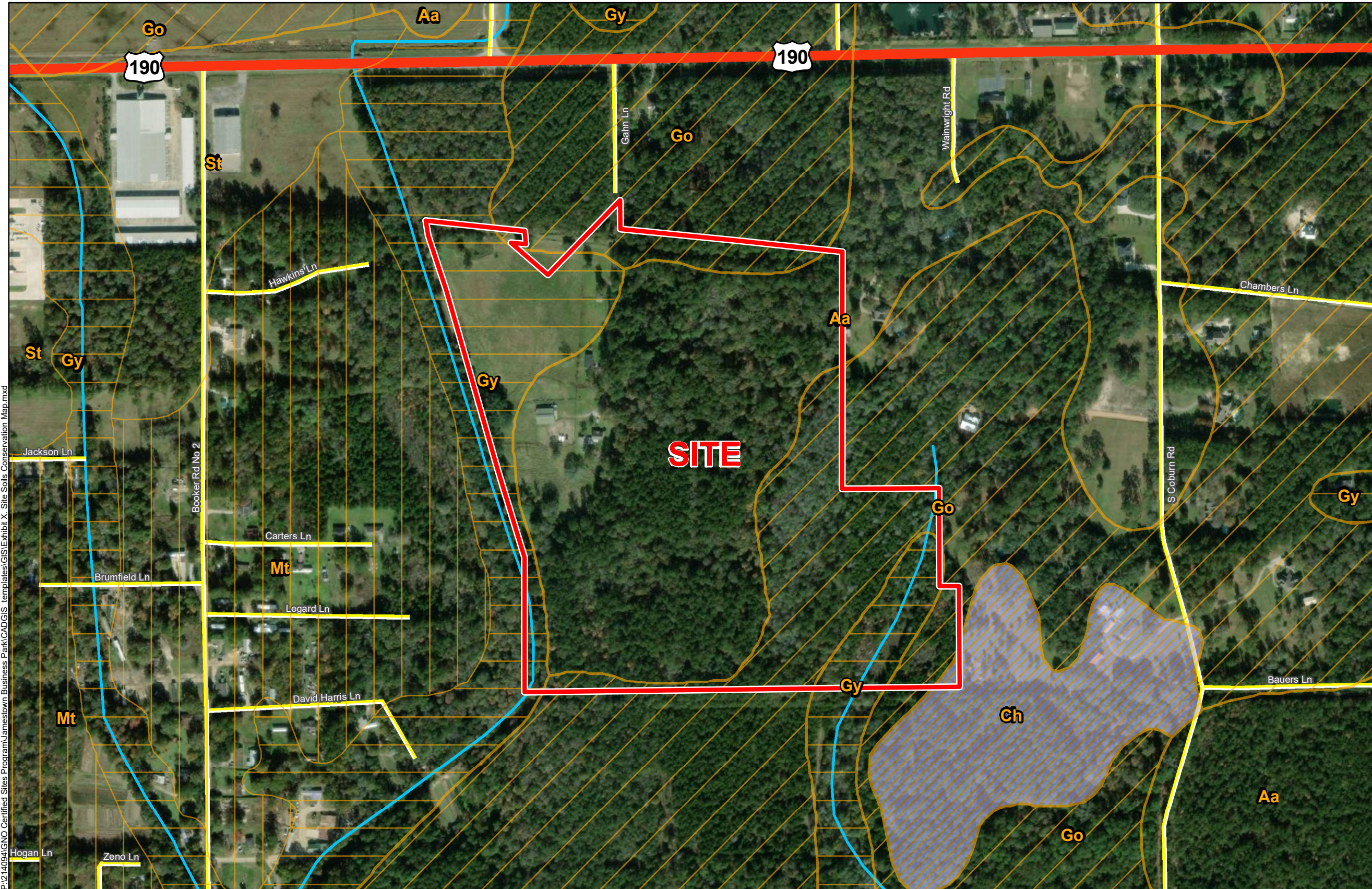
Date: 10/1/2021

Project Number: 214094

Drawn By: SEW

Checked By: EEB

P:\214094\GNO Certified Sites Program\Jamestown Business Park\CAD\GIS templates\GIS\Exhibit X\_Site Soils Conservation Map.mxd



General Notes:  
 1. No attempt has been made by CSRS, Inc. to verify site boundary, title, actual legal ownership, deed restrictions, servitudes, easements, or other burdens on the property, other than that furnished by the client or his representative.  
 2. Transportation data from 2013 TIGER datasets via U.S. Census Bureau at <ftp://ftp2.census.gov/geo/tiger/TIGER2013>.  
 3. 2015 aerial imagery from USDA-APFO National Agricultural Inventory Project (NAIP) and may not reflect current ground conditions.  
 4. Soils data from USDA SSURGO website: <http://websoilsurvey.sc.egov.usda.gov/App/WebSoilSurvey.aspx>.

