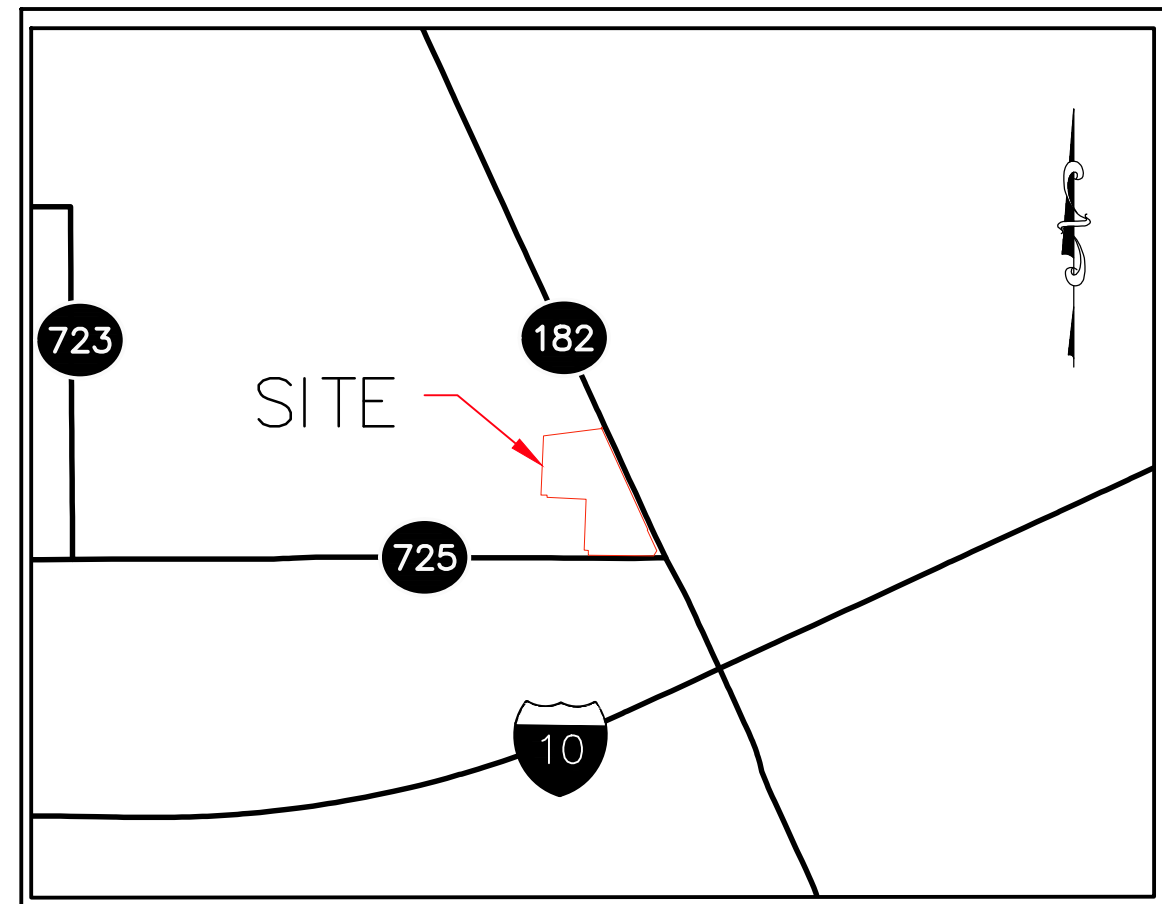


Exhibit G. Hero's Point Site Property Boundary Aerial Exhibit



Hero's Point Site Property Boundary Aerial Exhibit



VICINITY MAP
 SCALE: 1"=2000'

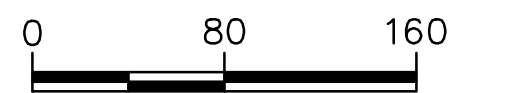
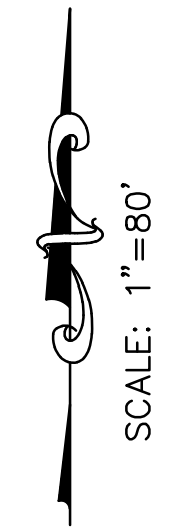


Project:

Hero's Point Site
Lafayette Parish

Client:

One Acadiana



Revisions:

#	Date	Description

Key Plan:

LEGEND

— SITE BOUNDARY (21.10 AC. ±)

Sheet Title:
Property Boundary
Aerial Exhibit

Date:	September 2018
Project Number:	214002
Drawn By:	DWC
Checked By:	TMK
Sheet:	

P:\214002\One Acadiana Certified Sites Program\Certified Sites\Hero's Point Site (North University Site)\CADGIS_templates\CAD_Survey.dwg Nov 13, 2018 - 9:33am

GENERAL NOTES:

- No attempt has been made by CSRS, Inc. to verify title, actual legal ownership, deed restrictions, servitudes, easements, or other burdens on the property, other than that furnished by the client or his representative.
- Depicted exhibit based on legal description as filed in the Lafayette Parish Clerk of Courts.
- This is not a property boundary survey and is not intended to meet the Louisiana standards of practice for property boundary surveys. Bearings and distances of tracts were obtained from document referenced above.
- The coordinate system used is NAD83 Louisiana State Plane South (US feet). Coordinates were derived by overlaying the boundary on an aerial photograph and are within 100' of true location.
- Rights of Way, Easements, and Servitudes shown hereon have not been verified in the field and any shown are for general locative information only.