

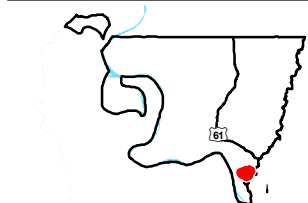
Exhibit R. West Feliciana Industrial Park
Site Roadway Transportation Infrastructure
Wide Map



West Feliciana Industrial Park Site Roadway Transportation Infrastructure Wide Map

West Feliciana Industrial Park Site
West Feliciana Parish, LA

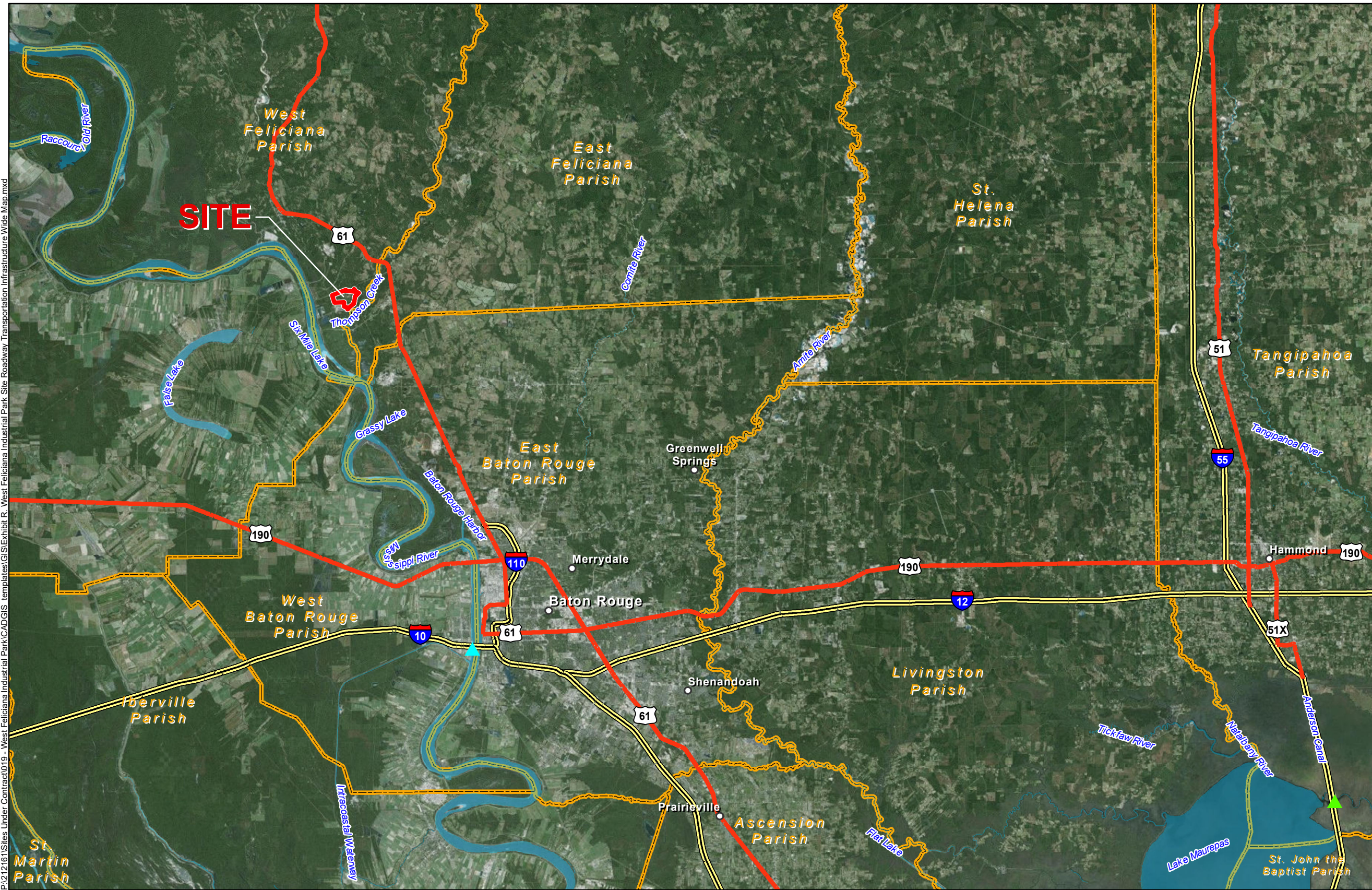
BRAC



West Feliciana Parish

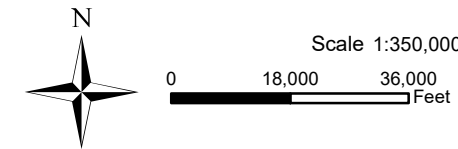
LEGEND

- Site Boundary (547.31 Ac.)
- ▲ Deep Draft Port
- ▲ Shallow Draft Port
- Existing Roadway**
- Interstate
- US Highway
- Waterbody
- Parish Boundary



P:\212161\Sites Under Contract\019 - West Feliciana Industrial Park\CAD\GIS templates\GIS\Exhibit R - West Feliciana Industrial Park Site Roadway Transportation Infrastructure Wide Map.mxd

General Notes:
 1. No attempt has been made by CSRS, Inc. to verify site boundary, title, actual legal ownership, deed restrictions, servitudes, easements, or other burdens on the property, other than that furnished by the client or his representative.
 2. Transportation data from 2013 TIGER datasets via U.S. Census Bureau at [ftp://ftp2.census.gov/geo/tiger/TIGER2013](http://ftp2.census.gov/geo/tiger/TIGER2013).
 3. Aerial Imagery Credits: Source: Esri, DigitalGlobe, GeoEye, Earthstar Geographics, CNES/Airbus DS, USDA, USGS, AeroGRID, IGN, and the GIS User Community



Baton Rouge Area Chamber.

Date:	6/8/2017
Project Number:	212161
Drawn By:	TMK
Checked By:	JAY

CSRS
 IMAGINE SHAPE DELIVER

6767 Perkins Road Suite 200 Baton Rouge, LA 70808
 Telephone: 225 767-0546 Fax: 225 767-0060
www.csrsonline.com