

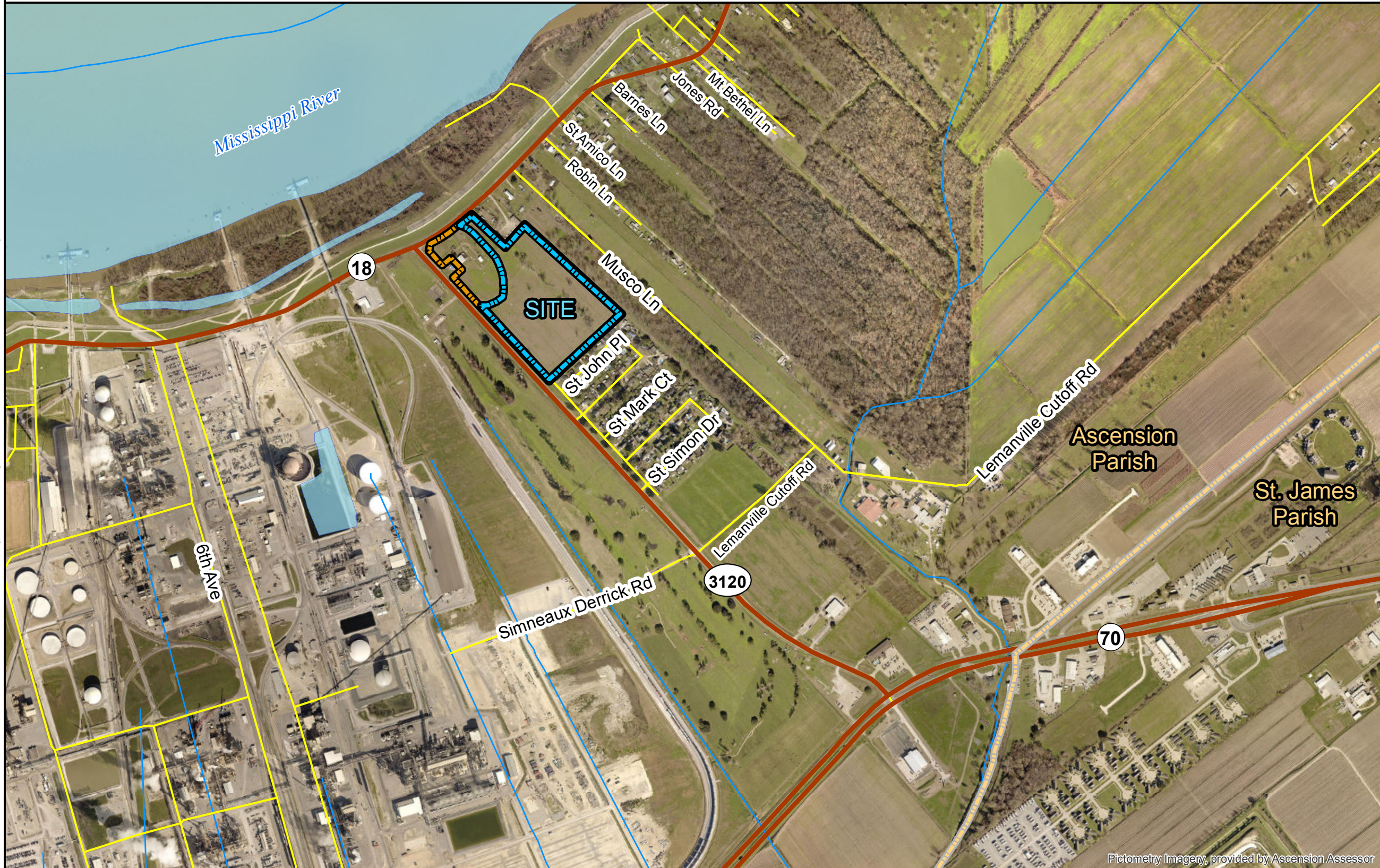
Exhibit M. Foti - Highway 18 Roadway Transportation  
Infrastructure Map





Document Path: R:\DWG\16-000\16-392\Foti Sites\Foti - Hwy 18\Map\Program Application Exhibits\Exhibit M - Roadway Transportation Infrastructure Map.mxd

# Foti - Highway 18 Roadway Transportation Infrastructure Map



## LEGEND

- Foti - Highway 18 (± 22.70 Ac.)
- LED Certified Site Area (± 17.73 Ac.)
- Parish Boundary
- Existing Roadway**
  - State Highway
  - Local Road
  - Streams
  - Water Bodies



SITE NAME: Foti - Highway 18

Drawn By: CDS

Checked By: GJB

Date: 6/4/2018

**General Notes:**  
1. The information presented herein was obtained from various resources and should be considered preliminary.  
2. No attempt has been made by Duplantis Design Group, PC to verify site boundary, title, actual legal ownership, deed restrictions, servitudes, easements, or other burdens on the property.

**References:**  
1. 2017 Aerial imagery from Ascension Parish Assessors website  
2. Site boundary from Landsource, Inc.  
3. Transportation data from U.S. Census Bureau

