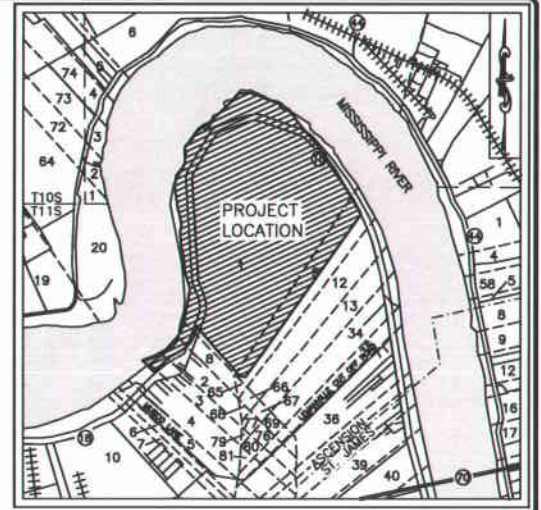


T 11 S - R 15 E
SECTIONS 1, 8, 9, 12, 65 & 66

Exhibit 7 Property Survey

- NOTES:**
- 1.) Zoning: Rural
 - 2.) Reference Maps:
A.) Survey map showing tract of land claimed by Pasquale Palermo, Situated in T11S, R15E, Ascension Parish, Louisiana.
Prepared By: Carl Heck Engineering, Inc. Dated: October 24, 1988
 - 3.) Basis of Bearing based on Louisiana State Plane Coordinate System NAD 83, South Zone, Survey Feet.
 - 4.) Flood Note: In accordance with FEMA Flood Insurance Rate Map Panel Number 220013 0115 B, dated September 2, 1981, for Ascension Parish, Louisiana, Panel Number 220013 0120 C, dated November 16, 1983 and Panel Number 2200130 0225 B, dated September 2, 1981; The property hereon is located in Flood Zone "C" (Areas of minimal flooding).
 - 5.) Acadia Land Surveying, L.L.C. made no attempt to locate visible or buried utilities as part of this survey.
 - 6.) No attempt has been made by Acadia Land Surveying, L.L.C. to verify title, actual legal ownership, dead restrictions servitudes, easements, ways, right-of-way or other burdens on the property, other than that furnished by the client or his representative. There is no representation that all applicable servitudes and restrictions are shown hereon. The surveyor has made no title search or public record search in compiling the data for this survey.
 - 7.) Acadia Land Surveying, L.L.C. has not and does not provide Delineation of Jurisdictional Wetlands.
 - 8.) The words "Certify," "Certifies" or "Certification" as used herein is understood to be an expression of professional opinion by the surveyor, based upon his best knowledge, information, and belief, as such, it does not constitute a guarantee nor a warranty, expressed or implied.



VICINITY MAP
SCALE 1" = 3000'

LEGAL DESCRIPTION - OVERALL:

A certain parcel or tract of ground containing 987.54 acres or 43,017,120 square feet, located in Sections 1, 8, 9, 12, 65 & 66, Township 11 South, Range 15 East, Ascension Parish, Louisiana and being more particularly described as follows:

Commencing at the intersection of the southerly property line of the 987.54 acre tract and the westerly right of way line of Louisiana State Highway No. 18, said point being the "POINT OF BEGINNING" and labeled "P.O.B.,"

Then, continuing along said right of way line, South 21 degrees 22 minutes 50 seconds West a distance of 362.76 feet to a point;

Then, departing said right of way line, South 28 degrees 05 minutes 08 seconds West a distance of 214.08 feet to a point;

Then, South 45 degrees 06 minutes 15 seconds West a distance of 213.78 feet to a point;

Then, South 50 degrees 41 minutes 59 seconds West a distance of 46.99 feet to a point;

Then, South 53 degrees 24 minutes 28 seconds West a distance of 109.83 feet to a point;

Then, South 56 degrees 18 minutes 32 seconds West a distance of 145.32 feet to a point;

Then, South 60 degrees 00 minutes 32 seconds West a distance of 206.54 feet to a point;

Then, South 60 degrees 47 minutes 38 seconds West a distance of 170.30 feet to a point;

Then, South 51 degrees 01 minutes 18 seconds West a distance of 44.84 feet to a point;

Then, South 48 degrees 01 minutes 39 seconds West a distance of 180.44 feet to a point;

Then, South 48 degrees 51 minutes 02 seconds West a distance of 581.08 feet to a point;

Then, North 48 degrees 30 minutes 02 seconds East a distance of 618.38 feet to a point, said point being located along the westerly edge of the Mississippi River;

Then, continuing along said westerly edge, North 51 degrees 57 minutes 06 seconds East a distance of 204.69 feet to a point;

Then, North 72 degrees 18 minutes 46 seconds East a distance of 75.22 feet to a point;

Then, North 71 degrees 22 minutes 41 seconds East a distance of 146.71 feet to a point;

Then, North 41 degrees 34 minutes 20 seconds East a distance of 217.28 feet to a point;

Then, North 42 degrees 12 minutes 01 seconds East a distance of 376.30 feet to a point;

Then, North 42 degrees 08 minutes 28 seconds East a distance of 329.58 feet to a point;

Then, North 15 degrees 12 minutes 43 seconds East a distance of 382.58 feet to a point;

Then, North 12 degrees 00 minutes 18 seconds East a distance of 566.21 feet to a point;

Then, North 08 degrees 08 minutes 08 seconds East a distance of 522.99 feet to a point;

Then, North 21 degrees 48 minutes 47 seconds West a distance of 106.33 feet to a point;

Then, North 18 degrees 37 minutes 30 seconds West a distance of 482.00 feet to a point;

Then, North 04 degrees 36 minutes 28 seconds West a distance of 365.62 feet to a point;

Then, North 07 degrees 07 minutes 48 seconds West a distance of 212.38 feet to a point;

Then, North 12 degrees 28 minutes 20 seconds West a distance of 305.85 feet to a point;

Then, North 06 degrees 25 minutes 30 seconds West a distance of 525.47 feet to a point;

Then, North 10 degrees 57 minutes 35 seconds West a distance of 277.28 feet to a point;

Then, North 08 degrees 18 minutes 14 seconds West a distance of 292.99 feet to a point;

Then, North 15 degrees 05 minutes 08 seconds West a distance of 566.19 feet to a point;

Then, North 08 degrees 47 minutes 04 seconds West a distance of 292.99 feet to a point;

Then, North 02 degrees 36 minutes 25 seconds West a distance of 227.81 feet to a point;

Then, North 06 degrees 46 minutes 53 seconds East a distance of 105.30 feet to a point;

Then, North 08 degrees 42 minutes 44 seconds East a distance of 156.68 feet to a point;

Then, North 08 degrees 37 minutes 28 seconds East a distance of 161.07 feet to a point;

Then, North 22 degrees 44 minutes 10 seconds East a distance of 181.07 feet to a point;

Then, North 01 degrees 28 minutes 04 seconds East a distance of 515.32 feet to a point;

Then, North 35 degrees 08 minutes 58 seconds East a distance of 229.78 feet to a point;

Then, North 43 degrees 08 minutes 08 seconds East a distance of 482.87 feet to a point;

Then, North 51 degrees 13 minutes 09 seconds East a distance of 482.87 feet to a point;

Then, North 42 degrees 01 minutes 23 seconds East a distance of 111.98 feet to a point;

Then, North 48 degrees 41 minutes 02 seconds East a distance of 373.51 feet to a point;

Then, North 45 degrees 22 minutes 01 seconds East a distance of 560.83 feet to a point;

Then, North 39 degrees 37 minutes 33 seconds East a distance of 182.98 feet to a point;

Then, North 87 degrees 10 minutes 40 seconds East a distance of 105.70 feet to a point;

Then, North 88 degrees 43 minutes 28 seconds East a distance of 230.80 feet to a point;

Then, North 90 degrees 00 minutes 00 seconds East a distance of 148.70 feet to a point;

Then, South 73 degrees 31 minutes 53 seconds East a distance of 376.83 feet to a point;

Then, South 84 degrees 01 minutes 53 seconds East a distance of 271.83 feet to a point;

Then, South 88 degrees 40 minutes 10 seconds East a distance of 271.83 feet to a point;

Then, South 87 degrees 27 minutes 53 seconds East a distance of 217.45 feet to a point;

Then, South 80 degrees 49 minutes 54 seconds East a distance of 228.89 feet to a point;

Then, South 58 degrees 31 minutes 55 seconds East a distance of 152.45 feet to a point;

Then, South 41 degrees 37 minutes 29 seconds East a distance of 181.65 feet to a point;

Then, South 35 degrees 24 minutes 57 seconds East a distance of 458.13 feet to a point;

Then, South 39 degrees 43 minutes 00 seconds East a distance of 884.85 feet to a point;

Then, South 37 degrees 18 minutes 46 seconds East a distance of 1,210.84 feet to a point;

Then, South 29 degrees 50 minutes 01 seconds East a distance of 881.42 feet to a point;

Then, South 33 degrees 28 minutes 12 seconds East a distance of 518.44 feet to a point;

Then, South 27 degrees 56 minutes 06 seconds East a distance of 683.28 feet to a point;

Then, departing the westerly edge of the Mississippi River, South 35 degrees 11 minutes 11 seconds West a distance of 7,145.08 feet to a point;

Then, North 76 degrees 40 minutes 20 seconds West a distance of 212.83 feet to a point;

Then, North 40 degrees 37 minutes 47 seconds West a distance of 453.28 feet to a point;

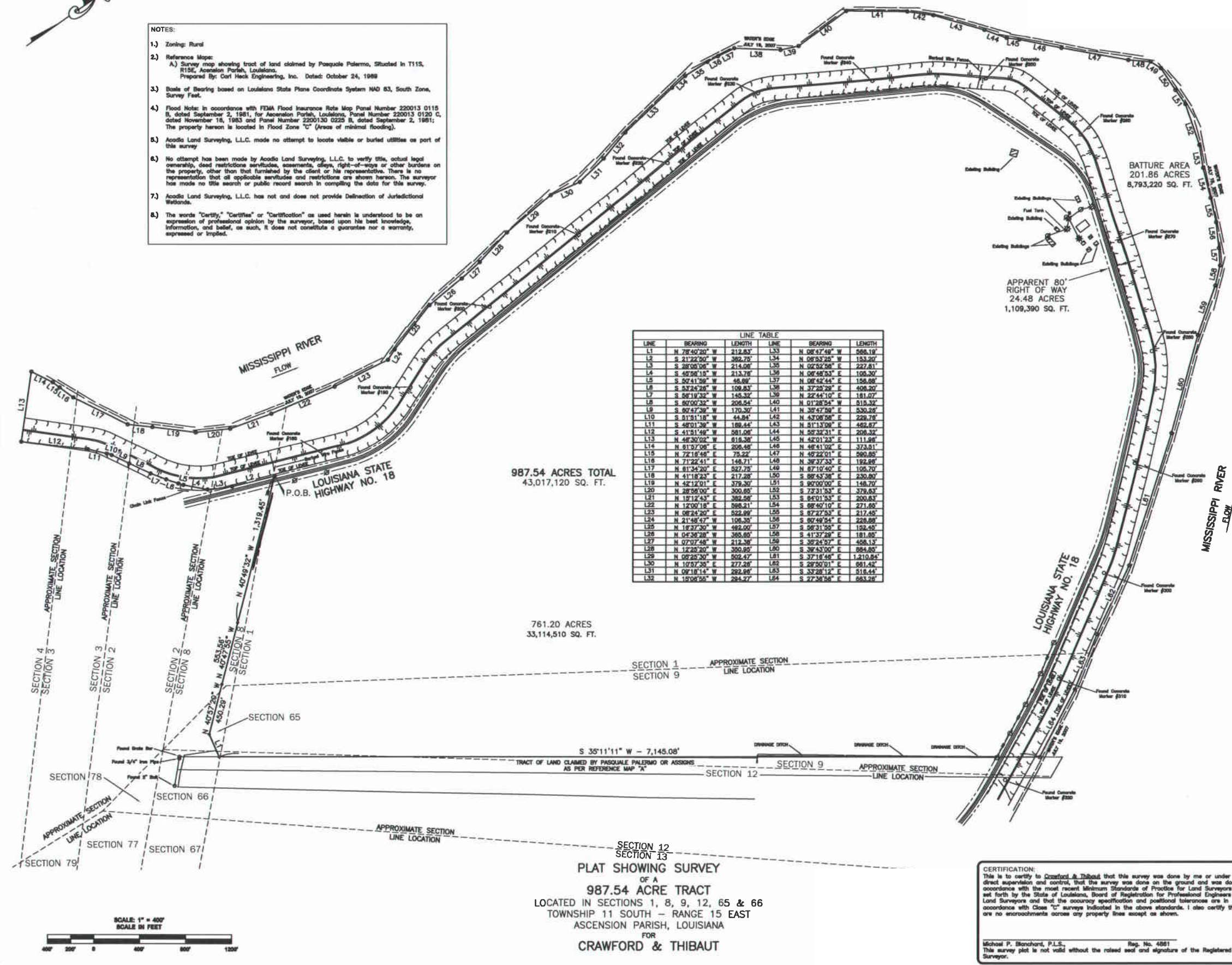
Then, North 40 degrees 47 minutes 55 seconds West a distance of 553.58 feet to a point;

Then, North 40 degrees 49 minutes 32 seconds West a distance of 1,319.45 feet to the "POINT OF BEGINNING."

LINE	BEARING	LENGTH	LINE	BEARING	LENGTH
L1	N 78°40'20" W	212.83	L33	N 08°47'48" W	566.19
L2	S 21°22'50" W	382.76	L34	N 08°53'26" W	183.20
L3	S 28°06'08" W	214.08	L35	N 02°52'56" E	227.81
L4	S 48°58'15" W	213.78	L36	N 08°48'53" E	105.30
L5	S 53°24'28" W	145.32	L37	N 08°42'44" E	108.80
L6	S 57°24'28" W	109.83	L38	N 37°25'29" E	406.20
L7	S 58°18'32" W	145.32	L39	N 22°44'10" E	181.07
L8	S 60°00'32" W	206.54	L40	N 01°28'54" W	515.32
L9	S 60°47'39" W	170.30	L41	N 39°47'29" E	520.82
L10	S 61°51'18" W	44.84	L42	N 53°08'56" E	229.78
L11	S 48°01'28" W	180.44	L43	N 51°13'06" E	462.67
L12	S 41°51'48" W	581.08	L44	N 59°32'31" E	208.32
L13	N 48°30'02" E	619.38	L45	N 42°01'23" E	111.88
L14	N 51°37'06" E	808.48	L46	N 48°41'59" E	373.51
L15	N 72°18'46" E	75.22	L47	N 49°22'01" E	260.82
L16	N 71°24'41" E	146.71	L48	N 39°37'33" E	192.89
L17	N 61°34'20" E	527.28	L49	N 67°10'40" E	105.70
L18	N 41°18'23" E	217.28	L50	S 88°43'38" E	230.80
L19	N 42°12'01" E	376.30	L51	S 90°00'00" E	148.70
L20	N 28°38'00" E	309.85	L52	S 72°31'52" E	378.63
L21	N 18°12'43" E	385.62	L53	S 84°01'53" E	200.83
L22	N 12°00'18" E	568.21	L54	S 66°40'10" E	271.83
L23	N 08°24'20" E	522.99	L55	S 87°27'53" E	217.45
L24	N 21°48'47" E	105.30	L56	S 80°49'24" E	228.89
L25	N 18°37'30" E	482.00	L57	S 58°21'50" E	152.45
L26	N 04°36'28" W	365.62	L58	S 41°37'28" E	181.07
L27	N 07°07'48" W	212.38	L59	S 39°24'57" E	458.13
L28	N 12°20'20" W	305.85	L60	S 39°43'00" E	684.85
L29	N 08°28'30" W	502.47	L61	S 37°18'48" E	1,210.84
L30	N 10°57'36" W	772.28	L62	S 29°50'21" E	881.42
L31	N 09°18'14" W	282.89	L63	S 33°28'12" E	518.44
L32	N 10°08'56" W	284.27	L64	S 27°38'56" E	683.28

987.54 ACRES TOTAL
43,017,120 SQ. FT.

761.20 ACRES
33,114,510 SQ. FT.



PLAT SHOWING SURVEY
OF A
987.54 ACRE TRACT
LOCATED IN SECTIONS 1, 8, 9, 12, 65 & 66
TOWNSHIP 11 SOUTH - RANGE 15 EAST
ASCENSION PARISH, LOUISIANA
FOR
CRAWFORD & THIBAUT

CERTIFICATION:
This is to certify to Crawford & Thibaut that this survey was done by me or under my direct supervision and control, that the survey was done on the ground and was done in accordance with the most recent Minimum Standards of Practice for Land Surveyors as set forth by the State of Louisiana, Board of Registration for Professional Engineers and Land Surveyors and that the accuracy specification and positional tolerances are in accordance with Class "C" surveys indicated in the above standards. I also certify there are no encroachments across any property lines except as shown.

Michael P. Blanchard, P.L.S.
This survey plat is not valid without the raised seal and signature of the Registered Land Surveyor.
Reg. No. 4861

ACADIA

LAND SURVEYING, L.L.C.

Phone (985) 449-0094 314 East Bayou Road
Fax: (985) 449-0085 Thibodaux, Louisiana 70301
E-mail: ACADIA@DDPC.COM

FIELD BOOK 201, PG 85-86 FIELD BOOK COMPLETED ON AUGUST 6, 2007 A.L.S. FILE 2007/07-0004/01-0001.000