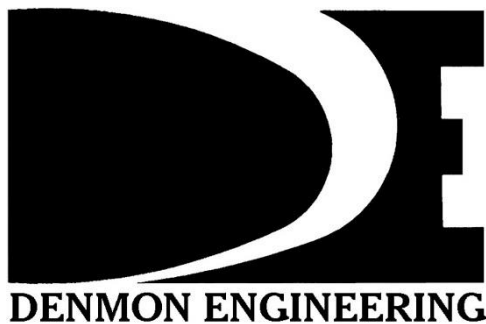


EXHIBIT I
EAST OUACHITA DEVELOPMENT
EXISTING UTILITIES

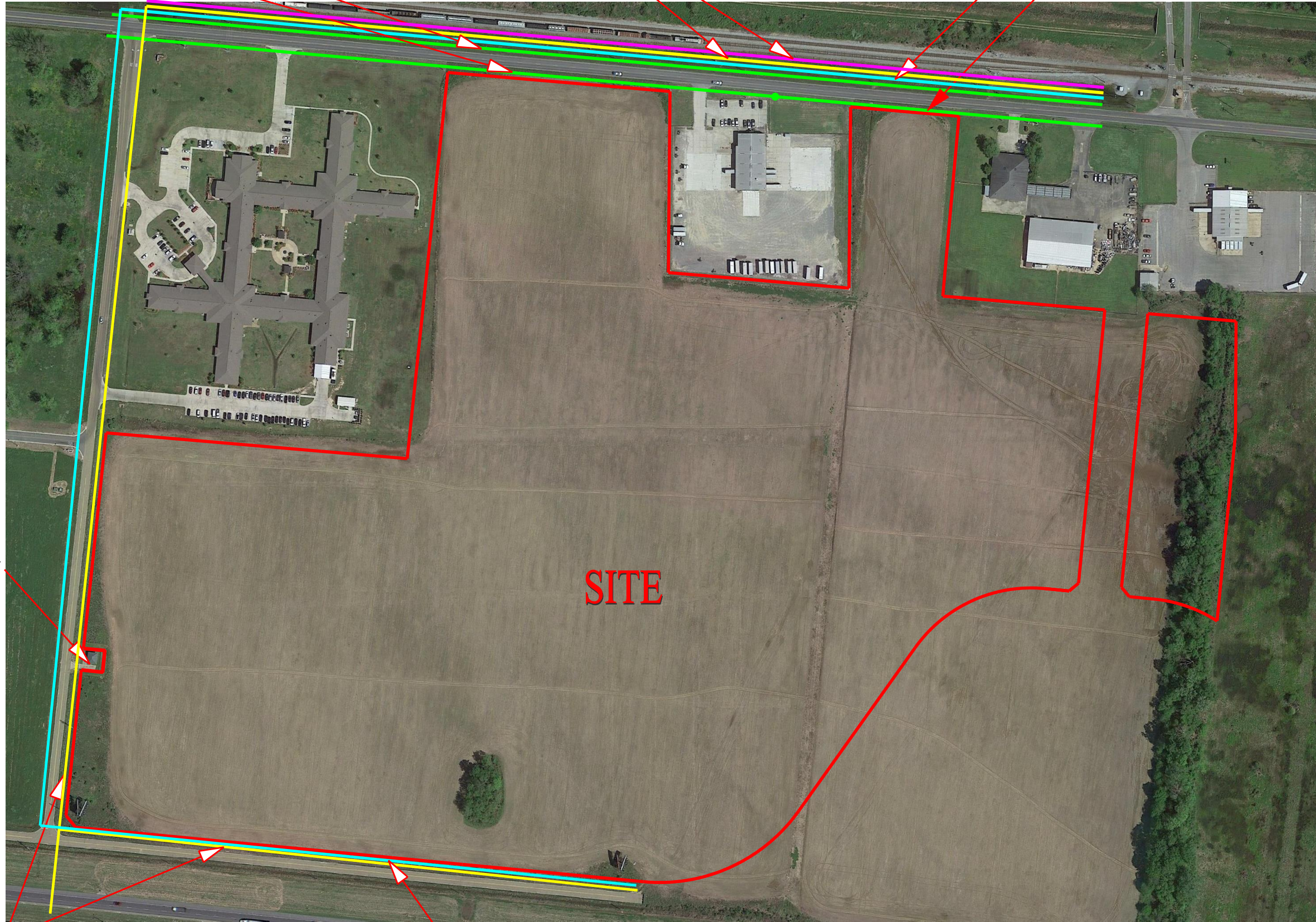


EAST OUACHITA DEVELOPMENT EXISTING UTILITIES, 68.08 ACRES

ATMOS GAS, 6" PLASTIC, 395 PSI
ATMOS GAS, 4" PLASTIC, 60 PSI

AT&T DATA AND PHONE LINE
CITY OF MONROE, 12" SEWER

CITY OF MONROE, 16" WATER
ATMOS GAS, 2" PLASTIC, 60 PSI



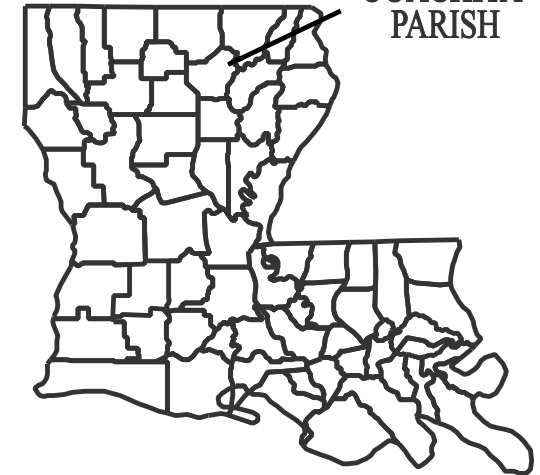
CITY OF MONROE,
SEWER
LIFT STATION

SITE

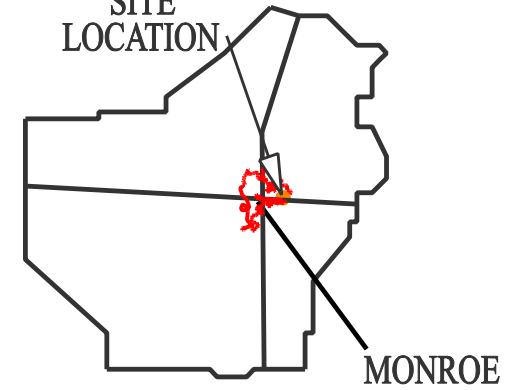
CITY OF MONROE, 15" SEWER

CITY OF MONROE, 6" WATER

OUACHITA
PARISH



SITE
LOCATION



MONROE

LEGEND

— PROPERTY
BOUNDARY



Prepared By

DENMON
ENGINEERING
ENGINEERS AND SURVEYORS
114 VENABLE LANE
MONROE, LOUISIANA 71203