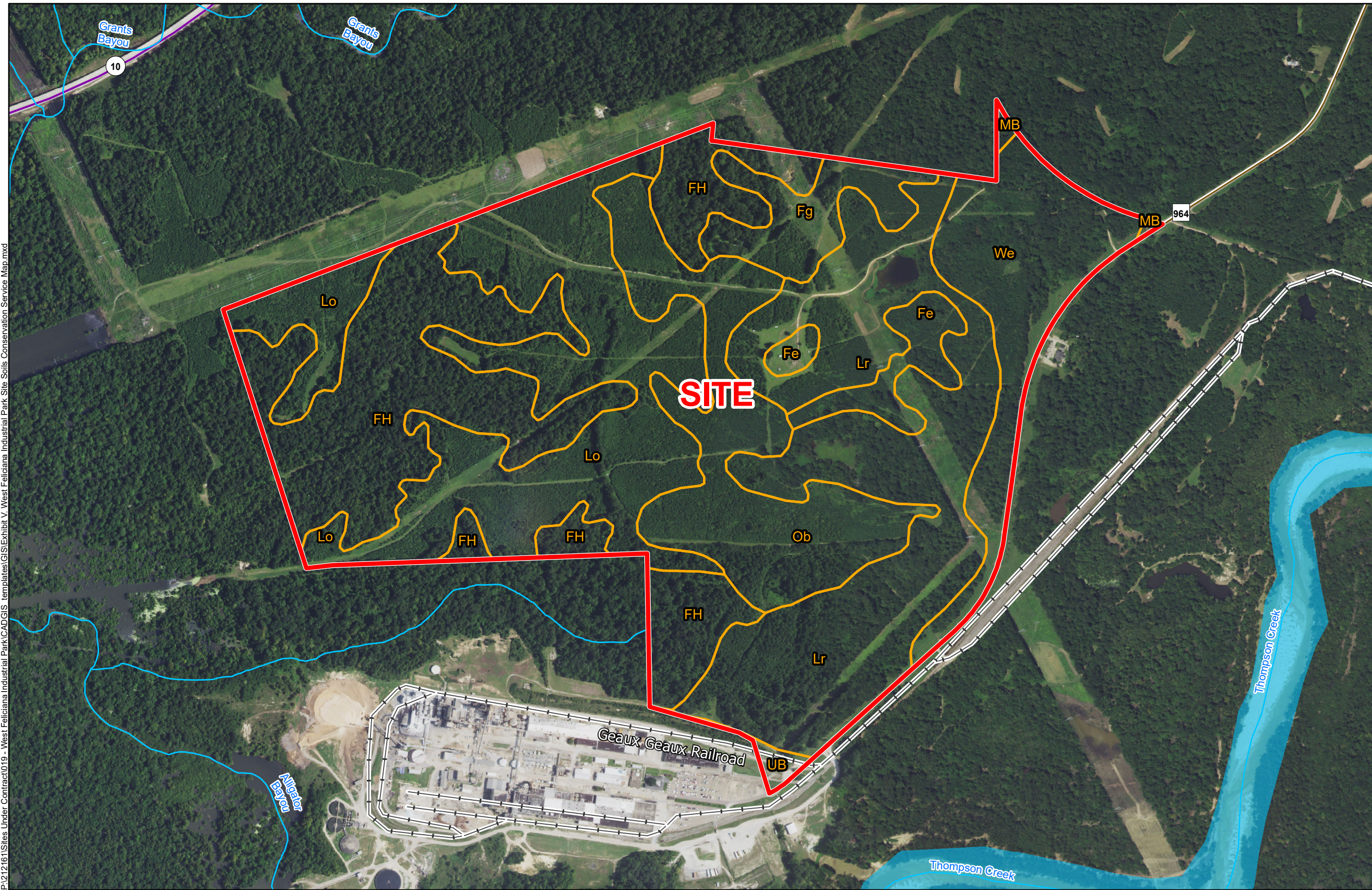


Exhibit V. West Feliciana Industrial Park Site Soils Conservation Service Map



West Feliciana Industrial Park Site Soils Conservation Service Map

West Feliciana Industrial Park Site
West Feliciana Parish, LA



BRAC



West Feliciana Parish

LEGEND

- Site Boundary (547.31 Ac.)
- Soil Type**
- FH - Feliciana and Natchez silt loams, 8 to 60 percent slopes (0% hydric)
- Fe - Feliciana silt loam, 1 to 3 percent slopes (0% hydric)
- Fg - Feliciana silt loam, 3 to 8 percent slopes (0% hydric)
- Lo - Loring silt loam, 1 to 3 percent slopes (5% hydric)
- Lr - Loring silt loam, 3 to 8 percent slopes (0% hydric)
- MB - Morgan field and Bigbee soils, frequently flooded (5% hydric)
- Ob - Oliver silt loam, 1 to 3 percent slopes (5% hydric)
- UB - Urban land (0% hydric)
- We - Weyanoke silt, 1 to 3 percent slopes
- Existing Roadway**
- Urban State Highway
- Rural State Highway
- Railroad
- Stream or River
- Waterbody

Baton Rouge Area Chamber.

Date:	5/17/2017
Project Number:	212161
Drawn By:	TMK
Checked By:	JAY

General Notes:
 1. No attempt has been made by CSRS, Inc. to verify site boundary, title, actual legal ownership, deed restrictions, servitudes, easements, or other burdens on the property, other than that furnished by the client or his representative.
 2. Transportation data from 2013 TIGER datasets via U.S. Census Bureau at [ftp://ftp2.census.gov/geo/tiger/TIGER2013](http://ftp2.census.gov/geo/tiger/TIGER2013).
 3. Soils data from USDA SSURGO website: <http://websoilsurvey.sc.egov.usda.gov/App/WebSoilSurvey.aspx>.
 4. 2015 aerial imagery from USDA-APFO National Agricultural Inventory Project (NAIP) and may not reflect current ground conditions.

N

Scale 1:10,000
0 530 1,060 Feet

CSRS
 IMAGINE SHAPE DELIVER

6767 Perkins Road Suite 200 Baton Rouge, LA 70808
 Telephone: 225 769-0546 Fax: 225 767-0060
www.csrsonline.com

P:\212161\Sites Under Contract\019 - West Feliciana Industrial Park\CAD\GIS templates\GIS\Exhibit V. West Feliciana Industrial Park Site Soils Conservation Service Map.mxd