

Area of Interest (AOI)

**Soil Map**

Soil Data Explorer

Shopping Cart (Free)

Printable Version Add to Shopping Cart

Search

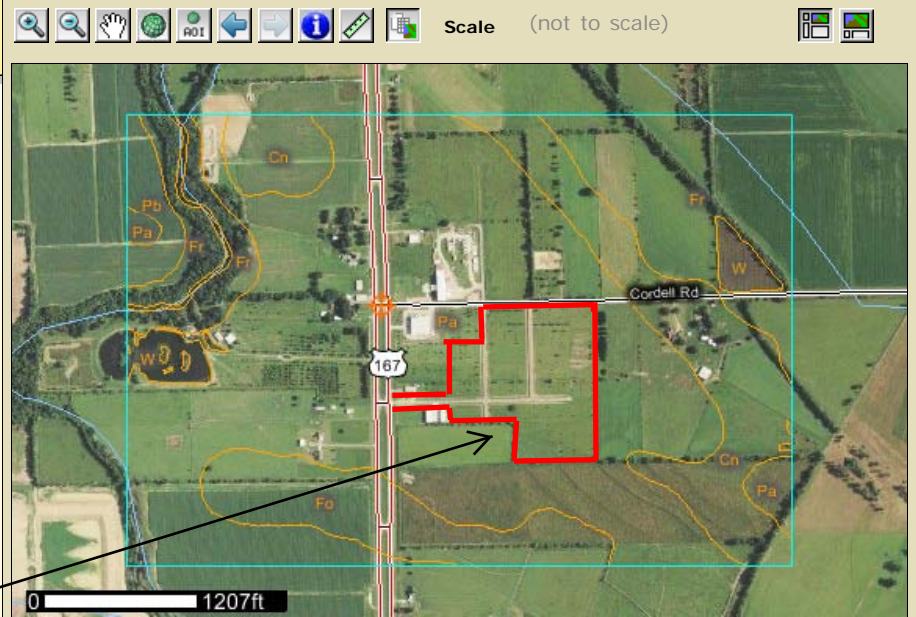
Map Unit Legend

Vermilion Parish, Louisiana (LA113)

Map Unit Symbol	Map Unit Name	Acres in AOI	Percent of AOI
Cn	Coteau silt loam, 1 to 3 percent slopes	57.9	13.9%
Fo	Frost silt loam	32.7	7.8%
Fr	Frost silt loam, occasionally flooded	64.1	15.3%
Pa	Patoutville silt loam, 0 to 1 percent slopes	244.3	58.4%
Pb	Patoutville silt loam, 1 to 3 percent slopes	8.1	1.9%
W	Water, large	10.9	2.6%
<b>Totals for Area of Interest</b>		<b>418.0</b>	<b>100.0%</b>

Deere Park

Soil Map



**Warning: Soil Map may not be valid at this scale.**

You have zoomed in beyond the scale at which the soil map for this area is intended to be used. Mapping of soils is done at a particular scale. The soil surveys that comprise your AOI were mapped at 1:24,000. The design of map units and the level of detail shown in the resulting soil map are dependent on that map scale.

Enlargement of maps beyond the scale of mapping can cause misunderstanding of the detail of mapping and accuracy of soil line placement. The maps do not show the small areas of contrasting soils that could have been shown at a more detailed scale.

**Data Available**

To see available data for a specific point on the map, click the map at the location of interest.

The point you clicked is marked with the identified point icon:

To see a map showing available data for all locations in the U.S. and territories, as a PDF in a separate browser window, click the **Soil Survey Status** link in the Navigation Bar above.