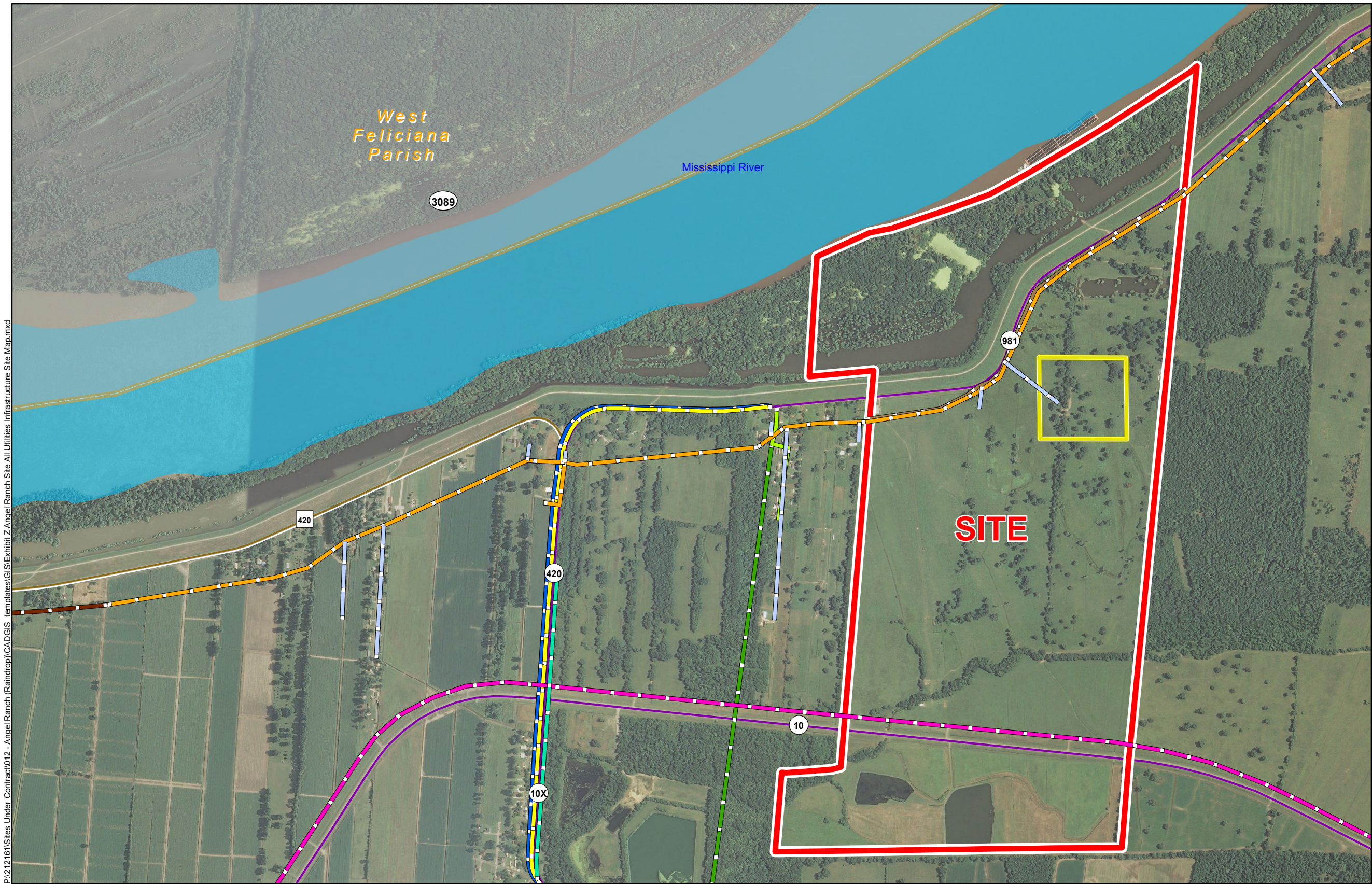
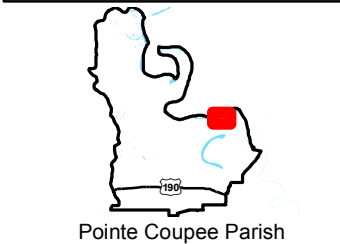
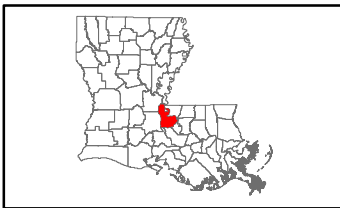


Exhibit Z. Angel Ranch Site All Existing Utilities Infrastructure Map



All Existing Utilities
Angel Ranch Site
Pointe Coupee Parish, LA

BRAC



LEGEND

- Site Boundary (731.56 Acres +/-)
- Sample 25-Acre Site Pad
- Telecommunications
- Existing 2 in. Natural Gas Line
- Existing Water - 8 in. PVC
- Existing Sewer - 4 in. Force Main
- Entergy**
 - Single Phase Electrical
 - Three Phase Electrical
 - Two Phase Electrical
- Pointe Coupee Electric**
 - Single Phase Electrical
 - Three Phase Electrical
- Existing Roadway**
 - Urban State Highway
 - Rural State Highway
- Waterbody
- Parish Boundary

General Notes:
1. No attempt has been made by CSRS, Inc. to verify site boundary, title, actual legal ownership, deed restrictions, servitudes, easements, or other burdens on the property, other than that furnished by the client or his representative.
2. Transportation data from 2013 TIGER datasets via U.S. Census Bureau at <ftp://ftp2.census.gov/geo/tiger/TIGER2013>.
3. Utility information from visual inspection and/or the individual utility operators. Exact field location has not been determined by survey. The lines shown are an approximate representation only and may have been offset for depiction purposes.
4. 2013 aerial imagery from USDA-APFO National Agricultural Inventory Project (NAIP) and may not reflect current ground conditions.



Baton Rouge Area Chamber
Project Number: 212161.20.012
Drawn By: MAT
Checked By: TMG

CSRS
IMAGINE SHAPE DELIVER
6767 Perkins Road Suite 200 Baton Rouge, LA 70808
Telephone: 225 769-0546 Fax: 225 767-0060
www.csrsonline.com