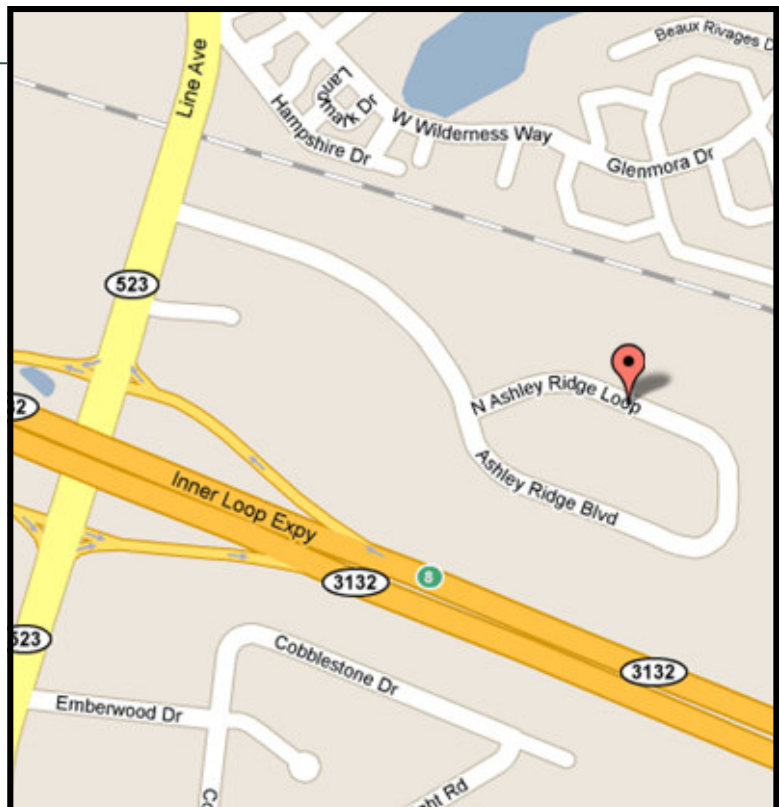


# 725 North Ashley Ridge Loop Shreveport, Louisiana



## HIGHLIGHTS

- New 9,657 square foot medical office building ready for occupancy
- Conveniently located in Southeast Shreveport along the Inner Loop Expressway less than 1 mile from Interstate 49
- Situated in an upscale area featuring medical, office, and retail space



Individual Memberships

For more information, contact:  
**Arnold Cannon, REALTOR®**

Licensed in Louisiana, USA

**UL COLEMAN**  
COMPANIES

207 Milam Street Suite C • Shreveport, LA 71101-7226 • p: 318.221.0541 • f: 318.221.0568 • [www.ulcoleman.com](http://www.ulcoleman.com)

© 2011 U.L. Coleman Company, Ltd. The statements and figures presented herein, while not guaranteed, are secured from sources we believe authoritative. U.L. Coleman Company and its officers, directors, employees, licensees, agents, and representatives do not, in any way, guarantee, warrant, or represent the accuracy of said information. The availability, price, and features of this property are subject to change at anytime without prior notice.



# 725 North Ashley Ridge Loop Shreveport, Louisiana



## Medical Office Building For Sale \$1,980,000

9,657 Square Feet

9,000 Rentable Square Feet  
for Investment Property

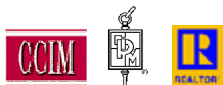
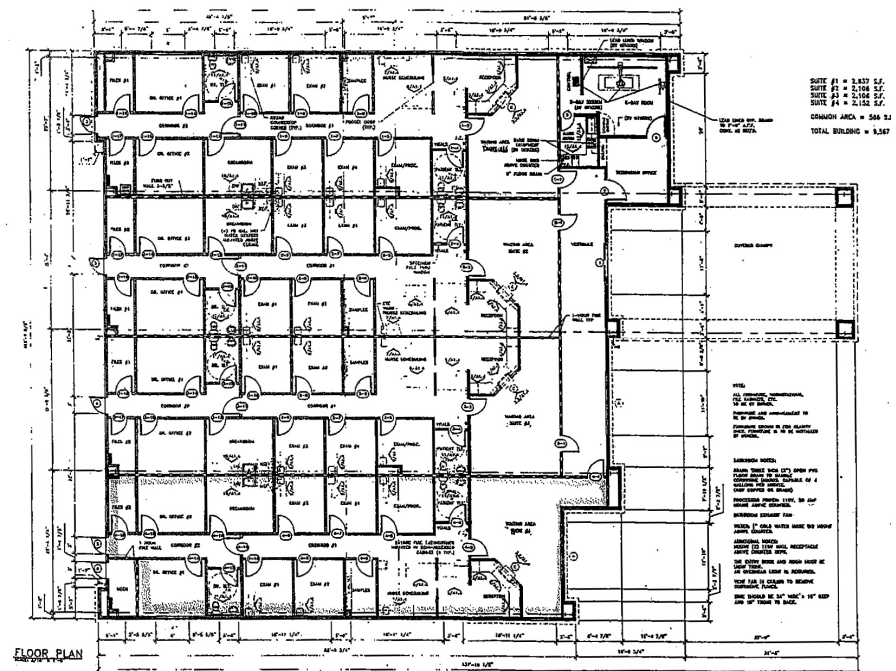
Lot size 1.046 Acres

Separate X-Ray Room/  
Technician Office

Covered Patient Drive Up

### Four Separate Office Suites

- Suite 100 2,106 S.F.
- Suite 200 2,106 S.F.
- Suite 300 2,106 S.F.
- Suite 400 2,152 S.F.
- X-Ray 531 S.F.



Individual Memberships

For more information, contact:  
**Arnold Cannon, REALTOR®**

Licensed in Louisiana, USA

**UL COLEMAN**  
COMPANIES

207 Milam Street Suite C • Shreveport, LA 71101-7226 • p: 318.221.0541 • f: 318.221.0568 • [www.ulcoleman.com](http://www.ulcoleman.com)