



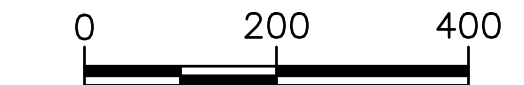
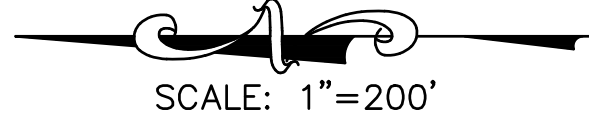
Exhibit D. Bastrop IP Mill Site Property Boundary Exhibit

Bastrop IP Mill Site Property Boundary Exhibit

Project:

Bastrop IP Mill Site
 Morehouse Parish, LA

Client:



Revisions:

#	Date	Description

Key Plan:

LEGEND

— SITE BOUNDARY (111.30 AC. ±)

Sheet Title:

Property Boundary Exhibit

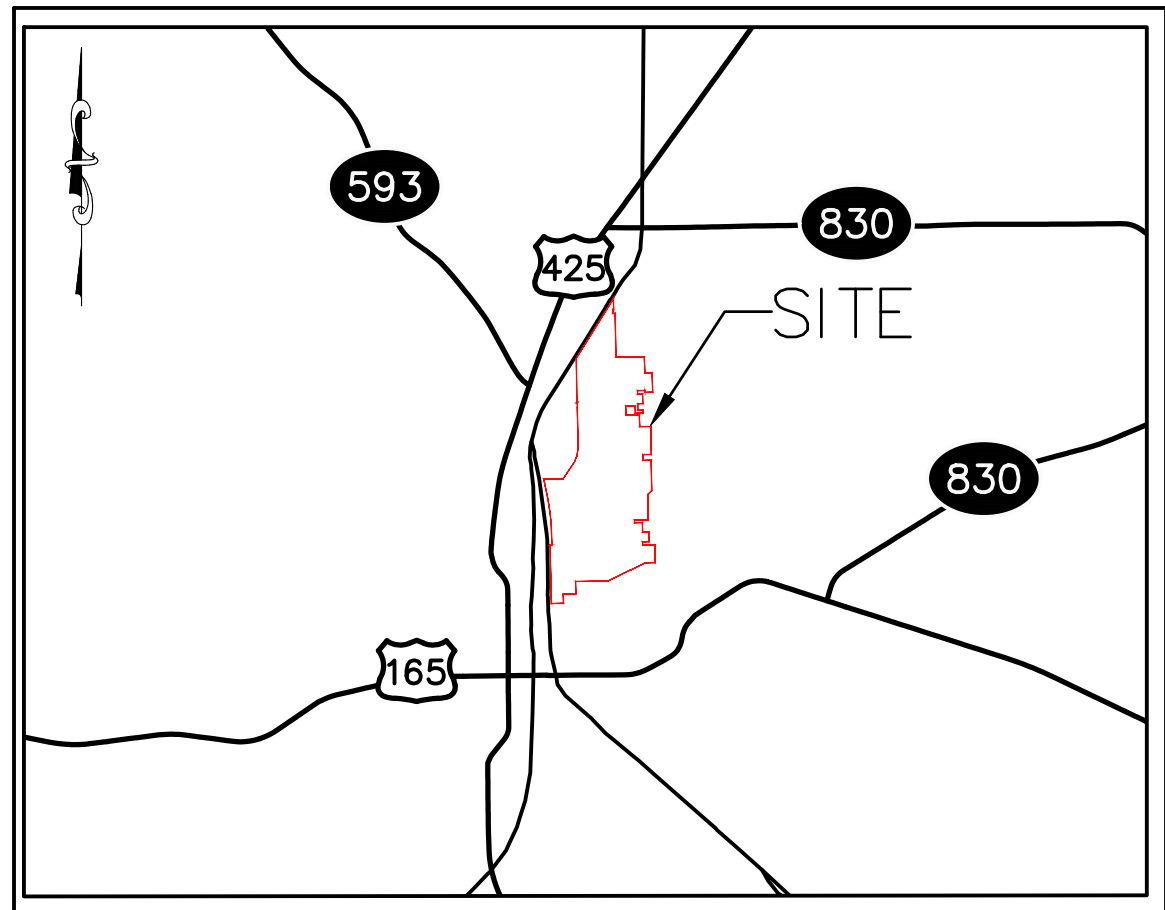
Date: June 2019

Project Number: 216269

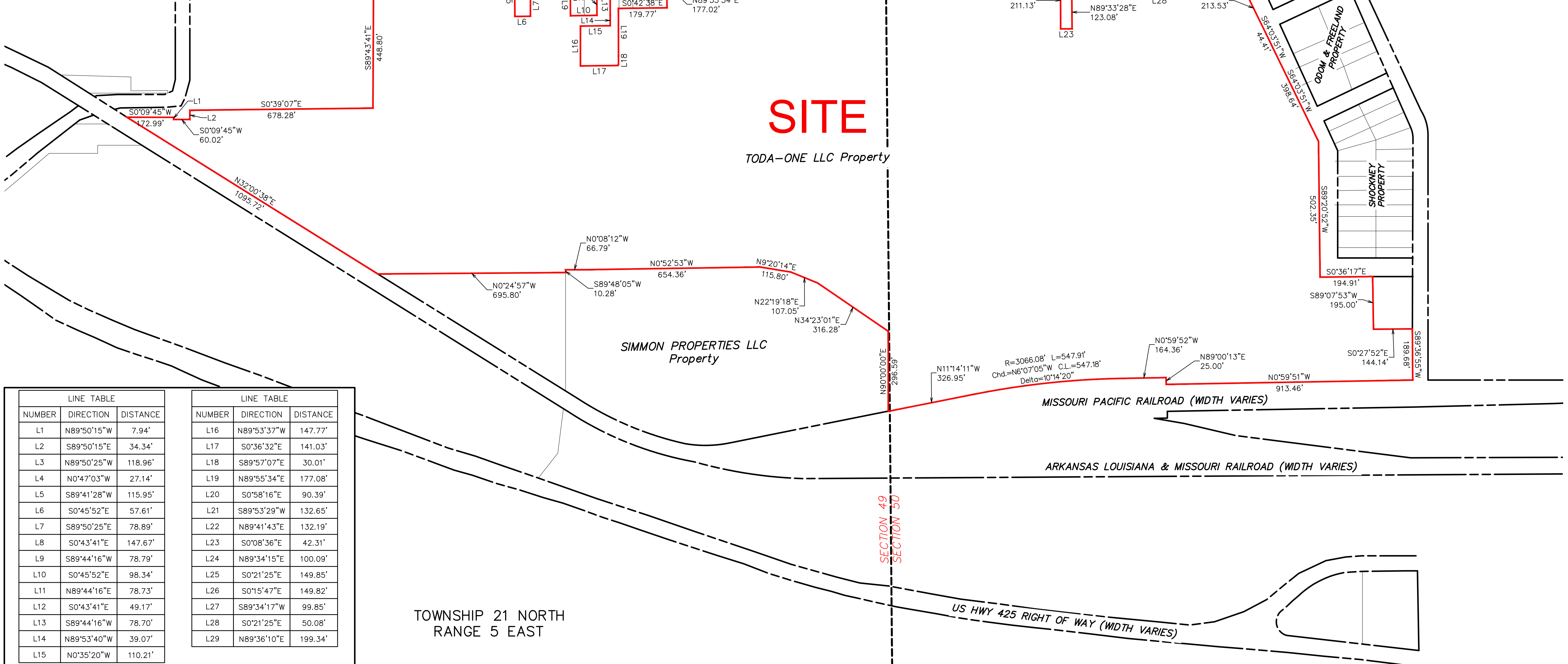
Drawn By: DWC

Checked By: EEB

Sheet:



VICINITY MAP
 SCALE: 1"=3000'



LINE TABLE			LINE TABLE		
NUMBER	DIRECTION	DISTANCE	NUMBER	DIRECTION	DISTANCE
L1	N89°50'15"W	7.94'	L16	N89°53'37"W	147.77'
L2	S89°50'15"E	34.34'	L17	S0°36'32"E	141.03'
L3	N89°50'25"W	118.96'	L18	S89°57'07"E	30.01'
L4	N0°47'03"W	27.14'	L19	N89°55'34"E	177.08'
L5	S89°41'28"W	115.95'	L20	S0°58'16"E	90.39'
L6	S0°45'52"E	57.61'	L21	S89°53'29"W	132.65'
L7	S89°50'25"E	78.89'	L22	N89°41'43"E	132.19'
L8	S0°43'41"E	147.67'	L23	S0°08'36"E	42.31'
L9	S89°44'16"W	78.79'	L24	N89°34'15"E	100.09'
L10	S0°45'52"E	98.34'	L25	S0°21'25"E	149.85'
L11	N89°44'16"E	78.73'	L26	S0°15'47"E	149.82'
L12	S0°43'41"E	49.17'	L27	S89°34'17"W	99.85'
L13	S89°44'16"W	78.70'	L28	S0°21'25"E	50.08'
L14	N89°53'40"W	39.07'	L29	N89°36'10"E	199.34'
L15	N0°35'20"W	110.21'			

- GENERAL NOTES:**
- No attempt has been made by CSRS, Inc. to verify title, actual legal ownership, deed restrictions, servitudes, easements, or other burdens on the property, other than that furnished by the client or his representative.
 - Depicted exhibit based on "Act of sale by Ineternational Paper Co.to Toda-One LLC" dated October 17, 2018.
 - This is not a property boundary survey and is not intended to meet the Louisiana standards of practice for property boundary surveys. Bearings and distances of tracts were obtained from document referenced above.
 - The coordinate system used is NAD83 Louisiana State Plane South (US feet). Coordinates were derived by overlaying the boundary on an aerial photograph and are within 100' of true location.
 - Rights of Way, Easements, and Servitudes shown hereon have not been verified in the field and any shown are for general locative information only.