

# Exhibit L.

## Spanish Trail Industrial Park

### Potable Water Infrastructure Map





# Spanish Trail Industrial Park Potable Water Infrastructure Map

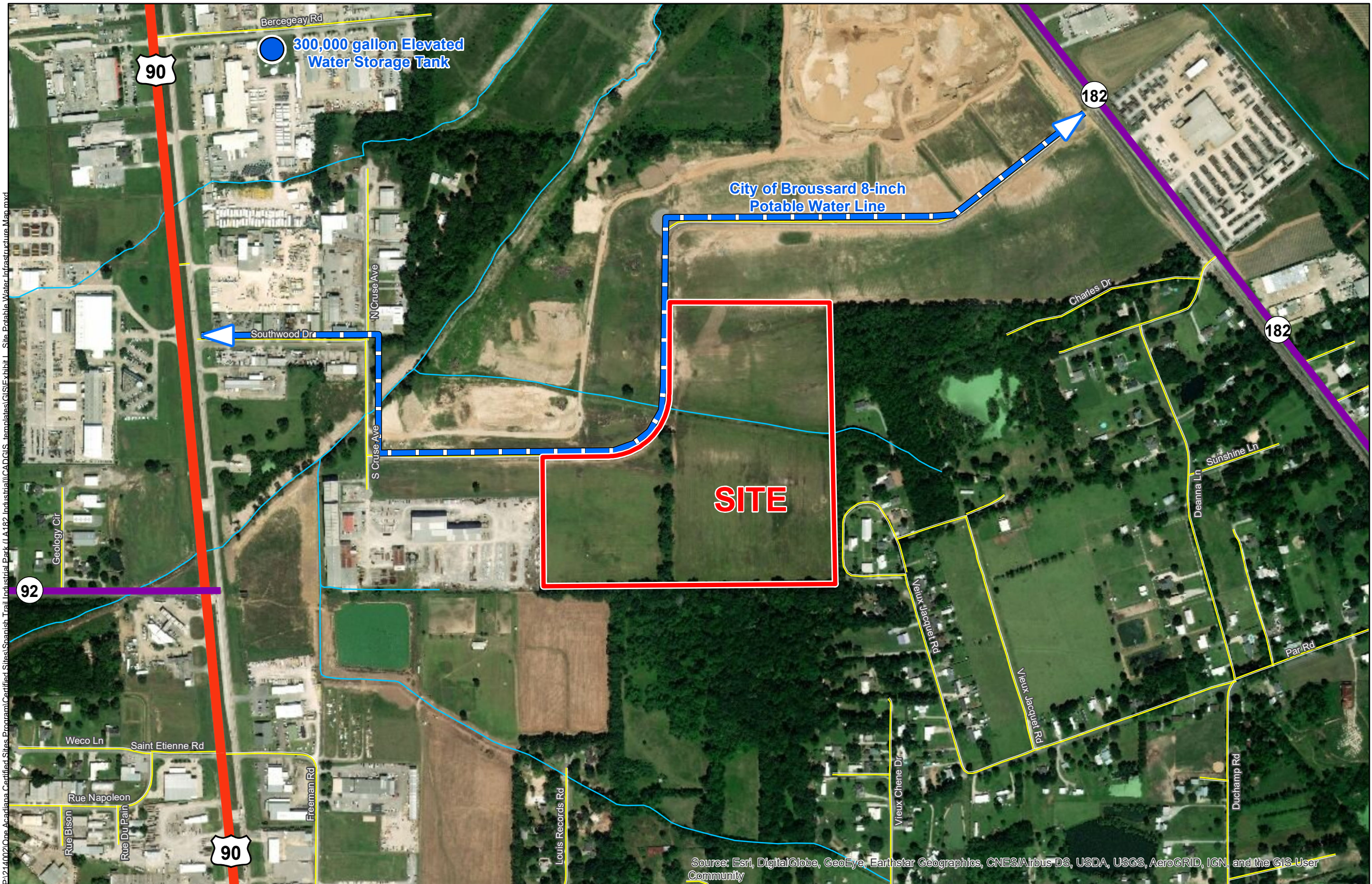
Spanish Trail Industrial Park  
St. Martin Parish, LA

One Acadiana



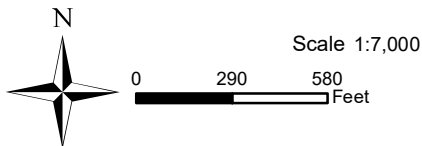
## LEGEND

- Site Boundary
- City of Broussard 8-inch Potable Water Line
- 300,000 gallon Elevated Water Storage Tank
- Local Roads
- Stream
- Major Roads**
  - US Highway
  - Urban State Highway



General Notes:

1. No attempt has been made by CSRS, Inc. to verify site boundary, title, actual legal ownership, deed restrictions, servitudes, easements, or other burdens on the property, other than that furnished by the client or his representative.
2. Transportation data from 2013 TIGER datasets via U.S. Census Bureau at [ftp2.census.gov/geo/tiger/TIGER2013](http://ftp2.census.gov/geo/tiger/TIGER2013).
3. Utility information from visual inspection and/or the individual utility operators. Exact field location has not been determined by survey. The lines shown are an approximate representation only and may have been offset for depiction purposes.
4. 2015 aerial imagery from USDA-APFO National Agricultural Inventory Project (NAIP) and may not reflect current ground conditions.



Date:	1/22/2020
Project Number:	214002
Drawn By:	BNF
Checked By:	DWC

