



Exhibit H.

Loul's Landing

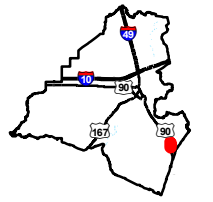
Zoning Map & Documents



Loul's Landing Zoning Map & Documents

Loul's Landing
Lafayette Parish, LA

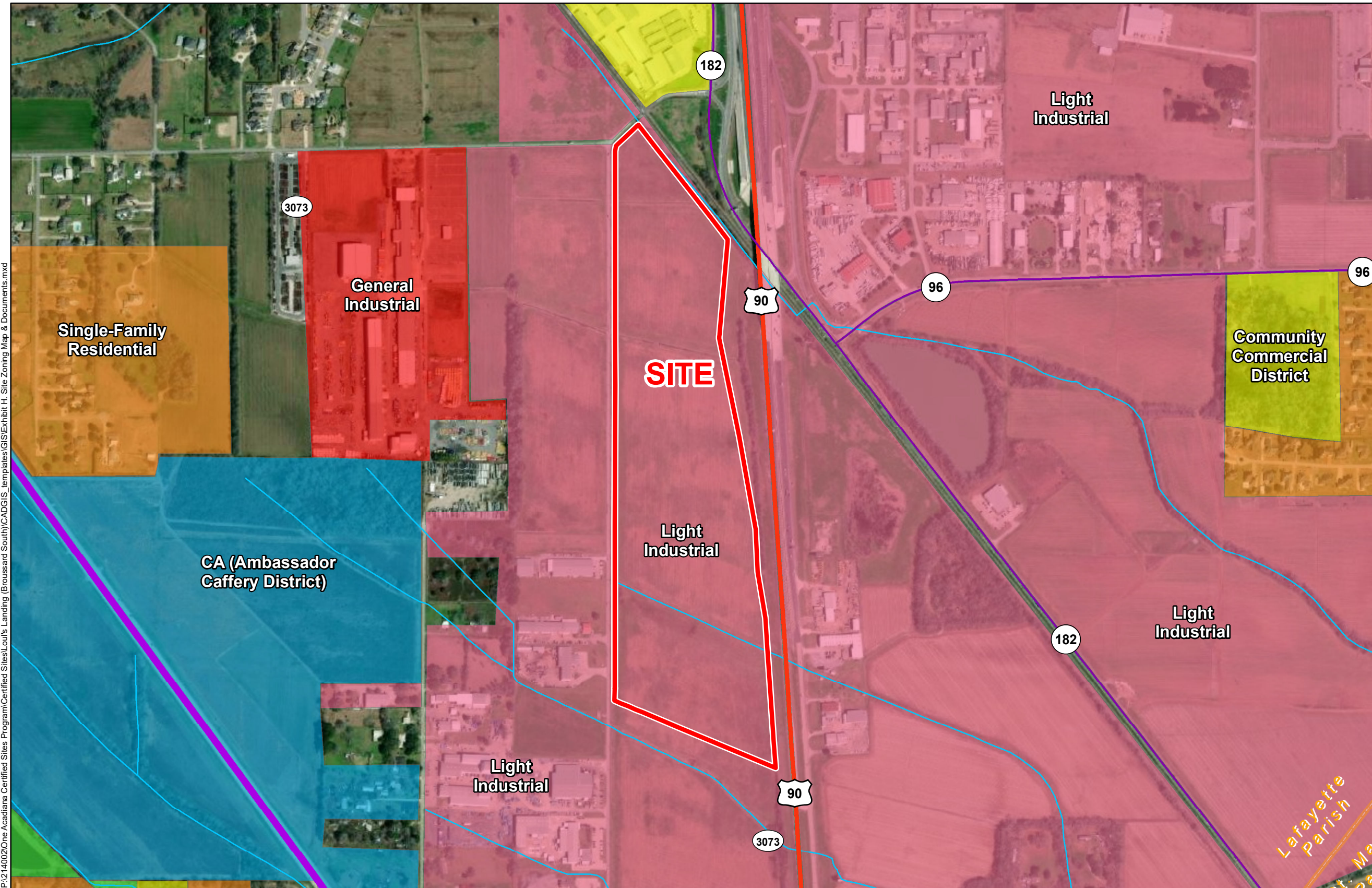
One Acadiana



Lafayette Parish

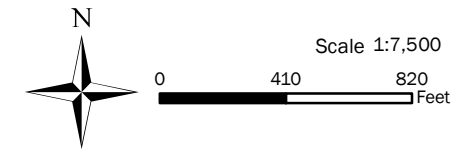
LEGEND

- ▭ Site Boundary
- City of Broussard Zoning**
- ▭ CA (Ambassador Caffery Commercial District)
- ▭ CC (Community Commercial District)
- ▭ General Industrial
- ▭ Light Industrial
- ▭ Residential Accessory
- ▭ Single-Family Residential
- Existing Roadway**
- ▬ US Highway
- ▬ 4-Lane State Highway
- ▬ Urban State Highway



P:\214002\One Acadiana Certified Sites Program\Certified Sites\Loul's Landing (Broussard South)\CADGIS Templates\GIS\Exhibit H. Site Zoning Map & Documents.mxd

- General Notes:
1. The information presented herein is for planning purposes only. Further detailed due diligence MUST be completed prior to making decisions regarding the site.
 2. No attempt has been made by CSRS, Inc. to verify site boundary, title, actual legal ownership, deed restrictions, servitudes, easements, or other burdens on the property, other than that furnished by the client or his representative.
 3. Transportation data from 2013 TIGER datasets via U.S. Census Bureau at <ftp://ftp2.census.gov/geo/tiger/TIGER2013>.
 4. 2015 aerial imagery from USDA-APFO National Agricultural Inventory Project (NAIP) and may not reflect current ground conditions.
 5. Zoning information derived from City of Broussard Zoning Department.



Date:	6/6/2022
Project Number:	213151
Drawn By:	SEW
Checked By:	EEB



applicable provisions of this Ordinance.

2. Uses not permitted or not listed. Land uses not permitted are those indicated by a dash "-" on the table. Land uses not listed on the tables are not allowed, except as provided as Variances or Exemptions from Zoning Ordinance Requirements.

Loul's Landing Zoning Map & Documents

SECTION 11 INDUSTRIAL ZONING DISTRICTS

11.01 Description of Industrial Zoning Districts

Light Industrial (including Hazardous Materials Sale/Distribution Sites)	LI
General Industrial (including Hazardous Materials Use or Temporary Hazardous Waste Storage Sites)	GI

11.0 General

The Light Industrial and General Industrial Districts (LI and GI) are established to provide industrial based districts inside areas of the city to minimize impacts to other districts and to implement the applicable comprehensive plans for appropriate zoning districts in which the principal use of the land is for industrial purposes that may involve materials or wastes commonly associated with industrial activities. These districts are intended to provide separate and distinct allowed uses based on the availability of urban services, the surrounding land uses, and the applicable comprehensive plan designation for the area.

11.0.1 Definitions

(a) "Hazardous materials" shall be as defined by 42 USC Section 9601(14) and as further defined as hazardous materials, hazardous wastes, hazardous substances, pollutants, contaminants or toxic substances by the Louisiana Department of Environmental Quality and U.S. Environmental Protection Agency regulations. For the purposes of this Ordinance, Hazardous Materials shall include solid wastes as defined by LSA-R.S. 30: 2153 et seq. (other than construction and

demolition debris) or oil field wastes as defined by LSA-R.S. 30:73 et seq.

(b) "Environmental laws" means any and all federal, state and local laws, statutes, Ordinances, rules, regulations, permits, licenses, approvals, guidance, interpretations, orders of courts and governmental agencies or authorities and all other legal requirements relating to, regulating, or imposing liability or standards of conduct concerning, any hazardous, toxic or dangerous waste, substance or materials or the protection of human health or the environment, as now or at any time hereafter in effect, including, but not limited to, requirements pertaining to the manufacture, processing, distribution, use, treatment, storage, disposal, transportation, handling, reporting, licensing, permitting investigation or remediation of hazardous material. Environmental laws include, without limitation, the Comprehensive Environmental Response, Compensation and Liability Act [42 U.S.C. §9601, et seq., "CERCLA"], the Hazardous Materials Transportation Act [49 U.S.C. §1801 et seq.], the Resource Conservation and Recovery Act [42 U.S.C. §6901 et seq.], the Clean Water Act [33 U.S.C. § 1251 et seq.], the Clean Air Act [42 U.S.C. §7401 et seq.], the Toxic Substances Control Act [15 U.S.C. §2601 et seq.], the Safe Drinking Water Act [42 U.S.C. §300 et seq.], the Environmental Protection Agency's regulations appearing under title 40, Code of Federal Regulations, the Occupational Safety and Health Act [29 U.S.C. §651 et seq.], and any "Superfund", "Superlien" or environmental liability act, as such laws have been amended or supplemented and any analogous future federal, or coextensive, correlative or analogous present or future applicable state or local statutes or Ordinances and the rules and regulations promulgated thereunder.

(c) *"Appendix A, Zoning Definitions" is attached hereto and made a part hereof;*

11.1 LIGHT INDUSTRIAL- LI INDUSTRIAL DISTRICTS

11.1.1 Purposes

The "Light Industrial District" is intended to provide locations for certain industries, manufacturing firms or other industrial related businesses and enterprises in areas near residential or commercial development that will not significantly detract from the residential or commercial

desirability of the area. Permissible uses within the Light Industrial Districts include facilities which store, sell or distribute unopened containerized hazardous substances entirely within completely enclosed buildings or containment areas meeting applicable state or federal laws and regulations.

11.1.2 Permitted Uses

Table 10 establishes all uses permitted within Light Industrial Districts.

11.1.4 Uses Prohibited

All uses except those listed in Table 10 are specifically prohibited in Light Industrial Districts.

11.2 GENERAL INDUSTRIAL - GI GENERAL INDUSTRIAL DISTRICTS

11.2.1 Purposes

A. The "General Industrial District," is intended to provide areas for manufacturing, industrial and general wholesale and warehousing uses.

B. Permissible uses within the General Industrial District include facilities which store, sell or distribute unopened containerized hazardous materials or substances entirely within completely enclosed buildings or containment areas meeting applicable state or federal laws or regulations, and any site which uses or stores any hazardous materials or substances or which temporarily (less than 90 days) stores hazardous waste generated in conjunction with onsite industrial processes.

11.2.2 Permitted Uses

A. Table 10 establishes all uses permitted within General Industrial Districts.

11.2.3 Uses Prohibited

All uses except those listed in Table 10 are specifically prohibited in General Industrial Districts

ORDINANCE NO. 14-459

AN ORDINANCE OF THE CITY COUNCIL OF
THE CITY OF BROUSSARD, LOUISIANA, AMENDING
THE ZONING ORDINANCE OF THE CITY OF BROUSSARD, LOUISIANA

The City Council of the City of Broussard, Louisiana, meeting in regular session, on the 12th day of August, 2014, after having considered that it would be in the best interest and welfare of the citizens of Broussard, Louisiana, to amend its existing Zoning Ordinance.

BE IT ORDAINED that Appendix A, Definitions, of the Zoning Ordinance, is hereby amended to add the following:

Assembly: fitting components together: the putting together of parts to make a finished product; see also *Fabricate*.

Fabricate: fitting components together: the putting together of parts to make a finished product; see also *Assembly*.

General Industrial: is characterized by facilities which require large plants and equipment with a large workforce and are almost exclusively producing materials not intended for the end consumer. General Industrial facilities may create significant noise, air or water disturbances of pollution and require significant separation from more restrictive zoning districts. Examples would be large equipment or vehicle manufacture, boat building or manufactured home construction, chemical plants, refineries, foundries and sugar mills. General Industrial may include, subject to state, federal or local permitting limitations, creation or blending of chemicals or the handling of or activities involving regulated hazardous materials or substances

Light Industrial: the manufacture of items that use moderate amounts of raw or partially processed materials to produce other items of higher value. Light industrial work is of smaller scale and less intensive than *General Industrial* and requires less heavy machinery but may include assembly work, moving and storage of materials of more significant size and appearance than the *Community Commercial* designation and may create more noise, air, or water disturbances or other activities which require separation from more restrictive zoning districts. Criteria for light industrial manufacturing sites vary due to factors related to the type of industry, and other influencing factors such as number of employees, facility size, potential for discharge or emission of pollutants, and whether products are primarily targeted to other businesses rather than consumers. Light industrial does not include creation or blending of chemicals or the handling of or activities involving regulated hazardous materials or substances.

Manufacturing (heavy): the making or creation of products, goods or wares from raw materials by manual labor or by machinery. Manufacturing (heavy) may include *assembly* or *fabrication* but may also include the creation of component parts or other creative processes that result in the production of new items intended as a final product or for subsequent use in *assembly* or *fabrication* activities..

Manufacturing (light): *Assembly* or *Fabrication* activities.

BE IT FURTHER ORDAINED that all Ordinances or Resolutions, or parts thereof, in conflict are herewith and hereby repealed.

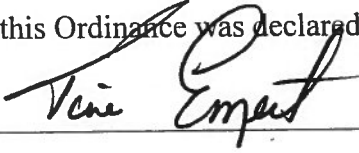
And this Ordinance being submitted to a vote, the vote thereon was as follows:

YEAS: *RACCA, BONIN, BONAQUE, YOCO, JOHNSON, HIGGINBOTHAM & Co*

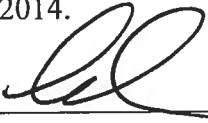
NAYS: *None*

ABSENT:

And this Ordinance was declared adopted this 13th day of Aug., 2014.



TINA EMERT, City Clerk



CHARLES LANGLINAIIS, Mayor

The newspapers of **Louisiana** make public notices from their printed pages available electronically in a single database for the benefit of the public. This enhances the legislative intent of public notice - keeping a free and independent public informed about activities of their government and business activities that may affect them. Importantly, Public Notices now are in one place on the web (www.PublicNoticeAds.com), not scattered among thousands of government web pages.

County: Lafayette

Printed In: The Advertiser

Printed On: 2014/07/18

1884579 PUBLIC NOTICE CITY OF BROUSSARD ADOPTION OF ORDINANCE 14-459 The City Council of the City of Broussard, Louisiana, will conduct a public hearing on, and will consider for adoption, an Ordinance titled "An Ordinance of the City Council of the City of Broussard, Amending the Zoning Ordinance of the City of Broussard." Said amendment of the Zoning Ordinance seeks to amend Appendix A, Definitions, to add definitions of the following terms: Assembly; Fabricate; General Industrial; Light Industrial; Manufacturing (heavy); and Manufacturing (light). A complete copy of the ordinance is on file at City Hall, City of Broussard, for review by the public, during normal business hours. The meeting will be held on August 12, 2014 at 6:00 p.m. Council Chambers, located at 416 E. Main Street, Broussard, Louisiana, and the public is invited to attend.

Public Notice ID: 21549604

Table 10

Commercial and Industrial Districts - Permitted Land Use

Page 1

P = permitted use - = not permitted

GENERAL RETAIL

USE	CN	CC	CA	CO	LI	GI	NOTES
New merchandise sales < 80,000 ft ²	P	P	P	P	P	P	
New merchandise sales > 80,000 ft ²	-	P	P	-	P	P	
Flea Market	P	P	-	-	P	P	
Building/hardware/landscape material	-	P	P	-	P	P	
Furniture/fixtures/appliance sales	P	P	P	-	P	-	
Market - convenience/ specialty food/beverage	P	P	P	P	P	-	
Market - grocery/supermarket	P	P	P	-	P	-	
Produce Market	P	P	P	P	P	-	
Pawn Shop	P	P	-	-	-	-	
Plant nursery/landscape	-	P	P	-	P	-	
Fertilizer/Composting Plant	-	-	-	-	-	P	
Unbagged Fertilizer/Compost Facility	-	-	-	-	P	P	includes mulch
Used merchandise sales	-	P	-	-	P	P	
Antique/collectible shop	P	P	P	P	-	-	
Museum/Library/Gallery	P	P	P	P	-	-	
Personal Instruction Studio (fitness, dance, etc.)	P	P	P	P	-	-	
Sporting Goods	P	P	P	P	P	-	
School, private- elementary/secondary	P	P	-	-	-	-	
School - college (private)	P	P	-	-	-	-	
School - business/tech/vocational	P	P	-	P	P	-	

CN - Neighborhood Commercial
 CC - Community Commercial
 CA - Ambassador Caffery Commercial

CO - Office Commercial
 LI - Light industrial
 GI - General Industrial

Table 10 Commercial and Industrial Districts – Permitted Land Use

P = permitted use - = not permitted

ENTERTAINMENT AND RECREATION

USE	CN	CC	CA	CO	LI	GI	NOTES
Adult club/business/sales	-	-	-	-	-	-	variance required
Athletic club/Fitness Center/Spa	P	P	P	P	P	-	
Campground/Park	-	P	-	-	P	-	
Stadium/Field/Arena	-	P	-	-	P	-	
Sports Facility (indoor)	-	P	P	-	P	-	
Commercial recreation <3 acres	P	P	P	-	P	-	
Commercial recreation >3 acres	-	P	P	-	P	-	
Theater (indoor)	P	P	P	-	P	-	
Theater (outdoor)	-	P	P	-	P	-	
Casino	-	P	P	-	P	P	if state licensed
Amusement Park	-	P	P	-	P	P	inc. water park
	CN	CC	CA	CO	LI	GI	

CN – Neighborhood Commercial
 CC – Community Commercial
 CA – Ambassador Cafferey Commercial

CO – Office Commercial
 LI – Light industrial
 GI – General Industrial

Table 10 Commercial and Industrial Districts – Permitted Land Use

P = permitted use - = not permitted

FOOD SERVICE

USE	CN	CC	CA	CO	LI	GI	NOTES
Liquor sales	P	P	P	P	P	-	
Restaurant, counter service	P	P	P	P	P	-	
Restaurant, table service	P	P	P	P	P	-	
Drive-through food/liquor sales	P	P	P	P	P	-	
Entertainment (with food)	P	P	P	P	P	-	sports bar, etc.
Catering service	P	P	P	P	P	-	
	CN	CC	CA	CO	LI	GI	

CN – Neighborhood Commercial
 CC – Community Commercial
 CA – Ambassador Cafferey Commercial

CO – Office Commercial
 LI – Light industrial
 GI – General Industrial

Table 10 Commercial and Industrial Districts – Permitted Land Use

P = permitted use - = not permitted

HUMAN HEALTH AND VETERINARY SERVICES

USE	CN	CC	CA	CO	LI	GI	NOTES
Ambulance service	P	P	P	P	P	P	
Emergency/Quick medical care	P	P	P	P	P	-	
Hospital	-	P	P	-	P	-	
Medical Offices	P	P	P	P	P	-	
Nursing/Retirement Home	-	P	P	-	-	-	
Family/Child day care	P	P	P	P	-	-	
Homeless Shelter	P	P	-	-	-	-	
Halfway house	-	P	-	-	-	-	CC = Hwy 90 only
Animal clinic or grooming	-	P	P	-	P	-	
Animal hospital	-	P	P	-	P	-	
Animal kennel	-	-	-	-	P	-	1000' from nearest residence plus sound controls
	CN	CC	CA	CO	LI	GI	

CN – Neighborhood Commercial
 CC – Community Commercial
 CA – Ambassador Cafferey Commercial

CO – Office Commercial
 LI – Light industrial
 GI – General Industrial

Table 10 Commercial and Industrial Districts – Permitted Land Use

P = permitted use - = not permitted

GENERAL SERVICES

USE	CN	CC	CA	CO	LI	GI	NOTES
Auction (indoor)	-	P	P	-	P	P	
Auction (outdoor)	-	P	-	-	P	P	
Bed and Breakfast	P	P	P	P	P	-	
Hotel/Motel	-	P	P	P	P	-	
Business Support Services	P	P	P	P	P	P	
Equipment Rental (indoor)	P	P	P	-	P	P	
Equipment Rental (outdoor)	-	P	P	-	P	P	CC = Hwy 90 only
Oilfield Services Rental	-	P	-	-	P	P	CC = Hwy 90 only
Maintenance/Repair/Small Engine	-	P	P	-	P	P	
Antenna or communication facility	-	P	-	-	P	P	See Section 14
Mini-warehouse/Storage	-	P	-	-	P	P	
Contractor/Construction Equip. Sales	-	P	P	-	P	P	CC = Hwy 90 only
Handicraft Shop	P	P	P	-	P	P	
Light Industrial Services	-	-	-	-	P	P	
Laboratory	-	P	-	-	P	P	
Electrical Substations	-	-	-	-	P	P	Variance required
	CN	CC	CA	CO	LI	GI	

CN – Neighborhood Commercial
 CC – Community Commercial
 CA – Ambassador Cafferey Commercial

CO – Office Commercial
 LI – Light industrial
 GI – General Industrial

Table 10 Commercial and Industrial Districts – Permitted Land Use

P = permitted use - = not permitted

OFFICES, MEETING HALLS AND PUBLIC BUILDINGS

USE	CN	CC	CA	CO	LI	GI	NOTES
Banks/Financial/Investment services	P	P	P	P	-	-	
Bail bond services	-	P	-	P	-	-	
Cash Checking services	P	P	-	P	P	-	
Offices-administrative/professional	P	P	P	P	P	P	
Offices - government	P	P	P	P	P	-	
Offices - Medical/dental	P	P	P	P	-	-	
Auditorium/exhibition hall (enclosed)	-	P	P	P	-	-	
Church	P	P	P	P	-	-	
Club/lodge/meeting hall	P	P	P	P	-	-	
Conference Center	P	P	P	P	-	-	
COB Community Center							no zoning required
COB Police or Fire Station							no zoning required
Post Office/Federal Buildings							no zoning required
COB POTW Lift Station/ Sewage Treatment Facility							no zoning required
COB Public Water Supply Facility							no zoning required
COB Public Buildings							no zoning required
COB Rights-of-Way							no zoning required
School - elementary/secondary (public)							School Board lands
Pipelines, conduits, transmission lines, utilities or any other lateral facility							Variance required
	CN	CC	CA	CO	LI	GI	

CN – Neighborhood Commercial
 CC – Community Commercial
 CA – Ambassador Cafferey Commercial
 COB = City of Broussard

CO – Office Commercial
 LI – Light industrial
 GI – General Industrial

Table 10 Commercial and Industrial Districts – Permitted Land Use

P = permitted use - = not permitted

VEHICLE SALES/SERVICE

USE	CN	CC	CA	CO	LI	GI	NOTES
Auto and truck rental	P	P	P	-	P	P	
Auto and truck repair	-	P	-	-	P	P	
Large truck/machinery sales	-	P	P	-	P	P	CC = Hwy 90 only
Recreation vehicle sales	-	P	P	-	P	P	CC = Hwy 90 only
Boat sales	-	P	P	-	P	P	CC = Hwy 90 only
Manufactured homes sales	-	P	-	-	P	P	CC = Hwy 90 only
Trailer/flatbed sales	-	P	P	-	P	P	
Service station	-	P	P	-	P	P	
Oil Change/Fluid Maintenance	-	P	P	-	P	P	
Truck Stop	-	P	-	-	P	P	CC = Hwy 90 only
Vehicle accessory sales	-	P	P	-	P	P	
Vehicle sales and service <3 acres	-	P	-	-	P	P	
Vehicle sales and service > 3 acres	-	P	P	-	P	P	
Vehicle storage or impound yard	-	P	-	-	P	P	CC = Hwy 90 only
Parking facility, commercial	-	P	P	P	P	P	
Private transportation service	P	P	P	-	P	P	
Wrecker/Towing Service	-	P	-	-	P	P	CC = Hwy 90 only
Salvage/Junk Yard	-	-	-	-	-	P	Screening required
	CN	CC	CA	CO	LI	GI	

CN – Neighborhood Commercial
 CC – Community Commercial
 CA – Ambassador Cafferey Commercial

CO – Office Commercial
 LI – Light industrial
 GI – General Industrial

Table 10 Commercial and Industrial Districts – Permitted Land Use

P = permitted use - = not permitted

AGRICULTURAL/LIVESTOCK/STABLES

USE	CN	CC	CA	CO	LI	GI	NOTES
Farm (3 acres or less)	P	P	P	-	P	P	
Farm (> 3 acres)	P	P	P	-	P	P	
Shooting Range (indoor)	-	P	P	-	-	-	
Zoo	-	P	P	-	P	P	
Stable	P	P	P	-	P	P	
Rodeo Rink	-	P	P	-	P	P	
Rodeo Rink (non-commercial)	-	P	P	-	P	P	
Race Track	-	-	-	-	-	-	Variance required
Dairy Farm	-	-	-	-	-	-	Variance required
Livestock Facilities	-	P	-	-	P	P	
Chicken Coops (commercial)	-	-	-	-	-	-	
Slaughter House/Processing Plant	-	-	-	-	-	-	
	CN	CC	CA	CO	LI	GI	

CN – Neighborhood Commercial
 CC – Community Commercial
 CA – Ambassador Cafferey Commercial

CO – Office Commercial
 LI – Light industrial
 GI – General Industrial

Table 10 Commercial and Industrial Districts – Permitted Land Use

P = permitted use - = not permitted

MANUFACTURING/RECYCLING

USE	CN	CC	CA	CO	LI	GI	NOTES
Manufacturing Plant/Facility (heavy)	-	-	-	-	-	P	
Manufacturing/assembly (light)	-	P	-	-	P	P	
Cement Plant	-	P	-	-	P	P	CC = Hwy 90 only
Pipeyard/Pipe Cleaning	-	-	-	-	P	P	
Oilfield Equipment Sales/Storage	-	P	-	-	P	P	CC = Hwy 90 only
Metal Working/Welding	-	P	-	-	P	P	
General Metal Fabrication	-	P	-	-	P	P	CC = Hwy 90 only
Recycling collection facility (small)	-	-	-	-	P	P	
Recycling collection/processing facility	-	-	-	-	P	P	
Waste Treatment, Storage, Disposal	-	-	-	-	-	-	Variance required – available in GI only
Sandblasting	-	-	-	-	P	P	Screening required
	CN	CC	CA	CO	LI	GI	

CN – Neighborhood Commercial
 CC – Community Commercial
 CA – Ambassador Cafferey Commercial

CO – Office Commercial
 LI – Light industrial
 GI – General Industrial