

Exhibit N.

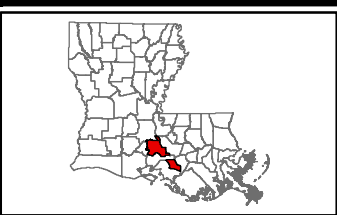
Breaux Bridge I-10 Site Electrical Distribution Infrastructure Map



Breaux Bridge I-10 Site Electrical Distribution Infrastructure Map

Breaux Bridge I-10 Site
St. Martin Parish, LA

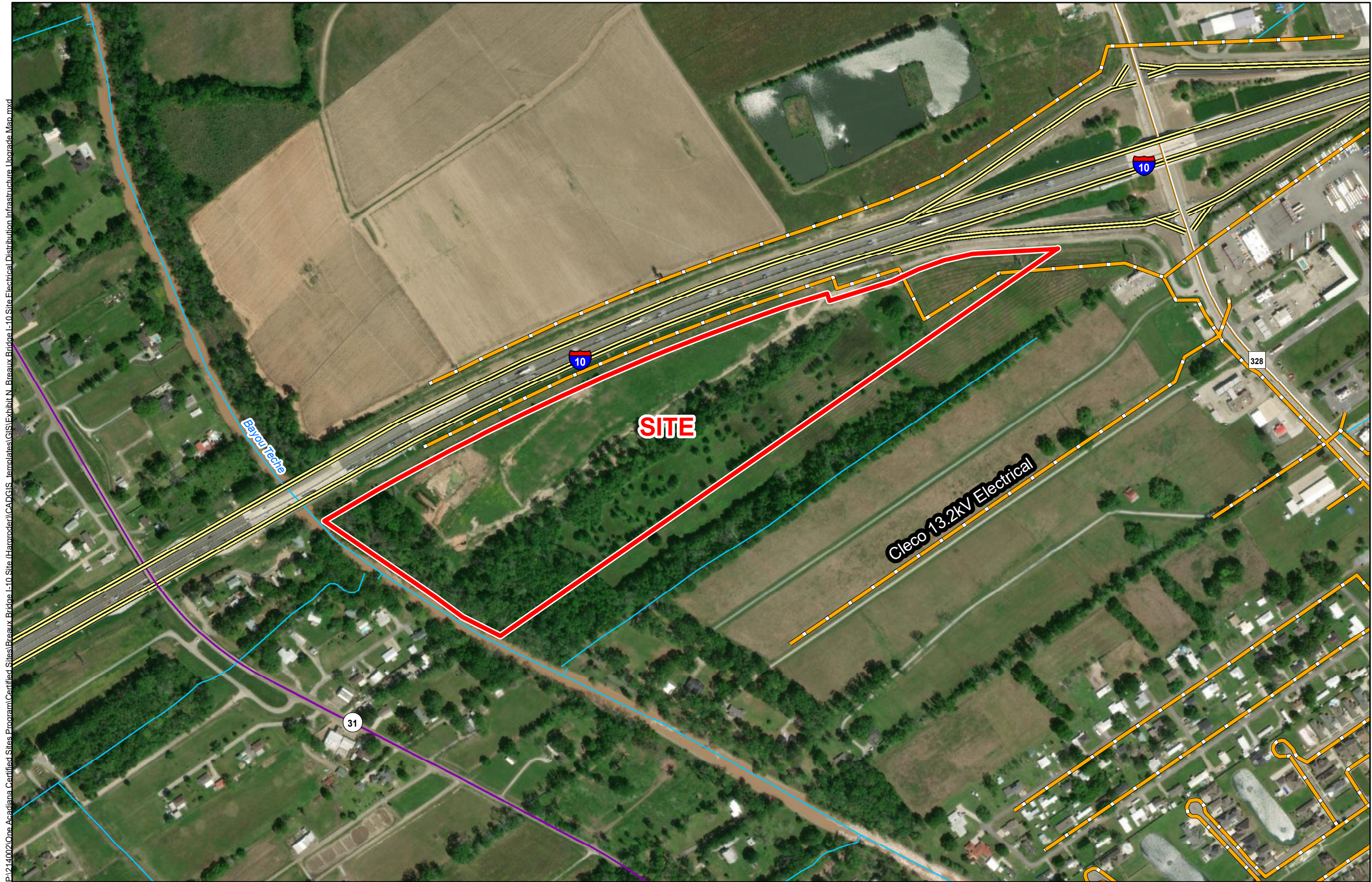
One Acadiana



LEGEND

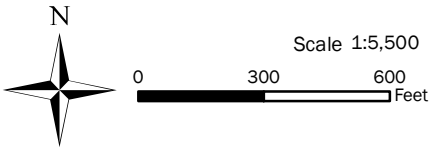
- Site Boundary (43± ac.)
- Cleco 13.2kV Electrical Line
- Stream
- Existing Roadway**
 - Interstate
 - Urban State
 - Rural State Highway

P:\214002\One Acadiana Certified Sites\Breaux Bridge I-10 Site (Harrodan)\CAD\GIS - templates\GIS\Breaux Bridge I-10 Site Electrical Distribution Infrastructure Map.mxd



General Notes:

1. No attempt has been made by CSRS, Inc. to verify site boundary, title, actual legal ownership, deed restrictions, servitudes, easements, or other burdens on the property, other than that furnished by the client or his representative.
2. Transportation data from 2013 TIGER datasets via U.S. Census Bureau at <ftp://ftp2.census.gov/geo/tiger/TIGER2013>.
3. Utility information from visual inspection and/or the individual utility operators. Exact field location has not been determined by survey. The lines shown are an approximate representation only and may have been offset for depiction purposes.
4. 2015 aerial imagery from USDA-APFO National Agricultural Inventory Project (NAIP) and may not reflect current ground conditions.



Date:	11/15/2022
Project Number:	214002
Drawn By:	BMS
Checked By:	EEB

