

Exhibit E.

Spanish Trail Industrial Park Property Rights of Way Exhibit



Spanish Trail Industrial Park Property Rights of Way Exhibit

CSRS

6767 Perkins Road, Suite 200
Baton Rouge, Louisiana 70808
Telephone: 225 769-0546
www.csrsinc.com

Project:

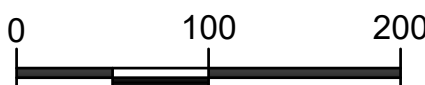
Spanish Trail
Industrial Park
St. Martin Parish, LA

Client:

G:\Logos\lone_acadiana_logo.jpg



SCALE: 1"=100'



Revisions:

#	Date	Description

Key Plan:

LEGEND

- SITE BOUNDARY (49.74 AC. ±)
- ON-SITE RIGHT OF WAY (2.80 AC.±)
- OFF SITE RIGHT OF WAY

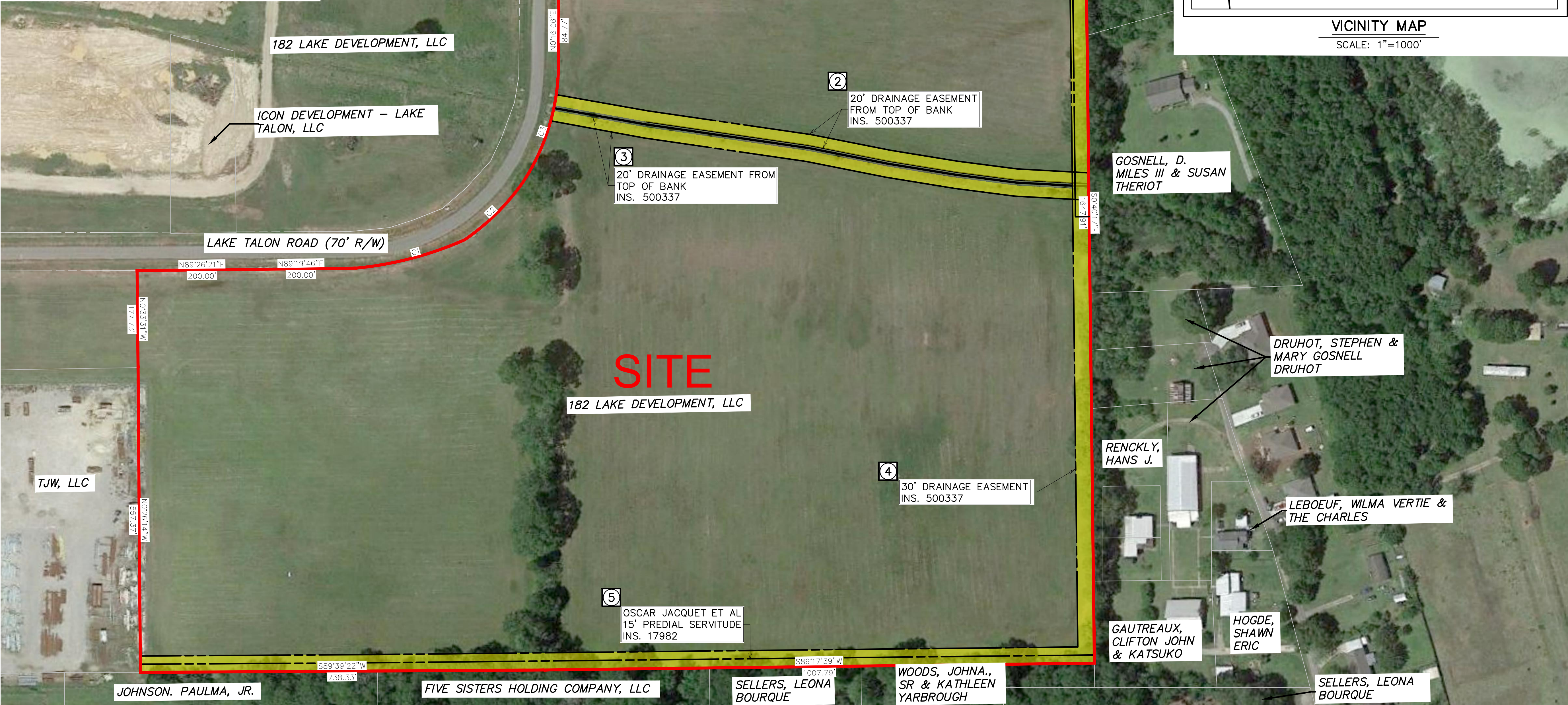
Sheet Title:

Right of Way
Exhibit

Date:	February 2020
Project Number:	214002
Drawn By:	KPH
Checked By:	EEB
Sheet:	

CURVE TABLE					
NUMBER	RADIUS	ARC LENGTH	CHORD DIRECTION	CHORD LENGTH	DELTA ANGLE
C1	373.02'	215.26'	N71°36'18"E	212.29'	33°03'51"
C2	436.75'	136.08'	N41°20'50"E	135.53'	17°51'05"
C3	366.55'	210.63'	N16°43'49"E	207.74'	32°55'25"

SERVITUDE INDEX		
	RIGHT OF WAY/SERVITUDE	ONSITE AREA AFFECTED
1.	THE BRIDGES FAMILY TRUST 25' SERVITUDE	0.47 AC.
2.	20' DRAINAGE EASEMENT	0.44 AC.
3.	20' DRAINAGE EASEMENT	0.44 AC.
4.	30' DRAINAGE EASEMENT	2.33 AC.
5.	OSCAR JACQUET ET AL 15' SERVITUDE	0.60 AC.
	LESS:	1.48 AC.
	TOTAL:	2.80 AC.



GENERAL NOTES:

- No attempt has been made by CSRS, Inc. to verify title, actual legal ownership, deed restrictions, servitudes, easements, or other burdens on the property, other than that furnished by the client or his representative.
- Depicted exhibit based on Livingston Parish Clerk of Court Recordings researched from January 1, 1937 to October 6, 2019.
- This is not a property boundary survey and is not intended to meet the Louisiana standards of practice for property boundary surveys. Bearings and distances of tracts were obtained from document referenced above.
- The coordinate system used is NAD83 Louisiana State Plane South (US feet). Coordinates were derived by overlaying the boundary on an aerial photograph and are within 100' of true location.
- Rights of Way, Easements, and Servitudes shown hereon have not been verified in the field and any shown are for general locative information only.