

EXHIBIT 15
PHASE I CULTURAL RESOURCES SURVEY

**PHASE I CULTURAL RESOURCES SURVEY OF Ca.
43 ACRES ON ENGLAND AIR PARK, ALEXANDRIA,
RAPIDES PARISH, LA**

A Report of Negative Findings (Final Report)



for

England Economic & Industrial Development District
1611 Arnold Drive
Alexandria, LA 71303



Since 1986

SURA, INC.

P.O. Box 14414
Baton Rouge, LA 70898-4414
(225) 381-8201
Surainc.com

**PHASE I CULTURAL RESOURCES SURVEY OF Ca.
43 ACRES ON ENGLAND AIR PARK, ALEXANDRIA,
RAPIDES PARISH, LA**

A Report of Negative Findings (Final Report)

by

Matthew J. Chouest and Malcolm Shuman

Surveys Unlimited

Research Associates, Inc.

P.O. Box 14414

Baton Rouge, Louisiana 70898-4414

for

England Economic & Industrial Development District

1611 Arnold Drive

Alexandria, LA 71303

August 24, 2015

ABSTRACT

On June 13, 2015, SURA, Inc. conducted a Phase I cultural resources survey of a 43 acre (ac) (17.4 hectare [ha]) tract on northeast of England Industrial Airpark, formerly England Air Force Base, Alexandria, Rapides Parish, Louisiana. A total of 248 shovel tests were excavated, all of which were negative. It was concluded that there was no archaeological reason for the tract not to be certified as an industrial site under the Louisiana Department of Economic Development Sites Certification Program.

TABLE OF CONTENTS

ABSTRACT.....	iii
LIST OF FIGURES	ii
LIST OF TABLES.....	iii
ACKNOWLEDGEMENTS.....	iv
CHAPTER ONE: INTRODUCTION.....	1
CHAPTER TWO: ENVIRONMENTAL SETTING.....	2
Soils.....	2
Fauna.....	3
Flora	4
CHAPTER THREE: PREVIOUS INVESTIGATIONS.....	5
CHAPTER FOUR: METHODOLOGY	6
Eligibility for the <i>National Register of Historic Places</i>	6
Curation Statement.....	7
CHAPTER FIVE: RESULTS OF THE SURVEY	8
Archival Research.....	8
Fieldwork	13
CHAPTER SIX: CONCLUSIONS AND RECOMMENDATIONS	17
REFERENCES CITED.....	18

LIST OF FIGURES

Figure 1: Portion of Rapides, Louisiana, 2015 7.5-minute topographic map showing APE.....	1
Figure 2: Soils in the APE and environs (Source: USDA 1971).	2
Figure 3: Portion of Boyce, Louisiana, 1941 15-minute topographic map, showing location of project area.....	9
Figure 4: Portion of Boyce, Louisiana, 1956 15-minute topographic map, showing location of project area.....	10
Figure 5: Portion of Rapides, Louisiana, 1972 7.5-minute topographic map, showing location of project area.....	11
Figure 6: Portion of Rapides, Louisiana, 2003 7.5-minute topographic map, showing location of project area.....	12
Figure 7: Aerial photograph depicting APE with shovel testing transects.	13
Figure 8: Northern portion of APE, looking north.	14
Figure 9: Northern portion of APE, looking east.....	14
Figure 10: Northern portion of APE, looking south.	15
Figure 11: Northern portion of APE, looking west.....	15
Figure 12: Representative shovel test profile for southern portion of APE.....	16
Figure 13: Representative shovel test profile for northern portion of APE.	16

LIST OF TABLES

Table 1: Key to Rapides Parish soil associations (Source: USDA 1971).....	3
---	---

ACKNOWLEDGEMENTS

The authors are indebted to many people who helped during the project. Mr. Kyle Randall helped coordinate this project. Mr. Matthew Chouest served as project manager and was aided by Ms. Billie Jones, Ms. Brandy Kerr, Ms. Margeaux Murray, and Mr. Karl Shuman. Dr. Malcolm Shuman was principal investigator.

CHAPTER ONE: INTRODUCTION

On June 13, 2015, SURA archaeologists conducted a Phase I cultural resources survey of the proposed location of a 43 acre (ac) (17.4 hectare [ha]) tract northeast of England Industrial Airpark, formerly England Air Force Base, Alexandra, Rapides Parish, Louisiana. The project area lies in Sections 30, 31, and 34, T4N, R2W and is shown in Figure 1.

The present work was performed to satisfy the requirements of federal legislation as follow: PL 89-665 (1966), PL 91-190 (1969), and EO 11593 (1971). The work done conforms to the archaeological survey procedures detailed in the Cultural Resources Code of the State of Louisiana. The purpose of the survey was to allow the tract to be certified as a possible industrial location under the Sites Certification Program of the Louisiana Department of Economic Development.

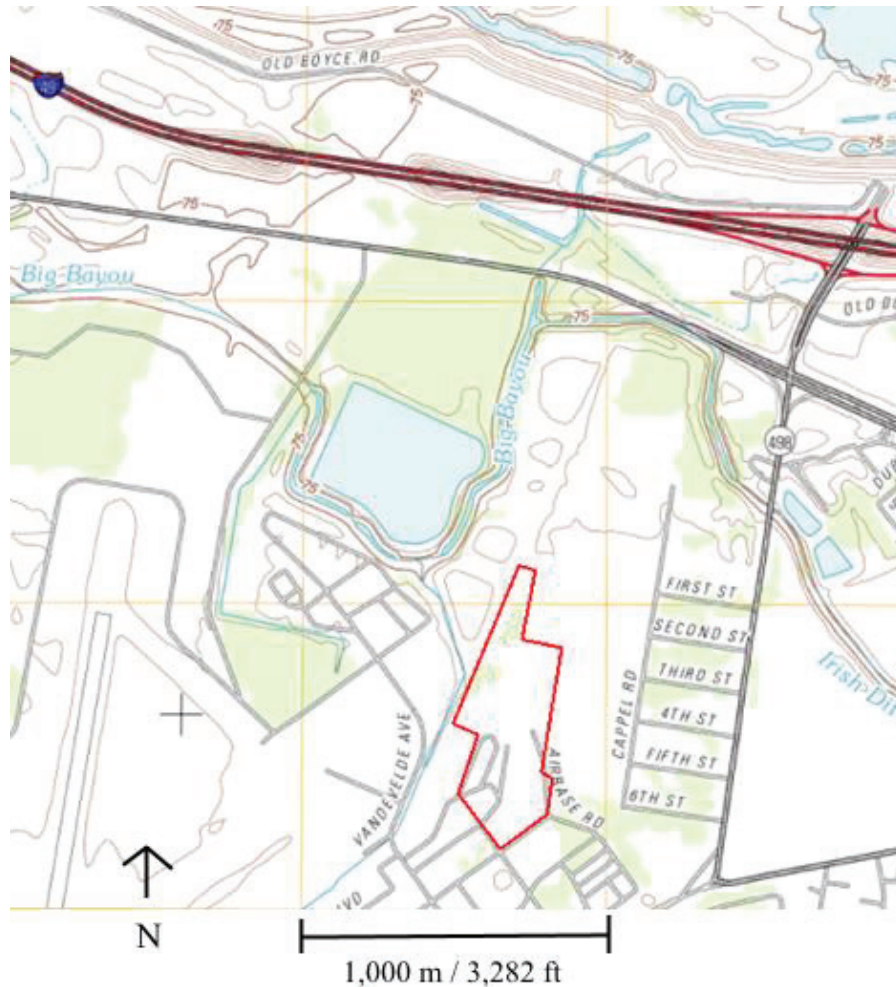


Figure 1: Portion of Rapides, Louisiana, 2012 7.5-minute topographic map showing APE.

CHAPTER TWO: ENVIRONMENTAL SETTING

Soils

The project area is found along the right descending bank of the Red River (USDA 1971) (Figure 2). The soils pertain to the Norwood Association and the Moreland-Latanier Association (Nos. 1 and 3 in Table 1). The former are nearly level, well-drained, alkaline, loamy soils. In a representative profile, the surface layer is usually a reddish brown silt loam, with under layers being reddish brown, calcareous, stratified very fine sandy loam, silty loam and silt clay loam (USDA 1971). These soils are utilized mainly for the cultivation of cotton, soybeans and sugarcane. Moreland-Latanier soils are level to nearly-level, somewhat poorly drained, alkaline and clayey. The surface layer is a dark reddish brown clay and the subsoil is brown, calcareous and silty; in Latanier soils, the subsoil is a light reddish brown loamy layer. These soils are utilized as woodland, pasture and cropland (USDA 1971).

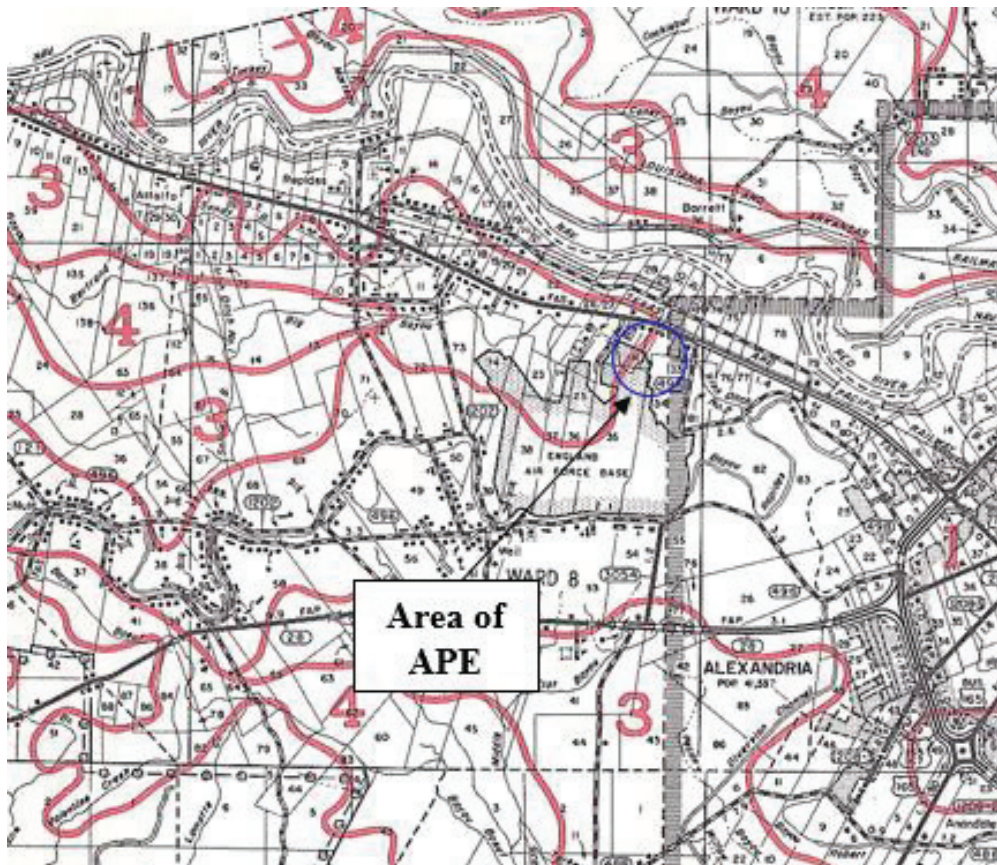


Figure 2: Soils in the APE and environs (Source: USDA 1971).

Table 1: Key to Rapides Parish soil associations (Source: USDA 1971).

No.	Soil Association	Traits
1	Norwood Association	Nearly level, well-drained, alkaline, loamy soils.
2	Gallion Association	Nearly level, well-drained, acid, loamy soils.
3	Moreland-Latanier Association	Level to nearly level, somewhat poorly-drained, alkaline, clayey soils.
4	Moreland Association	Nearly level, somewhat poorly-drained, alkaline, clayey soils.
5	Guyton Association	Level to depressed, poorly-drained, alkaline clayey soils.
6	Beauregard-Caddo Association	Nearly level to very gently sloping, loamy soils.
7	Acadia-Kolin Association	Nearly level to gently sloping soils with clayey subsoils.
8	Gore Association	Gently sloping soils with clayey subsoils.
9	Ruston-Malbis Association	Gently sloping to moderately steep loamy soils.
10	Smithdale Association	Gently sloping to moderately steep well-drained loamy soils.
11	Vaiden-Watsonia Association	Gently sloping to rolling clayey soils.
12	Kisatchie-Cadeville Association	Strongly sloping to hilly, clayey soils.

Fauna

The faunal assemblage is represented by a wide variety of mammals, reptiles and birds, to say nothing of insects. Common mammals are the opossum (*Didelphis virginiana*), armadillo (*Dasypus novemcinctus*), eastern cottontail rabbit (*Sylvilagus floridanus*), raccoon (*Procyon lotor*), red fox (*Vulpes fulva*), gray fox (*Urocyon cinereoargenteus*), bobcat (*Lynx rufus*), coyote (*Canis latrans*), striped skunk (*Mephitis mephitis*), gray squirrel (*Sciurus carolinensis*), beaver (*Castor Canadensis*) and the white-tailed deer (*Odocoileus virginianus*). In precontact times there were certainly black bear (*Euarctos americanus*), red wolf (*Canis rufus*) and cougar (*Felis concolor*), while the armadillo was absent. The reader desiring a more complete description of the mammalian inventory is referred to Lowery (1974).

Reptiles include three types of pit vipers, in the genera *Crotalus* and *Agkistrodon*, the Coral Snake (*Micrurus fulvius*), and a number of innocuous species (Dundee and Rossman 1989).

Birds include the crow (*Corvus brachyrhynchos*), hawks (*Buteo spp.*), various songbirds and a number of game birds. A fuller inventory may be found in Lowery (1955).

Flora

This is an area of predominantly hardwood vegetation, the most frequent species being sweetgum (*Liquidambar styraciflua*), oak (*Quercus spp.*), and hickory (*Carya spp.*). Understory vegetation consists of a wide assortment of vines and briars, including poison oak and ivy (*Rhus spp.*) (Brown 1945).

CHAPTER THREE: PREVIOUS INVESTIGATIONS

Most of the archaeological investigations in this portion of Rapides Parish have occurred in connection with the development of the Red River Waterway (e.g., Hunter 1990 and Hinks et al. 1991). However, other nearby projects have involved proposed highway corridors and bridges (HPG 1981 and Baudoin 1991). One exemplary exception, though almost 14 miles (mi) (22.6 kilometers [km]) to the northwest of the current APE, is John House's salvage project in Lake Rodemacher Basin, which yielded evidence of almost every cultural period in Louisiana from the Late Archaic forward (House 1972).

One of the earliest projects (#22-0497) near the present APE was NLU's survey of one of the proposed alignments for I-49. They passed about 1 mi (1.62 km) north of the present project area. Though they recorded some insignificant sites during their survey, none of these sites were in the area within 1 mi (1.62 km) of the present APE (Heartfield et al. 1978; NLU 1978).

Geo-Marine conducted an assessment (#22-2007) of properties to be used by the Joint Readiness Training Center at England Air Force Base. Of the buildings to be affected, however, none were considered eligible for the National Register of Historic Places (NRHP) (Winchell 1993). The second investigation was CEI/ET/TT's survey of portions of England Air Force Base. The project, involving survey of 65 acres, resulted in the identification of three archaeological sites: McNutt Plantation (16RA692), Oak Isle Plantation (16RA704), and Weil Property (16RA703). All were considered potentially eligible for the NRHP (CEI/ET/TT 1994). A 2011 pipeline study (#22-3559) by Southwestern Resource Analysts (SWCA) passed about 1 mi (1.62 southwest of the current APE; no sites were recorded in that area (King et al. 2011). In 2012, SURA, Inc., conducted a survey of a 31 ac (12.6 ha) proposed heavy industrial site within England Air Park. The survey (#22-4018) recorded no cultural properties (Shuman and Taylor 2012). The same year, Coastal Environments, Inc. (CEI) carried out a 1,249.9 ac (502.4 ha) survey (#22-3951) about 1 mi (1.6 km) northwest of the present survey area. Seven new archaeological sites, all non-significant surface scatters, were recorded (Hunter 2012).

In 2013, Cultural Resource Analysts, Inc. (CRA) surveyed (#22-4311) a proposed 700 ac (282.8) ha tract on the west side of England Airpark. They updated two previously recorded sites (16RA692 and 16RA703) and recorded three new sites (16RA1504, 16RA1605 and 16RA1606). While they concluded that the two previously recorded sites should be avoided, they felt that the three newly recorded sites were likely to be ineligible for the NRHP (Gray et al. 2013). All five sites, it should be mentioned, were historic in nature, dating to the 19th and 20th centuries. In 2014, Gulf South Research Corporation (GSRC) surveyed 53 ac (21.4 ha) within England Airpark. Two archaeological sites and two standing structures were recorded, but none were considered eligible for the NRHP (Lindemuth 2014). Recently, SURA, Inc. carried out a 865 acre survey in January and February of 2015 which identified three minor prehistoric and historic sites denoted 16RA1534, 16RA1535, and 16R1536 (Hoyt 2015).

CHAPTER FOUR: METHODOLOGY

Methodology for the survey included archival research and fieldwork. Archival research included review of relevant archaeological reports and an examination of site files in the Division of Archaeology. Historic maps in the Louisiana State University Cartographic Information Center (CIC) were also consulted. Fieldwork consisted of pedestrian survey and systematic shovel testing. Pedestrian survey consisted of lining up five abreast, at the southern end of the survey area, and proceeding north, along transects spaced 98.4 ft (30 m) apart, with each crew person excavating a shovel test pit every 98.4 ft (30 m). All excavated material was screened using .25 inch hardware cloth. Shovel tests were taken to 50 cm or clay, whichever came first. When archaeological sites are discovered, they are defined using the protocol described in the Louisiana Division of Archaeology Guidelines.

Each cultural resource site found is assessed according to current National Register of Historic Places (NRHP) criteria, as given below.

Eligibility for the *National Register of Historic Places*

According to the *National Register of Historic Places Bulletin* 15 (1995:2), “The quality of significance in American history, architecture, archaeology, engineering, and culture is present in districts, sites, buildings, structures, and objects that possess integrity of location, design, setting, materials, workmanship, feeling, and association are potentially eligible for the *National Register of Historic Places*.” In order to evaluate this significance, four criteria have been developed. Eligible properties...

- “A. ...are associated with events that have made a significant contribution to the broad patterns of our history; or
- B. ... are associated with the lives of persons significant in our past; or
- C. ... embody the distinctive characteristics of a type, period, or method of construction or that represent the work of a master, or that possess high artistic values, or that represent a significant and distinguishable entity whose components may lack individual distinction; or...
- D. ... have yielded, or may be likely to yield, information important in history or prehistory” (NRHP 1995:2).

Curation Statement

Collected material and associated records are curated by the Louisiana Division of Archaeology (DOA) at Upon completion of the project, the artifacts will be delivered to the Louisiana Division of Archaeology, 1835 North Third St. 2nd Floor, Baton Rouge, LA 70802, along with associated records.

CHAPTER FIVE: RESULTS OF THE SURVEY

Archival Research

Archival research indicated seven archaeological sites in the environs of the present project, though not in the current APE. These were 16RA276 (No Name), a 20th-century house site; 16RA277 (No name), a 20th-century barn; 16RA278 (No Name), a 20th-century rural residence; 16RA692 (McNutt Plantation), a 19th-20th-century plantation/house site; 16RA703 (Weil), a 20th-century workers' quarters area; 16RA704 (Oak Isle Plantation), multi-component historic/prehistoric site; and 16RA768 (Tyrone Plantation), a 19th-20th-century plantation. The last four sites are recommended as eligible for the NRHP. Sites 16RA692, 16RA703 and 16RA704 are located on what was formerly England Air Force Base.

Background research also involved the examination of historic topographic maps from the Louisiana State University Department of Geography & Anthropology Cartographic Information Center (CIC). The earliest map is from 1941 and shows the project area as being bounded on the west by Big Bayou and on the north by Irish Ditch (Figure 3). The 1956 map depicts two standing structures and a railroad track on the northern boundary of the project area. It also, for the first time, shows England Air Force Base (Figure 4). The base opened in 1942, as Alexandria Army Air Base. Its name was changed to England Air Force Base in 1955, in honor of Lt. Col. John England, who died in an air crash in France. The base was closed in 1992 (www.englandairforcebase.info). By the time of the 1972 map (Figure 5), a great deal of structures have been constructed throughout the project area as well as an indication of tanks. By the creation of the 2003 map (Figure 6), all of the structures on the northern side of the map have been demolished. Four structures remain in the APE and are uninhabited.



Figure 3: Portion of Boyce, Louisiana, 1941 15-minute topographic map, showing location of project area.



Figure 4: Portion of Boyce, Louisiana, 1956 15-minute topographic map, showing location of project area.

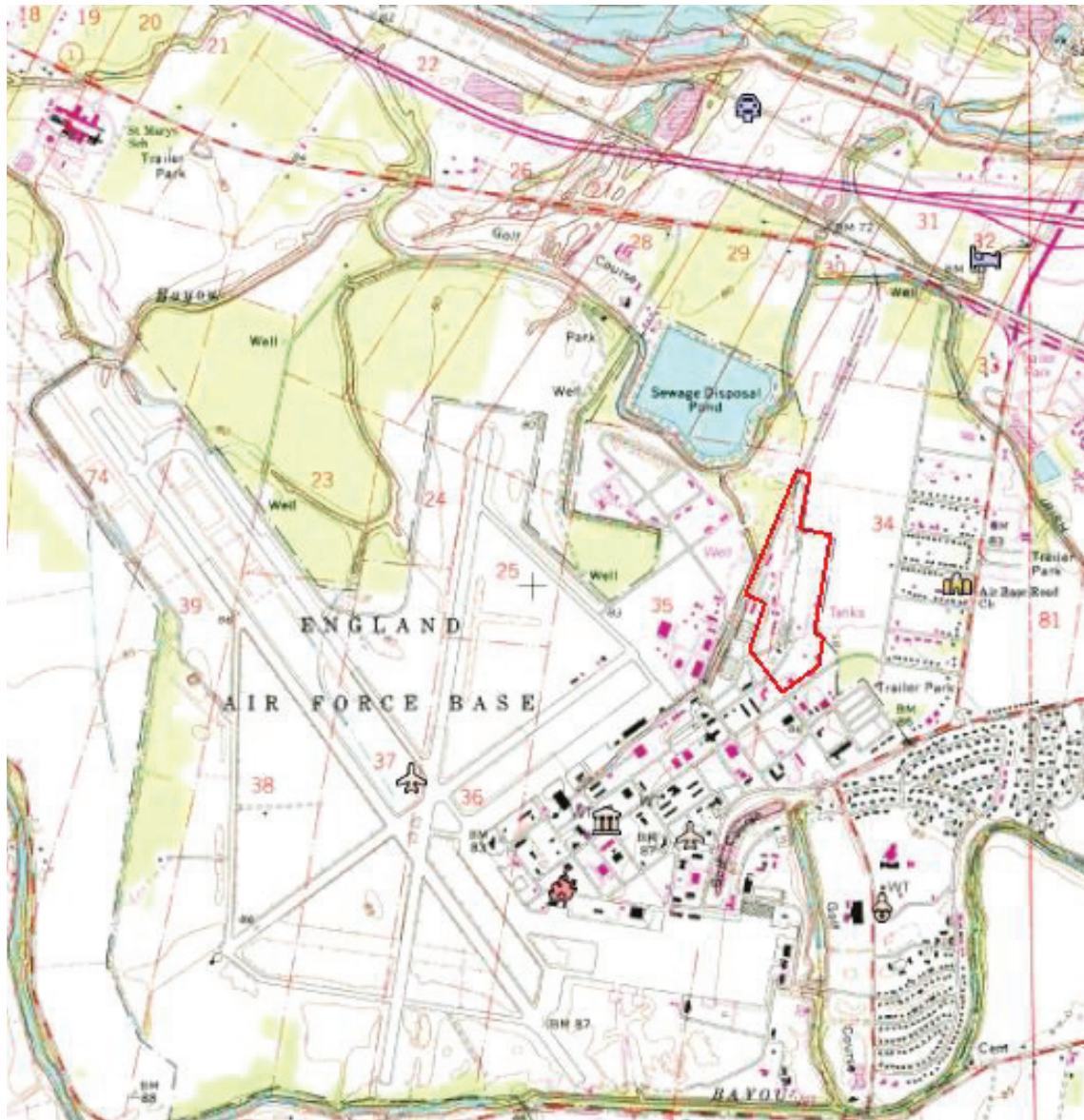


Figure 5: Portion of Rapides, Louisiana, 1972 7.5-minute topographic map, showing location of project area.



Figure 6: Portion of Rapides, Louisiana, 2003 7.5-minute topographic map, showing location of project area.

Fieldwork

Field survey was conducted on June 15, 2015. The entire APE was surveyed using a HP protocol of shovel testing (Figure 7). Figures 8-11 are field photographs showing the APE from ground level.



Figure 7: Aerial photograph depicting APE with shovel testing transects.



Figure 8: Northern portion of APE, looking north.



Figure 9: Northern portion of APE, looking east.



Figure 10: Northern portion of APE, looking south.



Figure 11: Northern portion of APE, looking west.

None of the shovel tests in the APE were positive for cultural remains and many indicated profound disturbance of the land surface. This disturbance is due to the storage of chemical in tanks (which were later moved) and the destruction of the previous structures. In general, shovel tests in the southern part of the APE revealed a disturbed sandy loam containing gravel overlying a sandy clay stratum (Figure 12). The northern part of the APE showed signs of lesser disturbance, with a sandy clay layer above exclusively clay to at least 50 cmbs (Figure 13).

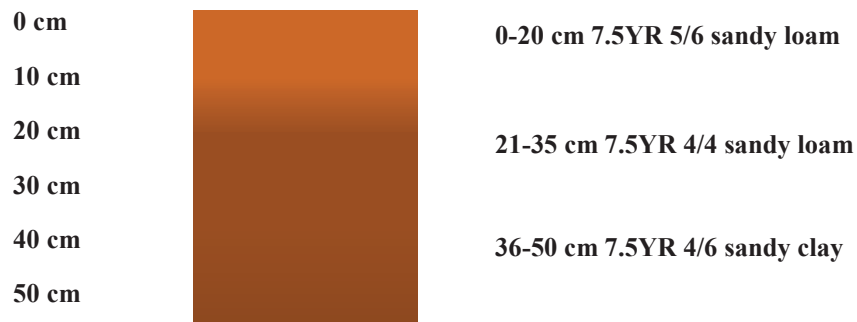


Figure 12: Representative shovel test profile for southern portion of APE.

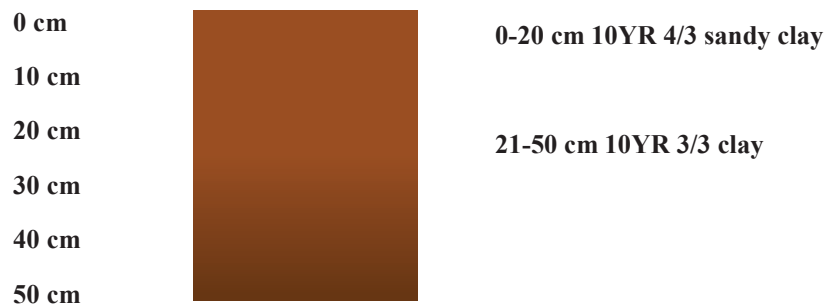


Figure 13: Representative shovel test profile for northern portion of APE.

Save for contemporary trash, the APE showed no indications of containing cultural resources.

CHAPTER SIX: CONCLUSIONS AND RECOMMENDATIONS

SURA, Inc., conducted a Phase I cultural resources survey of a 40.3 ac (16.3 ha) tract at England Air Park, Alexandria, Rapides Parish, Louisiana. No cultural resources were recorded and SURA concludes that there are unlikely to be properties eligible for the NRHP in the current APE. SURA, Inc., recommends that the project be allowed to proceed as planned. A total of 248 shovel tests were excavated.

REFERENCES CITED

Anderson, David G., J.W. Joseph and Mary Beth Reed

- 1988 *Technical Synthesis of Cultural Resource Investigations, Fort Polk, Louisiana*. National Park Service, Atlanta, GA, and on file with the Louisiana Division of Archaeology.

Baoudoin, Angela

- 1991 *Cultural Resources Survey, Rapides Bayou Bridge at Weill, Rapides Parish, Louisiana*. Unpublished report on file with the Louisiana Division of Archaeology, Baton Rouge.

Brown, Clair A.

- 1945 *Louisiana Trees and Shrubs*. Louisiana Forestry Commission, Bulletin No. 1. Baton Rouge.

CEI/ET/TT (Coastal Environments, Inc., The Earth Technology Corporation, and Tetra Tech, Inc.)

- 1994 *Cultural Resources Investigation of England Air Force Base, Louisiana*. Unpublished report on file with the Louisiana Division of Archaeology, Baton Rouge.

Dundee, Harold A. and Douglas A. Rossman

- 1989 *The Amphibians and Reptiles of Louisiana*. Louisiana State University Press: Baton Rouge.

Eakin, Sue Lyles

- 1987 *Rapides Parish: An Illustrated History*. Windsor Publications, Northridge, California.

Gibson, Jon L

- 1982 The Troyville-Baytown Issue. *Louisiana Archaeology* 9:29-62.
- 1994 Before their time? Early Mounds in the Lower Mississippi Valley. *Southeastern Archaeology* 13(2)162-186.

Gray, Jay W., Benjamin J. Bilgri; Jeremy Pye; and Paul D. Bundy

- 2013 *Exhibit 17-Cultural Resource Survey, A Cultural Resource Survey of the Proposed 700-Acre Development of England Airpark Site W-1*. Unpublished report on file with the Louisiana Division of Archaeology, Baton Rouge.

Gregory, Hiram F., Clint Pine, Terry Jones, Darryl Pleasant and Jared Jones

- 1989 *An Archaeological Survey of the Lower Dugdemona River, Winn Parish, Louisiana, 1989*. Unpublished report submitted to the State of Louisiana,

Department of Culture, Recreation and Tourism, Division of Archaeology and on file with that office.

Hahn, Thurston H. G. III, Jerame Cramer, Tara M. Bond, Richard Mahoney, Carey Coxe, Wayne Coco, Julie Doucet, and Richard A. Weinstein

- 2003 *From Ploup to Vaughn Creek, a Cultural Resources Survey for the Proposed St. Francisville Bridge (State Project 700-28-0022), Pointe Coupee and West Feliciana Parishes, Louisiana.* Unpublished report on file with the Louisiana Division of Archaeology, Baton Rouge.

Heartfield, Lorraine, Kay Hudson, G. R. Dennis Price, Steven Mitcham, H. E. Jackson and Glenn S. Greene

- 1978 *A Cultural Resource Survey and Evaluation of the Opelousas to Shreveport Portion of the Proposed North-South Expressway: Phases I and II. 3 Vols. St. Landry, Rapides, Evangeline, Avoyelles Parishes, Louisiana.* Unpublished report on file with the Louisiana Division of Archaeology, Baton Rouge.

Hinks, Stephen, Paul V. Heinrich, Ralph Draughon, Jr., Susan Barrett Smith, Jennifer A. Cohen, William P. Athens, April M. Fehr, William A. Morgan, and James M. Wojtala

- 1991 *Survey and Testing of Thirteen Items on the Red River Waterway, Louisiana.* Unpublished report for the U.S. Army Corps of Engineers on file with the Louisiana Division of Archaeology, Baton Rouge.

HPG (Heartfield, Price and Greene, Inc.)

- 1981 *A Cultural Resources Survey and Evaluation of Alignment A between Stations 650 and 900, and a Portion of Alignment within Urban Alexandria. An Amendment of a Cultural Resources Survey and Evaluation for the Opelousas to Shreveport Portion of the Proposed North-South Expressway.* Unpublished report on file with the Louisiana Division of Archaeology, Baton Rouge.

House, John H.

- 1972 *Archaeological Salvage in the Basin of Lake Rodemacher, Rapides Parish, Louisiana.* Unpublished report on file with the Louisiana Division of Archaeology, Baton Rouge.

Hoyt, Jon M. and Malcolm K. Shuman

- 2015 *Phase I Cultural Resources Survey of the England Site W2, Alexandria, Rapides Parish, Louisiana.* Unpublished report on file with the Louisiana Division of Archaeology, Baton Rouge.

Hunter, Donald G.

- 1990 *Cultural Resources Investigations for the MoPac and Alexandria Front Revetment Phase II Areas, Red River Waterway, Rapides Parish, Louisiana.* Unpublished report on file with the Louisiana Division of Archaeology, Baton Rouge.

- 2012 *Phase I Cultural Resources Investigations Relating to the Proposed Sundrop Fuels Plant Facility, Rapides Station, Rapides Parish, Louisiana*. Unpublished report on file with the Louisiana Division of Archaeology, Baton Rouge.

King, Allison, Rebecca Mehok, Andrew Roberts and Tim Roberts

- 2011 *Phase I Archaeological Survey of Portions of the 268-Mile Acadian Haynesville Extension Project*. Unpublished report on file with the Louisiana Division of Archaeology, Baton Rouge.

LDOA (Louisiana Division of Archaeology)

n.d. Site Files: Rapides Parish

Lindemuth, John F.

- 2014 *Phase I Cultural Resources Survey for the Proposed England Airpark Clearing and Grubbing for Wildlife Hazards Control*. Unpublished report on file with the Louisiana Division of Archaeology, Baton Rouge.

Lowery, George H., Jr.

- 1955 *Louisiana Birds*. Louisiana State University Press: Baton Rouge.
- 1974 *The Mammals of Louisiana and its Adjacent Waters*. Louisiana State University Press: Baton Rouge.

NLU (Northeast Louisiana University)

- 1978 *Archaeological Survey of Alignment A from a Point Just South of Alexandria to Boyce, Rapides; and Approx. 10 Miles of Realignment near 16NA64, Natchitoches: An Amendment to a Cultural Resources Survey and Evaluation of the Opelousas to Shreveport North-South Expressway*. Unpublished report on file with the Louisiana Division of Archaeology, Baton Rouge.

NRHP (National Register of Historic Places)

- 1995 *How to Apply the National Register Criteria for Evaluation*. National Register Bulletin No. 15. National Park Service, Washington, D.C.

Shuman, Malcolm K. and Phillip K. Taylor

- 2012 *Phase I Cultural Resources Survey of the Proposed Location of the England Heavy Industrial Site, England Airpark, Rapides Parish, Louisiana (Negative Findings)*. Unpublished report on file with the Louisiana Division of Archaeology, Baton Rouge.

USDA (United States Department of Agriculture)

- 1971 *Parish General Soil Maps: Rapides Parish*. USDA, Alexandria, La.

Whelan, James Patrick, Jr., and Charles E. Pearson

- 1988 *Archaeology of an Early Twentieth Century Community: The Goodland Cypress Sawmill Company, Terrebonne Parish, Louisiana*. Unpublished report for the

Louisiana Department of Transportation and Development and on file with the Louisiana Division of Archaeology, Baton Rouge.

Whittington, G. P.

- 1935 *Rapides Parish Louisiana: A History*. Reprinted from *Louisiana Historical Quarterly* by the Alexandria Committee of the National Society of the Colonial Dames of Louisiana, Alexandria, Louisiana.

Williamson, Frederick William and George T. Goodman (editors)

- 1939 *Eastern Louisiana: A History of the Ouachita River and the Florida Parishes*. 3 vols. The Historical Record Association, Louisville, Kentucky.

Winchell, Frank

- 1993 *Cultural Resources Assessment of a Proposed Intermediate Staging Base, and Forward Operating Location in Louisiana for the Joint Readiness Training Center*. Unpublished report on file with the Louisiana Division of Archaeology, Baton Rouge.

Maps

Boyce, La. 1941 15-Minute topographic sheet. U.S. Geological Survey. In LSUCIC, Baton Rouge.

Boyce, La. 1956 15-Minute topographic sheet. U.S. Geological Survey. In LSUCIC, Baton Rouge.

Rapides, La. 1972 7.5-Minute topographic sheet. U.S. Geological Survey. In LSUCIC, Baton Rouge.

Rapides, La. 1992 7.5-Minute topographic sheet (Photo Revised). U.S. Geological Survey. In LSUCIC, Baton Rouge.

Rapides, La. 2003 7.5-Minute topographic sheet. U.S. Geological Survey. In LSUCIC, Baton Rouge.

Rapides, La. 2012 7.5-Minute topographic sheet. U.S. Geological Survey. In LSUCIC, Baton Rouge.