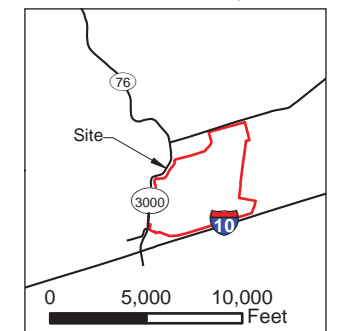
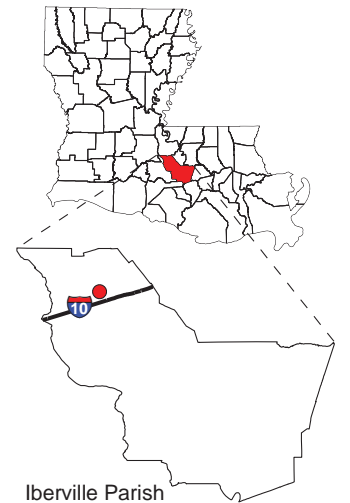


# Exhibit Y. Grace Farms East All Utilities Infrastructure Site Map

Project:  
 Grace Farms East  
 Iberville Parish, LA

Client:  
 BRAC

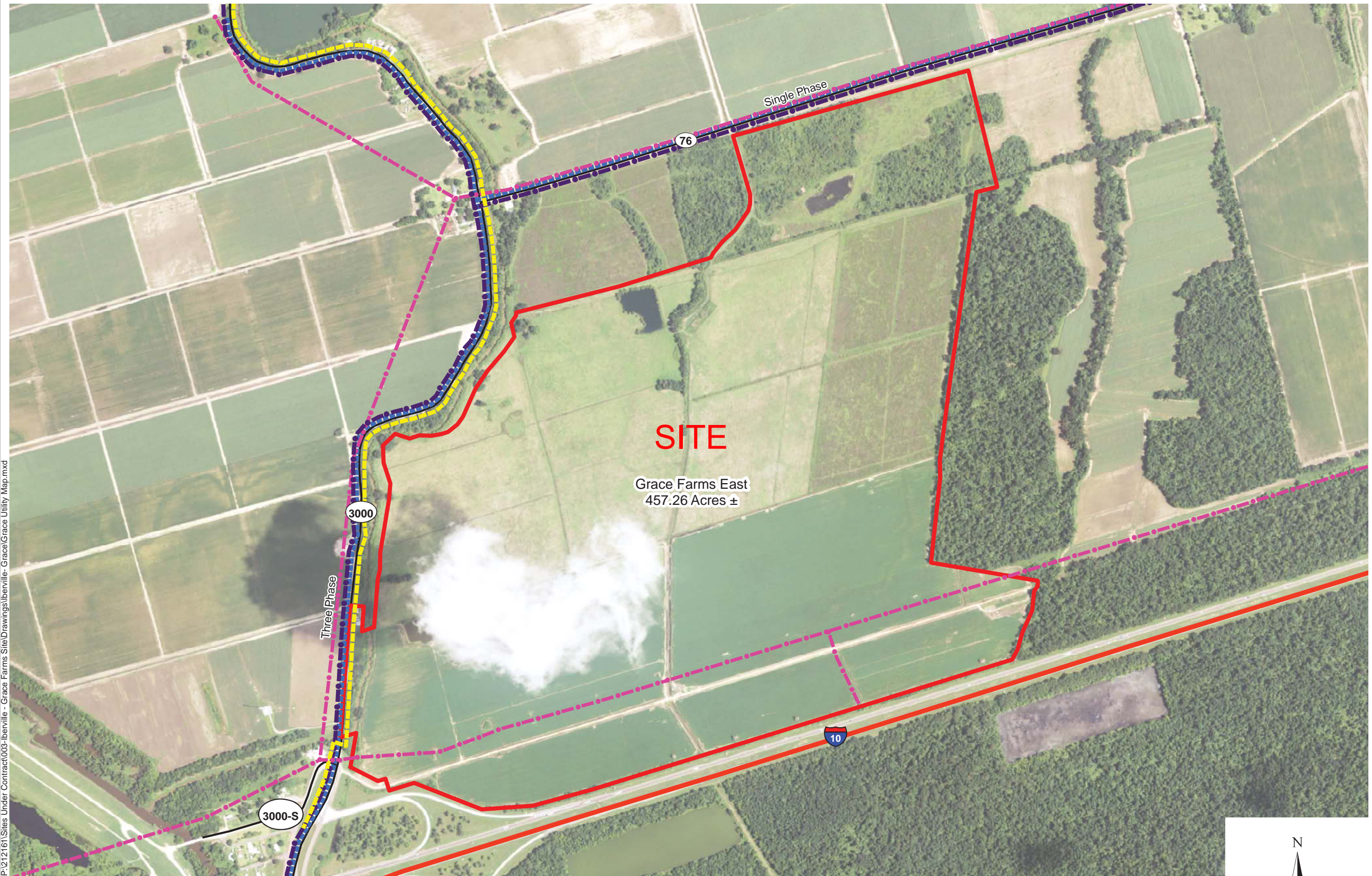


- Legend:**
- - - Powerline
  - - - 3" Natural Gas
  - - - Telecom
  - - - 6" Water Line
  - Interstate Highway
  - State Roads
  - Site Boundary

Baton Rouge Area Chamber.

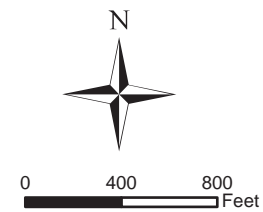
Source:  
 GIS features acquired from public domain state and federal data sources (GNIS, LOSCO, US Census Bureau).  
 Imagery: 2010 USDA NAIP

Date:	5/22/2013
Project Number:	212161.20.003
GIS Analyst:	JAY
Checked By:	TMG



**SITE**  
 Grace Farms East  
 457.26 Acres ±

- GENERAL NOTES:**
1. Water line is operated by Iberville Parish Utilities and is located on the west side of LA 3000 and the north side of LA 76 approximately 25' from the centerline of the road.
  2. Telephone line is operated by Star Telephone Co. and is located on the west side of LA 3000 and the south side of LA 76 approximately 30' from the centerline of the road.
  3. Gas line is operated by Iberville Parish Utilities.
  4. Portions of power line is operated by Pointe Coupee Electric Membership Corporation and portions are operated by Entergy.
  5. Exact field locations of utilities has not been determined . The lines shown are an approximate representation and are for general locative information only.



**CSRS**  
 IMAGINE SHAPE DELIVER

6767 Perkins Road Suite 200 Baton Rouge, LA 70808  
 Telephone: 225 769-0546 Fax: 225 767-0060  
 www.csrsonline.com

P:\212161\Sites Under Contract\003-Iberville - Grace Farms Site\Drawings\Iberville - Grace Farms Utility Map.mxd