

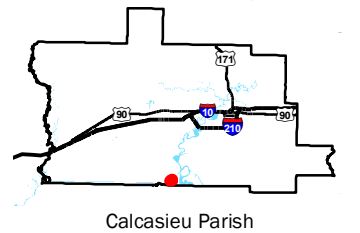
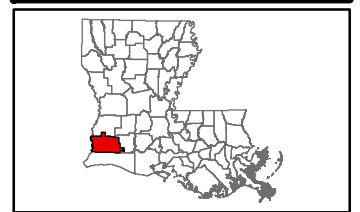


Exhibit O. West Calcasieu Port Site Electrical Transmission Infrastructure Map

West Calcasieu Port Site Electrical Transmission Infrastructure Map

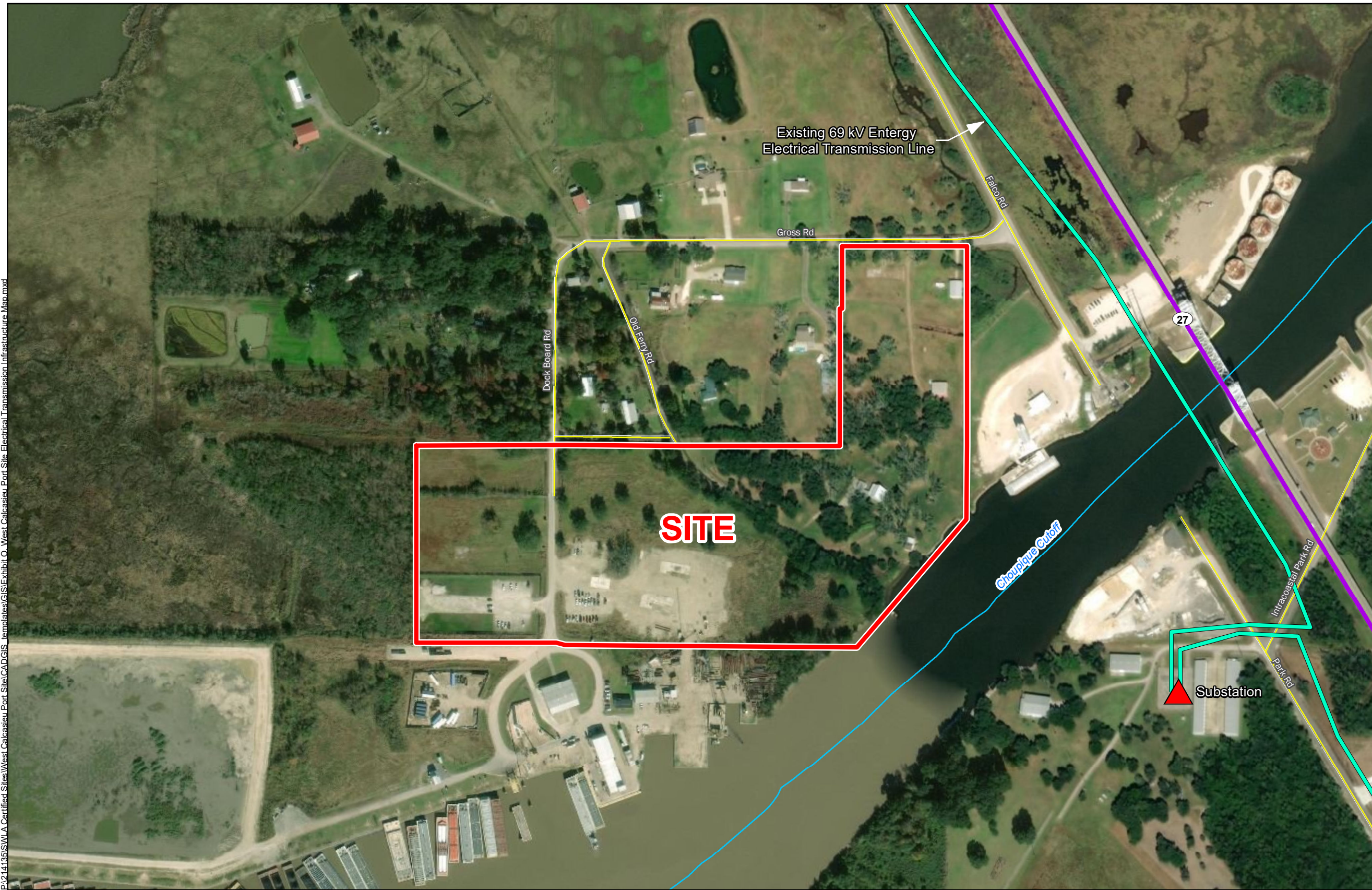
West Calcasieu Port Site
Calcasieu Parish, LA

SWLA



LEGEND

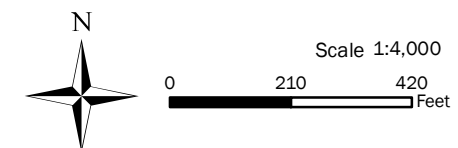
- Site Boundary
- Existing 69 kV Entergy Electrical Transmission Line
- ▲ Substation
- Existing Roadway**
- 4-Lane State Highway
- Local
- Stream



P:\214135\SWLA Certified Sites\West Calcasieu Port Site\CAD\GIS Templates\GIS\Exhibit O - West Calcasieu Port Site Electrical Transmission Infrastructure Map.mxd

General Notes:

1. No attempt has been made by CSRS, Inc. to verify site boundary, title, actual legal ownership, deed restrictions, servitudes, easements, or other burdens on the property, other than that furnished by the client or his representative.
2. Transportation data from 2013 TIGER datasets via U.S. Census Bureau at <ftp://ftp2.census.gov/geo/tiger/TIGER2013>.
3. Utility information from visual inspection and/or the individual utility operators. Exact field location has not been determined by survey. The lines shown are an approximate representation only and may have been offset for depiction purposes.
4. 2015 aerial imagery from USDA-APFO National Agricultural Inventory Project (NAIP) and may not reflect current ground conditions.



Date: 10/31/2019
Project Number: 214135
Drawn By: BNF
Checked By: EEB

