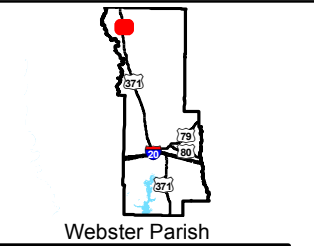
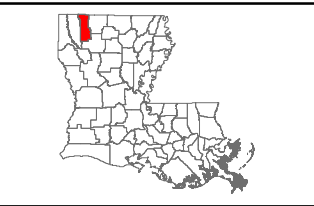


Exhibit M. North Webster Parish Industrial District Site Local Product Pipelines Map

Local Product Pipelines
NWPID Site
Webster Parish, LA

NWPID



Legend

Site Boundary
(61.33 Acres +/-)

Commodity Type

Natural Gas

Existing Roadway

US Highway

Local Roads

Railroad



**NORTH WEBSTER PARISH
INDUSTRIAL DISTRICT**

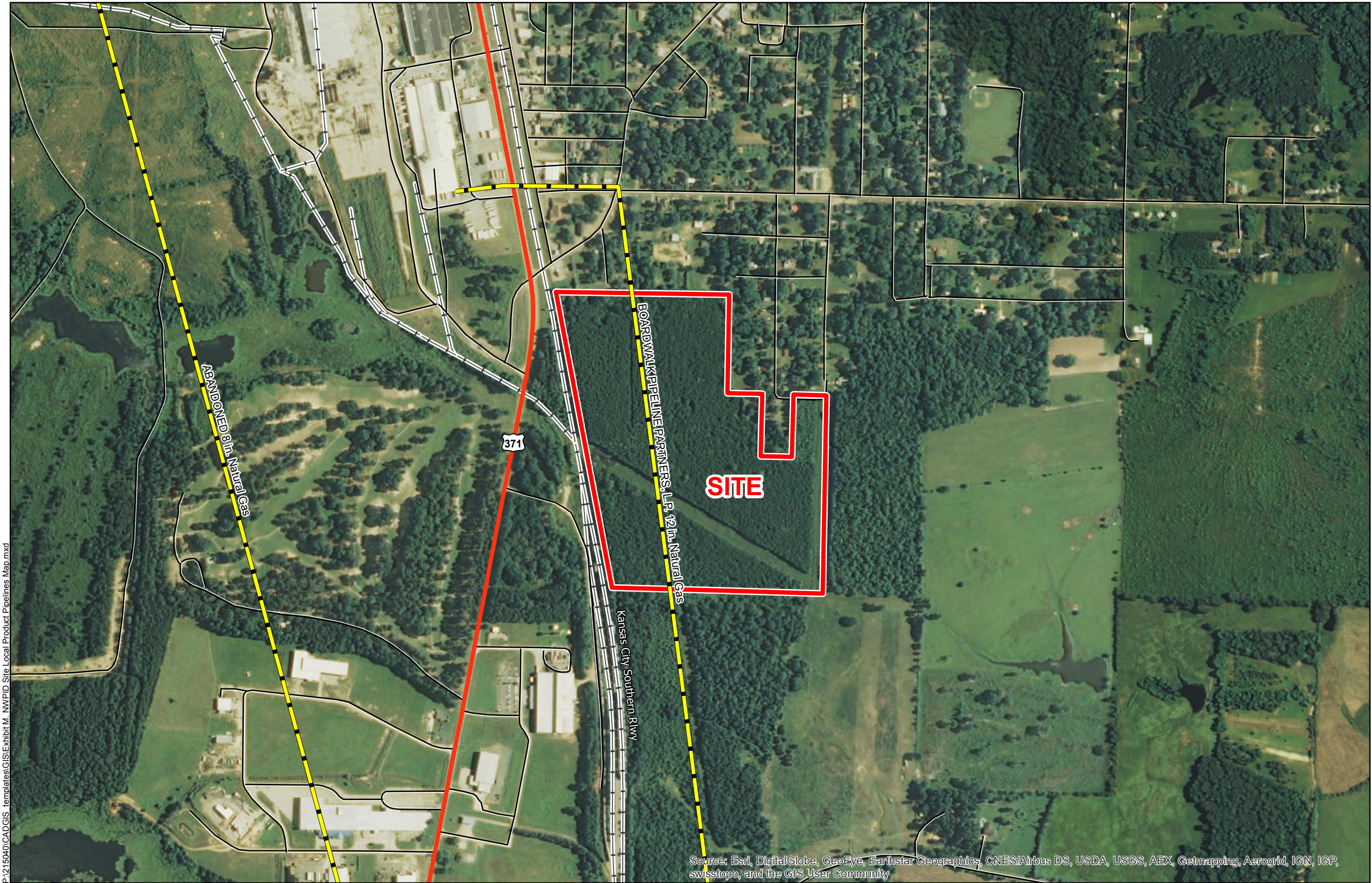
Date: 10/6/2015

Project Number: 215040

Drawn By: AMB

Checked By: JAY

CSRS
IMAGINE SHAPE DELIVER
6767 Perkins Road Suite 200 Baton Rouge, LA 70808
Telephone: 225 769-0546 Fax: 225 767-0060
www.csrsonline.com



P:\215040\CAD\GIS templates\GIS\Exhibit M. NWPID Site Local Product Pipelines Map.mxd

General Notes:

1. No attempt has been made by CSRS, Inc. to verify site boundary, title, actual legal ownership, deed restrictions, servitudes, easements, or other burdens on the property, other than that furnished by the client or his representative.
2. Transportation data from 2013 TIGER datasets via U.S. Census Bureau at <ftp://ftp2.census.gov/geo/tiger/TIGER2013>.
3. Pipeline information from IHS, Inc. and is current as of 12/2013. Product types in individual lines can vary and products represented here are current as of the publication of this exhibit, but may change depending on the demands and requirements of each system. Exact field location has not been determined by survey. The lines shown are an approximate representation only and may have been offset for depiction purposes.

Source: Esri, DigitalGlobe, GeoEye, Earthstar Geographics, CNES/Airbus DS, USDA, USGS, AEX, Getmapping, Aerogrid, IGN, IGP, swisstopo, and the GIS User Community



Scale 1:8,000
0 425 850 Feet