

Exhibit P. Moseley North Site Roadway Transportation Infrastructure Map

Local Transportation Infrastructure
Moseley North Site
Pointe Coupee Parish, LA

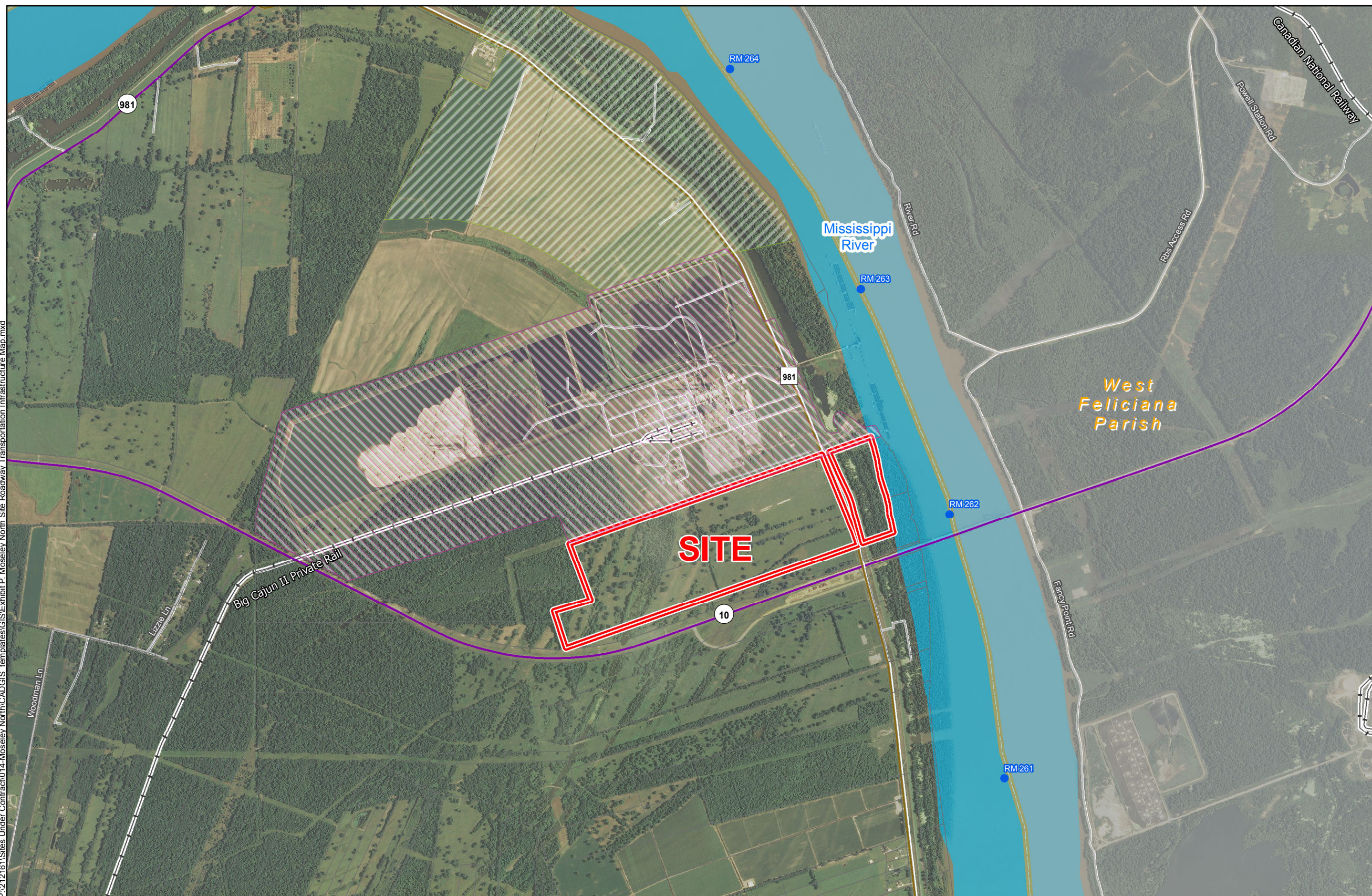
BRAC



Pointe Coupee Parish

LEGEND

- Site Boundary (304.24 Acres +/-)
- NRG Big Cajun II Plant
- River Mile Marker
- LED Certified Site (NRG Site)
- Existing Roadway**
 - Urban State Highway
 - Rural State Highway
 - Local Roads
 - Railroad
 - Waterbody
 - Parish Boundary



P:\212161\Sites Under Contract\014-Moseley North\CAD\GIS templates\GIS\Exhibit P. Moseley North Site Roadway Transportation Infrastructure Map.mxd

General Notes:

1. No attempt has been made by CSRS, Inc. to verify site boundary, title, actual legal ownership, deed restrictions, servitudes, easements, or other burdens on the property, other than that furnished by the client or his representative.
2. Transportation data from 2013 TIGER datasets via U.S. Census Bureau at [ftp://ftp2.census.gov/geo/tiger/TIGER2013](http://ftp2.census.gov/geo/tiger/TIGER2013).
3. 2013 aerial imagery from USDA-APFO National Agricultural Inventory Project (NAIP) and may not reflect current ground conditions.



Scale 1:25,000
0 1,300 2,600 Feet



Date: 8/10/2015
Project Number: 212161.20.012
Drawn By: MMS
Checked By: TMG

CSRS
IMAGINE SHAPE DELIVER
6767 Perkins Road Suite 200 Baton Rouge, LA 70808
Telephone: 225 769-0546 Fax: 225 767-0060
www.csronline.com