

Exhibit G. Tamanend Business Park East Site Property Rights Exhibit



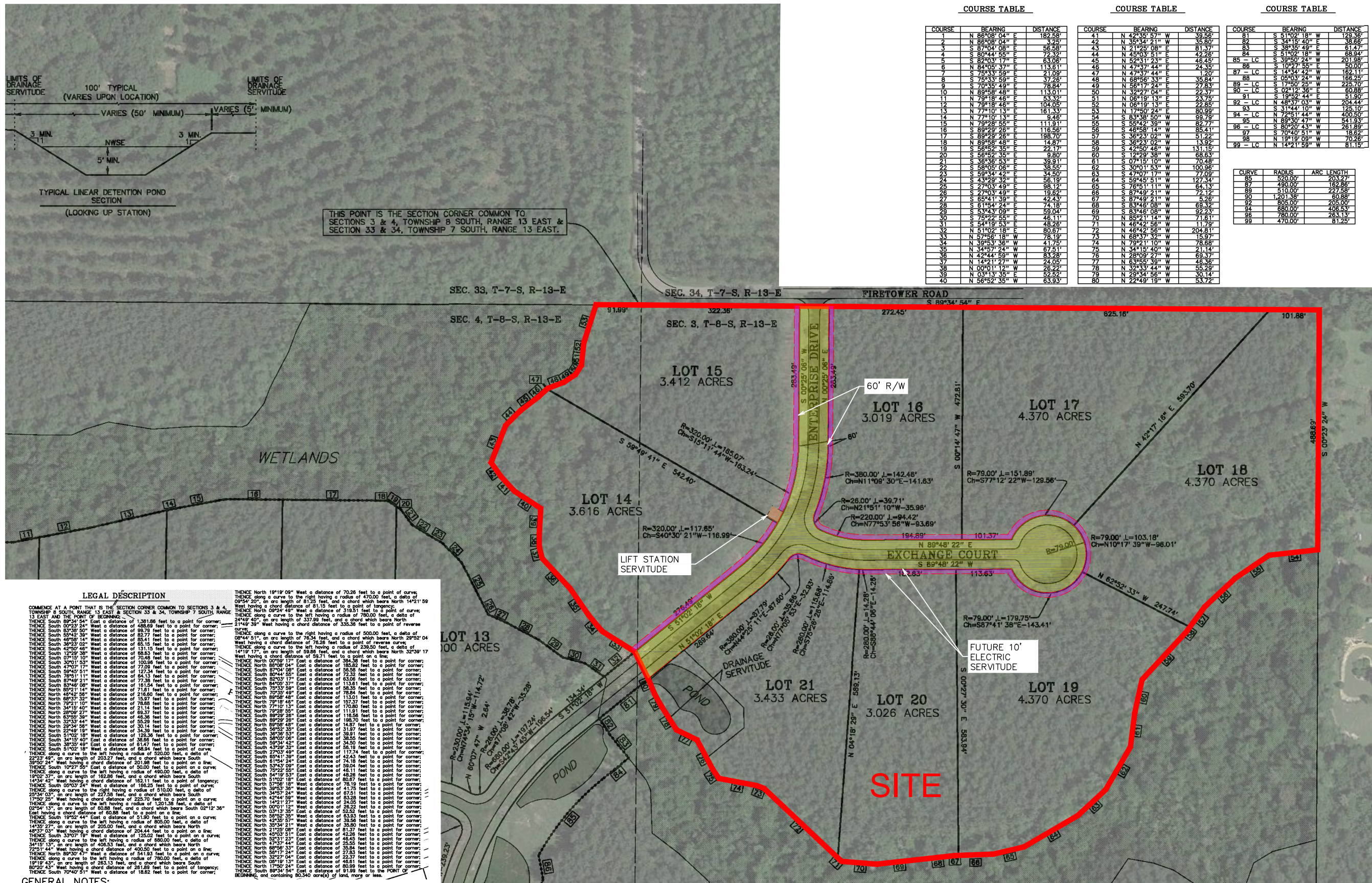
Tamanend Business Park East Site Property Rights Exhibit

Project





**Tamanend East Site
St. Tammany Parish, LA**

Client

St. Tammany Economic Development Foundation



LEGEND

	SITE BOUNDARY (31.86 AC. ±)
	R/W (2.25 AC. ±)
	SERVITUDE (.01 AC. ±)
	FUTURE ELECTRIC SERVITUDE (.59 AC. ±)

<div> <div>Sheet Title</div> <div> <div>Property Rights Exhibit</div> </div> </div>	
Date:	June 2016
Project Number:	21409
Drawn By:	TMM
Checked By:	JA
Sheet:	

GENERAL NOTES:

1. No attempt has been made by CSRS, Inc. to verify title, actual legal ownership, deed restrictions, servitudes, easements, or other burdens on the property, other than that furnished by the client or his representative.
2. Depicted exhibit based on a preliminary survey of Tamanend Business Park Sections 3 & 4 T-8-S R-13-E, Greensburg Land District, St. Tammany Parish, Louisiana by Kelly J. McHugh & Assoc. dated July 23, 2014.
3. This is not an official property boundary survey and is not intended to meet the Louisiana standards of practice for property boundary surveys. Bearings and distances of tracts were obtained from document referenced above.
4. The coordinate system used is NAD83 Louisiana State Plane South (US feet). Coordinates were derived by overlaying the boundary on an aerial photograph and are within 100' of true location.
5. Actual location and acreage of future electric servitude contingent on future servitude agreement with Cleco Power, LLC.

