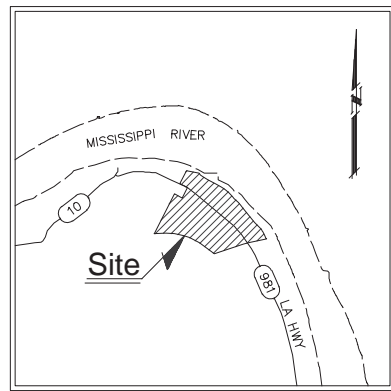


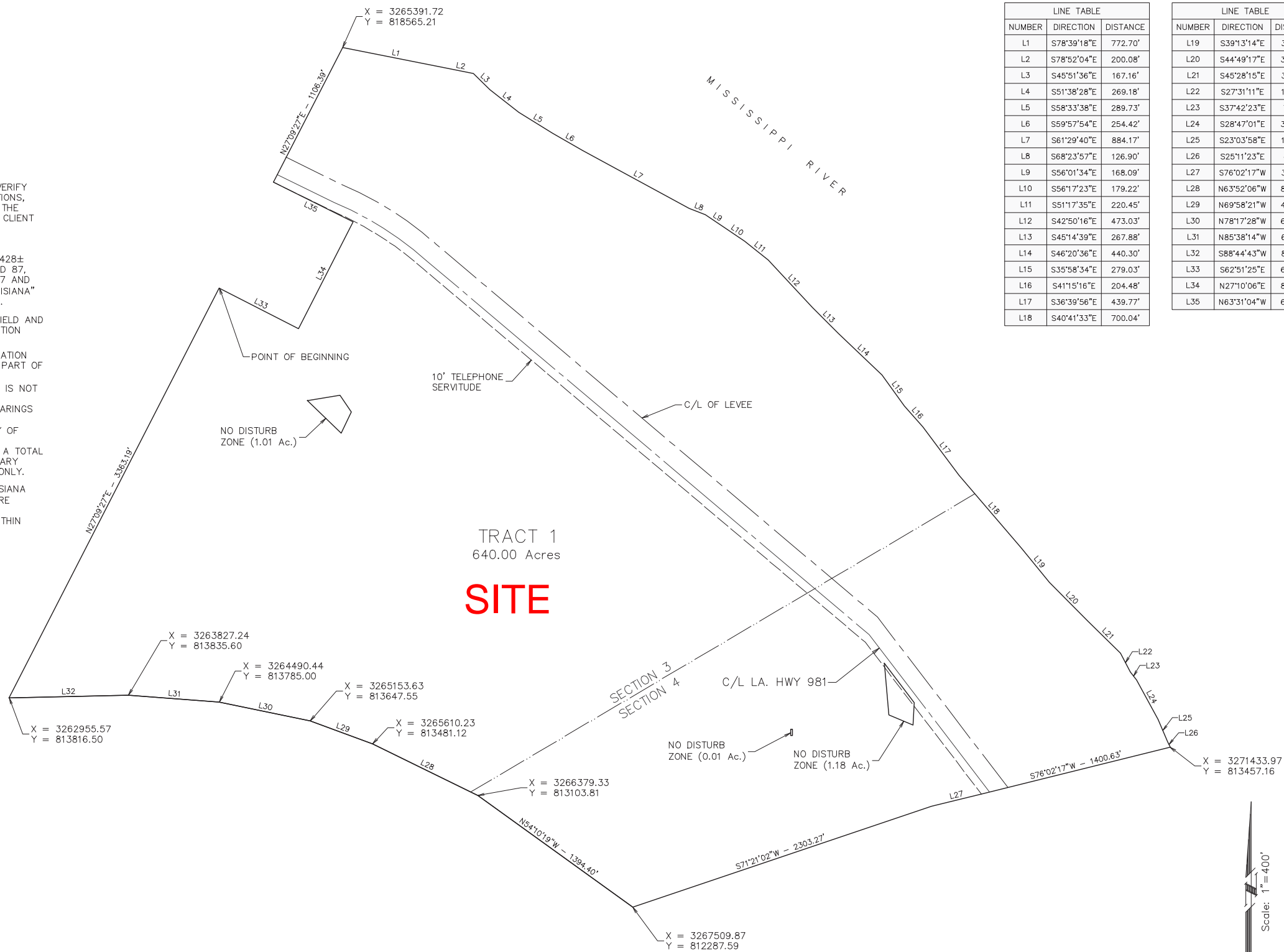
Exhibit F. NRG Industrial Park Property Boundary Survey



VICINITY MAP
Scale: 1"=2000'±

GENERAL NOTES:

- 1.) NO ATTEMPT HAS BEEN MADE BY CSRS, INC. TO VERIFY TITLE, ACTUAL LEGAL OWNERSHIPS, DEED RESTRICTIONS, SERVITUDES, EASEMENTS, OR OTHER BURDENS ON THE PROPERTY, OTHER THAN THAT FURNISHED BY THE CLIENT OR HIS REPRESENTATIVE.
- 2.) REFERENCE DOCUMENTS:
A.) "ALTA/ACSM LAND TITLE SURVEY OF A 2428± ACRE TRACT LOCATED IN SECTIONS 31, 32, 86 AND 87, T-4-S, R-10-E, AND SECTIONS 3, 4, 5, 6, 35, 37 AND 38, T-4-S, R-11-E, POINTE COUPEE PARISH, LOUISIANA" BY JAMES M. THERIOT, DATED SEPTEMBER 4, 1996.
- 3.) SECTION LINES HAVE NOT BEEN VERIFIED IN THE FIELD AND ANY SHOWN ARE FOR GENERAL LOCATIVE INFORMATION ONLY.
- 4.) WETLANDS: A JURISDICTIONAL WETLAND DETERMINATION HAS NOT BEEN DONE, BY CSRS, INC. AND IS NOT PART OF THIS SURVEY.
- 5.) THIS IS NOT A PROPERTY BOUNDARY SURVEY AND IS NOT INTENDED TO MEET THE LOUISIANA STANDARDS OF PRACTICE FOR PROPERTY BOUNDARY SURVEYS. BEARINGS AND DISTANCES OF PARCEL WERE OBTAINED FROM REFERENCE DOCUMENT "A". THE SOUTH BOUNDARY OF TRACT 1 WAS DETERMINED BY OFFSETTING A LINE FOLLOWING THE SOUTH SLOUGH SO AS TO ATTAIN A TOTAL AREA OF APPROXIMATELY 640 ACRES. THE BOUNDARY SHOWN IS FOR GENERAL VISUALIZATION PURPOSES ONLY.
- 6.) THE COORDINATE SYSTEM USED IS NAD 1983 LOUISIANA STATE PLANE SOUTH (US FEET). COORDINATES WERE DERIVED BY OVERLAYING THE BOUNDARY ON A GEOREFERENCED AERIAL PHOTOGRAPH AND ARE WITHIN 100' OF TRUE LOCATION.



NUMBER	DIRECTION	DISTANCE
L1	S78°39'18"E	772.70'
L2	S78°52'04"E	200.08'
L3	S45°51'36"E	167.16'
L4	S51°38'28"E	269.18'
L5	S58°33'38"E	289.73'
L6	S59°57'54"E	254.42'
L7	S61°29'40"E	884.17'
L8	S68°23'57"E	126.90'
L9	S56°01'34"E	168.09'
L10	S56°17'23"E	179.22'
L11	S51°17'35"E	220.45'
L12	S42°50'16"E	473.03'
L13	S45°14'39"E	267.88'
L14	S46°20'36"E	440.30'
L15	S35°58'34"E	279.03'
L16	S41°15'16"E	204.48'
L17	S36°39'56"E	439.77'
L18	S40°41'33"E	700.04'

NUMBER	DIRECTION	DISTANCE
L19	S39°13'14"E	323.17'
L20	S44°49'17"E	395.86'
L21	S45°28'15"E	336.61'
L22	S27°31'11"E	154.94'
L23	S37°42'23"E	74.43'
L24	S28°47'01"E	327.69'
L25	S23°03'58"E	176.84'
L26	S25°11'23"E	43.80'
L27	S76°02'17"W	394.16'
L28	N63°52'06"W	856.66'
L29	N69°58'21"W	485.99'
L30	N78°17'28"W	677.29'
L31	N85°38'14"W	665.12'
L32	S88°44'43"W	871.88'
L33	S62°51'25"E	649.73'
L34	N27°10'06"E	875.05'
L35	N63°31'04"W	649.85'

Revisions



CSRS, Inc.
6767 Perkins Road Suite 200 Baton Rouge, LA 70808
Tele: 225 769-0546 Fax: 225 767-0060
www.csronline.com

Map Showing Site Exhibit

NRG Industrial Park

Located in
SECTIONS 3 & 4
T-4-S, R-11-E

SOUTHEASTERN- WEST OF THE
MISSISSIPPI RIVER LAND DISTRICT
POINTE COUPEE PARISH
LOUISIANA



Date: April 24, 2013
Project Number: 212161.00
Drawn By: JAY
Checked By: TMG

