



RAIL LOGIX LACASSINE

Rail Operations:

Randy Bennett

Chief Operating Officer

713-962-3200

rbennett@rail-logix.com

Property Leases and Sales:

Ryan Lovell

VP - Real Estate & Development

713-826-3878

rl Lovell@nationalpropertyholdings.com

Rail Opportunities:

Manny Tatavak

President, eRAIL Commerce*

757-575-8739

mt@erailcommerce.com

Christopher Senegal

VP - Business Dev., eRAIL Commerce*

225-288-1590

cs@erailcommerce.com

The state-of-the-art Rail Logix Lacassine Industrial Park will accommodate 800 Rail Cars (expandable to 2,300+) with more than 450 Rail Car Spots of Interchange Track.

The Lacassine Industrial Park is the first of its kind in Southwest Louisiana. This park offers unique synergies in the coordination and delivery of cars to rail-served tenants, enabling increased efficiencies and reduced operating costs. On-site service providers will safely coordinate the transloading of product, and the cleaning, maintenance and staging of outbound railcars as a turnkey service.

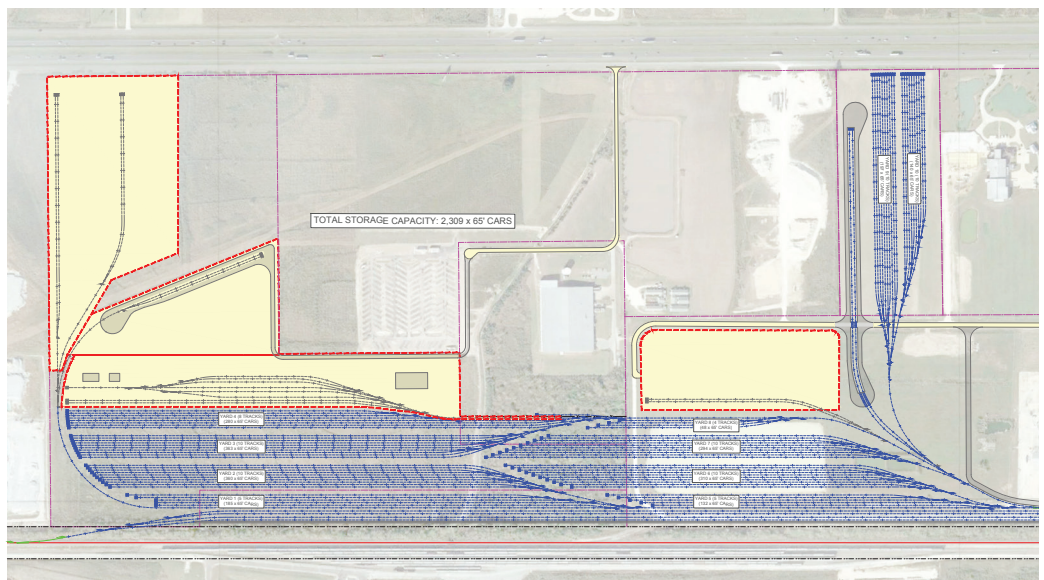
- Located on Jointly Operated UP/BNSF Mainline
- Strategically Positioned at the Mid-Point of Houston and New Orleans Gateways
- Direct Access to Heavy-Haul Corridors Connected to the Port of Lake Charles and the Local Petrochemical Complex, via I-10 and Hwy 90
- Guaranteed Same-Day Interchange Service
- Rail Car Cleaning, Transloading, and Maintenance Services Available On-Site
- Multiple Locomotives Assuring Uninterrupted Service
- Secure, Access-Controlled Facility with 24-Hour Video Surveillance
- Yard Management System Features Real-Time Inventory Control with Web-Based Customer Interface
- 100% Net Acreage Sites Available for Lease or Sale with Build to Suit Capabilities



Rail Logix Lacassine

Lacassine, LA 70650

www.rail-logix.com



*Marketing and business development for the industrial park provided by eRAIL Commerce.