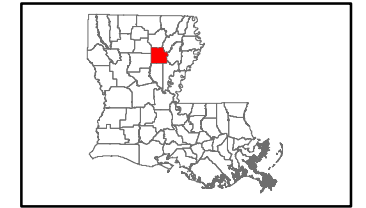


Exhibit U. Port of Columbia Site National Wetlands Inventory Map

National Wetlands Inventory
Port of Columbia Site
Caldwell Parish, LA

Columbia Port Commission



Caldwell Parish

LEGEND

- Site Boundary (171.37 Ac. +/-)
- Wetland Type**
- Freshwater Pond
- Riverine (0.87 Ac. +/-)
- Existing Roadway**
- US Highway
- Local Roads
- Railroad
- Stream

Site Details	
Appx. Site Size:	171.37 Ac. ±
Pre-JD Wetlands:	0.87 Ac. ±



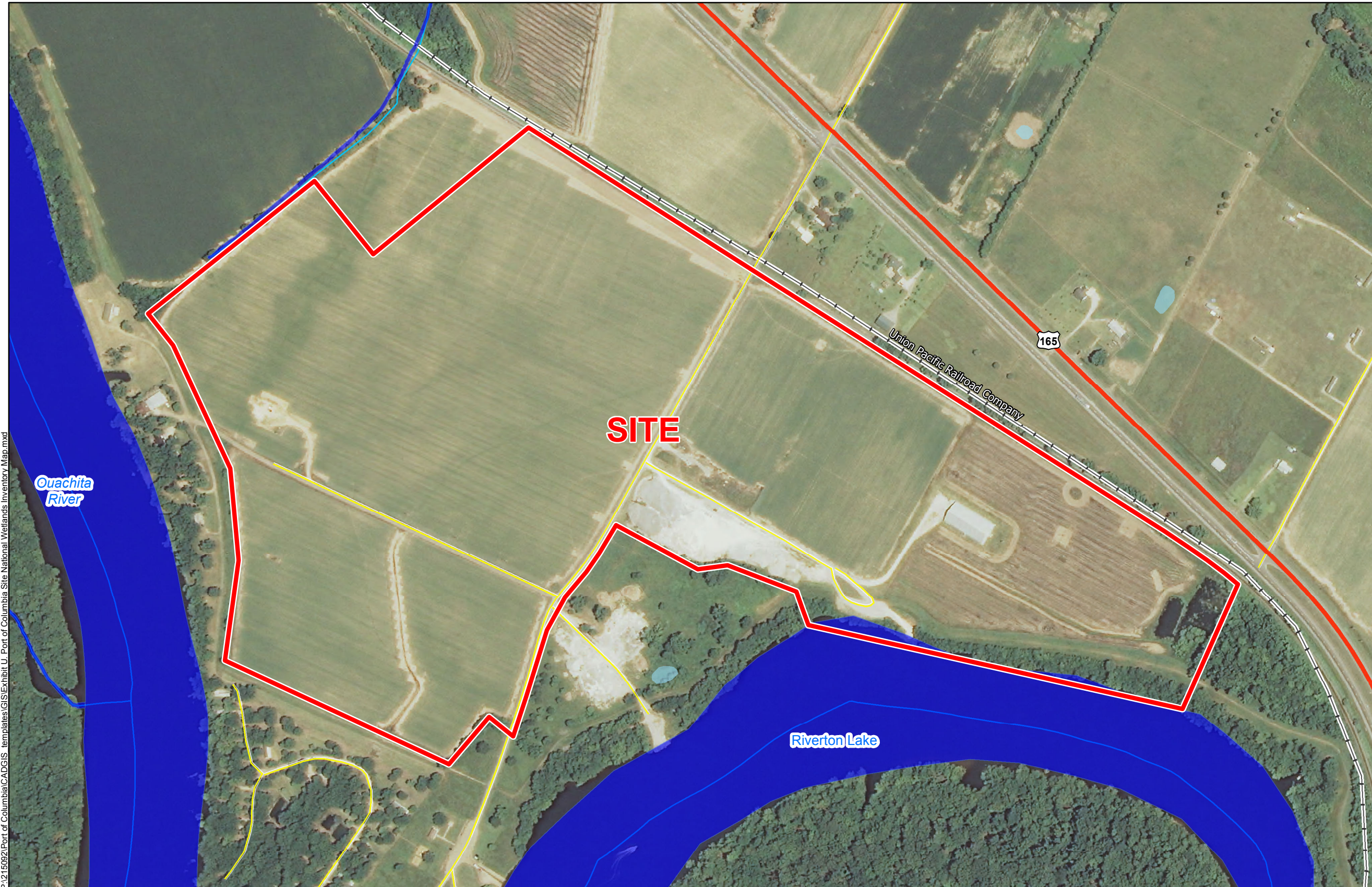
ECONOMIC ALLIANCE

NELEA

Date:	7/20/2015
Project Number:	215092
Drawn By:	AMB
Checked By:	JAY



6767 Perkins Road Suite 200 Baton Rouge, LA 70808
Telephone: 225 769-0546 Fax: 225 767-0060
www.csrsonline.com



P:\215092\Port of Columbia\CAD\GIS templates\GIS\Exhibit U. Port of Columbia Site National Wetlands Inventory Map.mxd

General Notes:

1. No attempt has been made by CSRS, Inc. to verify site boundary, title, actual legal ownership, deed restrictions, servitudes, easements, or other burdens on the property, other than that furnished by the client or his representative.
2. Transportation data from 2013 TIGER datasets via U.S. Census Bureau at [ftp://ftp2.census.gov/geo/tiger/TIGER2013](http://ftp2.census.gov/geo/tiger/TIGER2013).
3. National Wetlands Inventory (NWI) data current as of May 2014 as downloaded from http://www.fws.gov/wetlands/Downloads/State/LA_wetlands.zip.
4. 2013 aerial imagery from USDA-APFO National Agricultural Inventory Project (NAIP) and may not reflect current ground conditions.



Scale 1:5,500
0 290 580 Feet