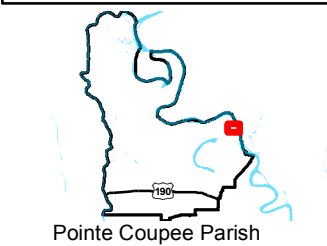


Exhibit V. Moseley North Site National Wetlands Inventory Map

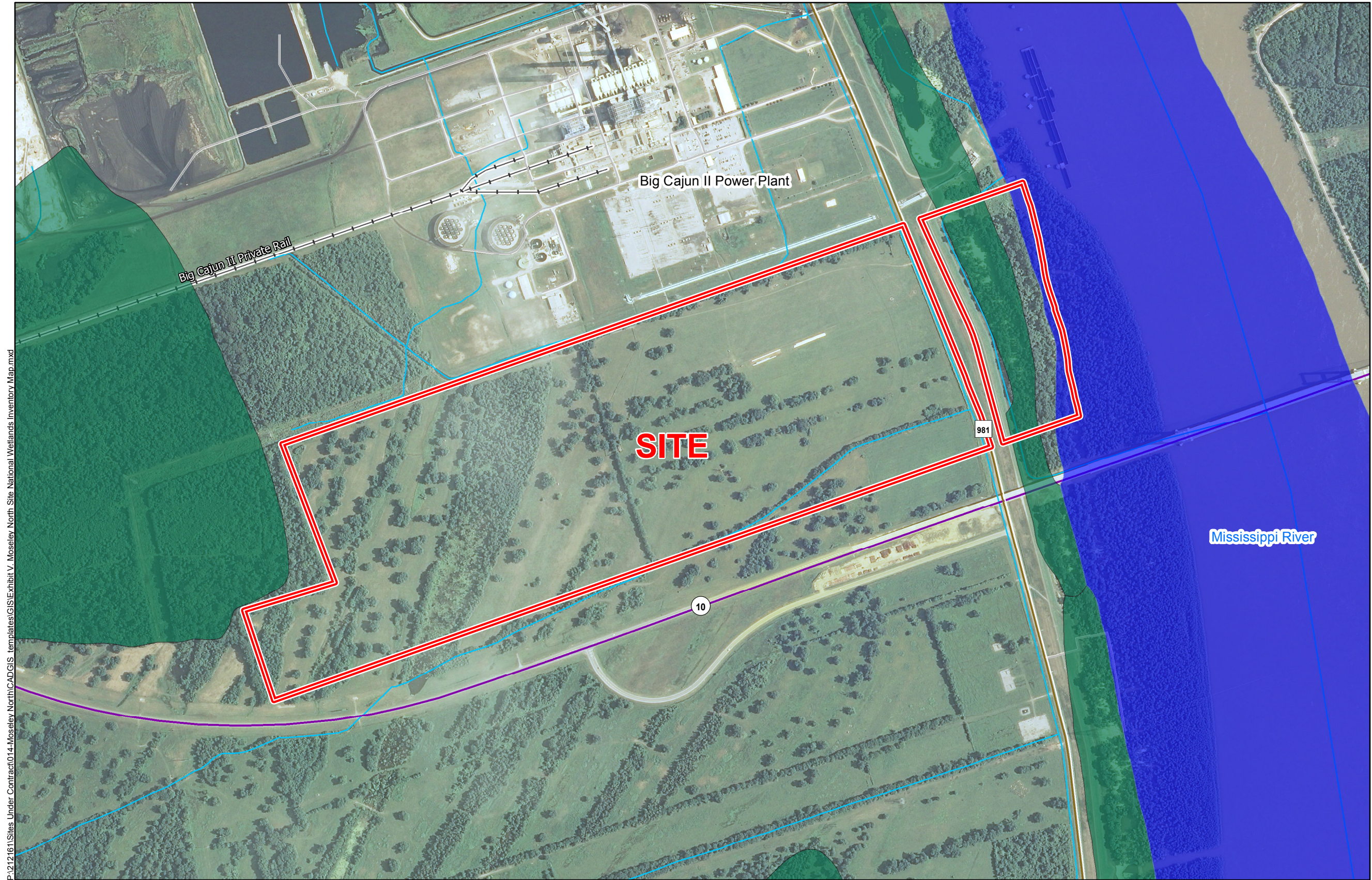
National Wetlands Inventory
Moseley North Site
Pointe Coupee Parish, LA

BRAC



LEGEND

- Site Boundary (304.24 Acres +/-)
- Wetland Type**
 - Freshwater Forested/Shrub Wetland
 - Riverine
- Existing Roadway**
 - Urban State Highway
 - Rural State Highway
 - Local Roads
- Railroad
- Stream



P:\212161\Sites Under Contract\014-Moseley North\CAD\GIS templates\GIS\Exhibit V. Moseley North Site National Wetlands Inventory Map.mxd

- General Notes:
1. No attempt has been made by CSRS, Inc. to verify site boundary, title, actual legal ownership, deed restrictions, servitudes, easements, or other burdens on the property, other than that furnished by the client or his representative.
 2. Transportation data from 2013 TIGER datasets via U.S. Census Bureau at ftp2.census.gov/geo/tiger/TIGER2013.
 3. National Wetlands Inventory (NWI) data current as of May 2014 as downloaded from http://www.fws.gov/wetlands/Downloads/State/LA_wetlands.zip.
 4. 2013 aerial imagery from USDA-APFO National Agricultural Inventory Project (NAIP) and may not reflect current ground conditions.



Scale 1:10,000
0 530 1,060 Feet



Date: 8/10/2015
Project Number: 212161.20.014
Drawn By: MAT
Checked By: TMG

CSRS
IMAGINE SHAPE DELIVER

6767 Perkins Road Suite 200 Baton Rouge, LA 70808
Telephone: 225 769-0546 Fax: 225 767-0060
www.csrsonline.com