

Exhibit E.

Highway 1 Leonard Road Site

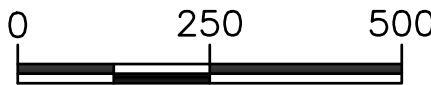
Property Rights of Way Exhibit



Highway 1 Leonard Road Site
Caddo Parish, LA

Client:

SCALE: 1"=500'



Revisions:

#	Date	Description

Key Plan:

LEGEND	
	SITE BOUNDARY (304.45 AC. ±)
	RIGHT OF WAY OR EASEMENT (24.01 AC. ±)
	OFF-SITE RIGHT OF WAY OR EASEMENT

Sheet Title:

Property Rights
of Way Exhibit

Date:	July 2020
Project Number:	216269
Drawn By:	KPH
Checked By:	EEB

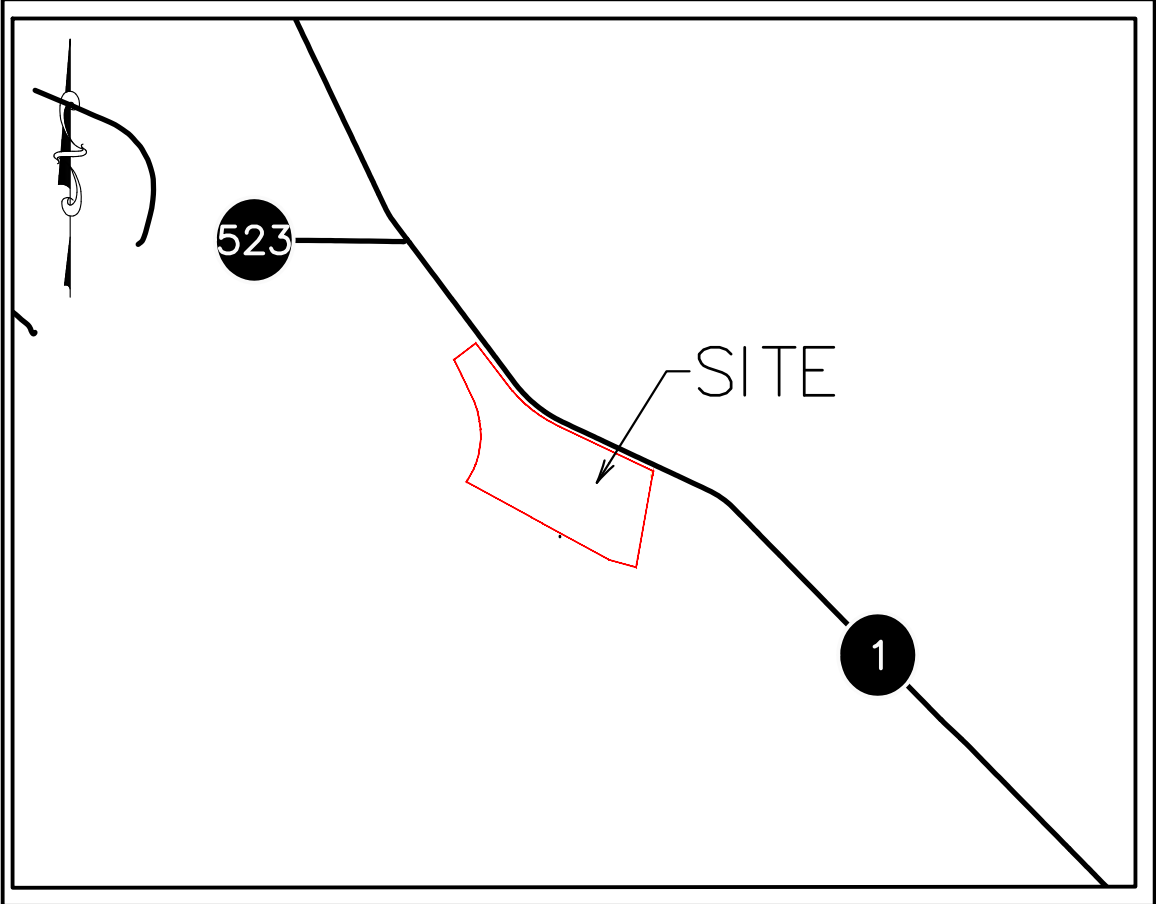
Sheet:

Highway 1 Leonard Road Site Property Rights of Way Exhibit

SERVITUDE INDEX	
RIGHT OF WAY/SERVITUDE	ONSITE AREA AFFECTED
1. CADDO-BOSSIER PARISHES PORT COMMISSION 50' UTILITY SERVITUDE	6.72 AC.
2. UNION PACIFIC RAILROAD 100' ROW	4.34 AC.
3. FRANKS INVESTMENT CO. 30' UTILTIY SERVITUDE & 20' TEMP. WORK EASEMENT	0.88 AC.
4. J-W OPERATING CO. APPARENT ROW	1.33 AC.
5. INTERSTATE PIPELINE CO. APPARENT ROW	1.33 AC.
6. CHESAPEAKE OPERATING, INC SURFACE USE AGREEMENT	4.60 AC.
7. PETROHAWK OPERATING CO. SURFACE USE AGREEMENT	9.45 AC.
8. KINDERHAWK FIELD SERVICES, L.L.C. 20' ROW & 40' TEMP. WORK SPACE	1.31 AC.
9. CADDO LEVEE DISTRICT 120' DRAINAGE ROW	4.64 AC.
10. CITY OF SHREVEPORT 15' SEWER EASEMENT & 60' TEMP. CONST. EASEMENT	3.94 AC.
LESS:	0.48 AC.
TOTAL:	24.01 AC.

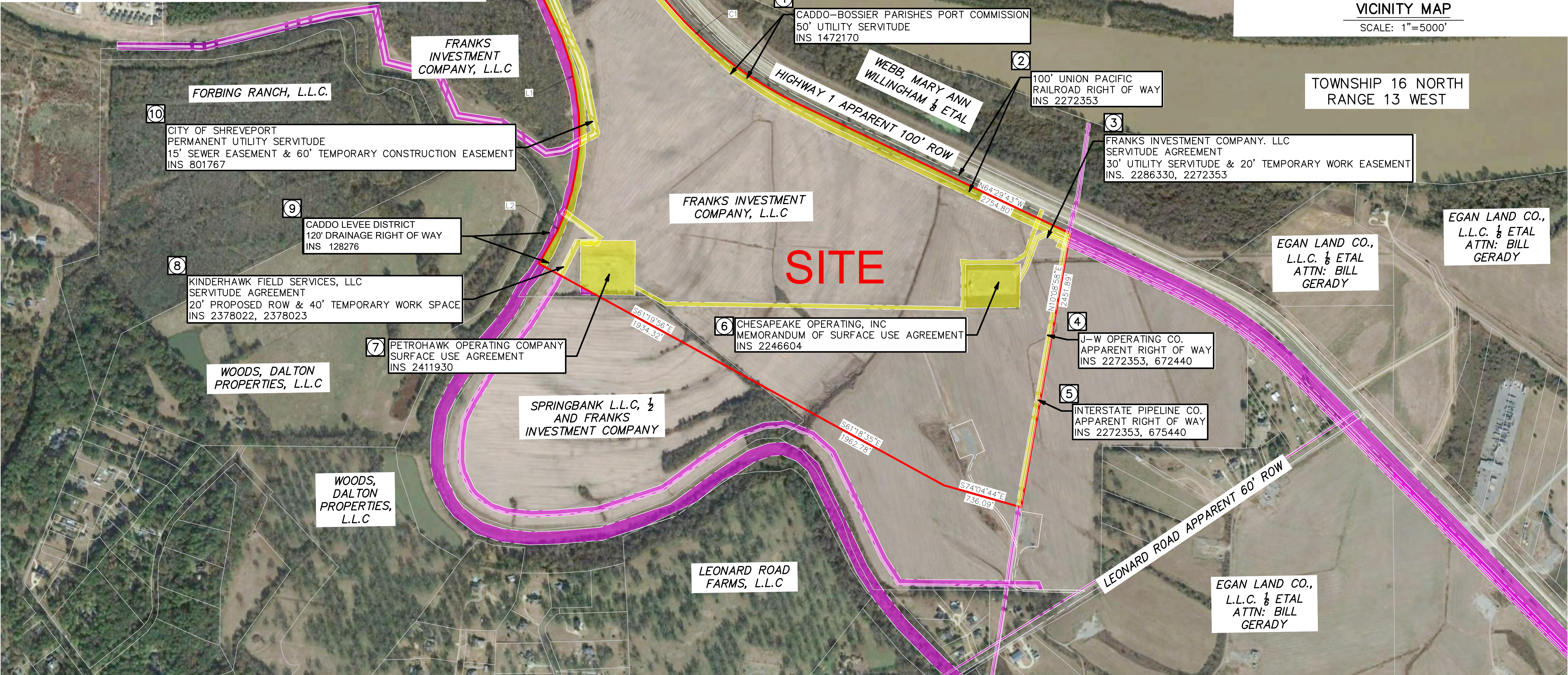
CURVE TABLE					
NUMBER	RADIUS	ARC LENGTH	CHORD DIRECTION	CHORD LENGTH	DELTA ANGLE
C1	3610.87'	1751.53'	N50°35'57"W	1734.41'	27°47'33"

LINE TABLE		
NUMBER	BEARING	DISTANCE
L1	—	2820.67'
L2	—	580.78'



VICINITY MAP

SCALE: 1"=5000'



GENERAL NOTES:

1. No attempt has been made by CSRS, Inc. to verify title, actual legal ownership, deed restrictions, servitudes, easements, or other burdens on the property, other than that furnished by the client or his representative.
2. Depicted exhibit based on Ouachita Parish Clerk of Court Recordings researched from August 24, 1943 to July 06, 2020.
3. This is not a property boundary survey and is not intended to meet the Louisiana standards of practice for property boundary surveys. Bearings and distances of tracts were obtained from document referenced above.
4. The coordinate system used is NAD83 Louisiana State Plane North (US feet). Coordinates were derived by overlaying the boundary on an aerial photograph and are within 100' of true location.
5. Rights of Way, Easements, and Servitudes shown hereon have not been verified in the field and any shown are for general locative information only.