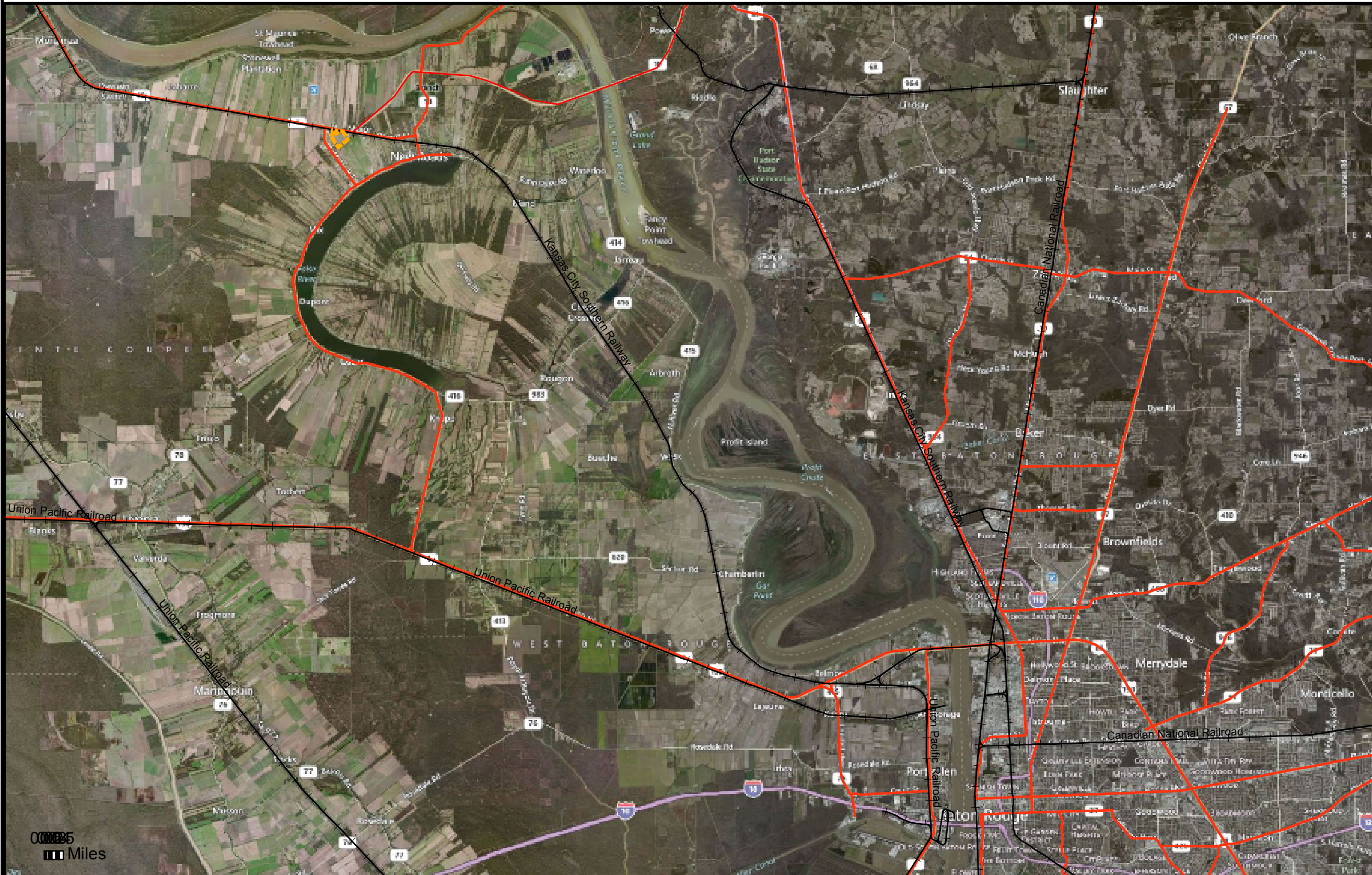
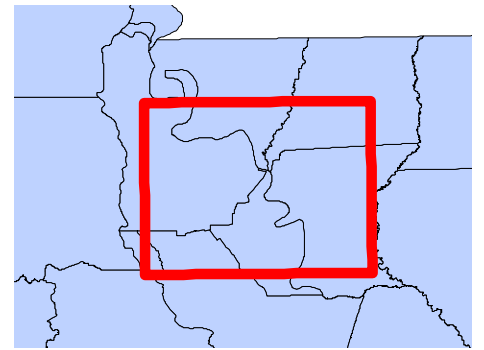


# Exhibit P. New Roads Industrial Park Roadway Transportation Infrastructure Wide Map



PARISH VICINITY



- Legend**
- Poydras Site
  - Railroad
  - Truck Route

**CONFIDENTIAL**

**Source**

Parcel data supplied by Pointe Coupee Assessor.  
Parcel acreage values approximated.  
GIS features acquired from public domain state and federal data sources (GNIS, LOSCO, US Census Bureau).

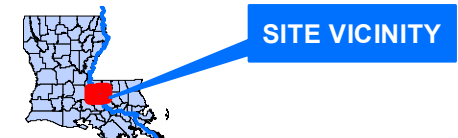
**Title**  
**POINTE COUPEE PARISH**  
**NEW ROADS**  
**INDUSTRIAL PARK**

**Project**

|                    |            |             |                |
|--------------------|------------|-------------|----------------|
| <b>GIS Analyst</b> | <b>WBM</b> | <b>Date</b> | <b>9/13/12</b> |
|--------------------|------------|-------------|----------------|

|                        |                |                |
|------------------------|----------------|----------------|
| <b>LEO Project No.</b> | <b>Map No.</b> | <b>Version</b> |
| <b>12-003</b>          |                | <b>001</b>     |

LEO, LLC  
17170 Perkins Road  
Baton Rouge, Louisiana 70810  
(225) 281-4202



**SITE PROFILE: New Roads Industrial Park**  
**Acres: 72**