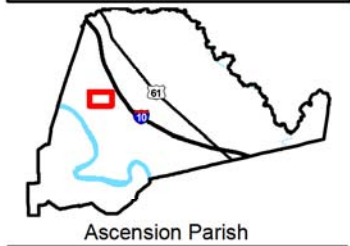


Exhibit K. Grezaffi North Site Electrical Transmission Infrastructure Map

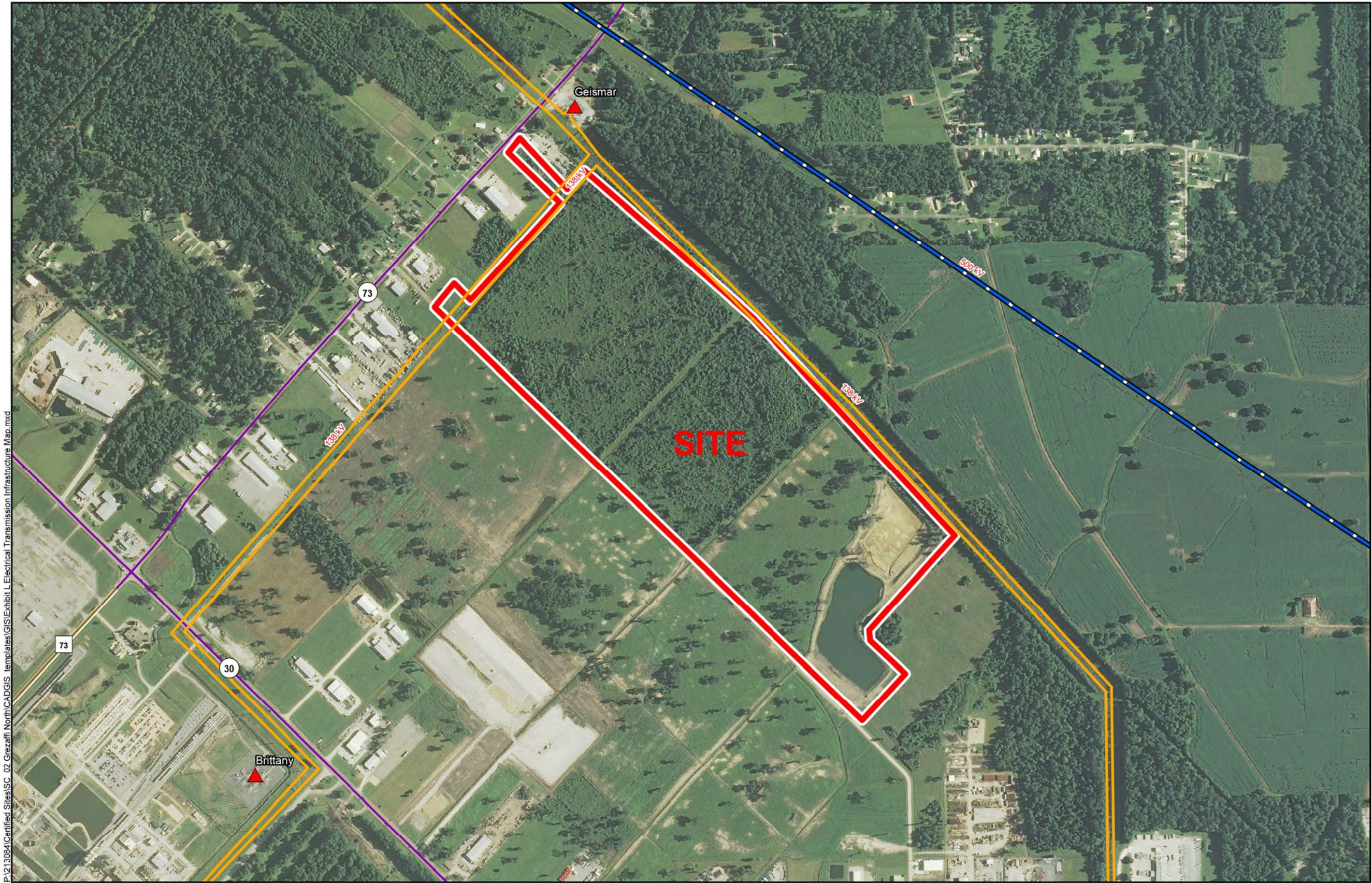
Existing Electric Transmission
Grezaffi North Site
Ascension Parish, LA

AEDC



LEGEND

- Site Boundary (171.53 Acres +/-)
- Electric Transmission
 - 500 kV
 - 138 kV
- Substation
- Existing Roadway
 - Urban State Highway
 - Rural State Highway



P:\213084\Certified Sites\SC_02 Grezaffi North\CAD\GIS templates\GIS\Exhibit L Electrical Transmission Infrastructure Map.mxd

General Notes:
1. No attempt has been made by CSRS, Inc. to verify site boundary, title, actual legal ownership, deed restrictions, servitudes, easements, or other burdens on the property, other than that furnished by the client or his representative.
2. Transportation data from 2013 TIGER datasets via U.S. Census Bureau at <ftp://ftp2.census.gov/geo/tiger/TIGER2013>.
3. Utility information from visual inspection and/or the individual utility operators. Exact field location has not been determined by survey. The lines shown are an approximate representation only and may have been offset for depiction purposes.
4. 2013 aerial imagery from USDA-APFO National Agricultural Inventory Project (NAIP) and may not reflect current ground conditions.



Scale 1:9,600
0 510 1,020 Feet



Date: 11/18/2014
Project Number: 213084.20.002
Drawn By: MAT
Checked By: TMG

