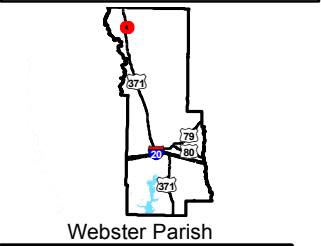
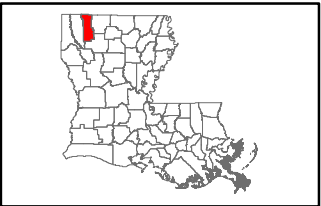


# Exhibit G. North Webster Parish Industrial District Site Wetlands Delineation Map

Wetlands  
NWPID Site  
Webster Parish, LA

NWPID



- Legend**
- Site Boundary (61.33 Acres +/-)
  - Wetlands (18.17 Ac. +/-)
  - Existing Roadway**
    - US Highway
    - Local Roads
    - Existing Railroad

## Site Details

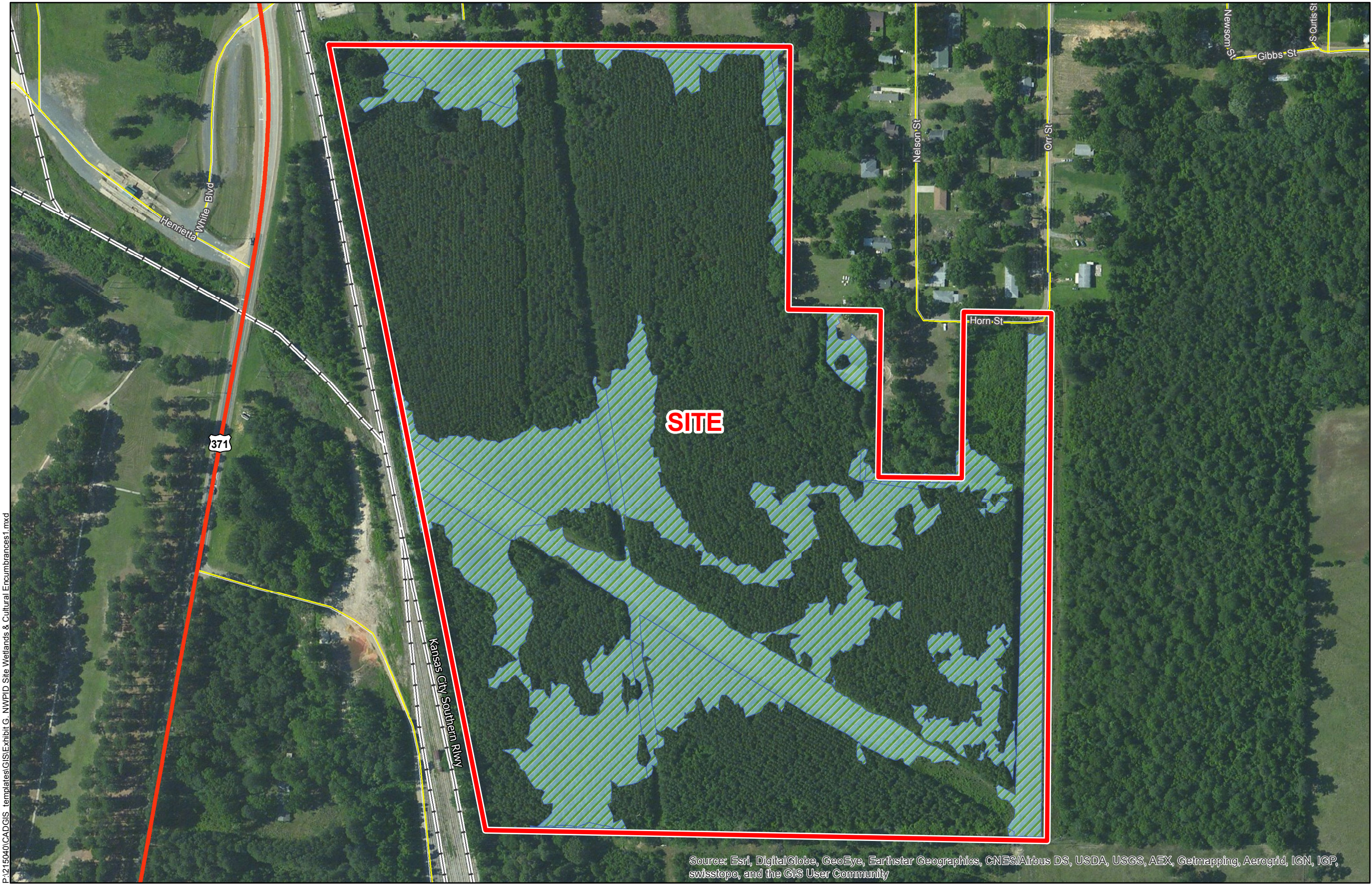
Appx. Site Size: 61.33 Ac. ±  
Potential Wetlands: 18.17 Ac. ±



**NORTH WEBSTER PARISH  
INDUSTRIAL DISTRICT**

Date:	10/5/2015
Project Number:	215040
Drawn By:	AMB
Checked By:	JAY

**CSRS**  
IMAGINE SHAPE DELIVER  
6767 Perkins Road Suite 200 Baton Rouge, LA 70808  
Telephone: 225 767-0546 Fax: 225 767-0060  
www.csronline.com



- General Notes:
- No attempt has been made by CSRS, Inc. to verify site boundary, title, actual legal ownership, deed restrictions, servitudes, easements, or other burdens on the property, other than that furnished by the client or his representative.
  - Transportation data from 2013 TIGER datasets via U.S. Census Bureau at <ftp://ftp2.census.gov/geo/tiger/TIGER2013>.
  - Pre-JD Wetlands delineation shapefile provided by KSA Alliance, Inc. in their report KSA Alliance, Inc. Project Number 047882.00 dated 06/30/2015.

