

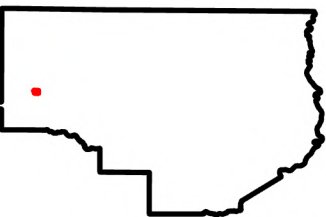
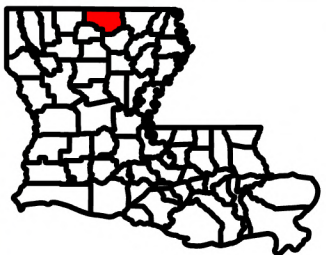
# Exhibit BB. BIDCO Site All Utilities Infrastructure Map



# BIDCO Site All Utilities Infrastructure Map

Site Exhibit for  
BIDCO Site  
Union Parish, LA

## NELA



## Legend

- BIDCO Site Boundary ( $\pm 142.25$  Ac)
- Existing 2" Delta Utilities Natural Gas Infrastructure
- Delta Utilities Future 4in Line
- Future DU Natural Gas extension
- AT&T Telecommunications Infrastructure

### Town of Bernice Potable Water Lines

- 2"
- 4"
- 6"
- 8"

### Town of Bernice Wastewater Lines

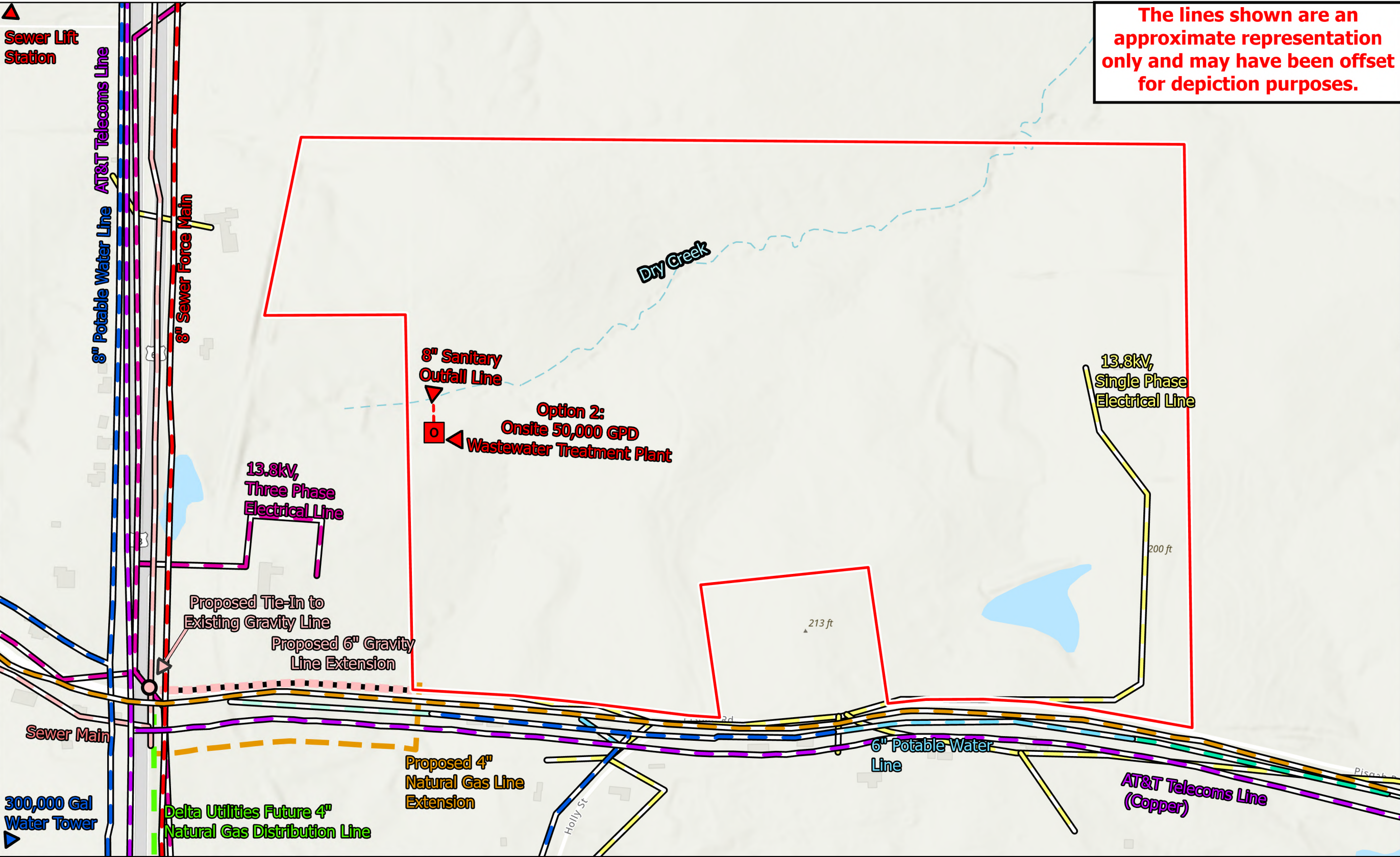
- 8" Sewer Force Main
- Sewer Main
- Proposed 6" Gravity Line ( $\pm 950$  LF)

### Entergy Electrical Distribution

- Entergy 13.8kV, Single Phase Electrical Line
- Entergy 13.8kV, Two Phase Electrical Line
- Entergy 13.8kV, Three Phase Electrical Line
- 8" Sanitary Outfall Line ( $\pm 140$  LF)
- 50,000 GPD Onsite Wastewater Treatment Plant

Date: 9/2/2025  
Project Number: 222263  
Drawn By: CFO  
Checked By: EEB

The lines shown are an approximate representation only and may have been offset for depiction purposes.



General Notes:  
1. The information presented herein is for planning purposes only. Further detailed due diligence MUST be completed prior to making decisions regarding the site.  
2. No attempt has been made by CSRS, Inc. to verify site boundary, title, actual legal ownership, deed restrictions, servitudes, easements, or other burdens on the property, other than that furnished by the client or his representative.  
3. Transportation data from 2023 TIGER datasets via U.S. Census Bureau at <LINK><https://www.census.gov/geographies/mapping-files/time-series/geo/tiger-line-file.html></LINK>  
4. Aerial imagery is compiled from multiple different sources to create one cohesive image and may not reflect current ground condition.  
5. Utility information from visual inspection and/or the individual utility operators. Exact field location has not been determined by survey.  
6. Utility data was derived and digitized from information provided by Entergy, AT&T, Delta Utilities, and the Town of Bernice.

CSRS

0 230 460  
Feet