

Exhibit 6.
Site Utilities Maps



Town of Montgomery

NO.	DATE	BY	REVISION

MONTGOMERY
INDUSTRIAL SITE
MONTGOMERY, LA.



COTHREN, GRAFF,
SMOAK ENG., INC.

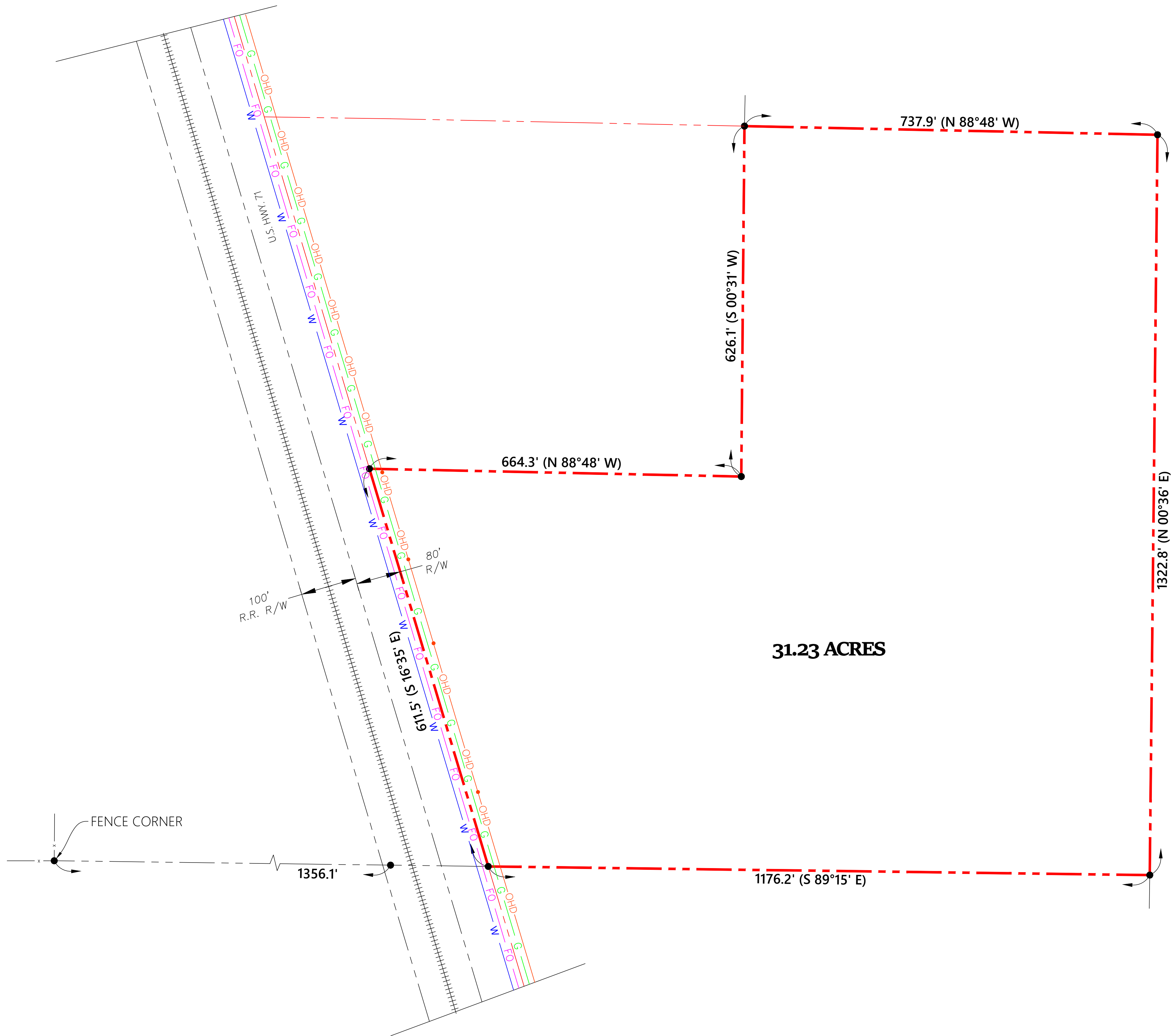
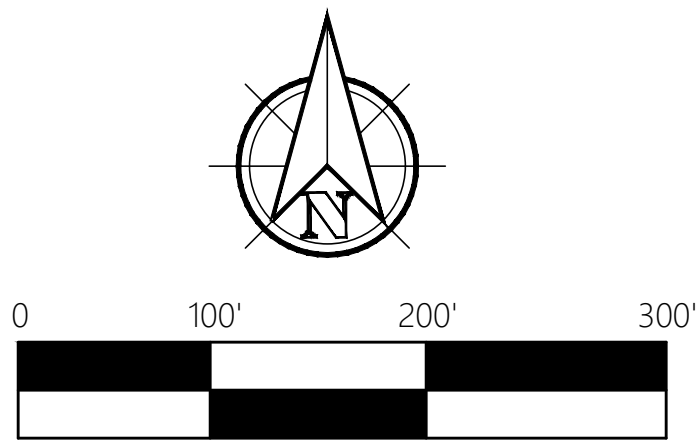
CIVIL • ENVIRONMENTAL
SANITARY • STRUCTURAL
MECHANICAL • ELECTRICAL

6305 Westport Avenue
Shreveport, LA. 71129-2499
Ph. 318-687-3732
112 Horn Street
Natchitoches, LA. 71457
Ph. 318-354-6888
FIRM LICENSE - LA 2636
AL 7531 • TX 1754



DRAWN: LKW/JLC	ENG: KRS
SCALE: N.T.S.	PROJECT: 18061

DATE:
DECEMBER 2018
SHEET NO.:



LEGEND

- G GAS (TRANSMISSION)
- FO FIBER OPTIC
- W WATER (DISTRIBUTION)
- OHD OVERHEAD ELECTRIC



BUSINESS
DEVELOPMENT

LOUISIANA

ENTERGY INFRASTRUCTURE

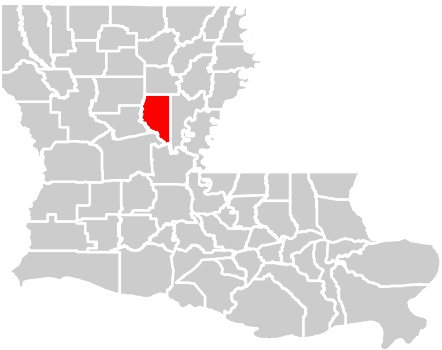
Montgomery Site

446 North Blvd
Baton Rouge, LA 70802

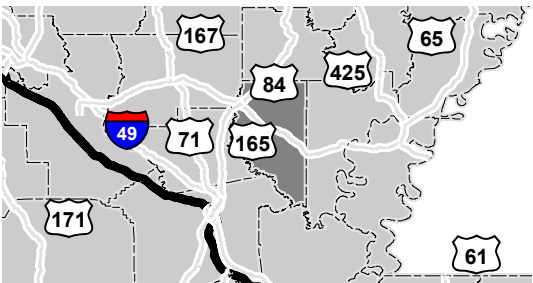
Phone: 1-800-542-2668
laed@entergy.com

GoEntergy.com/Louisiana

GRANT PARISH



VIEW EXTENT



LEGEND

- Entergy Substation
- Transmission Lines**
 - 500 kV
 - 230 kV
 - 115 kV
 - 69 kV
- Distribution Lines**
 - Single Phase, Overhead
 - 2 Phase, Overhead
 - 3 Phase, Overhead
 - Underground

NOTE

These drawings are provided merely to assist in economic development efforts. The Entergy Companies make no representations or warranties whatsoever regarding the accuracy or completeness of any information contained herein nor the condition or suitability of any properties. Users should direct inquiries about any property to the listing broker for that property.

SOURCE

Service Layer Credits: Esri, HERE, Garmin, © OpenStreetMap contributors, and the GIS user community
Source: Esri, DigitalGlobe, GeoEye, Earthstar Geographics, CNES/Airbus DS, USDA, USGS, AeroGRID, IGN, and the GIS User Community. Electrical Infrastructure from Entergy Services, Inc. (2018). Rail data from USDOT. Road data from LADOTD. Site Boundary approximated.

Created by: AAS
Date: 4/23/2019

