

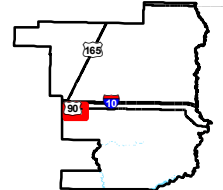
Exhibit Q. T.O. Allen Industrial Park
North Roadway Transportation
Infrastructure Wide Map



T.O. Allen Industrial Park North Roadway Transportation Infrastructure Wide Map

Area Transportation Infrastructure
Allen Estates North Site
Jefferson Davis Parish, LA

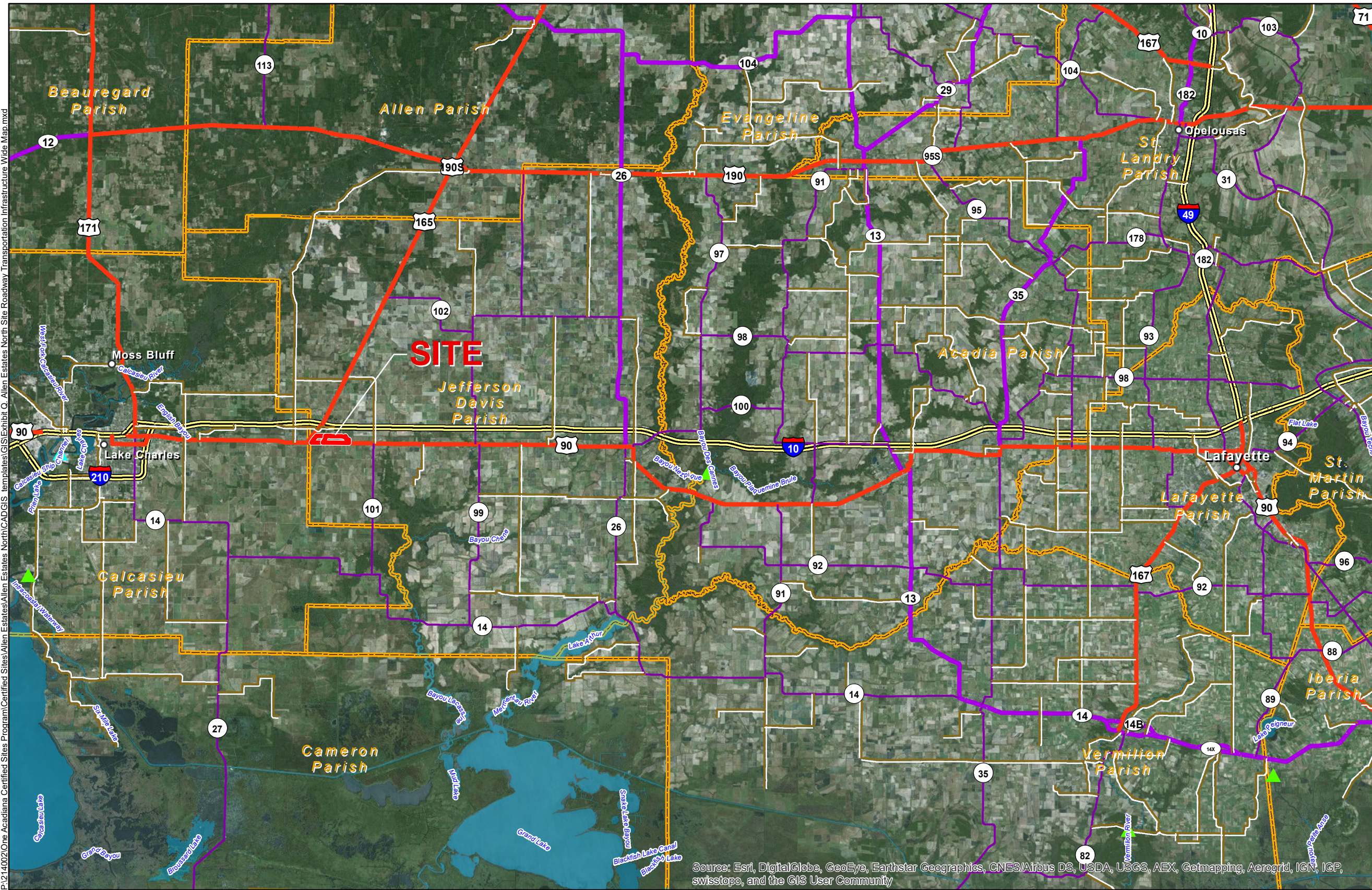
One Acadiana



Jefferson Davis Parish

LEGEND

- Site Boundary (561.51 Ac. ±)
- Parish Boundary
- ▲ Deep Draft Port
- ▲ Shallow Draft Port
- Existing Roadway**
- ▬ Interstate
- ▬ US Highway
- ▬ 4-Lane State Highway
- ▬ Urban State Highway
- ▬ Rural State Highway
- Waterbody



Source: Esri, DigitalGlobe, GeoEye, Earthstar Geographics, CNES/Airbus DS, USDA, USGS, AEX, Getmapping, Aerogrid, IGN, IGP, swisstopo, and the GIS User Community

- General Notes:
1. No attempt has been made by CSRS, Inc. to verify site boundary, title, actual legal ownership, deed restrictions, servitudes, easements, or other burdens on the property, other than that furnished by the client or his representative.
 2. Transportation data from 2013 TIGER datasets via U.S. Census Bureau at [ftp://ftp2.census.gov/geo/tiger/TIGER2013](http://ftp2.census.gov/geo/tiger/TIGER2013).
 3. 2015 aerial imagery from ESRI Online Basemaps and may not reflect current ground conditions.



Date:	1/17/2017
Project Number:	214002
Drawn By:	TMK
Checked By:	JAY

CSRS
IMAGINE SHAPE DELIVER

6767 Perkins Road Suite 200 Baton Rouge, LA 70808
Telephone: 225 767-0546 Fax: 225 767-0060
www.csrsone.com

P:\214002\One Acadiana Certified Sites Program\Certified Sites\Allen Estates North\CAD\GIS templates\GIS\Exhibit O - Allen Estates North Site Roadway Transportation Infrastructure Wide Map.mxd