

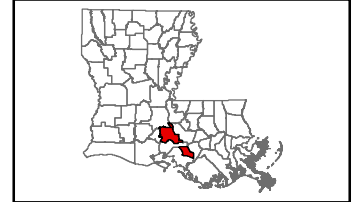
Exhibit V. Breux Bridge I-10 Site U.S. Geological Survey Quad Map



Breaux Bridge I-10 Site U.S. Geological Survey Quad Map

Breaux Bridge I-10 Site
St. Martin Parish, LA

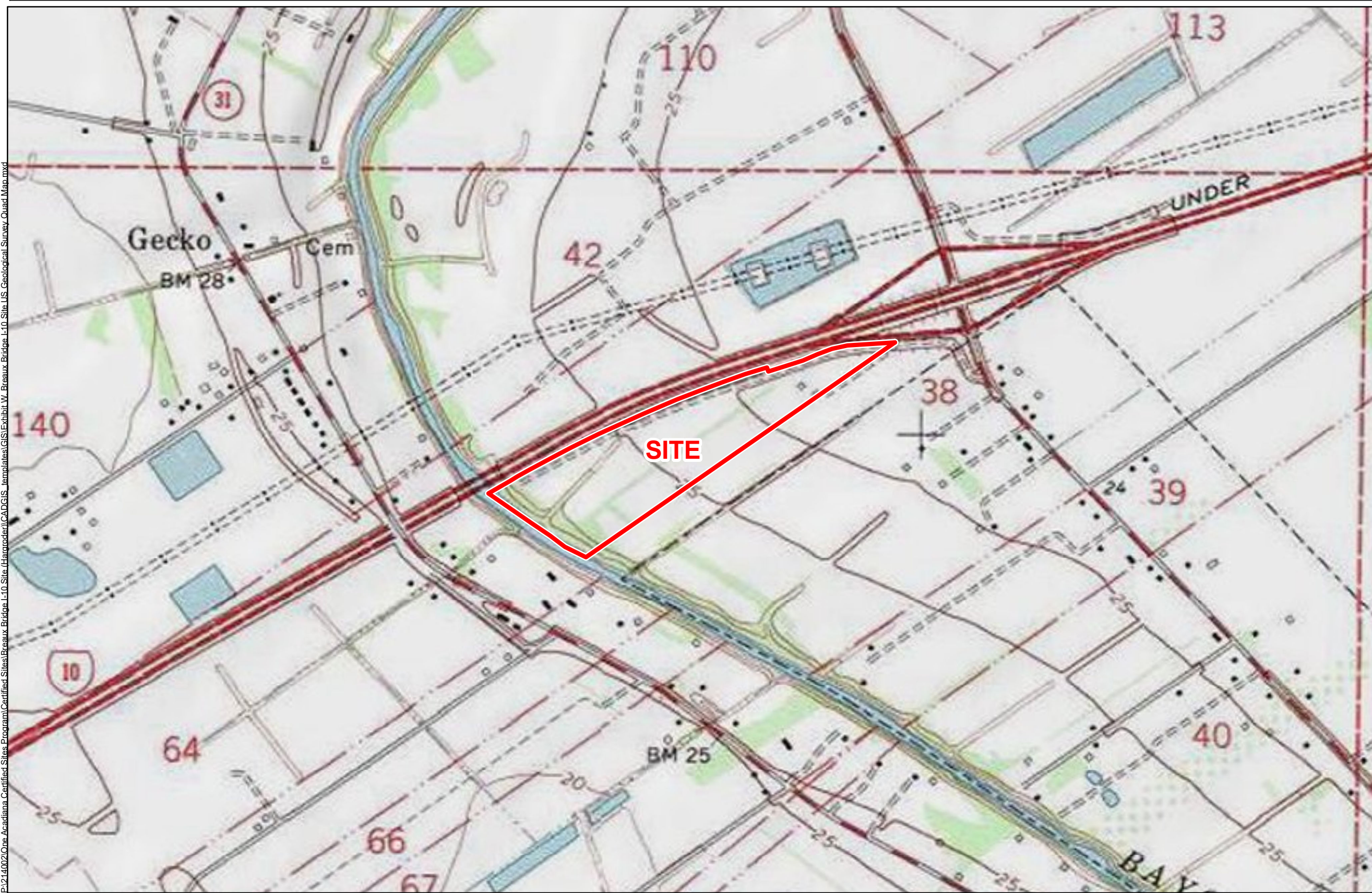
One Acadiana



St. Martin Parish

LEGEND

Site Boundary (43± ac.)



P:\214002\One Acadiana Certified Sites\Breaux Bridge I-10 Site (Hardcopy)\CAD\GIS Templates\GIS\Exhibit W Breaux Bridge I-10 Site U.S. Geological Survey Quad Map.mxd



Date:	11/7/2022
Project Number:	214002
Drawn By:	BMS
Checked By:	EEB

General Notes:
 1. No attempt has been made by CSRS, Inc. to verify site boundary, title, actual legal ownership, deed restrictions, servitudes, easements, or other burdens on the property, other than that furnished by the client or his representative.
 2. Topo data and symbologies from USDA NRCS site <http://datagateway.nrcs.usda.gov/GDGOrder.aspx> as created by USDA/NRCS National Geospatial Center of Excellence "USDA-NRCS-NGC Digital Raster Graphic MrSID Mosaic".

