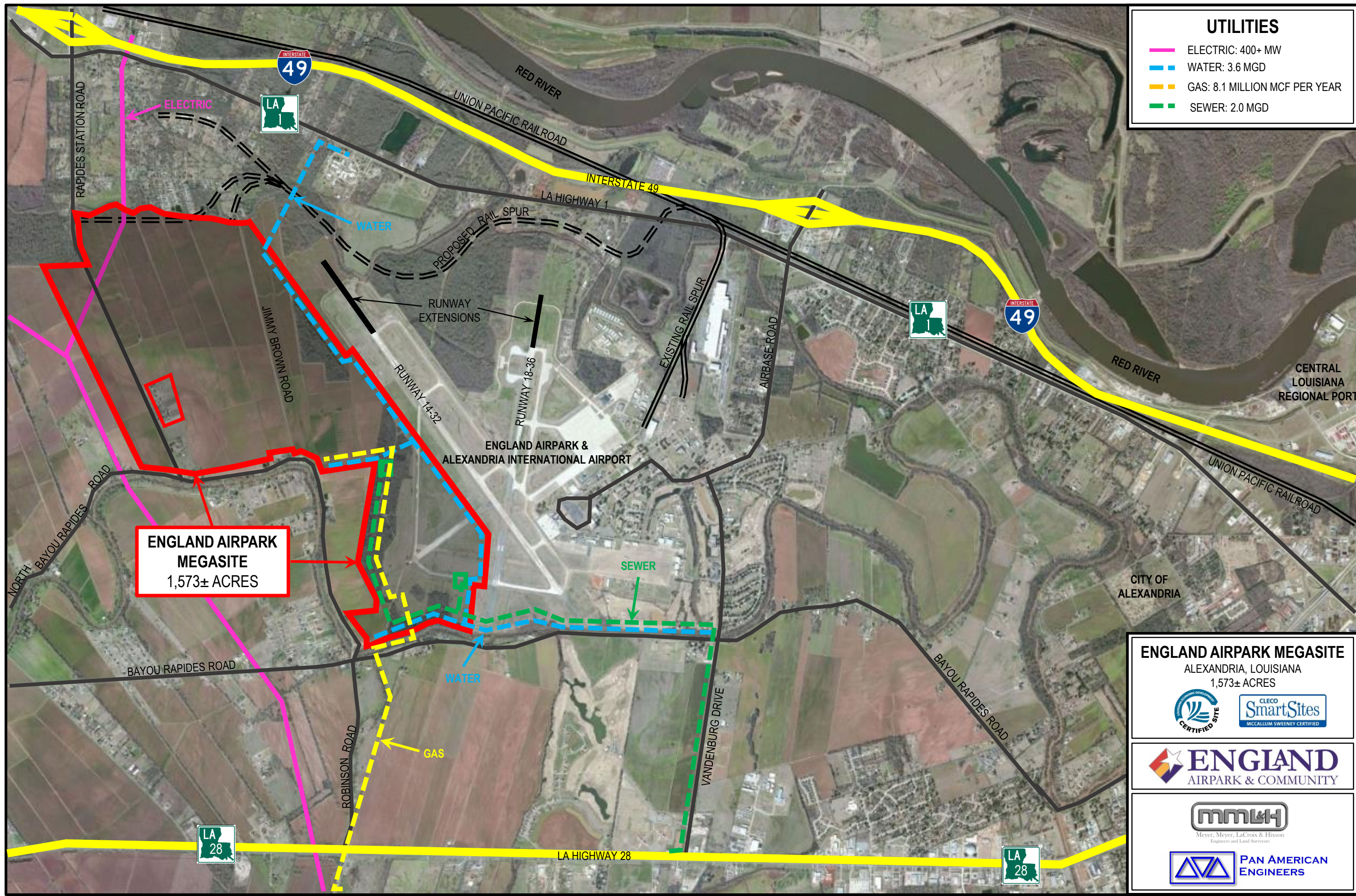


UTILITIES

- ELECTRIC: 400+ MW
- WATER: 3.6 MGD
- GAS: 8.1 MILLION MCF PER YEAR
- SEWER: 2.0 MGD



**ENGLAND AIRPARK
MEGASITE**
1,573± ACRES

ENGLAND AIRPARK MEGASITE
ALEXANDRIA, LOUISIANA
1,573± ACRES

ENGLAND
AIRPARK & COMMUNITY