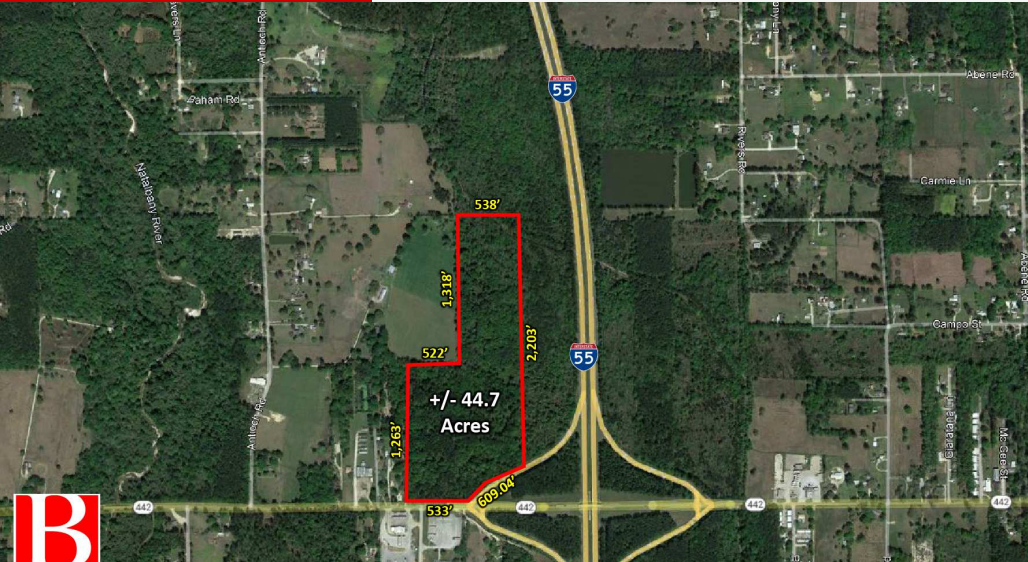


44.7 Acres NW Corner of I-55 and LA Hwy 442

Highway 442 Tickfaw, LA 70466

PROPERTY SUMMARY



Property Description

Situated at the northwest corner of the bustling intersection of Interstate 55 and Hwy 442, this expansive vacant track of land in Tickfaw, Louisiana offers a prime location for various commercial and developmental opportunities.

Property Highlights

- NW Corner of I-55 and LA Hwy 442
- Prime location for various commercial and developmental opportunities
- 7.5 miles North of I-12
- Flood Zone X

Marshall A. Rice
318.470.8700
mrice@beaubox.com

Broker of Record, Beau J. Box; Licensed by the Louisiana Real Estate Commission, Mississippi Real Estate Commission, Alabama Real Estate Commission and Florida Real Estate Commission, USA. This information has been secured from sources we believe to be reliable, but we make no representations or warranties, expressed or implied, as to the accuracy of the information. References to square footage or age are approximate. Buyer must verify the information and bears all risk for any inaccuracies. © Beau Box Commercial Real Estate. 5500 Bankers Avenue, Baton Rouge, LA 70808 | 225-237-3343. | July 11, 2023

Offering Summary

| | |
|-------------|-------------|
| Sale Price: | \$6,700,000 |
| Lot Size: | 44.7 Acres |

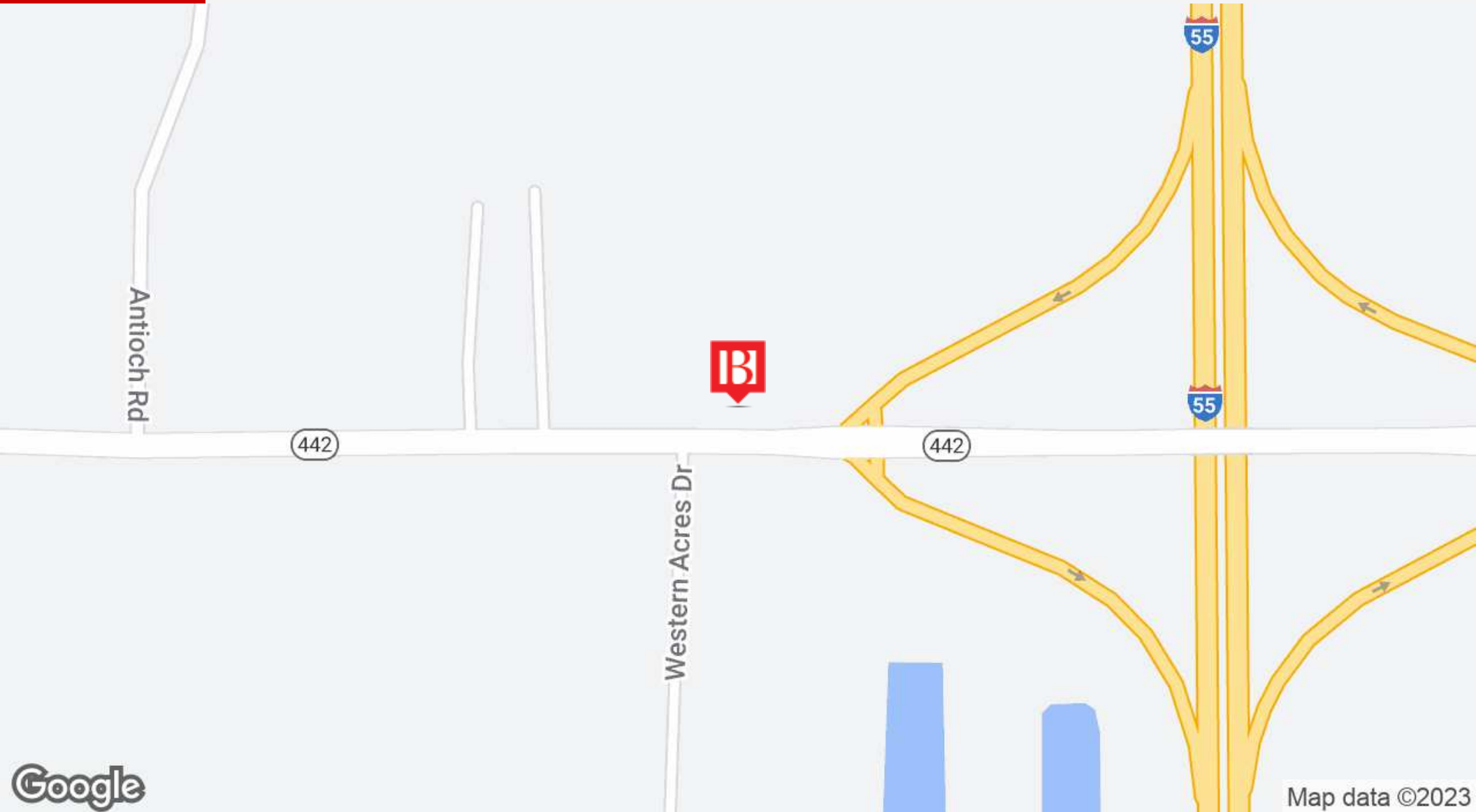
| Demographics | 5 Miles | 10 Miles | 15 Miles |
|-------------------|----------|----------|----------|
| Total Households | 11,633 | 39,569 | 56,192 |
| Total Population | 28,236 | 96,028 | 135,030 |
| Average HH Income | \$51,685 | \$58,562 | \$59,376 |



44.7 Acres NW Corner of I-55 and LA Hwy 442

Highway 442 Tickfaw, LA 70466

LOCATION MAP



Marshall A. Rice
318.470.8700
mrice@beaubox.com

Broker of Record, Beau J. Box; Licensed by the Louisiana Real Estate Commission, Mississippi Real Estate Commission, Alabama Real Estate Commission and Florida Real Estate Commission, USA. This information has been secured from sources we believe to be reliable, but we make no representations or warranties, expressed or implied, as to the accuracy of the information. References to square footage or age are approximate. Buyer must verify the information and bears all risk for any inaccuracies. © Beau Box Commercial Real Estate. 5500 Bankers Avenue, Baton Rouge, LA 70808 | 225-237-3343. | July 11, 2023

