



## **Exhibit II.**

# **Loul's Landing**

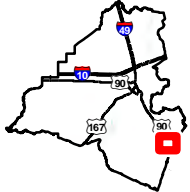
# **Field Visit Photo Index**



# Loul's Landing Site Field Visit Photo Index

Site Exhibit for  
Loul's Landing Site  
Lafayette Parish, LA

LED



Lafayette Parish

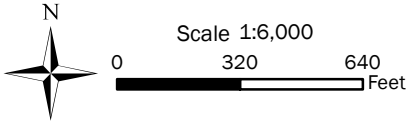
### LEGEND

- Site Boundary (64.8± ac.)
- Photos
- Stream
- Existing Roadway**
- US Highway
- 4-Lane State Highway
- Urban State Highway
- Railroad



C:\Users\stelly\OneDrive - CSRS, Inc\Documents\Test Site\_Visit\_Photo\_Index\Exhibit HH\_Site\_Field\_Visit\_Photo\_Index.mxd

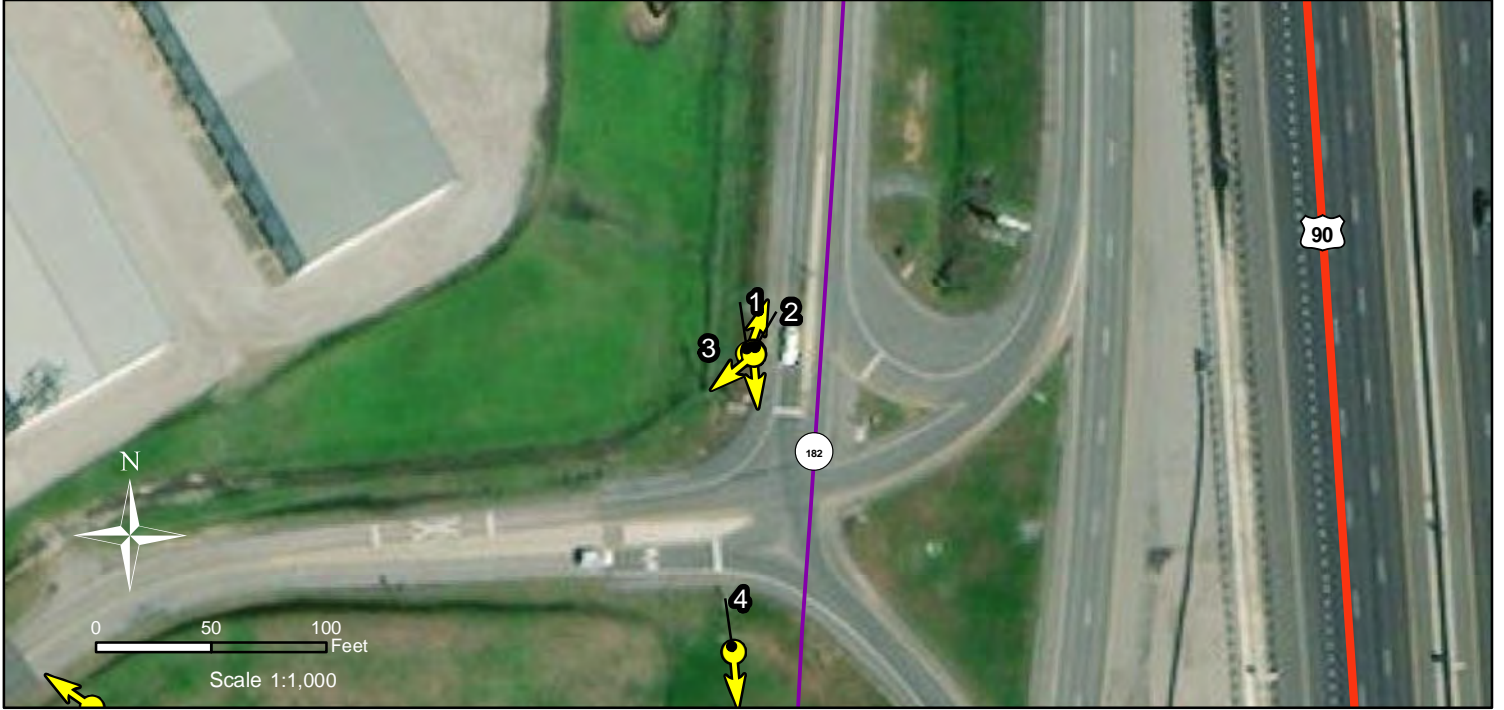
- General Notes:
1. The information presented herein is for planning purposes only. Further detailed due diligence MUST be completed prior to making decisions regarding the site.
  2. No attempt has been made by CSRS, Inc. to verify site boundary, title, actual legal ownership, deed restrictions, servitudes, easements, or other burdens on the property, other than that furnished by the client or his representative.
  3. Transportation data from 2013 TIGER datasets via U.S. Census Bureau at [ftp://ftp2.census.gov/geo/tiger/TIGER2013](http://ftp2.census.gov/geo/tiger/TIGER2013).
  4. 2015 aerial imagery from USDA-APFO National Agricultural Inventory Project (NAIP) and may not reflect current ground conditions.



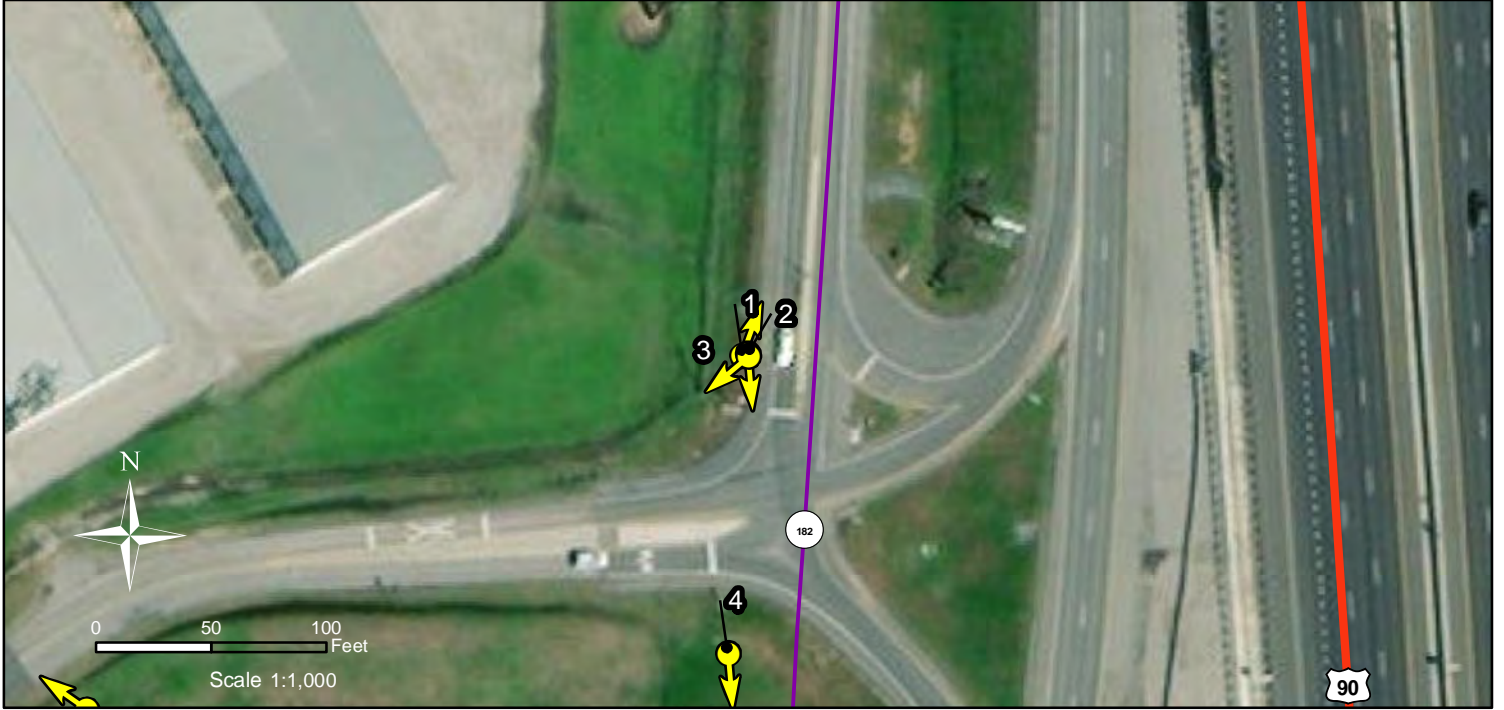
Date: 6/15/2022  
Project Number: 214002  
Drawn By: SEW  
Checked By: EEB



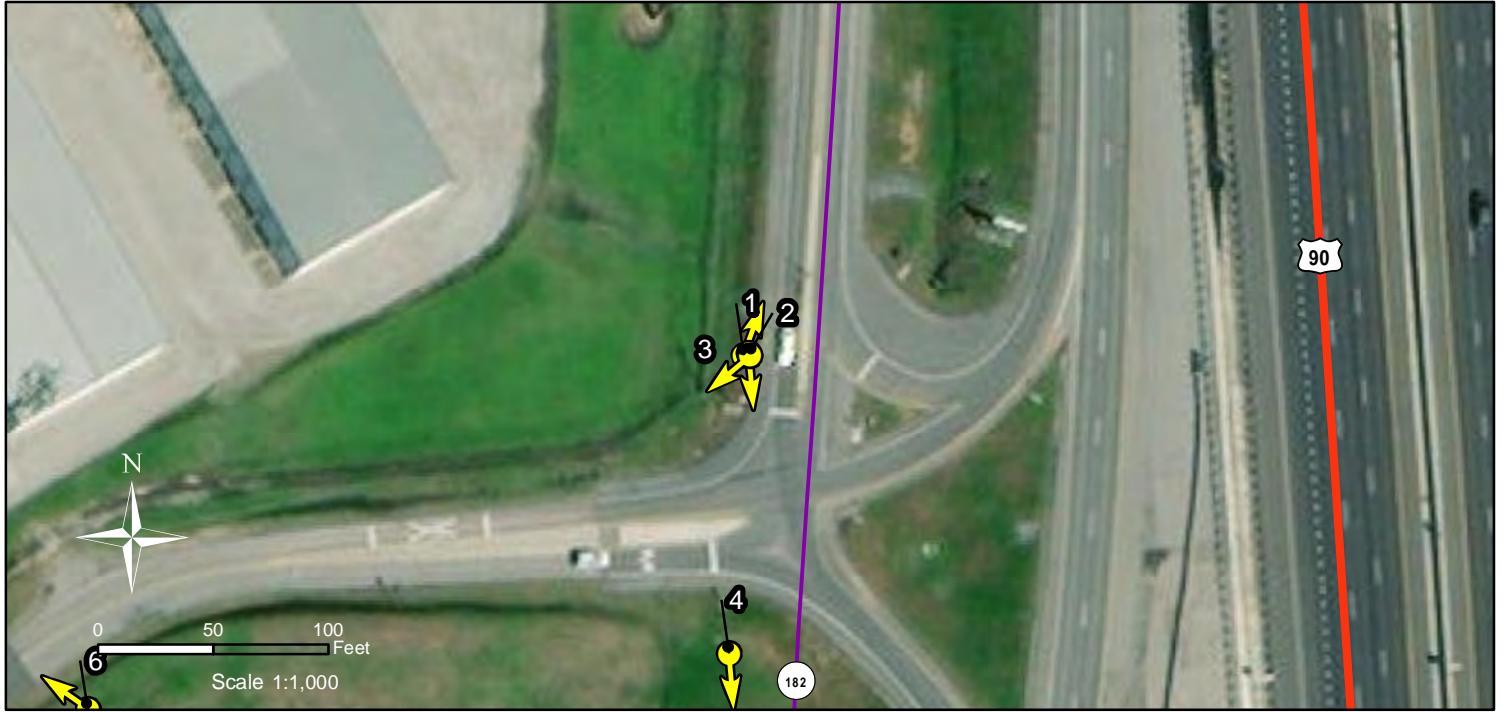
# Photo Index: 1



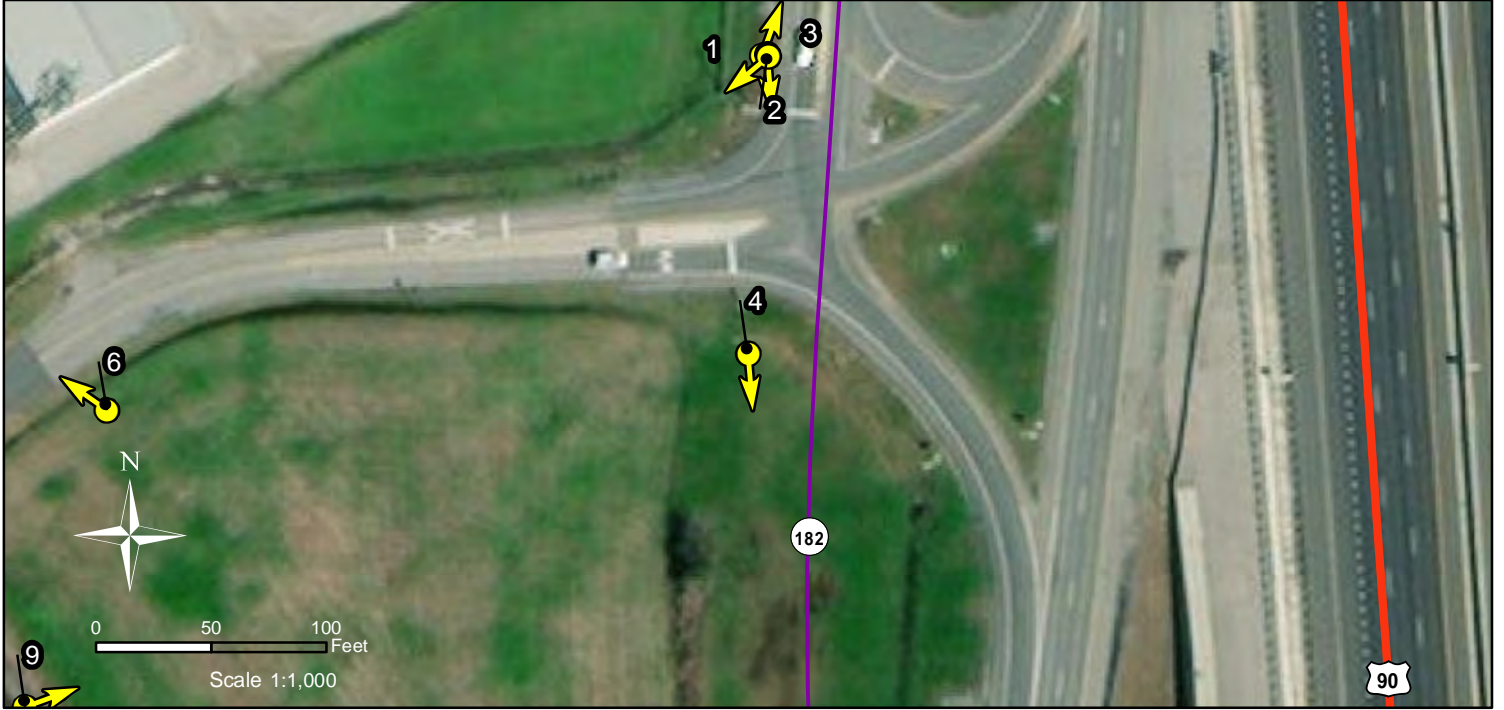
# Photo Index: 2



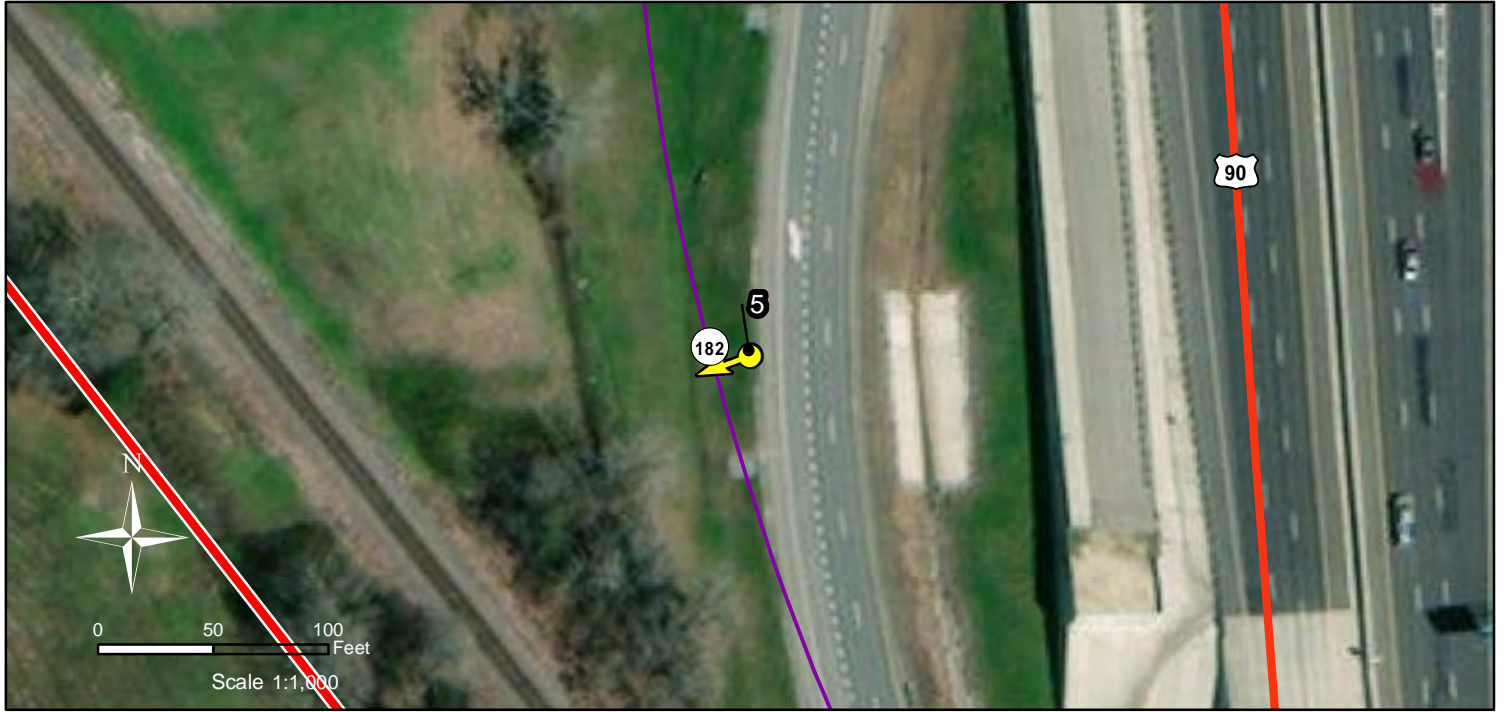
# Photo Index: 3



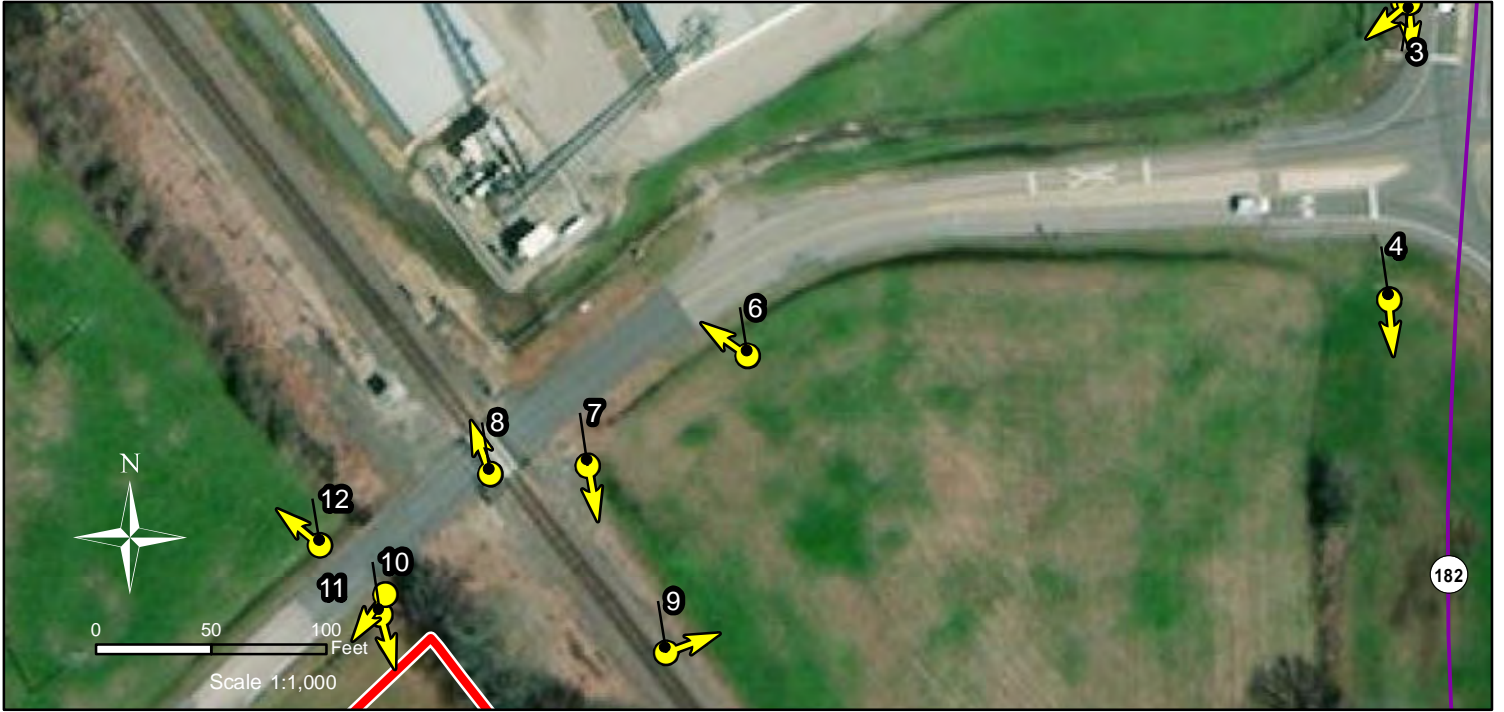
# Photo Index: 4



# Photo Index: 5

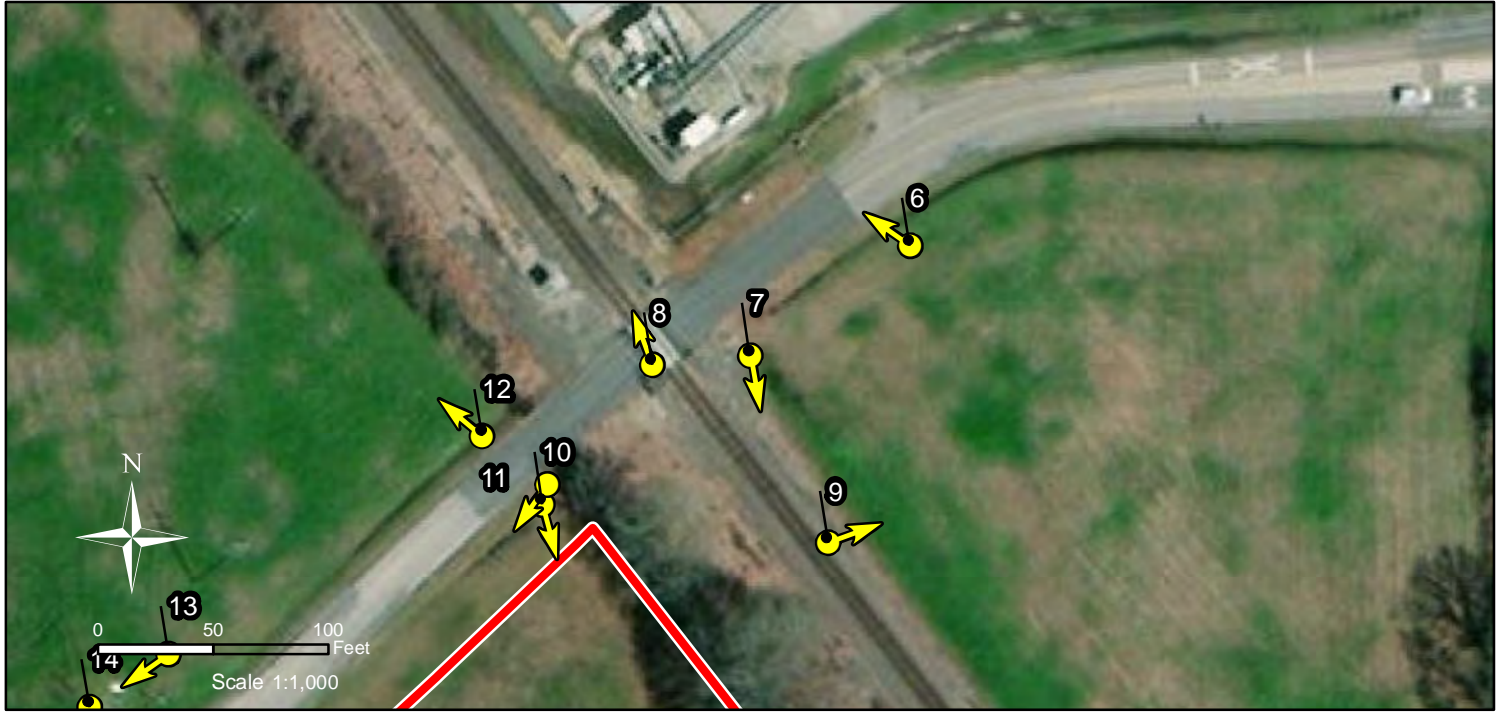


# Photo Index: 6

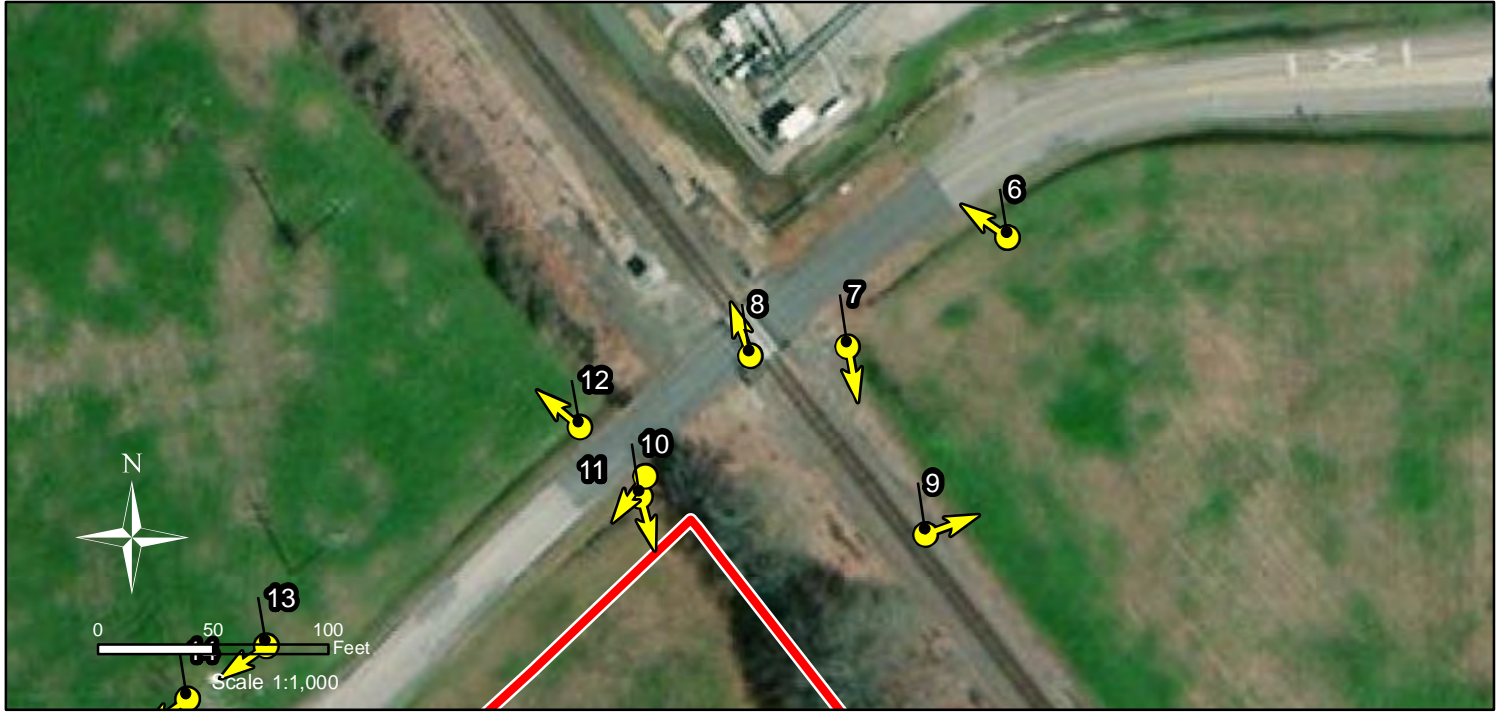




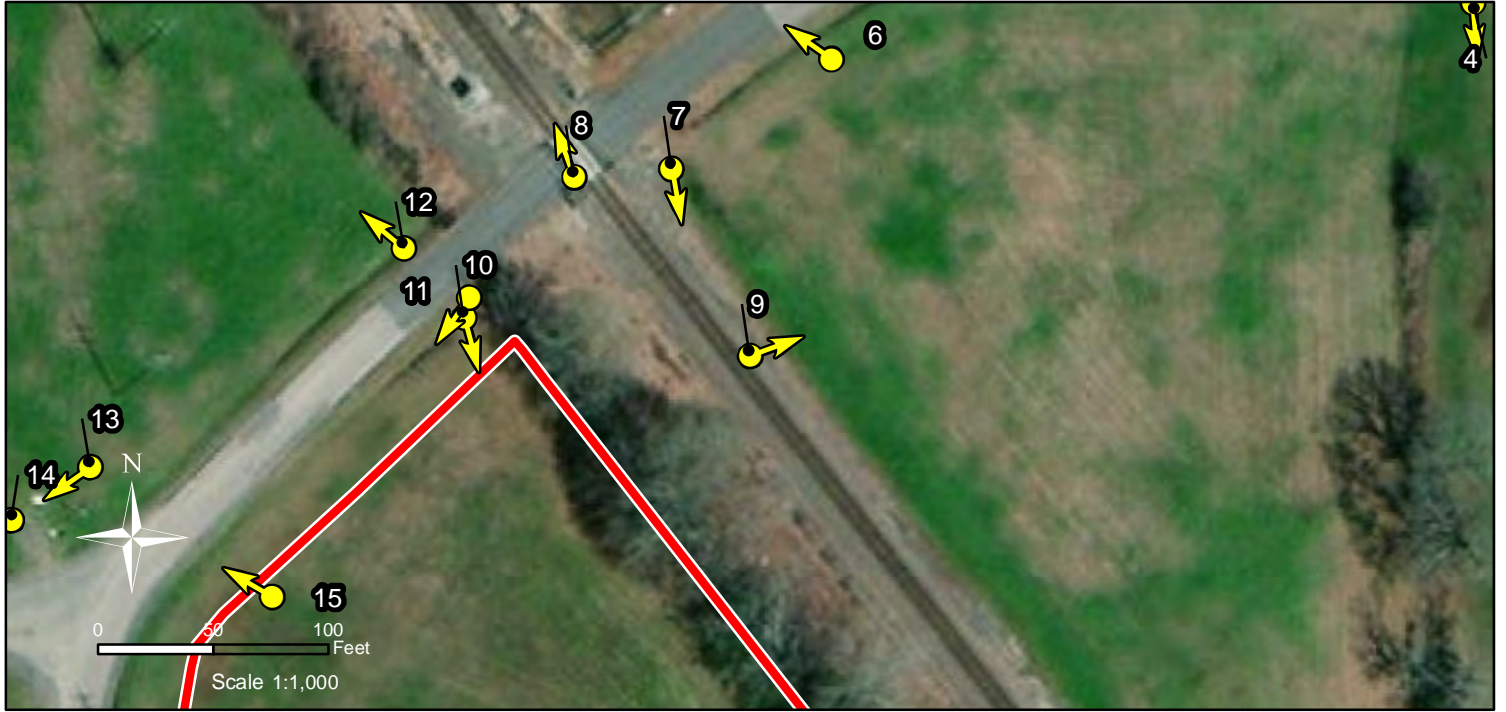
# Photo Index: 7



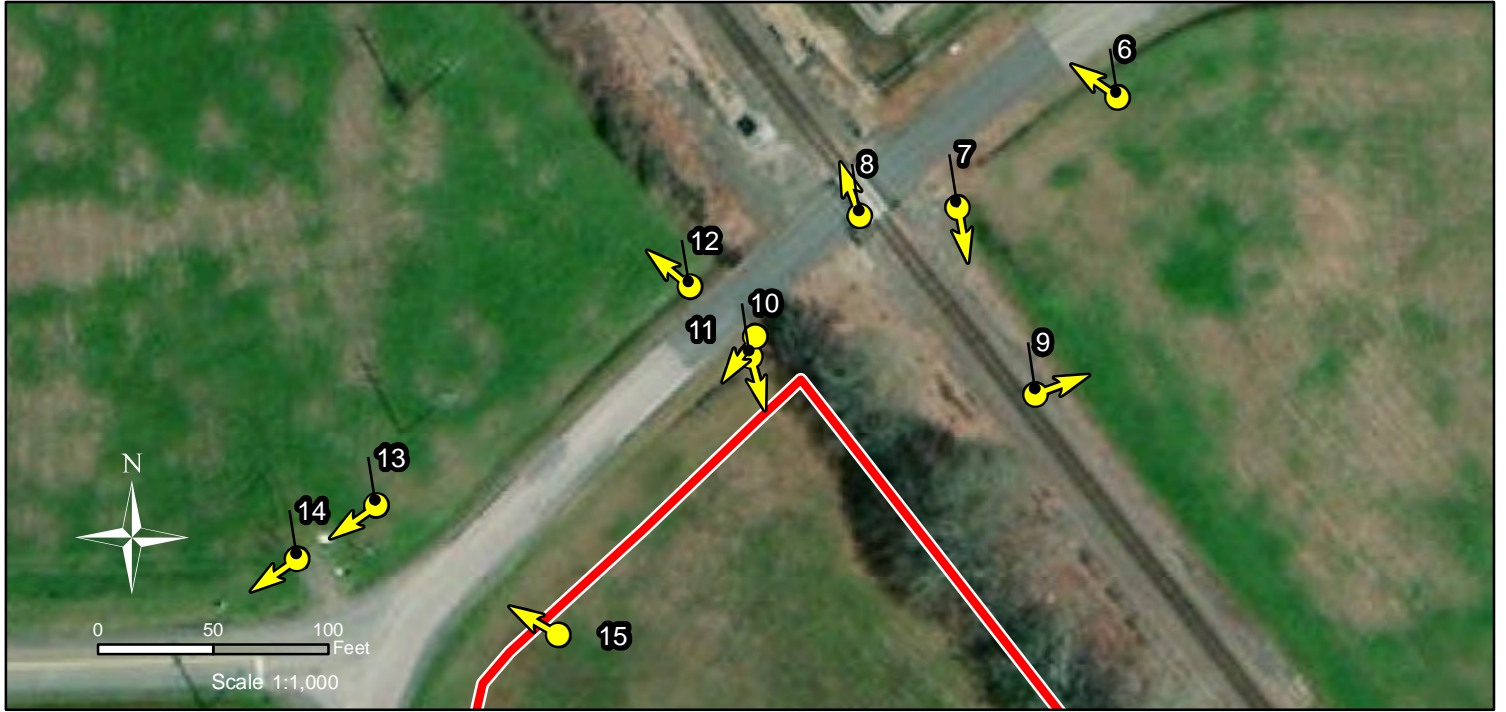
# Photo Index: 8



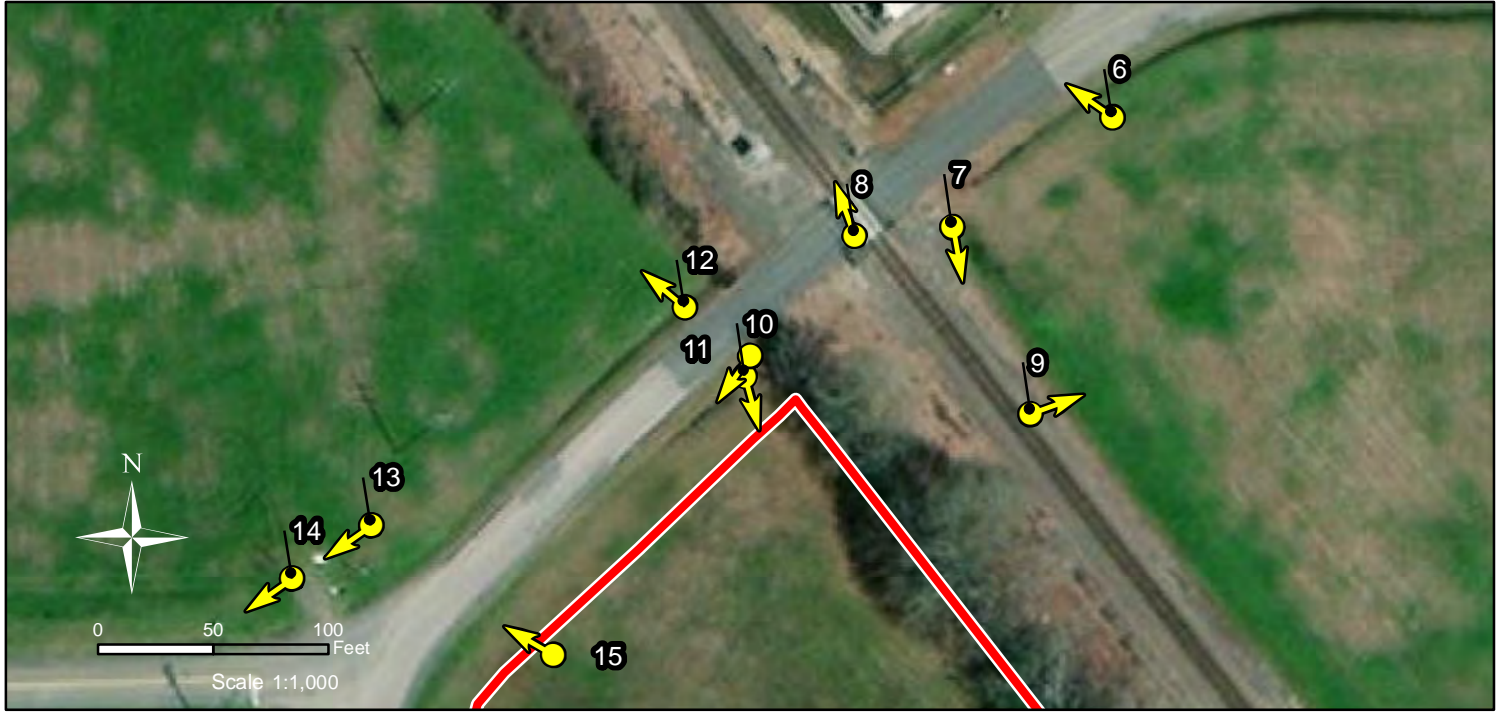
# Photo Index: 9



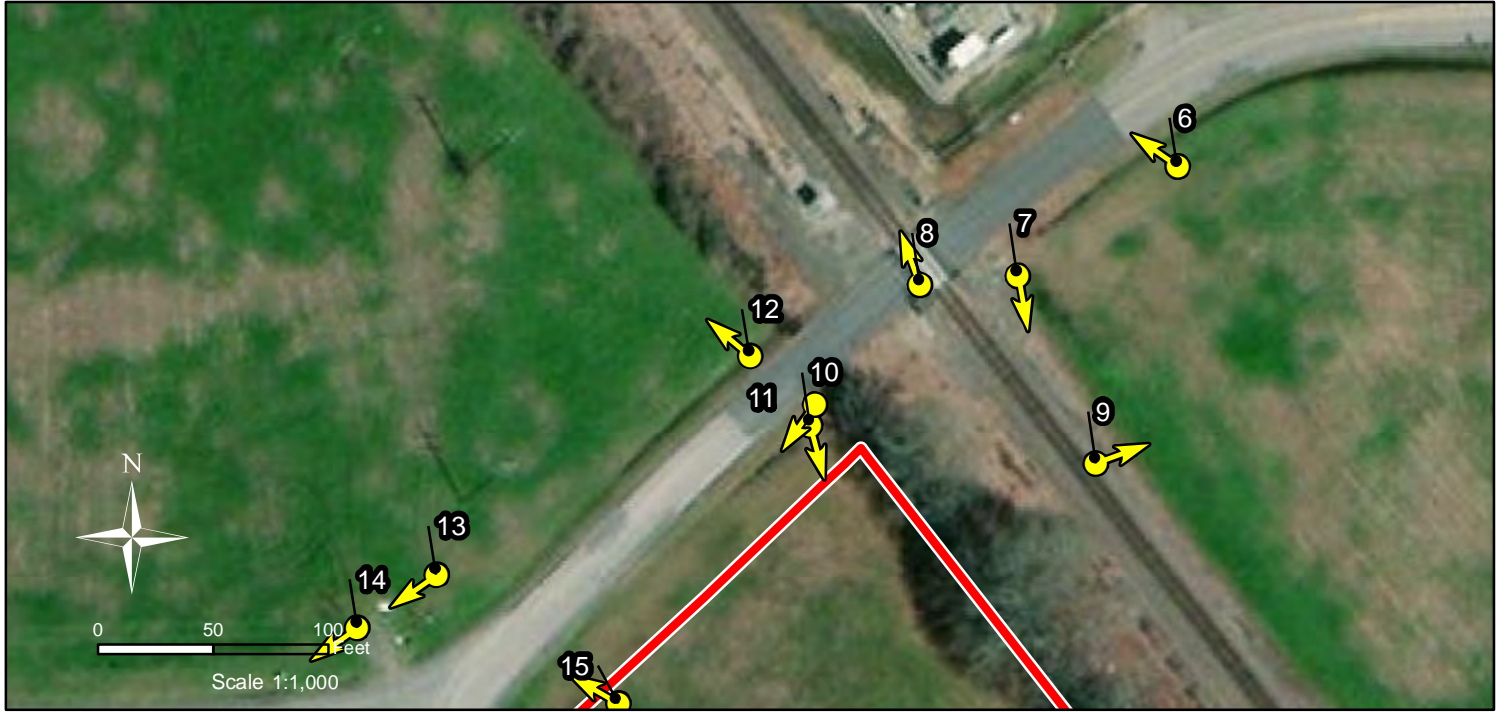
# Photo Index: 10



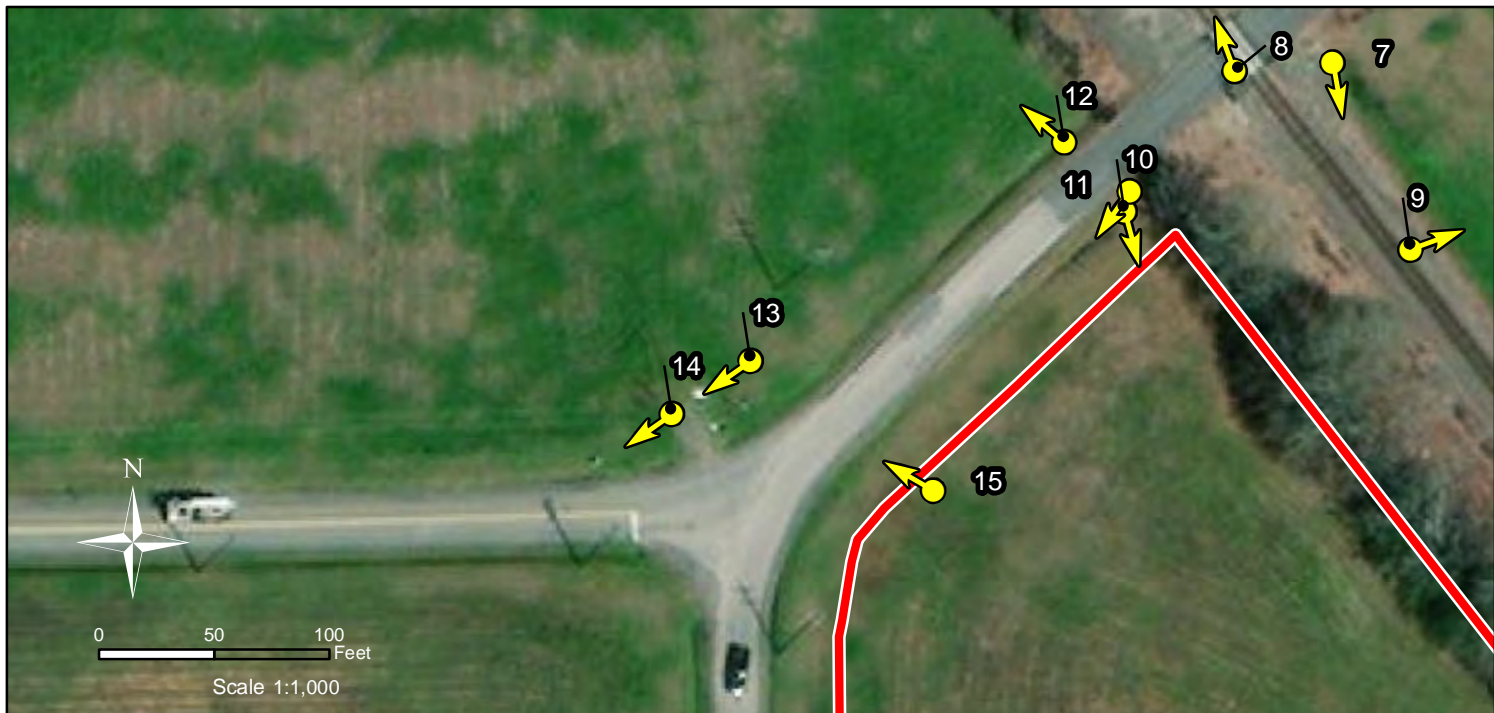
# Photo Index: 11



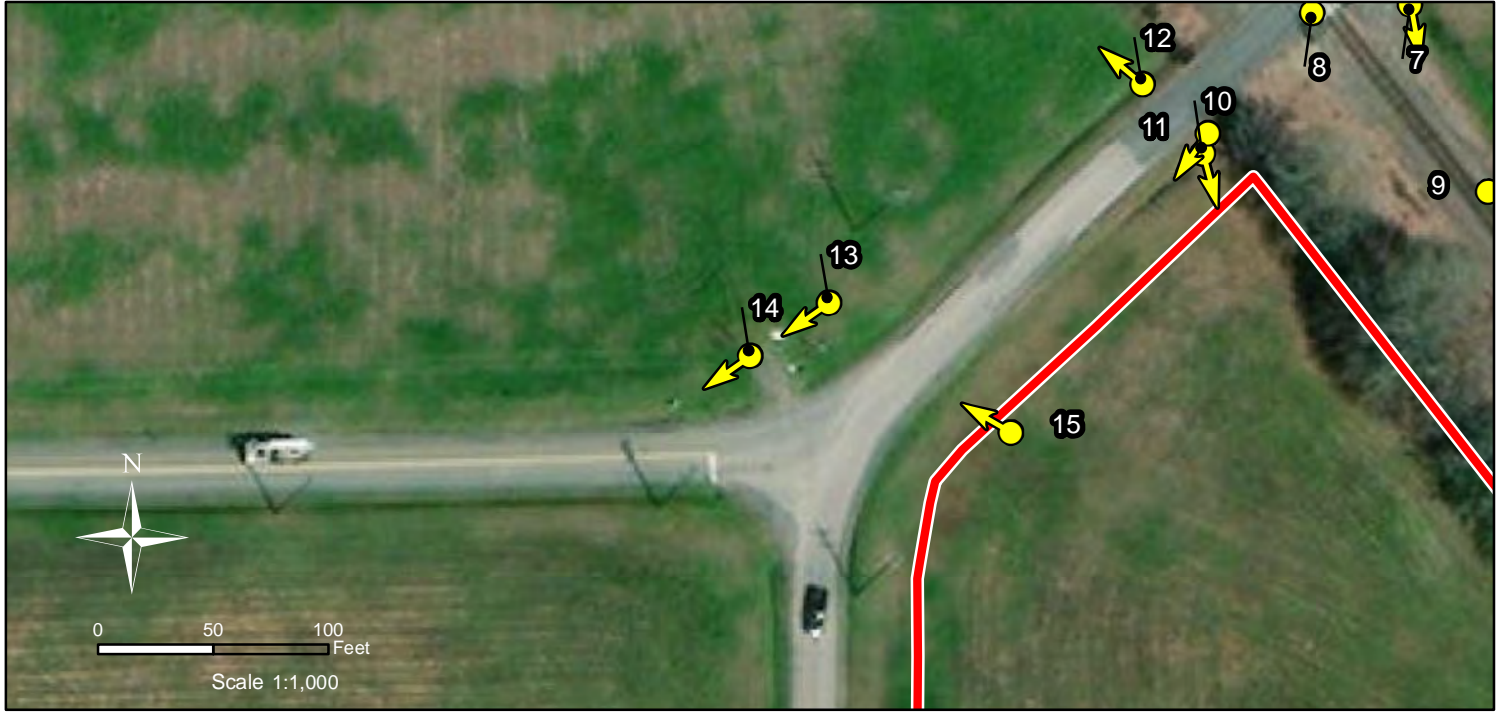
# Photo Index: 12



# Photo Index: 13

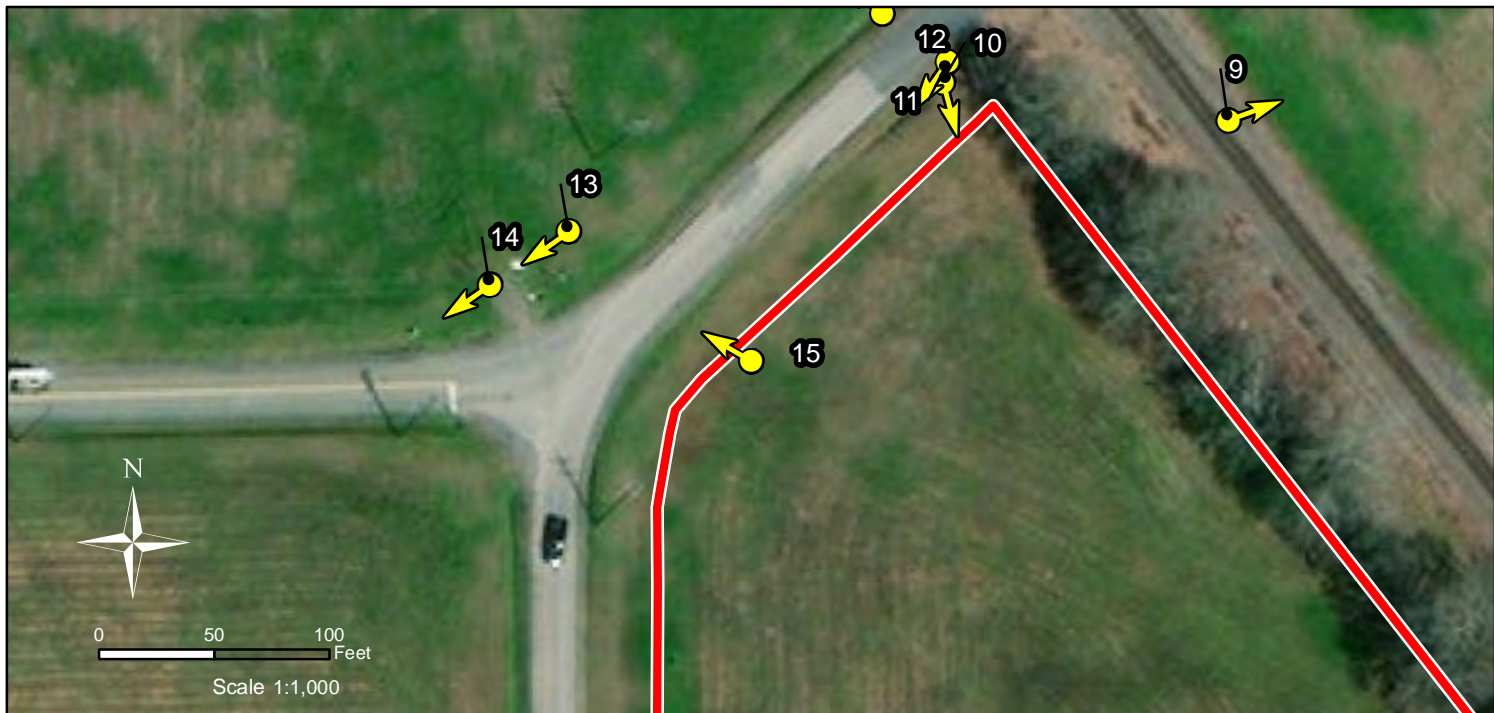


# Photo Index: 14

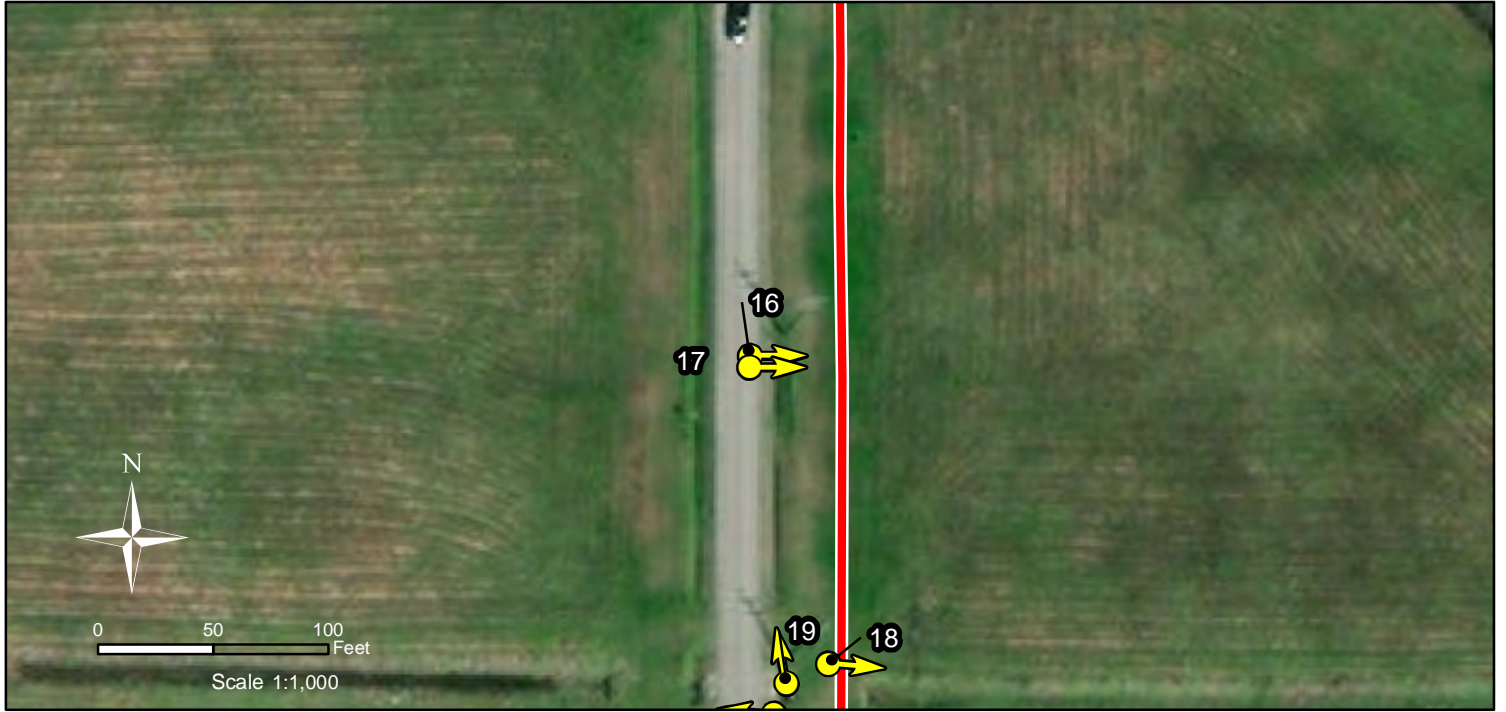




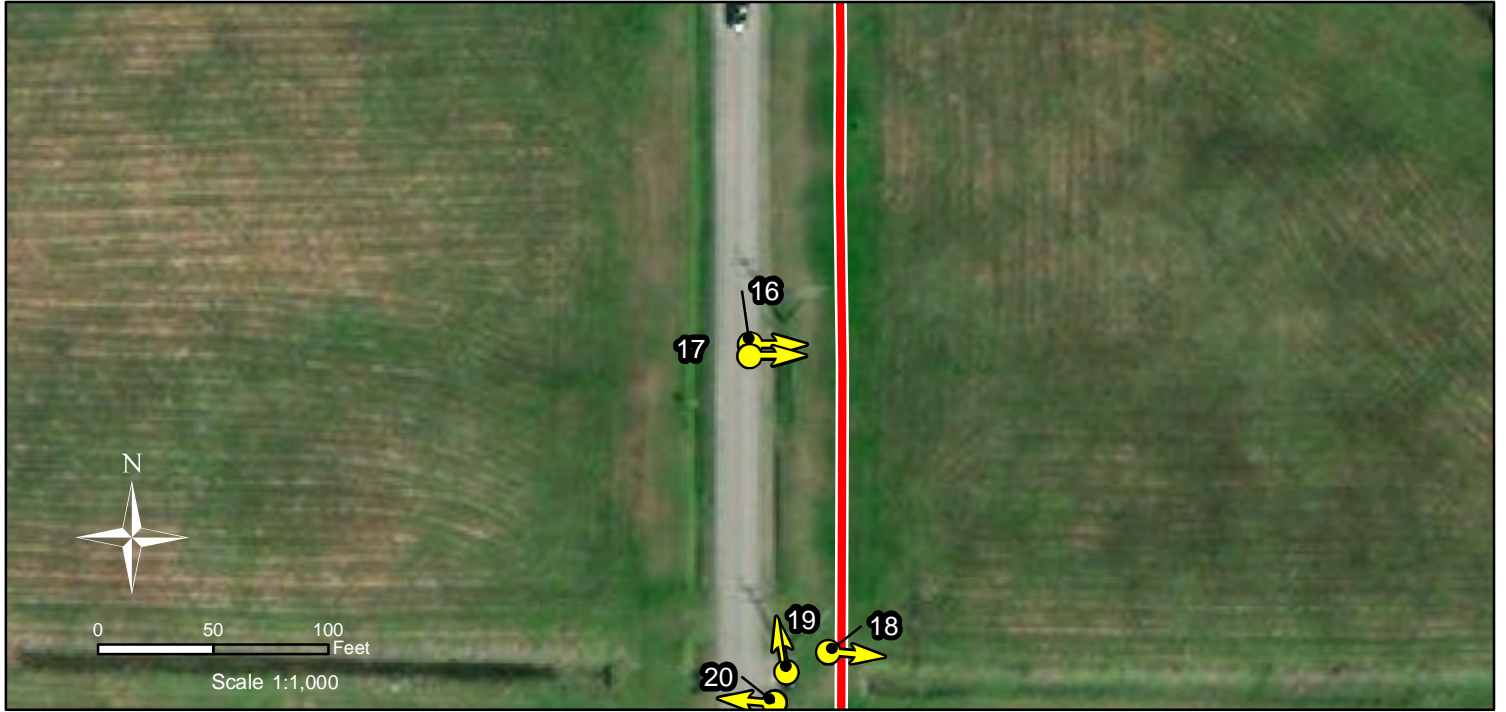
# Photo Index: 15



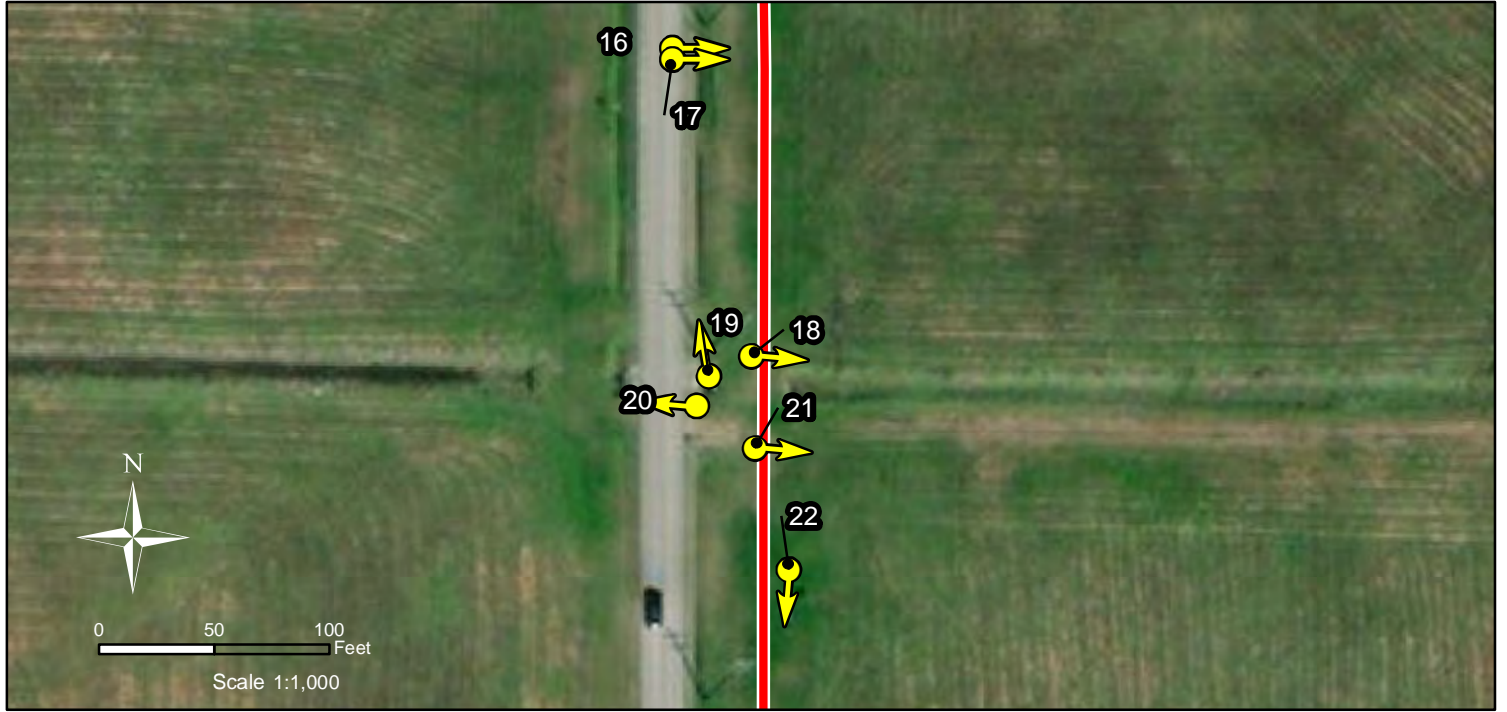
# Photo Index: 16



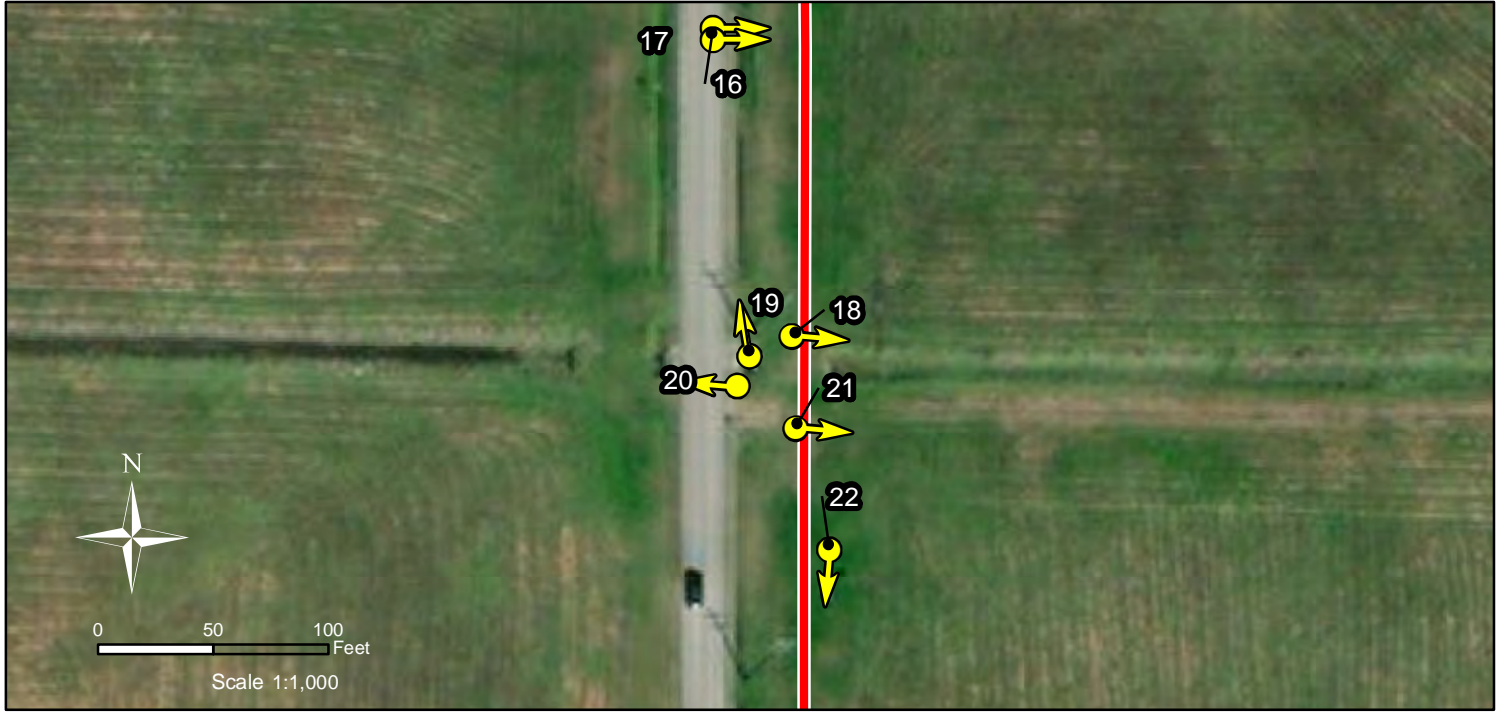
# Photo Index: 17



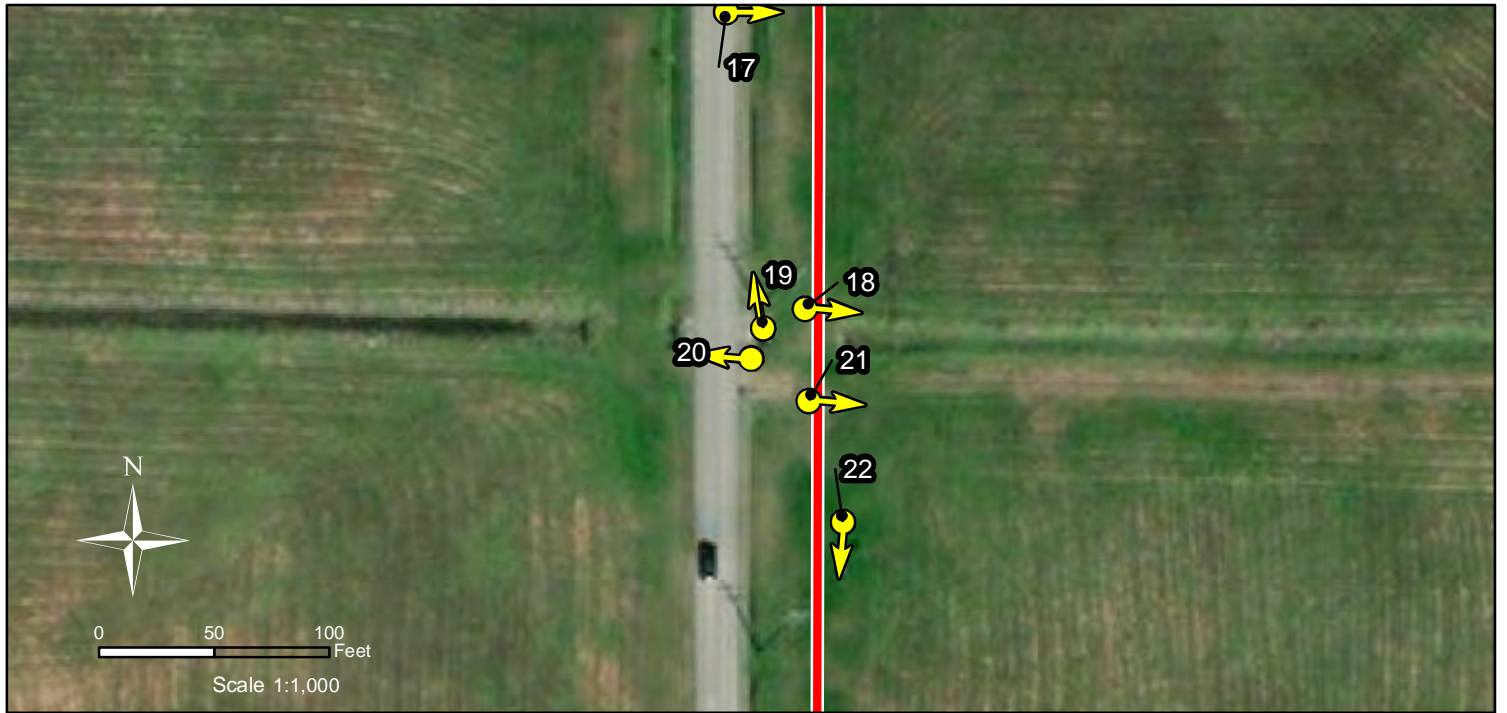
# Photo Index: 18



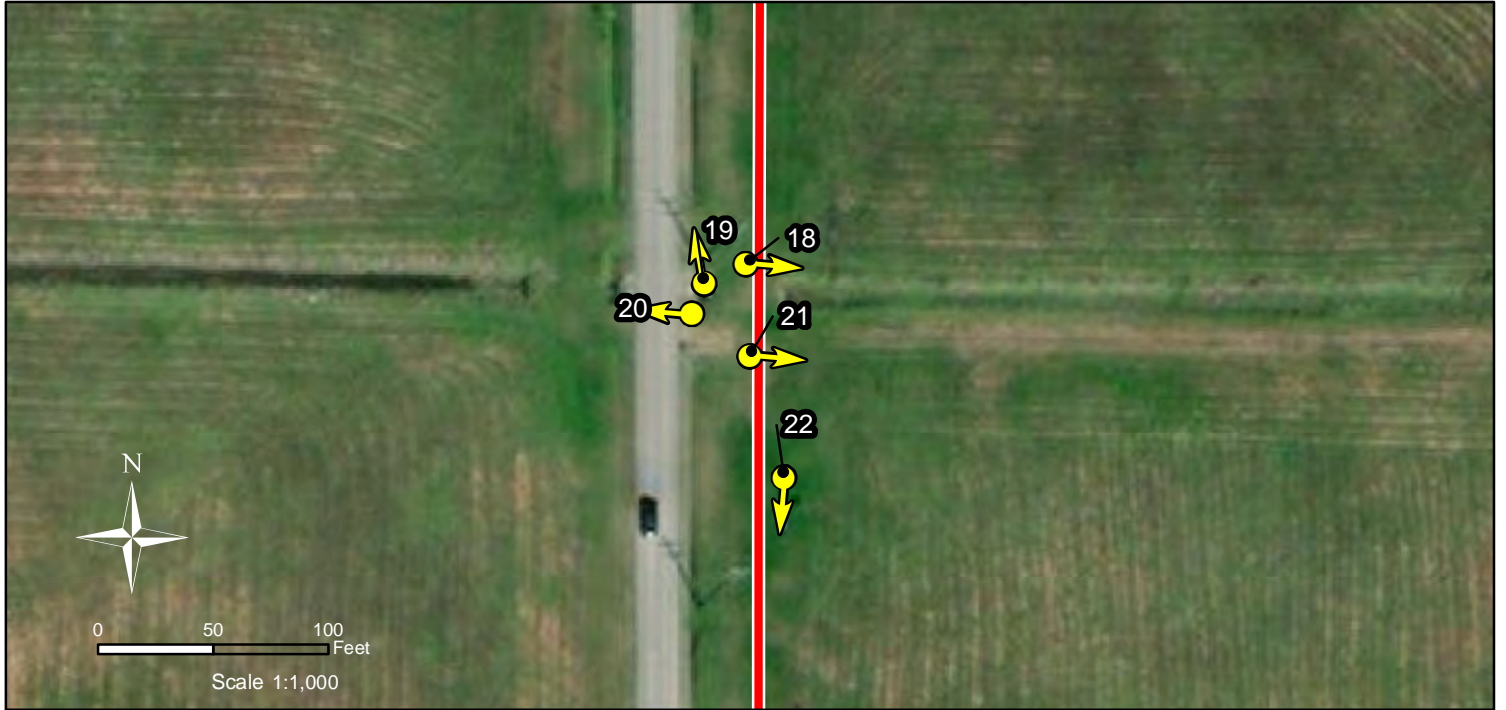
# Photo Index: 19



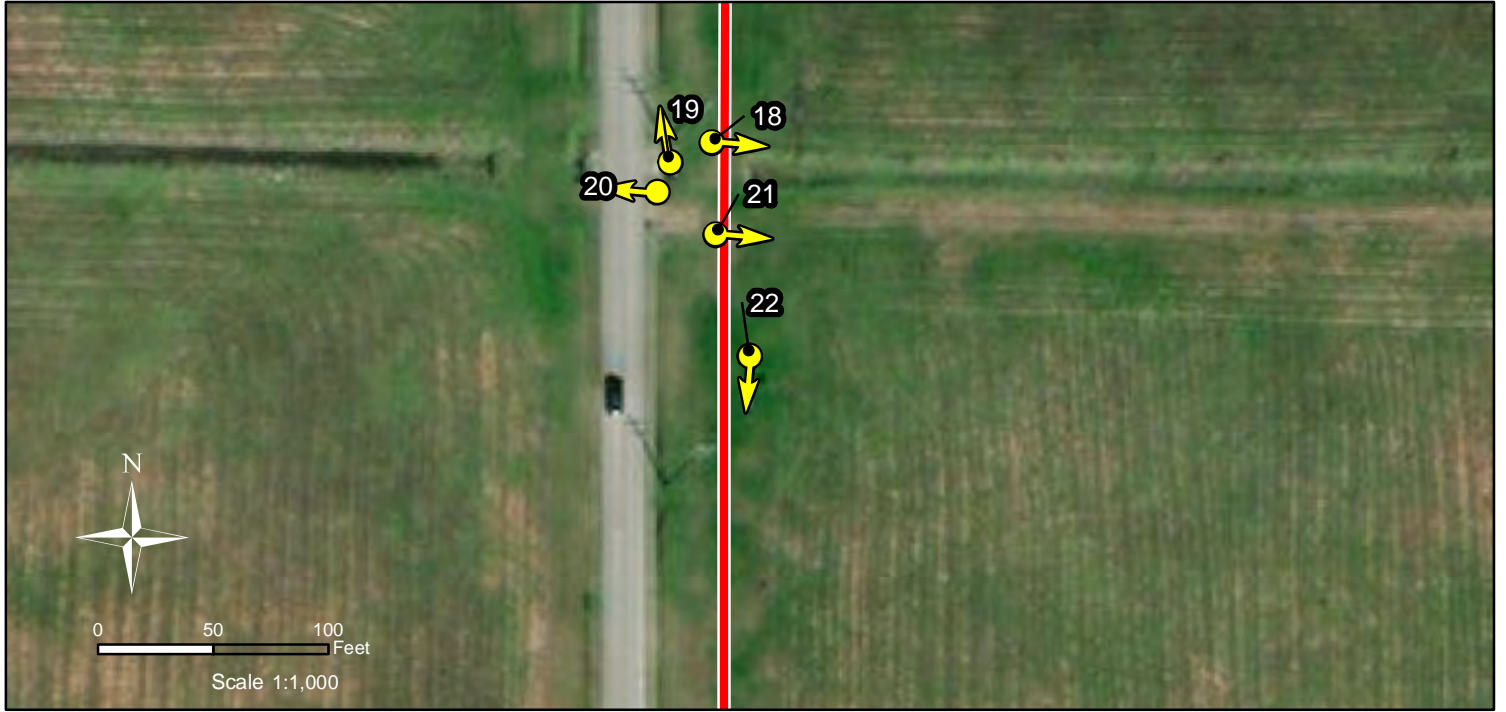
# Photo Index: 20



# Photo Index: 21

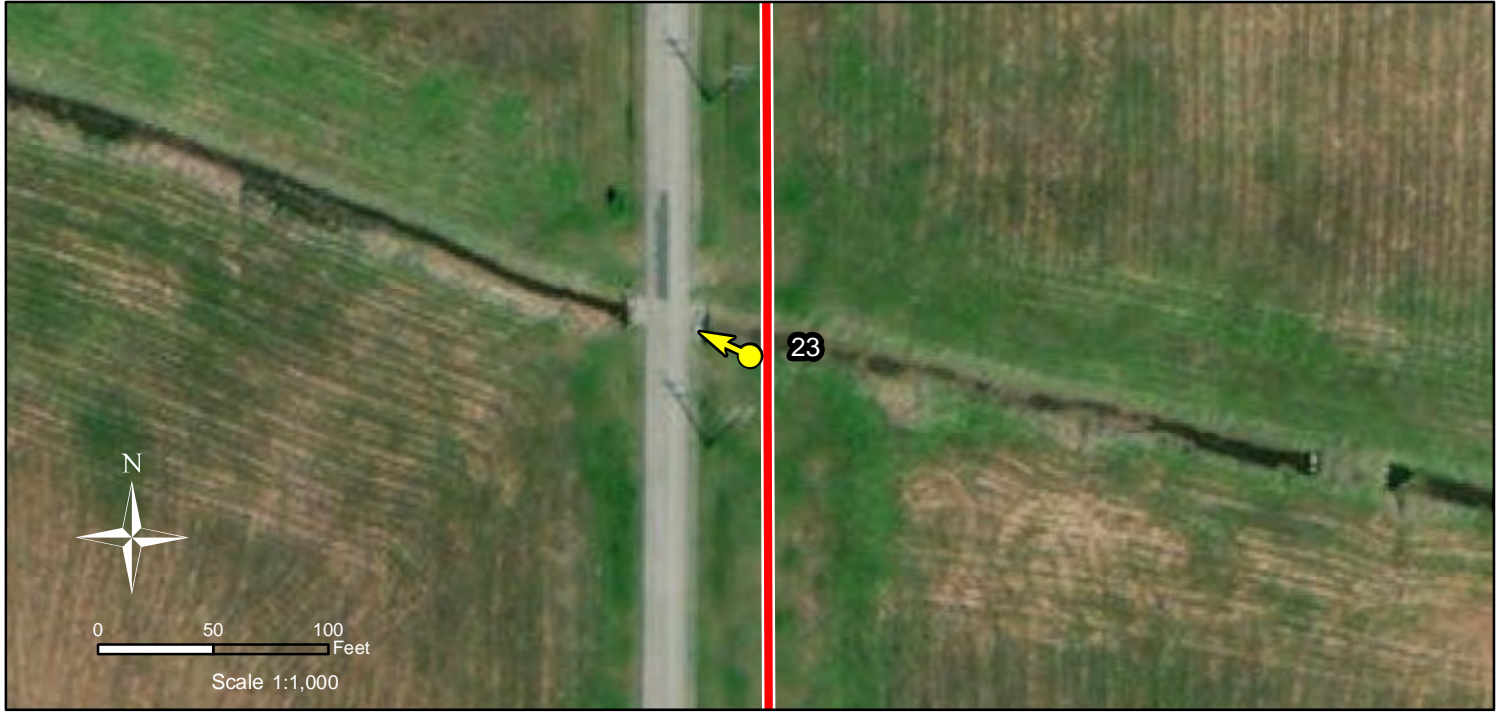


# Photo Index: 22





# Photo Index: 23



# Photo Index: 24



# Photo Index: 25



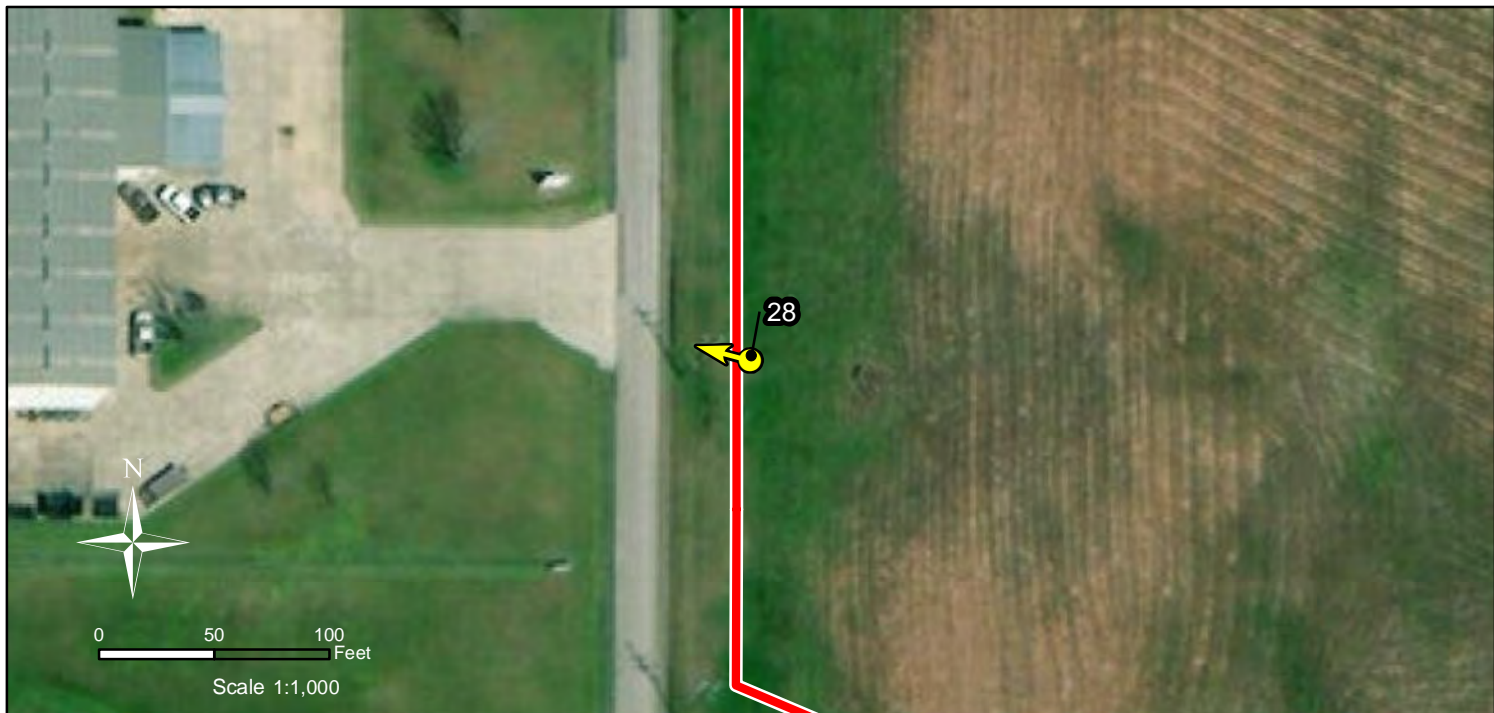
# Photo Index: 26



# Photo Index: 27



# Photo Index: 28



# Photo Index: 29



# Photo Index: 30





# Photo Index: 31

