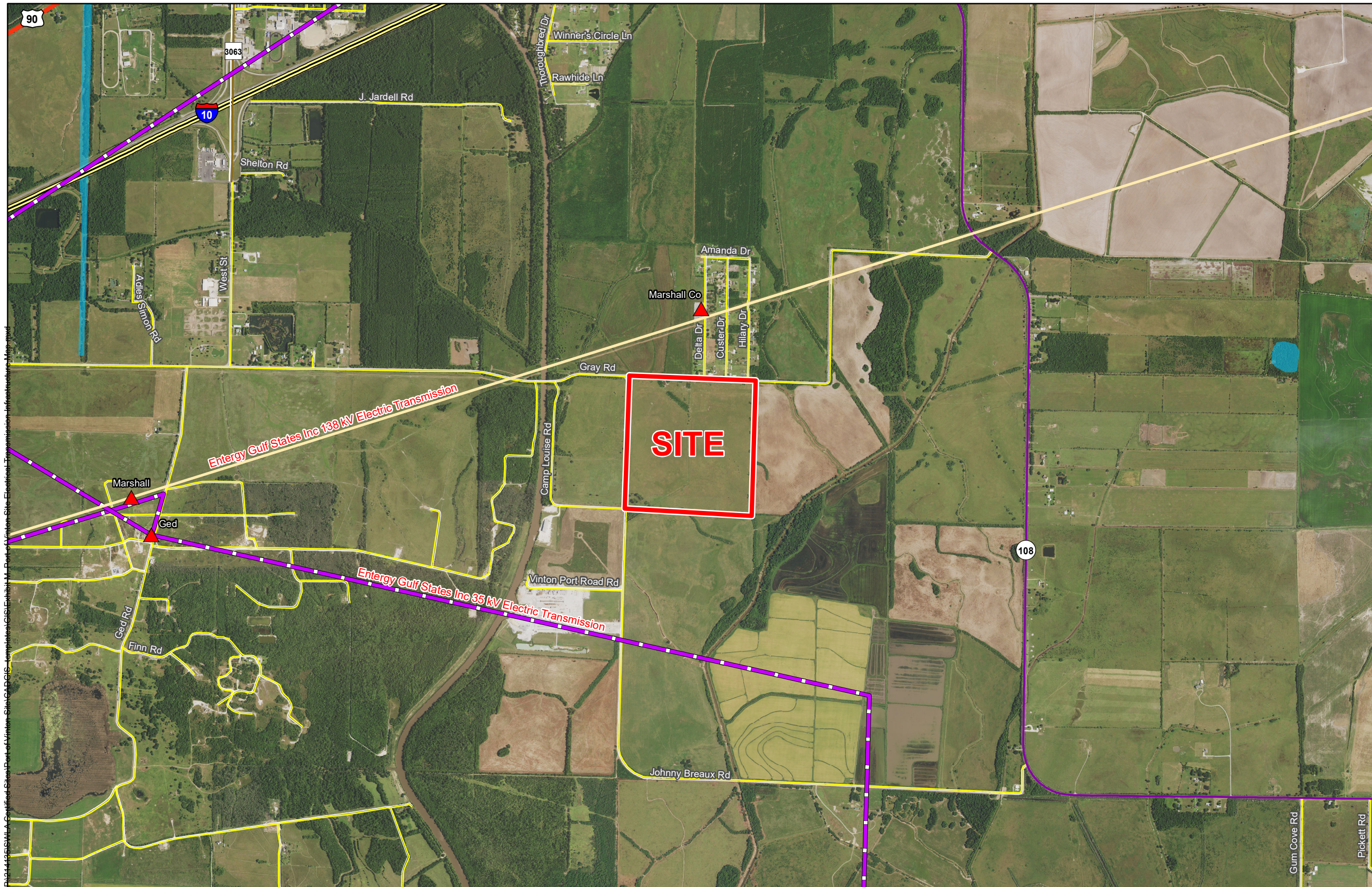


Exhibit M. Port of Vinton Site Electrical Transmission Infrastructure Map

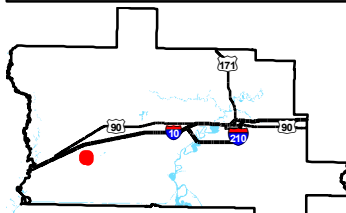
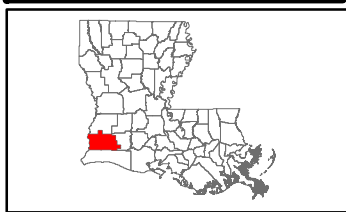


Port of Vinton Site Electrical Transmission Infrastructure Map



Existing Electric Transmission
Port of Vinton Site
Calcasieu Parish, LA

SWLA



Calcasieu Parish

LEGEND

- Site Boundary
- Existing Electrical Transmission Lines
 - 35 kV
 - 138 kV
- Substation
- Existing Roadway
 - Interstate
 - US Highway
 - Urban State Highway
 - Rural State Highway
 - Local Roads
- Stream
- Waterbody



Date: 8/20/2018
Project Number: 214135
Drawn By: DWC
Checked By: TMK



General Notes:
1. No attempt has been made by CSRS, Inc. to verify site boundary, title, actual legal ownership, deed restrictions, servitudes, easements, or other burdens on the property, other than that furnished by the client or his representative.
2. Transportation data from 2013 TIGER datasets via U.S. Census Bureau at <ftp://ftp2.census.gov/geo/tiger/TIGER2013>.
3. Utility information from visual inspection and/or the individual utility operators. Exact field location has not been determined by survey. The lines shown are an approximate representation only and may have been offset for depiction purposes.
4. 2015 aerial imagery from USDA-APFO National Agricultural Inventory Project (NAIP) and may not reflect current ground conditions.



Scale 1:24,000
0 1,250 2,500 Feet