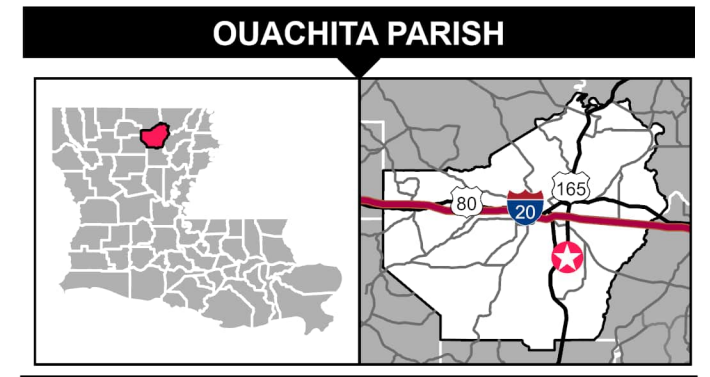
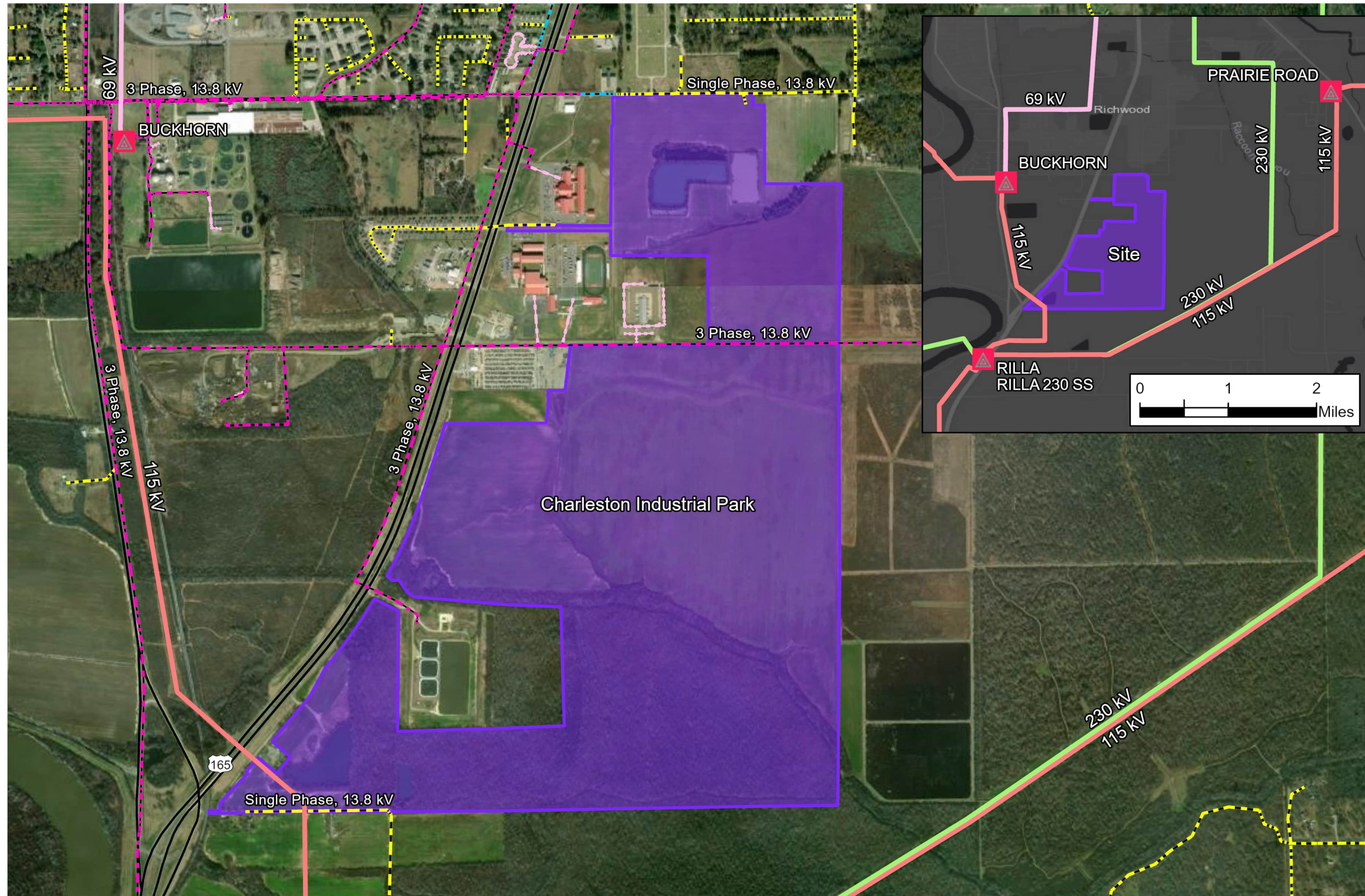



CHARLESTON INDUSTRIAL PARK



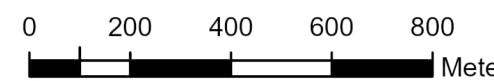
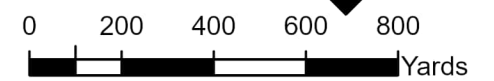
LEGEND

-  Entergy Substation
- Entergy Transmission**
 -  230 kV
 -  115 kV
 -  69 kV
- Entergy Distribution**
 -  3 Phase, Overhead
 -  2 Phase, Overhead
 -  Single Phase, Overhead
 -  Underground
- Primary Routes**
 -  U.S. Highway
 -  Charleston Industrial Park

SOURCE

Electrical Infrastructure: Entergy Services Inc., 2024.
Roads: Census/Tiger database 2021.

SCALE



Date: 1/30/2025
Created by: FM