

# Churchill Technology & Business Park

## Exhibit 27

# Soils Conservation Service Map



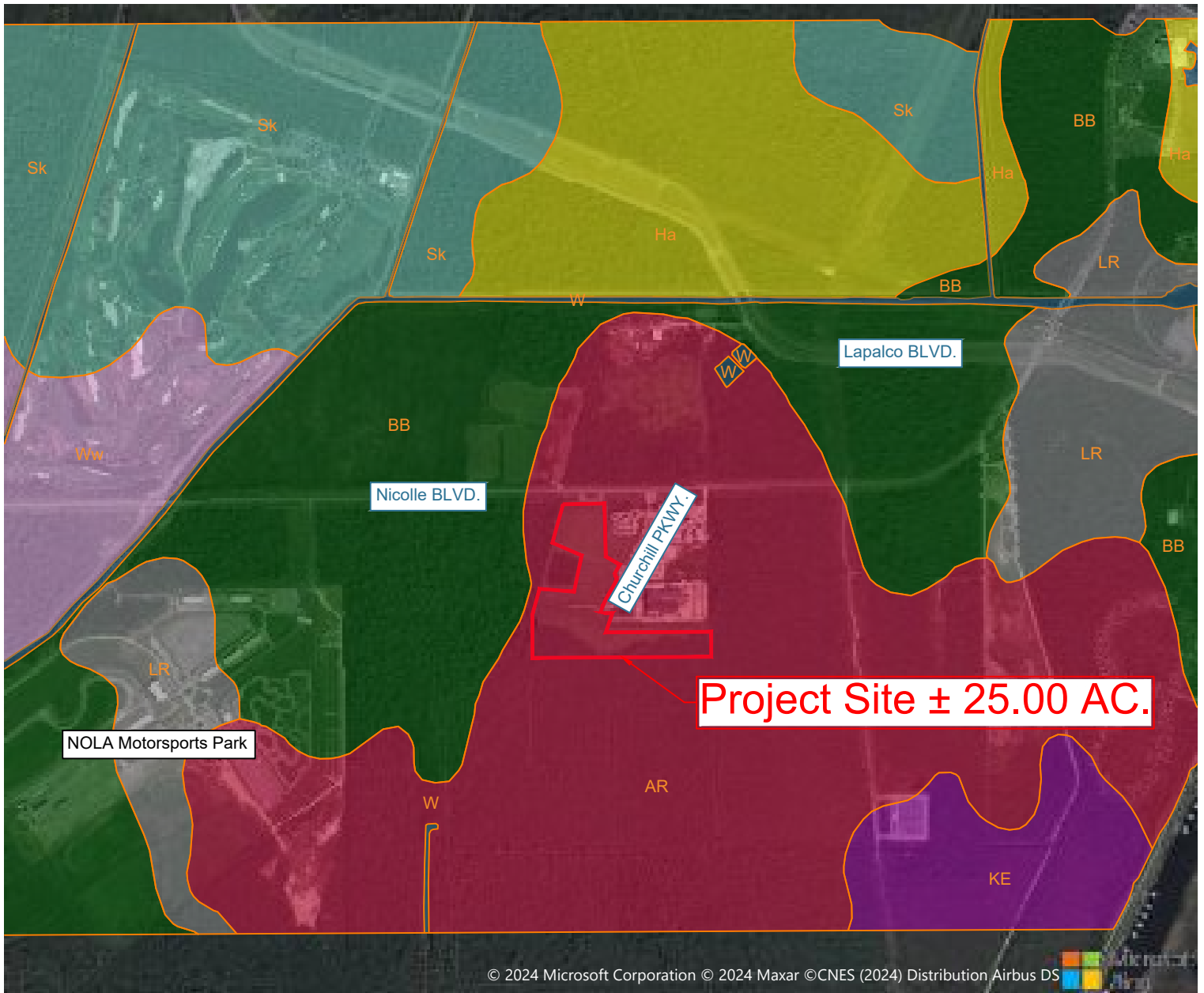
# JEDCO

Jefferson Parish Economic Development Commission



**GREATER NEW ORLEANS**  
INC  
REGIONAL ECONOMIC DEVELOPMENT

# Soils Conservation Service Map



© 2024 Microsoft Corporation © 2024 Maxar ©CNES (2024) Distribution Airbus DS

## LEGEND

AR - Allemands muck, 0 to 0.2 percent slopes, very frequently flooded



Ha -Harahana clay, 0 to 1 percent slopes



LR - Larose muck, 0 to 0.5 percent slopes, tidal



BB - Barbary muck, 0 to 1 percent slopes, frequently flooded



KE - Kenner muck, 0 to 1 percent slopes, very frequently flooded



Ww - Westwego clay, 0 to 0.5 percent slopes



Sk - Schriever clay, 0 to 1 percent slopes, rarely flooded

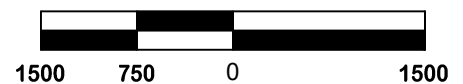


W - Water



**GREATER NEW ORLEANS**  
INC  
REGIONAL ECONOMIC DEVELOPMENT

SCALE IN FEET



**Churchill Technology  
and Business Park**

Avondale, LA 70094  
Jefferson Parish



PROJECT NO. 23-1544  
09-05-2024  
CHECKED BY SMT  
DRAWN BY JPO

