

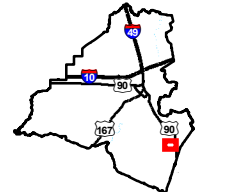
Exhibit V. AC Commercial Site U.S. Geological Survey Quad Map



AC Commercial Site U.S. Geological Survey Quad Map


AC Commercial Site
Lafayette Parish, LA

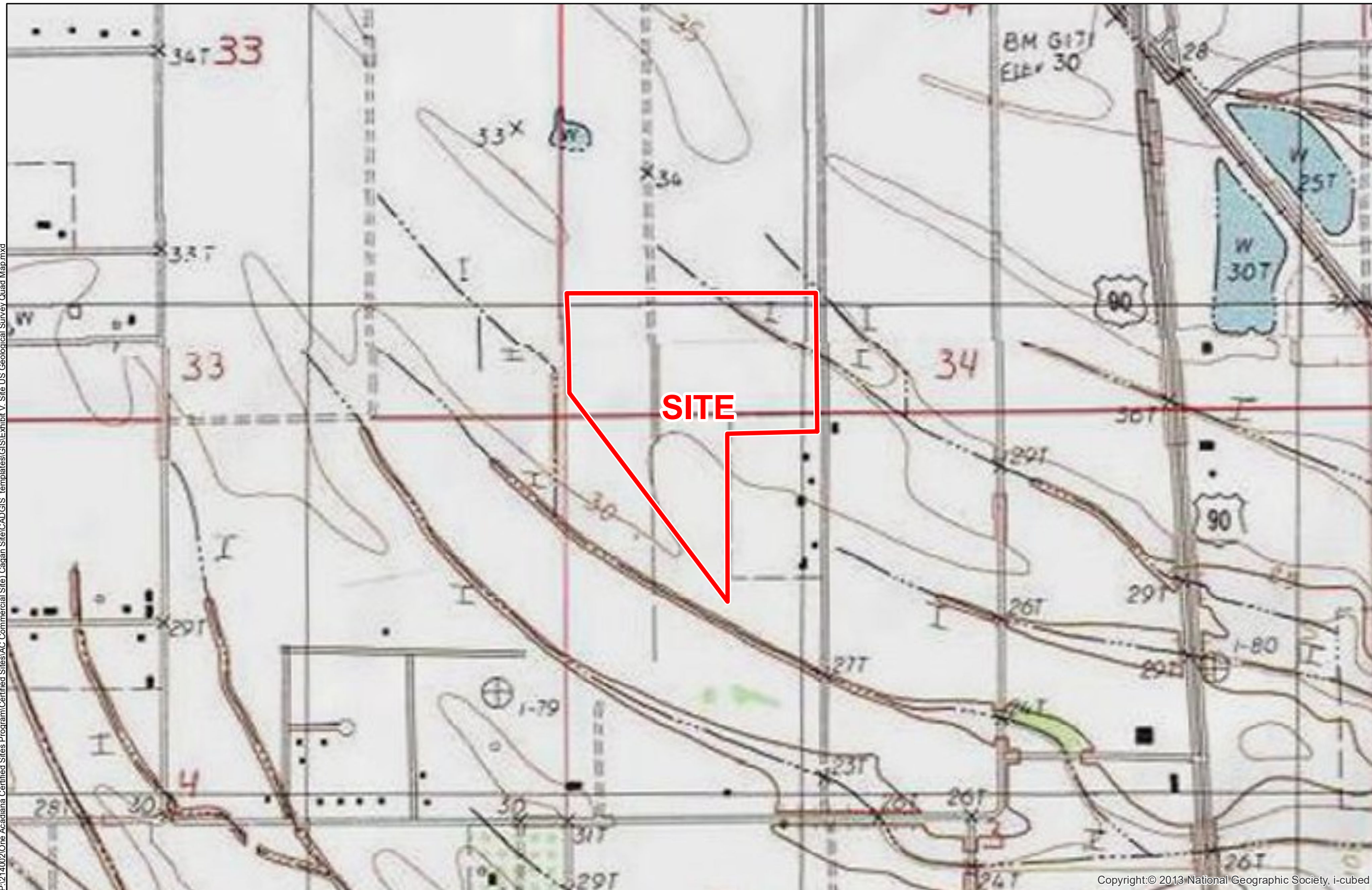
One Acadiana



Lafayette Parish

LEGEND

 Site Boundary
(44.94 Ac.±)

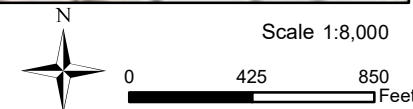


P:\214002\One Acadiana Certified Sites Program\Certified Sites\AC Commercial Site\Cadman Site\CAD\GIS templates\GIS\Exhibit V. Site U.S. Geological Survey Quad Map.mxd

Copyright:© 2013 National Geographic Society, i-cubed

General Notes:

1. No attempt has been made by CSRS, Inc. to verify site boundary, title, actual legal ownership, deed restrictions, servitudes, easements, or other burdens on the property, other than that furnished by the client or his representative.
2. Topo data and symbologies from USDA NRCS site <http://datagateway.nrcs.usda.gov/GDGOrder.aspx> as created by USDA/NRCS National Geospatial Center of Excellence "USDA-NRCS-NCGC Digital Raster Graphic MrSID Mosaic".



Date:	7/7/2021
Project Number:	214002
Drawn By:	SEW
Checked By:	EEB

