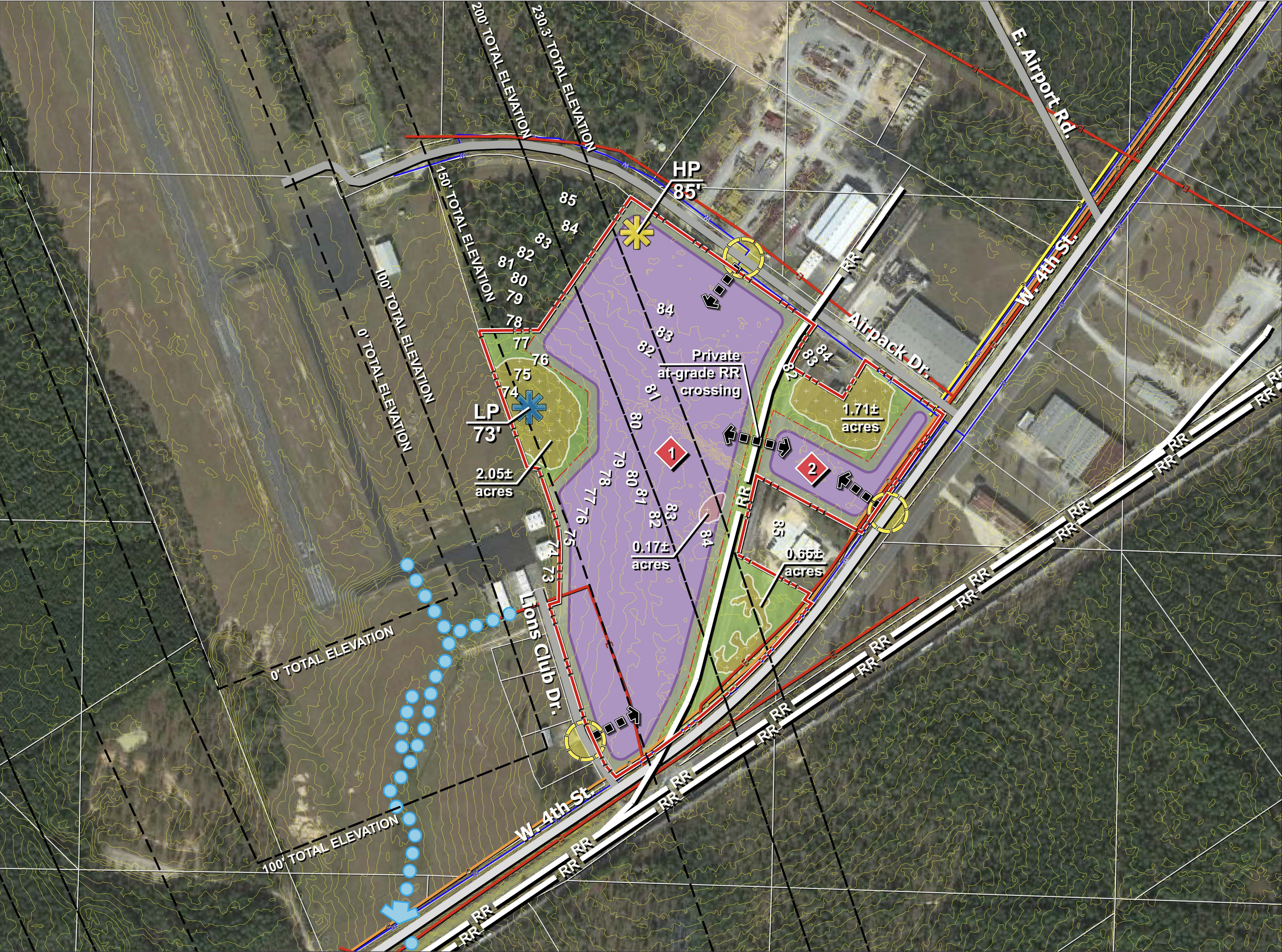


Exhibit JJ. Dequincy Industrial Park Executive Summary & Buildable Area Exhibit



DEQUINCY INDUSTRIAL PARK SITE



Legend

- Site Boundary (42.79 ± Acres)
- Developable Area (w/ minimal wetland impact) (Total: 32.01 ± Acres)
- Industrial yard/warehouse area (28.26 ± Acres)
- Office area (3.75 ± Acres)
- Calcasieu Parish Parcel Data
- Existing Major Road
- Existing Minor Road
- Existing Railroad
- Approximate Electrical Line
- Approximate Water Line
- Approximate Gas Line
- Approximate Telecom Line
- Cone-of-influence Total Elevation Lines
**NOTE: building height allowed is calculated by subtracting the proposed Finished Floor Elevation (FFE) from the noted total elevations allowed. The cone is a gradient, starting at 0' total elevation and going to 230.3' total elevation. Please refer to "Airport Airspace Drawing - Runway 16-34" dated September 2017 for Dequincy Industrial Airpark for more information)
- Potential Wetlands (4.92± Acres total, 0.17± acres affect)
- Proposed Site Access Points
- Proposed Site Access Drives
- Existing Drainage Way
- Site High Point HP 85'
- Site Low Point LP 73'

Notes:

- The proposed project area has not been verified with a field survey.
- Elevation data shown is derived from LiDAR via www.atlas.lsu.edu. LiDAR elevations shall be considered preliminary and are for planning purposes only. An on the ground or aerial topographic survey must be conducted to determine actual ground elevations.
- Further engineering design is required to determine stormwater management requirements.

Dequincy Industrial Park Site
Calcasieu Parish, Louisiana | May 2019

NOTE:
ILLUSTRATION IS CONCEPTUAL ONLY AND IS SUBJECT TO CHANGE BASED UPON FURTHER DETAILED ANALYSIS, ENGINEERING DESIGN, AND FINAL APPROVAL. CSRS IS NOT LIABLE FOR THE USE OR MISUSE, MISINTERPRETATION, OR ERRORS IN ANY CALCULATIONS DERIVED FROM ILLUSTRATED CONCEPTUAL LAYOUT.

Potential Developable Area
SCALE: 1"= 200' (22" x 34")

6767 Perkins Road Suite 200 Baton Rouge, LA 70808
Telephone: 225 769-0546 Fax: 225 767-0060
www.csronline.com