

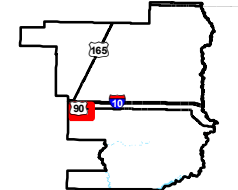
Exhibit V. Allen Estates North Site National Wetlands Inventory Map



Allen Estates North Site National Wetlands Inventory Map

National Wetlands Inventory
Allen Estates North Site
Jefferson Davis Parish, LA

One Acadiana



Jefferson Davis Parish

LEGEND

- Site Boundary (561.51 Ac. ±)
- Wetland Type**
- Freshwater Pond
- Riverine
- Existing Roadway**
- Interstate
- US Highway
- Rural State Highway
- Local Roads
- Railroad

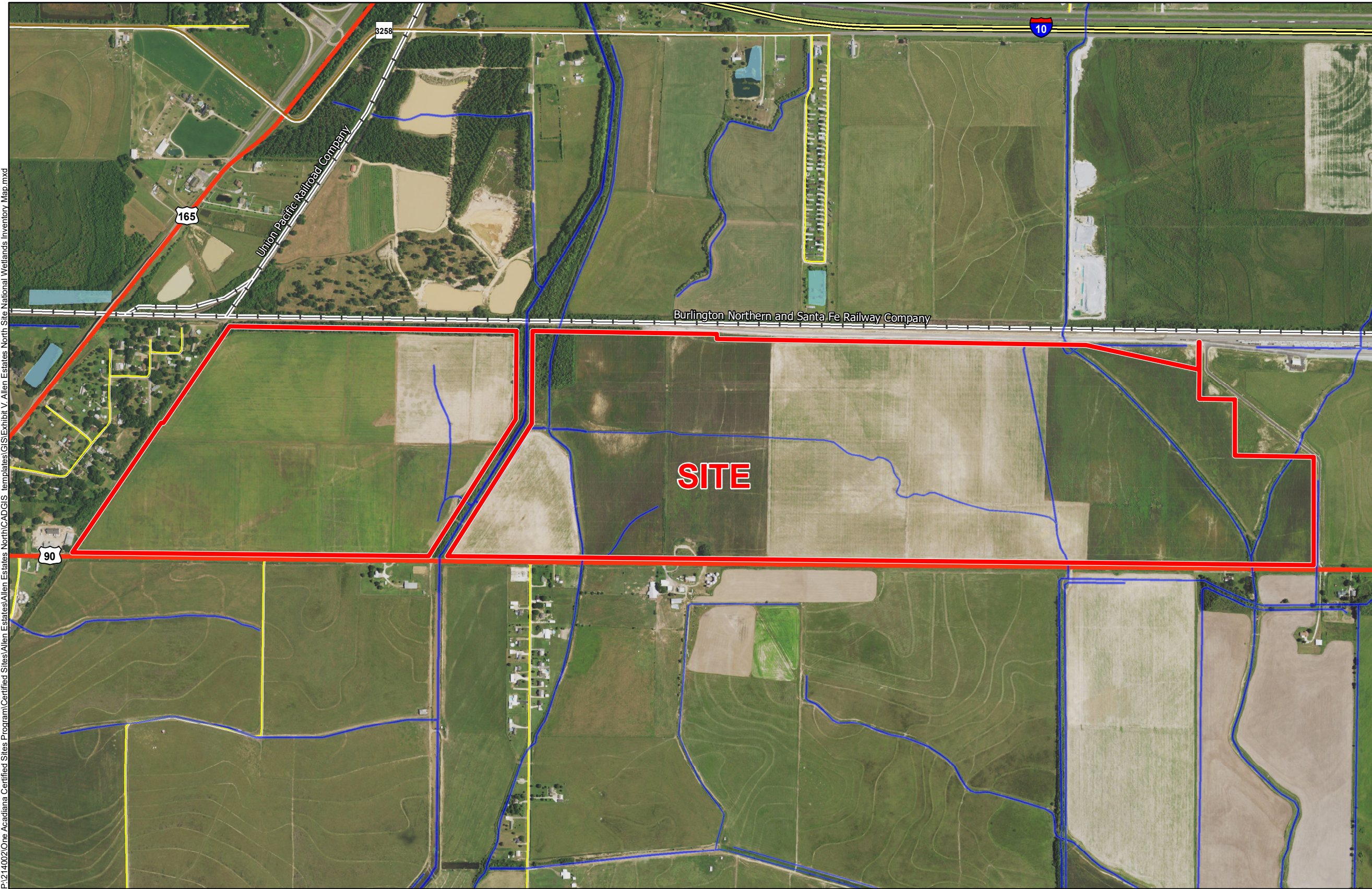
Site Details

Appx. Site Size: 561.51 Ac. ±
Pre-JD Wetlands: 7.52 Ac. ±



Date:	1/16/2017
Project Number:	214002
Drawn By:	TMK
Checked By:	JAY

P:\214002\One Acadiana Certified Sites Program\Certified Sites\Allen Estates North\CAD\GIS templates\GIS\Exhibit V Allen Estates North Site National Wetlands Inventory Map.mxd



General Notes:

1. No attempt has been made by CSRS, Inc. to verify site boundary, title, actual legal ownership, deed restrictions, servitudes, easements, or other burdens on the property, other than that furnished by the client or his representative.
2. Transportation data from 2013 TIGER datasets via U.S. Census Bureau at <ftp://ftp2.census.gov/geo/tiger/TIGER2013>.
3. National Wetlands Inventory (NWI) data current as of May 2016 as downloaded from http://www.fws.gov/wetlands/Downloads/State/LA_wetlands.zip.
4. 2015 aerial imagery from USDA-APFO National Agricultural Inventory Project (NAIP) and may not reflect current ground conditions.



Scale 1:12,000
0 640 1,280 Feet

