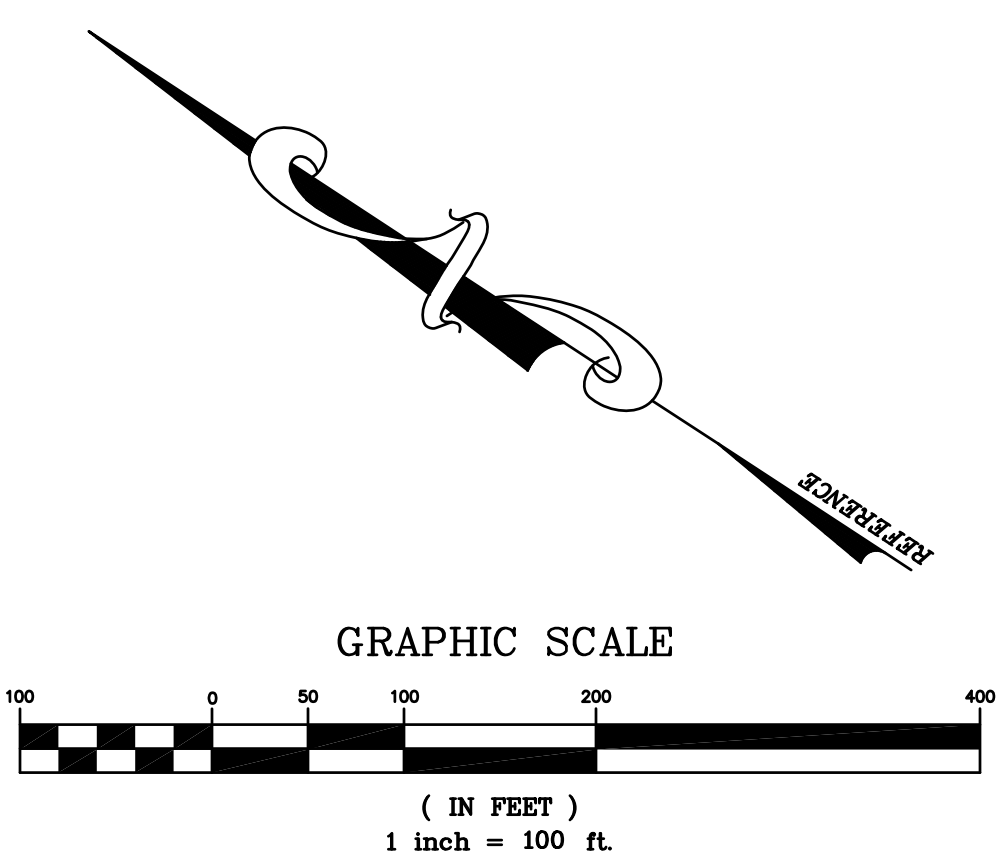
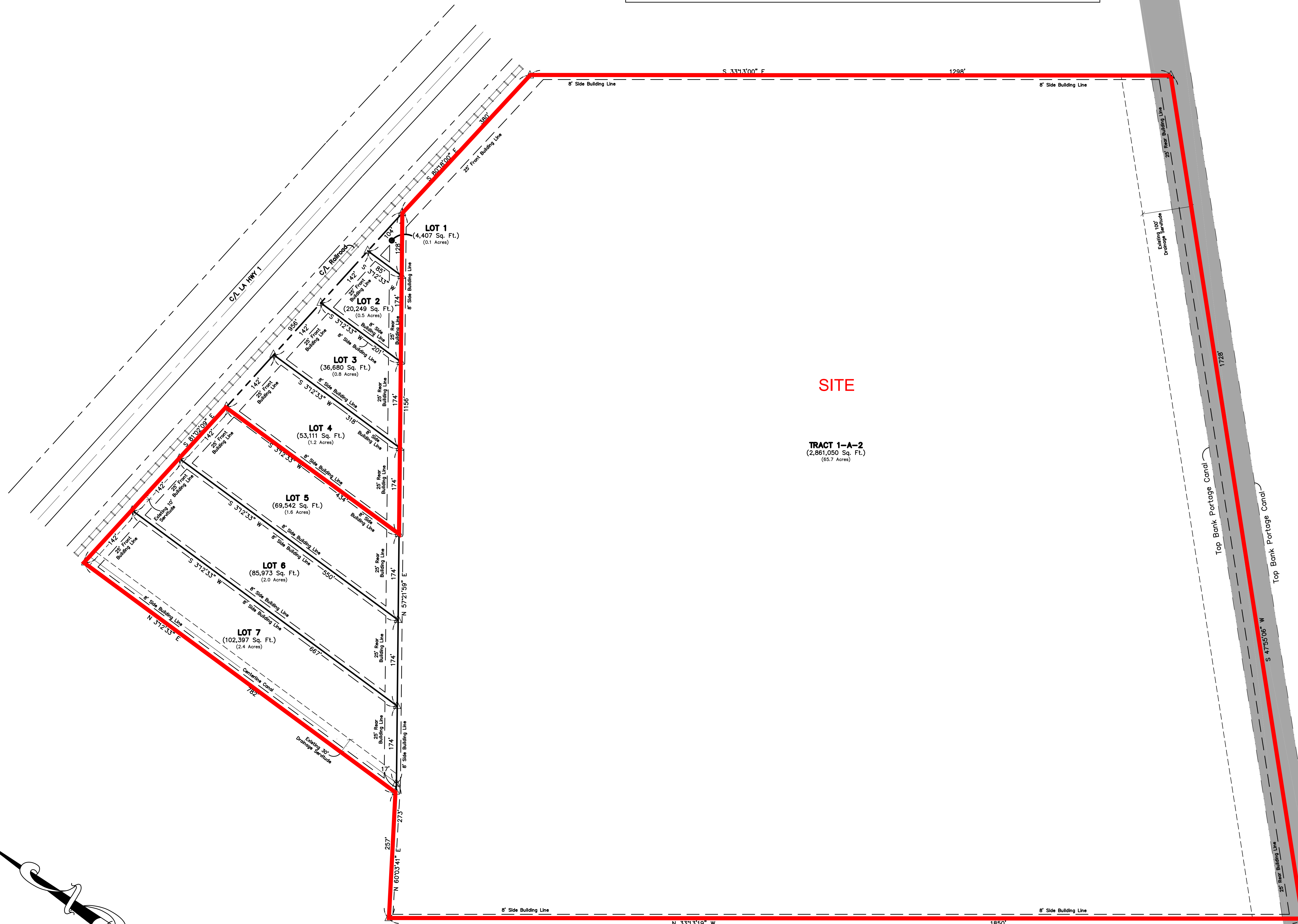


Exhibit F. New Roads Industrial Park Property Boundary Survey

REFERENCE MAP:
 "Map Showing Survey of Tract 1-A-2 being the removal of a certain tract or parcel of land from a larger tract known as Tract 1-A, of the heirs of Albin Major, Jr. located in Section 47, T-4-S, R-10-E, Southeastern Land District West of the Mississippi River, Pointe Coupee Parish, Louisiana for Van Major" by Joseph Garret, R.L.S. dated January 27, 1992.

LEGEND:


- Property Line
- - - Right-of-Way Line
- - - Servitude Line
- - - Building Line
- - - Centerline Road
- - - Top Bank Ditch
- - - Centerline Ditch
- △ Calculated Point
- Railroad
- ▬ Existing Ditch



**B.R.A.C (POINTE COUPEE PARISH)
 COMPILED PLAT SCHEMATIC**

SCHEMATIC/PRELIMINARY DOCUMENT/PLAT NOTE:
 This Proposed, Schematic or Preliminary Document is for REVIEW PURPOSES ONLY AND IS SUBJECT TO REVISION. This Proposed, Schematic or Preliminary Document MAY NOT AND SHOULD NOT BE USED FOR TRANSACTIONS, INCLUDING, BUT NOT LIMITED TO: CONSTRUCTION, BIDDING, RECORDATION, CONVEYANCE, SALES, AS THE BASIS FOR THE ISSUANCE OF A PERMIT, OR THE BASIS FOR PLACING A MONETARY VALUE ON THIS PROJECT/PROPERTY. Dimensions and Acreage shown do not reflect actual field work and are subject to change and were determined by use of reference information available to Patin Engineers and Surveyors, Inc. at the time of preparing this PROPOSED, SCHEMATIC OR PRELIMINARY DOCUMENT.

This Plat may not be used in any other way or form without the express written permission of Patin Engineers & Surveyors, Inc. Use for any other purpose shall be at user's sole risk without any liability to Patin Engineers & Surveyors, Inc. Any Use or Revisions made to this drawing without the written authorization of Patin Engineers & Surveyors, Inc. WILL VOID THIS PLAT.



PESI
PATIN ENGINEERS & SURVEYORS
 INCORPORATED

4463 LA. HWY. 1 SOUTH,
 SUITE F
 PORT ALLEN, LA 70767
 OFFICE: (225) 387-2167
 FAX: (225) 388-9006

W:\Luna Projects\RE\CAD 2012\12-137\B.R.A.C. (PC Parish) Compiled Plat.dwg (12-137) B.R.A.C. (PC Parish) Compiled Plat.dwg 9/12/2012 4:04:53 PM CDT