

Churchill Technology & Business Park

Exhibit 12

Cultural Encumbrances Map



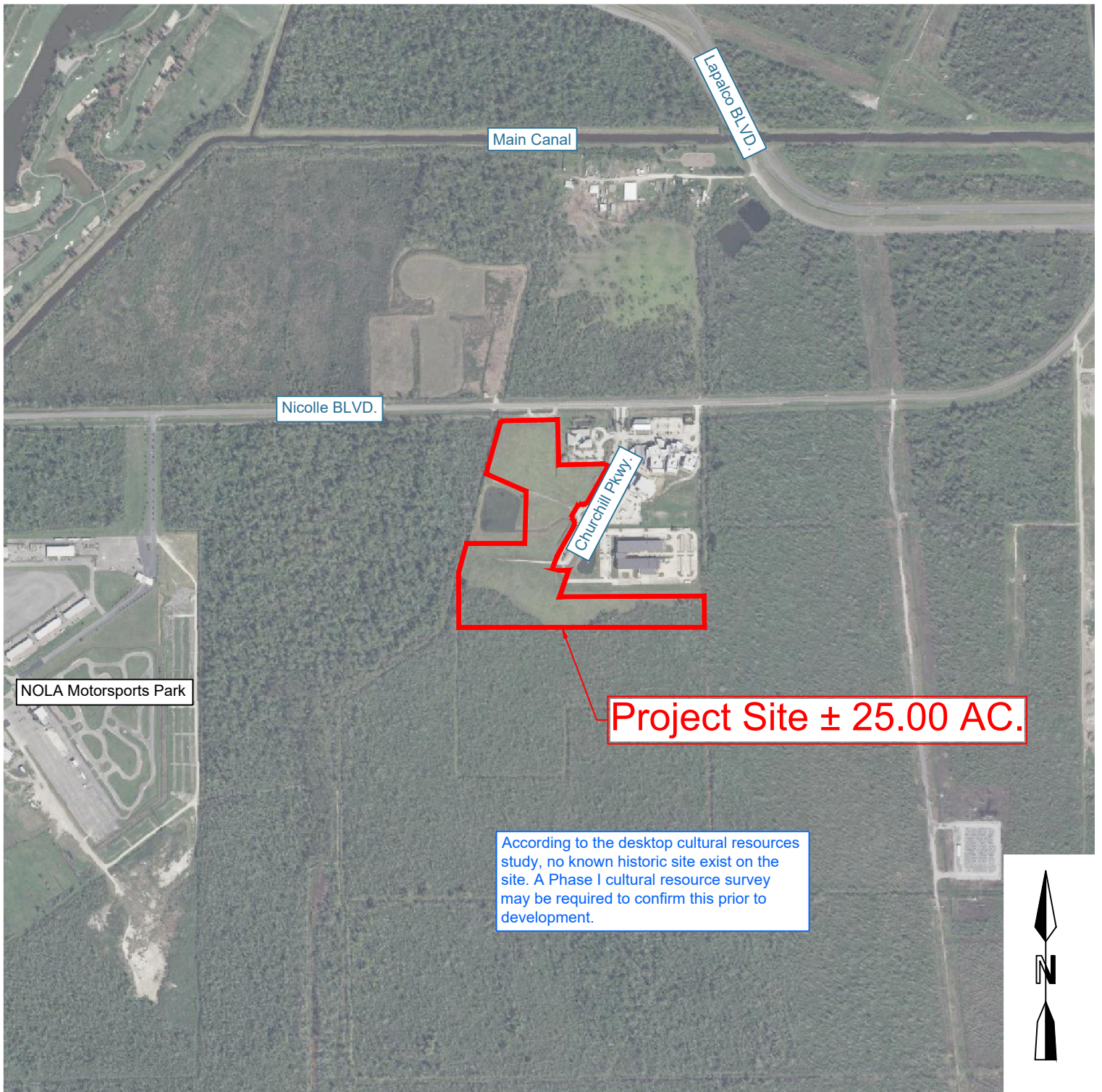
JEDCO

Jefferson Parish Economic Development Commission



GREATER NEW ORLEANS
INC
REGIONAL ECONOMIC DEVELOPMENT

Cultural Encumbrances Map



GREATER NEW ORLEANS
INC
REGIONAL ECONOMIC DEVELOPMENT



DDG
1 GALLERIA BLVD | SUITE 1506
METAIRIE, LA
504.434.6565

**Churchill Technology
and Business Park**

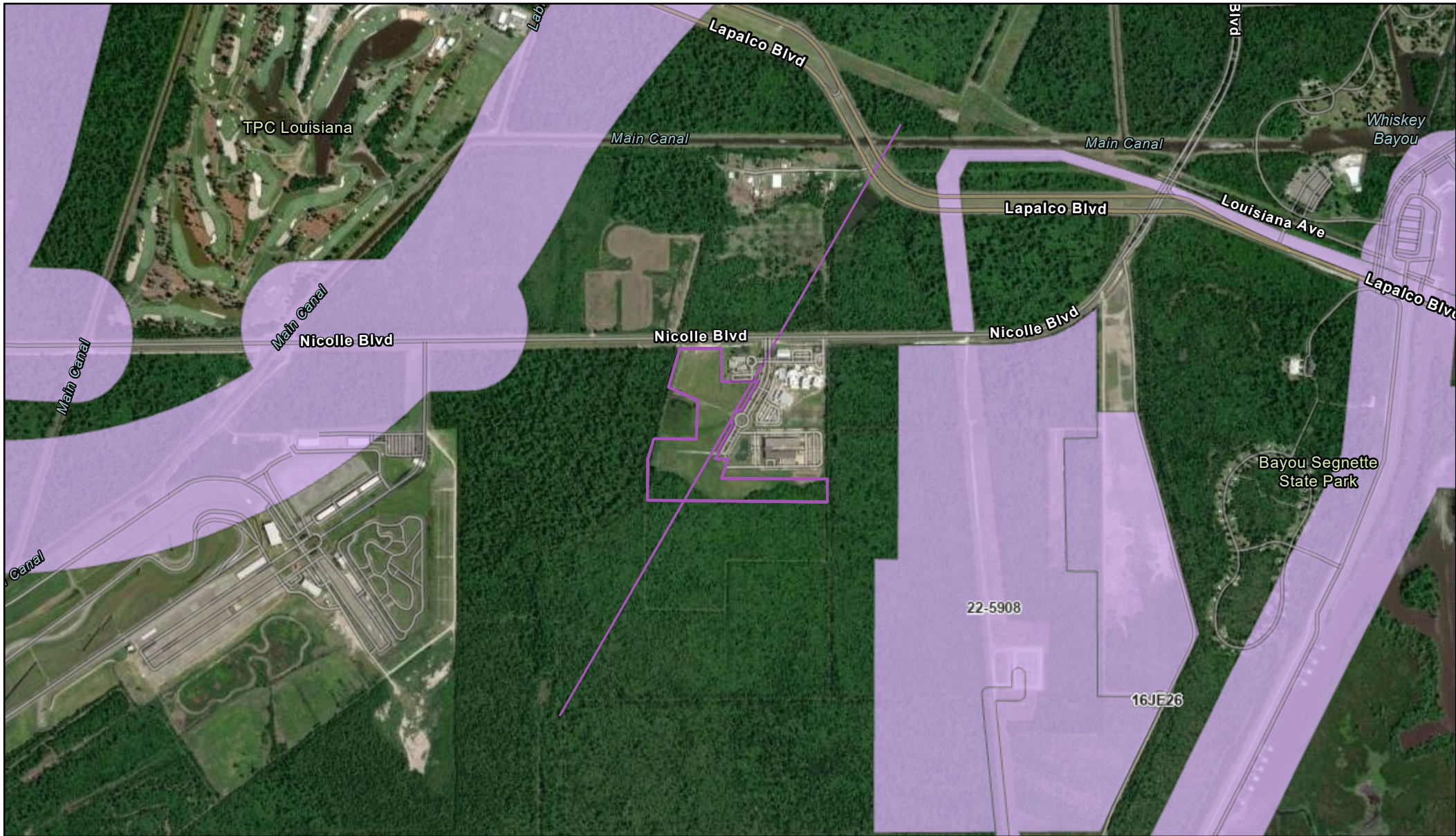
Avondale, LA 70094
Jefferson Parish






PROJECT NO. 23-1544
09-05-2024
CHECKED SMT
DRAWN BY JPO

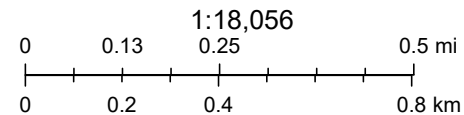


Historical and Archaeological Site Clearance Map



3/28/2024, 2:55:44 PM

-  23-1544 LED Boundary
-  Phase 1
-  Sites



LA Divisions of Archaeology and Historic Preservation, Esri Community Maps Contributors, CONANP, Esri, TomTom, Garmin, Foursquare, SafeGraph, GeoTechnologies, Inc, METI/NASA, USGS, EPA, NPS, US Census Bureau, USDA, USFWS, Maxar

ArcGIS Web AppBuilder