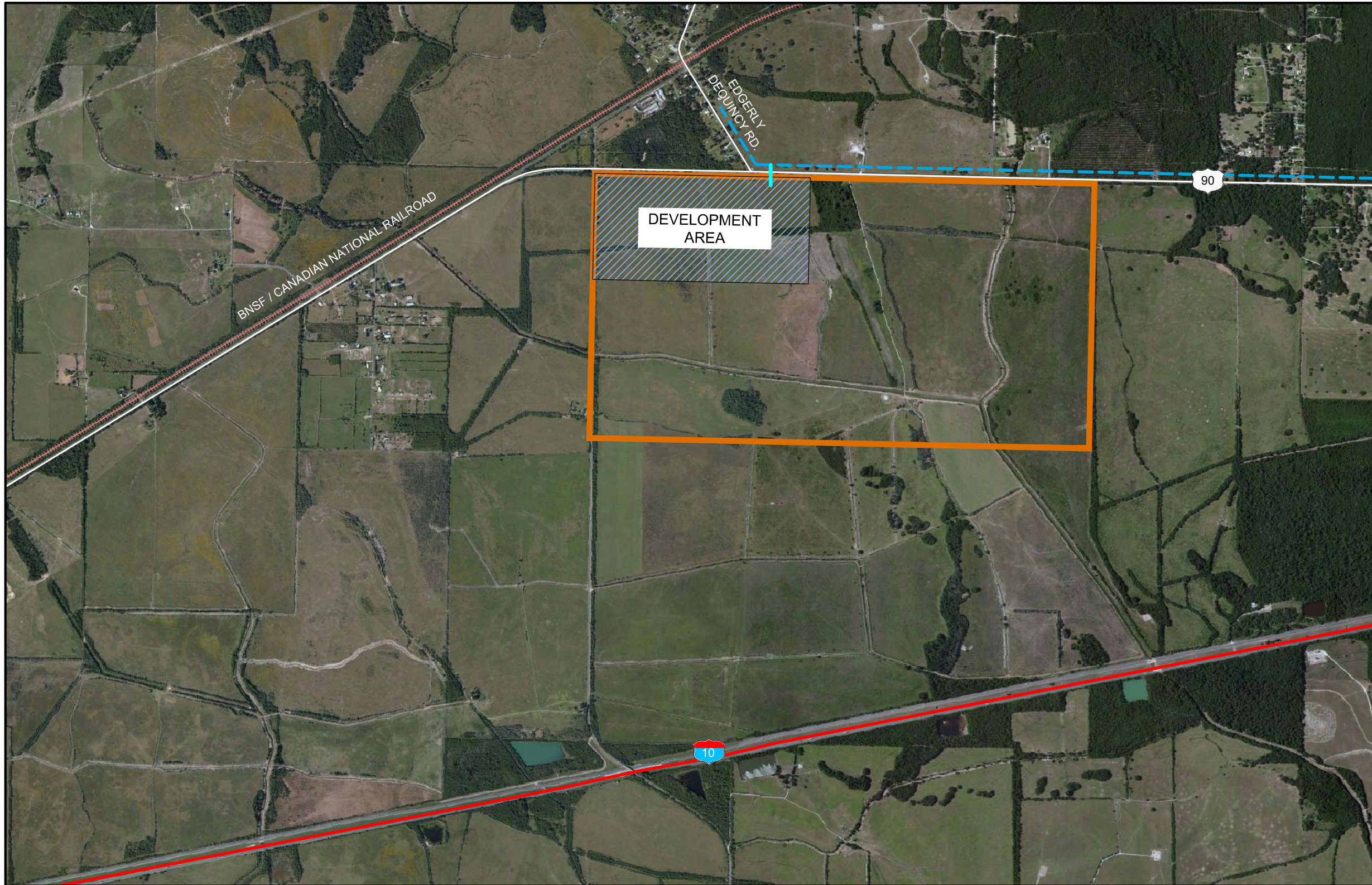
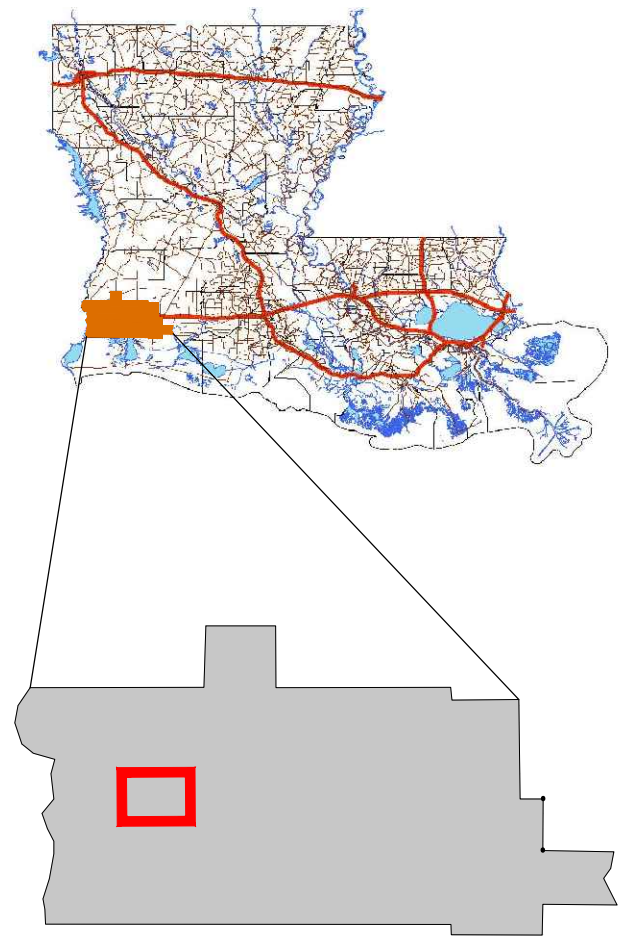








# Exhibit G - Potable Water Service Map



 Calcasieu Parish



## Available Site Data

-  H.C. Drew Property ( 1,000 Acres)
-  Development Area ( 183 Acres )
-  8" Houston River Water Line
-  Proposed 8" Water Main Extension; 386' ± Development Area

Source:  
 - Aerial Photo: 2014 Google Earth  
 - Site Boundaries are Approximate  
 - 12/10/2014



( IN FEET )  
 1 INCH = 2000ft.