

Exhibit N.

Crosspoint North Site Electrical Distribution Infrastructure Map

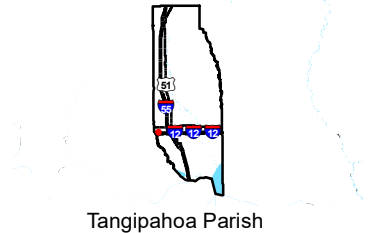


GREATER NEW ORLEANS
INC
REGIONAL ECONOMIC DEVELOPMENT

Crosspoint North Site Electrical Distribution Infrastructure Map

Crosspoint North Site
Tangipahoa Parish, LA

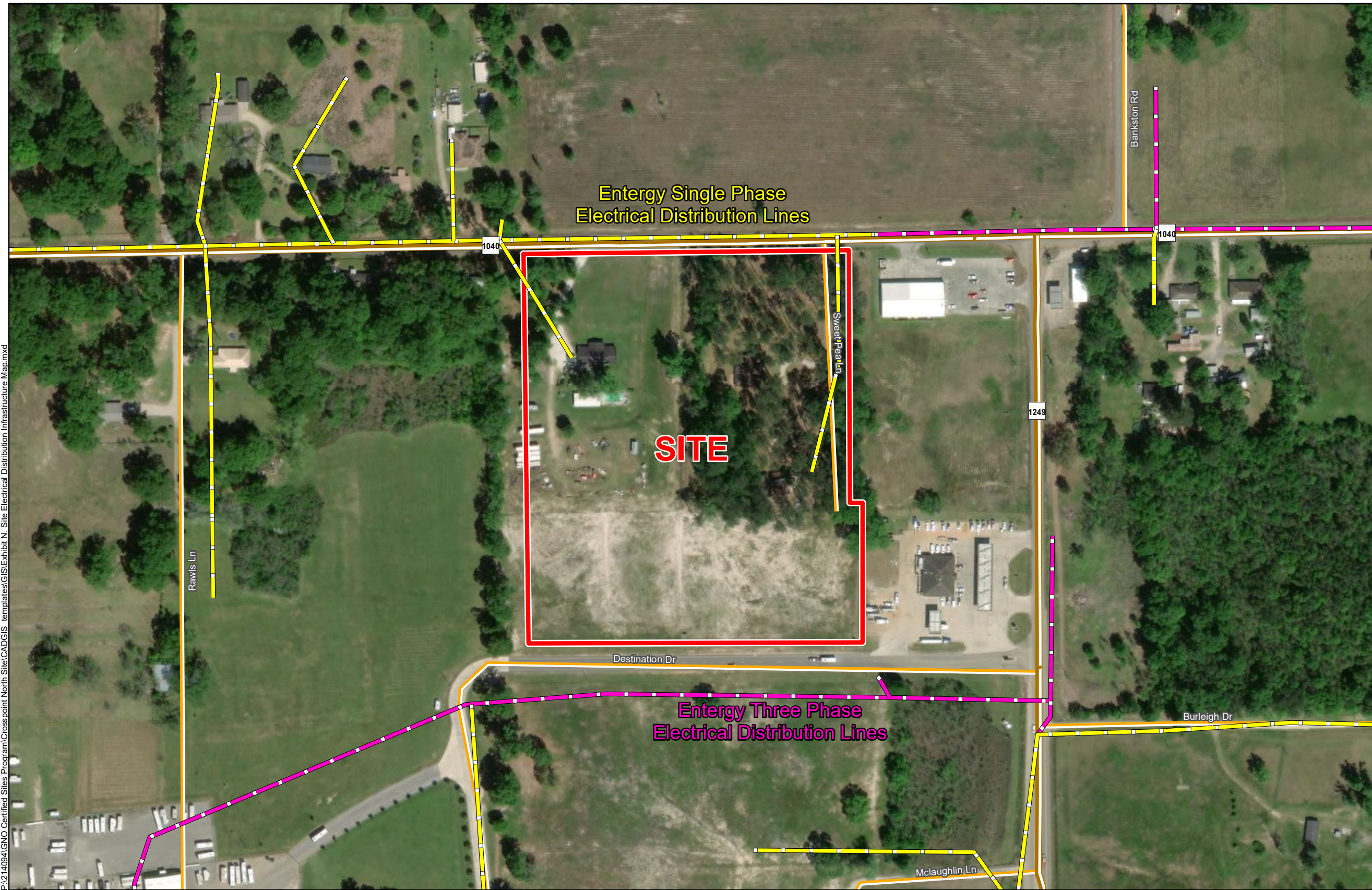
GNO



Tangipahoa Parish

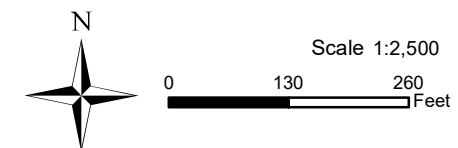
LEGEND

- Site Boundary (12.74 Ac. ±)
- Entergy Single Phase Electrical Distribution Lines
- Entergy Three Phase Electrical Distribution Lines
- Existing Roadway**
- Rural State Highway
- Local Roads



P:\214094\GNO Certified Sites Program\Crosspoint North Site\CAD\GIS templates\GIS\Exhibit N_Site Electrical Distribution Infrastructure Map.mxd

- General Notes:
1. No attempt has been made by CSRS, Inc. to verify site boundary, title, actual legal ownership, deed restrictions, servitudes, easements, or other burdens on the property, other than that furnished by the client or his representative.
 2. Transportation data from 2013 TIGER datasets via U.S. Census Bureau at <ftp://ftp2.census.gov/geo/tiger/TIGER2013>.
 3. 2015 aerial imagery from USDA-APFO National Agricultural Inventory Project (NAIP) and may not reflect current ground conditions.
 4. Utility information from visual inspection and/or the individual utility operators. Exact field location has not been determined by survey. The lines shown are an approximate representation only and may have been offset for depiction purposes.



Date:	10/29/2020
Project Number:	214094
Drawn By:	KPH
Checked By:	EEB

